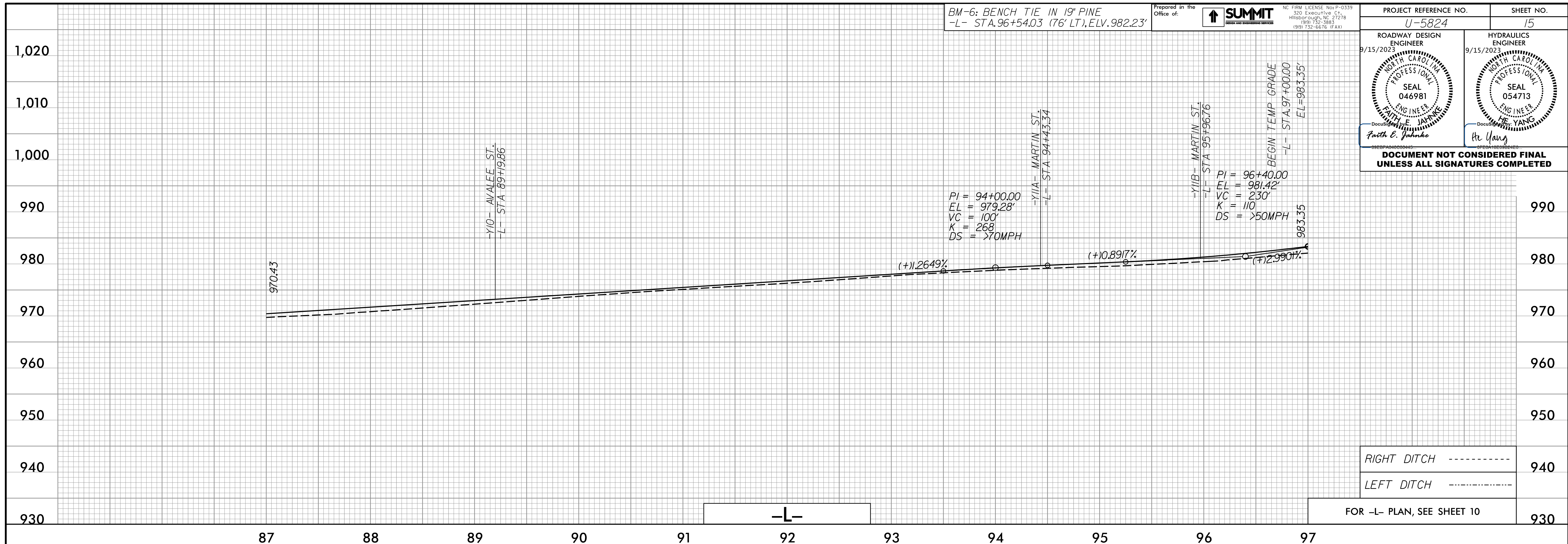


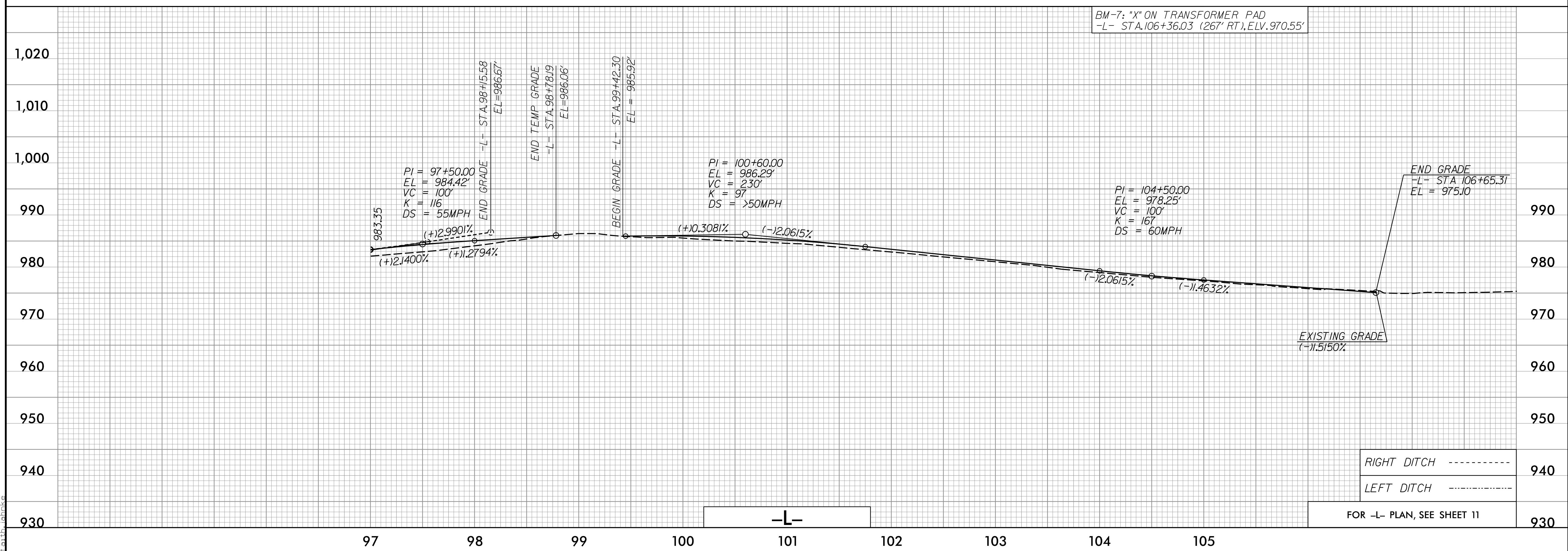
BM-6: BENCH TIE IN 1" PINE  
-L- STA.96+54.03 (76' LT), ELV.982.23'

Prepared in the Office of: **SUMMIT**  
NC FIRM LICENSE No. P-0339  
300 Executive Ct.  
Hillsborough, NC 27278  
(919) 732-5883  
(919) 732-6676 (FAX)

PROJECT REFERENCE NO. <b>U-5824</b>	SHEET NO. <b>15</b>
ROADWAY DESIGN ENGINEER 9/15/2023 <b>FAITH E. JAHNKE</b> SEAL 046981 NORTH CAROLINA PROFESSIONAL ENGINEER	HYDRAULICS ENGINEER 9/15/2023 <b>HE YANG</b> SEAL 054713 NORTH CAROLINA PROFESSIONAL ENGINEER
<b>DOCUMENT NOT CONSIDERED FINAL UNLESS ALL SIGNATURES COMPLETED</b>	



BM-7: "X" ON TRANSFORMER PAD  
-L- STA.106+36.03 (267' RT), ELV.970.55'



06-SEP-2023 15:18  
D:\631\_R023\F116.dgn  
Faith E. Jahnke