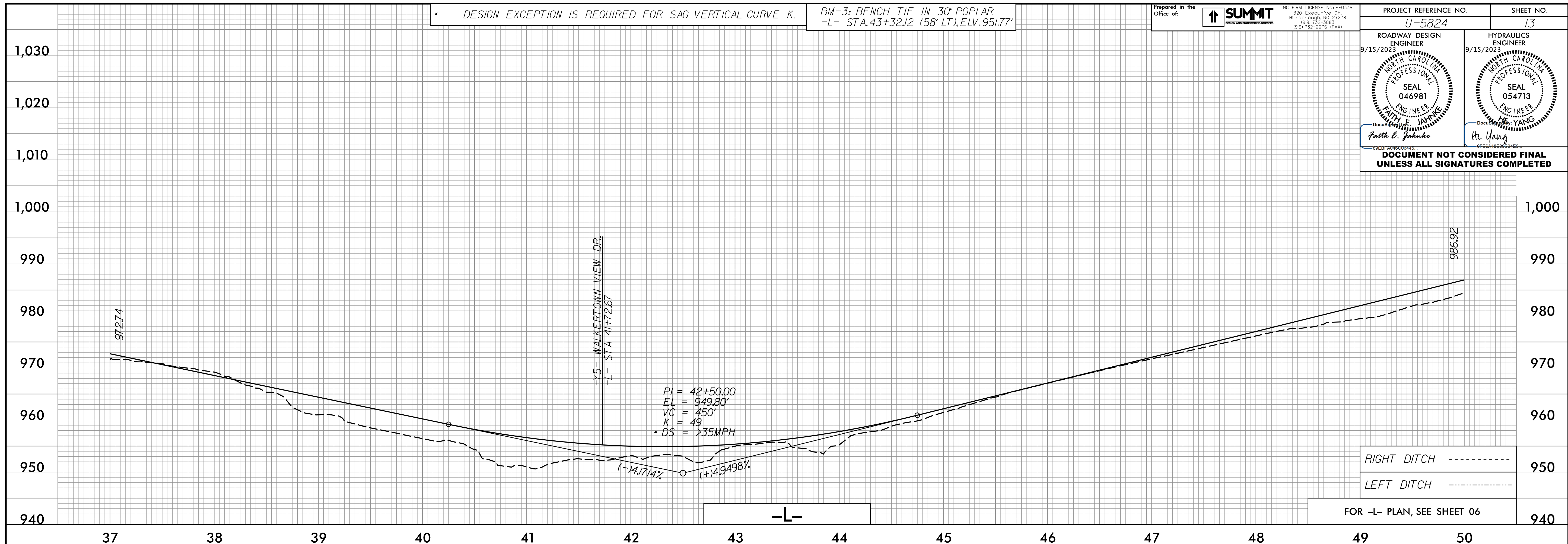


* DESIGN EXCEPTION IS REQUIRED FOR SAG VERTICAL CURVE K. BM-3: BENCH TIE IN 30' POPLAR -L- STA.43+32.12 (58' LT), ELV.951.77'

Prepared in the Office of: **SUMMIT** NC FIRM LICENSE No. P-0339 300 Executive Ct. Hillsborough, NC 27278 (919) 732-5883 (919) 732-6676 (FAX)

PROJECT REFERENCE NO. U-5824	SHEET NO. 13
ROADWAY DESIGN ENGINEER 9/15/2023 FAITH E. JAHNKE SEAL 046981 NORTH CAROLINA PROFESSIONAL ENGINEER	HYDRAULICS ENGINEER 9/15/2023 HE YANG SEAL 054713 NORTH CAROLINA PROFESSIONAL ENGINEER
DOCUMENT NOT CONSIDERED FINAL UNLESS ALL SIGNATURES COMPLETED	

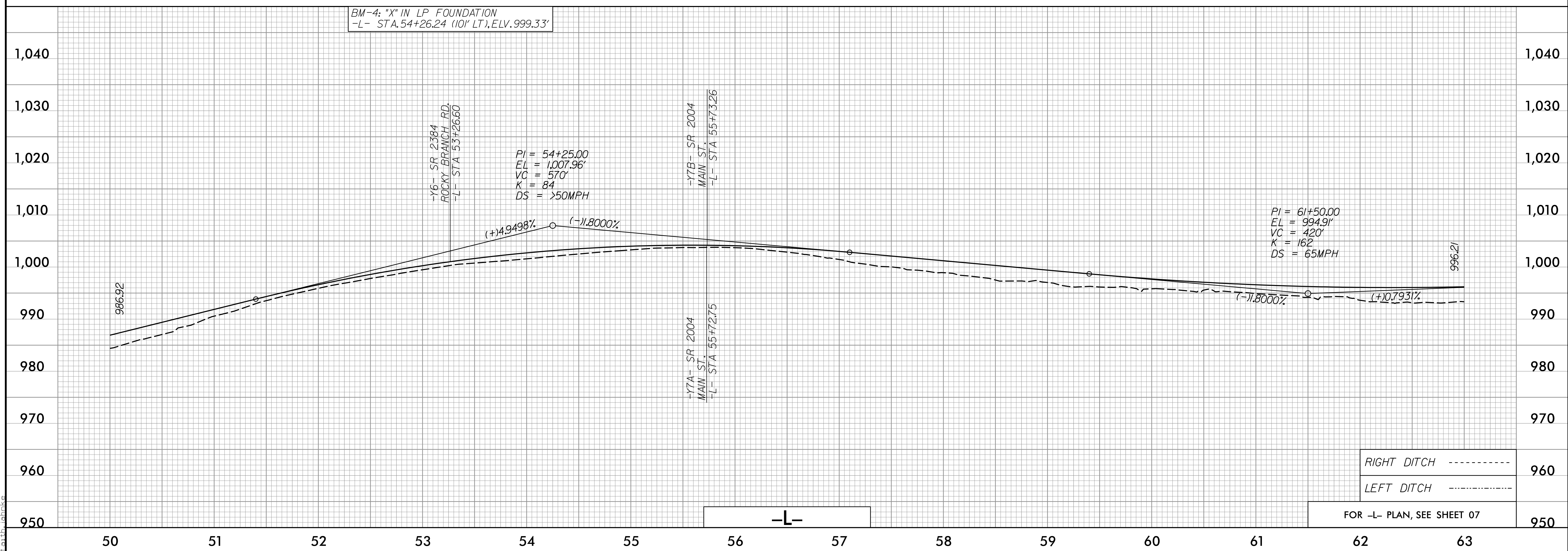


RIGHT DITCH -----

LEFT DITCH -----

FOR -L- PLAN, SEE SHEET 06

BM-4: "X" IN LP FOUNDATION -L- STA.54+26.24 (101' LT), ELV.999.33'



RIGHT DITCH -----

LEFT DITCH -----

FOR -L- PLAN, SEE SHEET 07

06-SEP-2023 10:18 AM
C:\Users\faith.jahnke\Documents\13.dgn