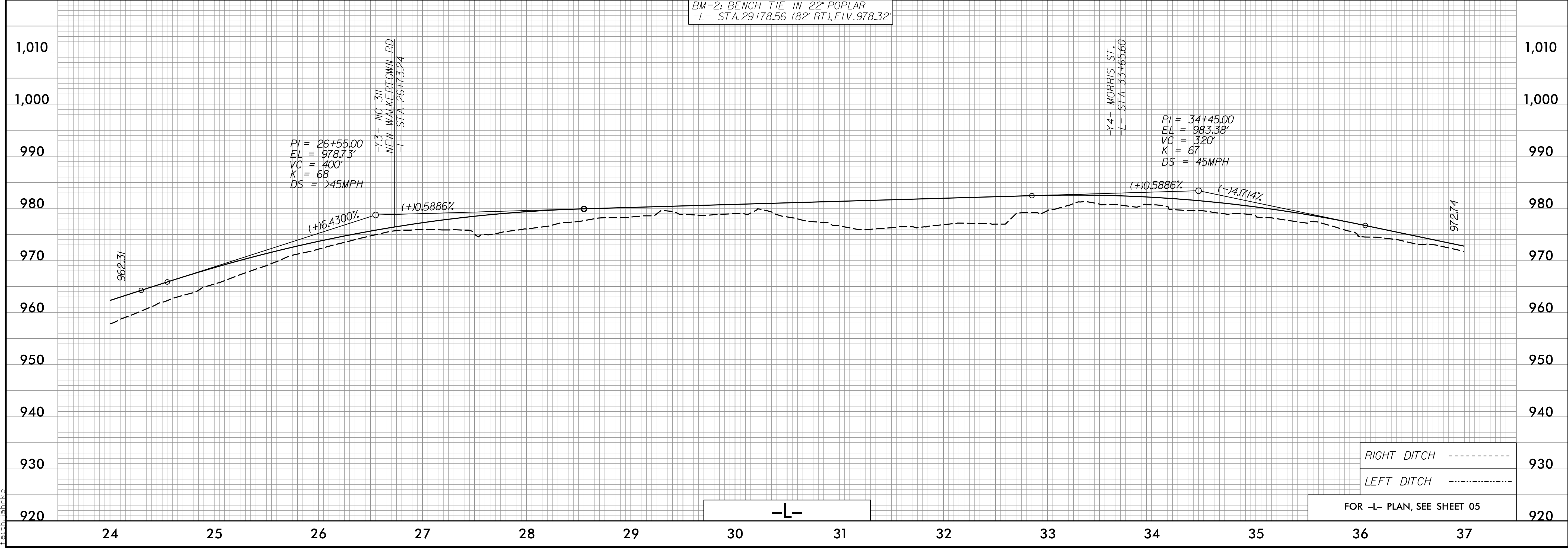
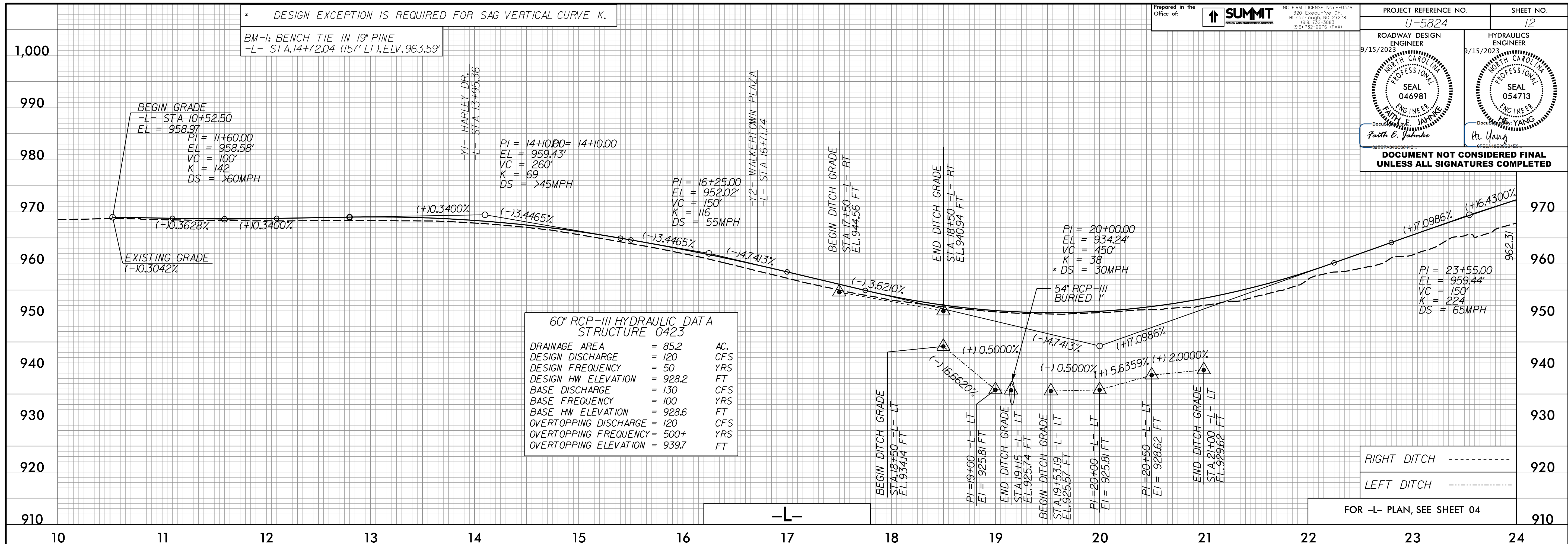


\* DESIGN EXCEPTION IS REQUIRED FOR SAG VERTICAL CURVE K.

Prepared in the Office of: **SUMMIT** NC FIRM LICENSE No. P-0339 300 Executive Ct. Hillsborough, NC 27278 (919) 732-5883 (919) 732-6676 (FAX)

PROJECT REFERENCE NO. <b>U-5824</b>	SHEET NO. <b>12</b>
ROADWAY DESIGN ENGINEER 9/15/2023 FAITH E. JAHNKE SEAL 046981 NORTH CAROLINA PROFESSIONAL ENGINEER	HYDRAULICS ENGINEER 9/15/2023 HE YANG SEAL 054713 NORTH CAROLINA PROFESSIONAL ENGINEER

DOCUMENT NOT CONSIDERED FINAL UNLESS ALL SIGNATURES COMPLETED



06-SEP-2023 15:18  
166%  
Faith E. Jahnke