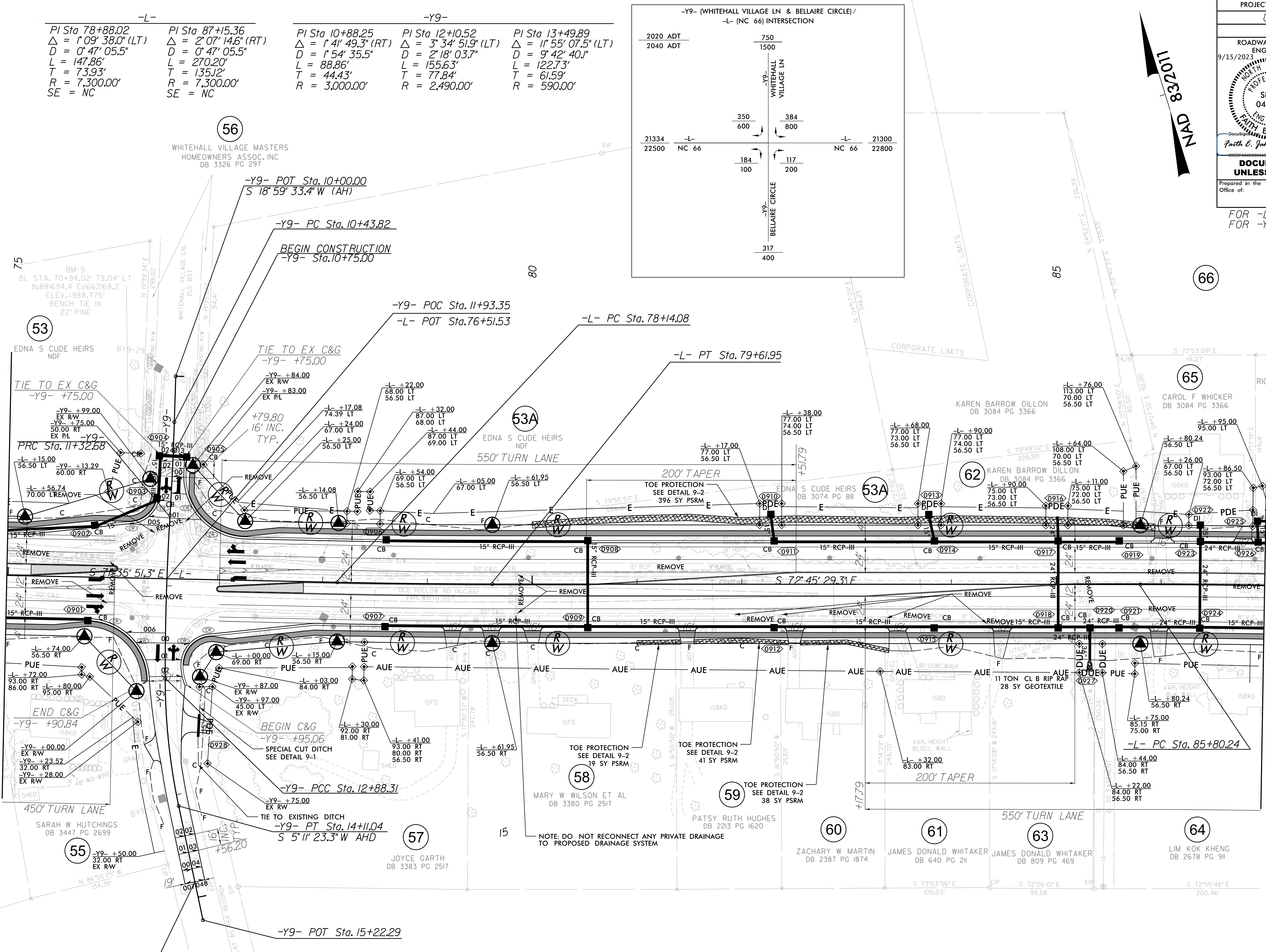


PROJECT REFERENCE NO. U-5824		SHEET NO. 9	
RW SHEET NO.			
ROADWAY DESIGN ENGINEER 9/15/2023 PAITH E. JANKINS SEAL 046981		HYDRAULICS ENGINEER 9/15/2023 HE YANG SEAL 054713	
DOCUMENT NOT CONSIDERED FINAL UNLESS ALL SIGNATURES COMPLETED			
Prepared in the Office at: SUMMIT		NC FIRM LICENSE NO: P-0339 300 Executive Ct. Hillsborough, NC 27278 (919) 732-3883 (919) 732-6676 (FAX)	

FOR -L- PROFILE, SEE SHEET 14
FOR -Y9- PROFILE, SEE SHEET 18

MATCHLINE -L- STA 75 + 00.00
(SEE SHEET 8)

MATCHLINE -L- STA 87 + 00.00
(SEE SHEET 10)

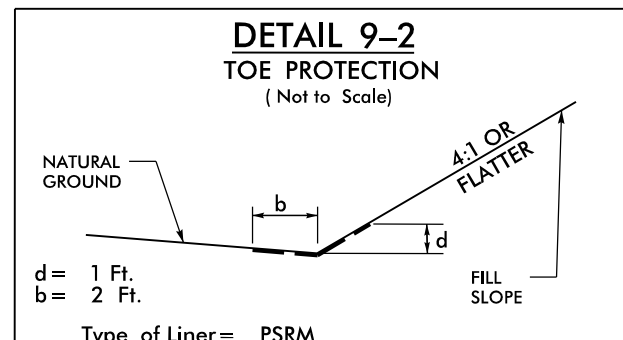
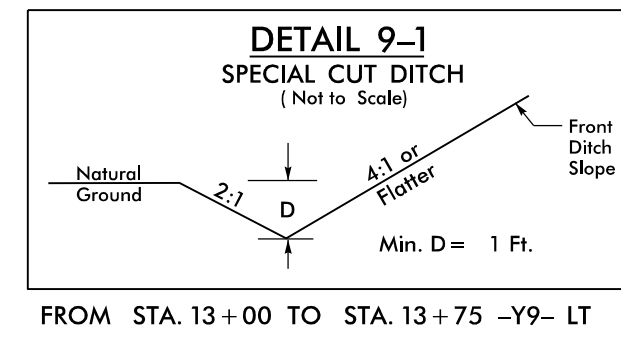
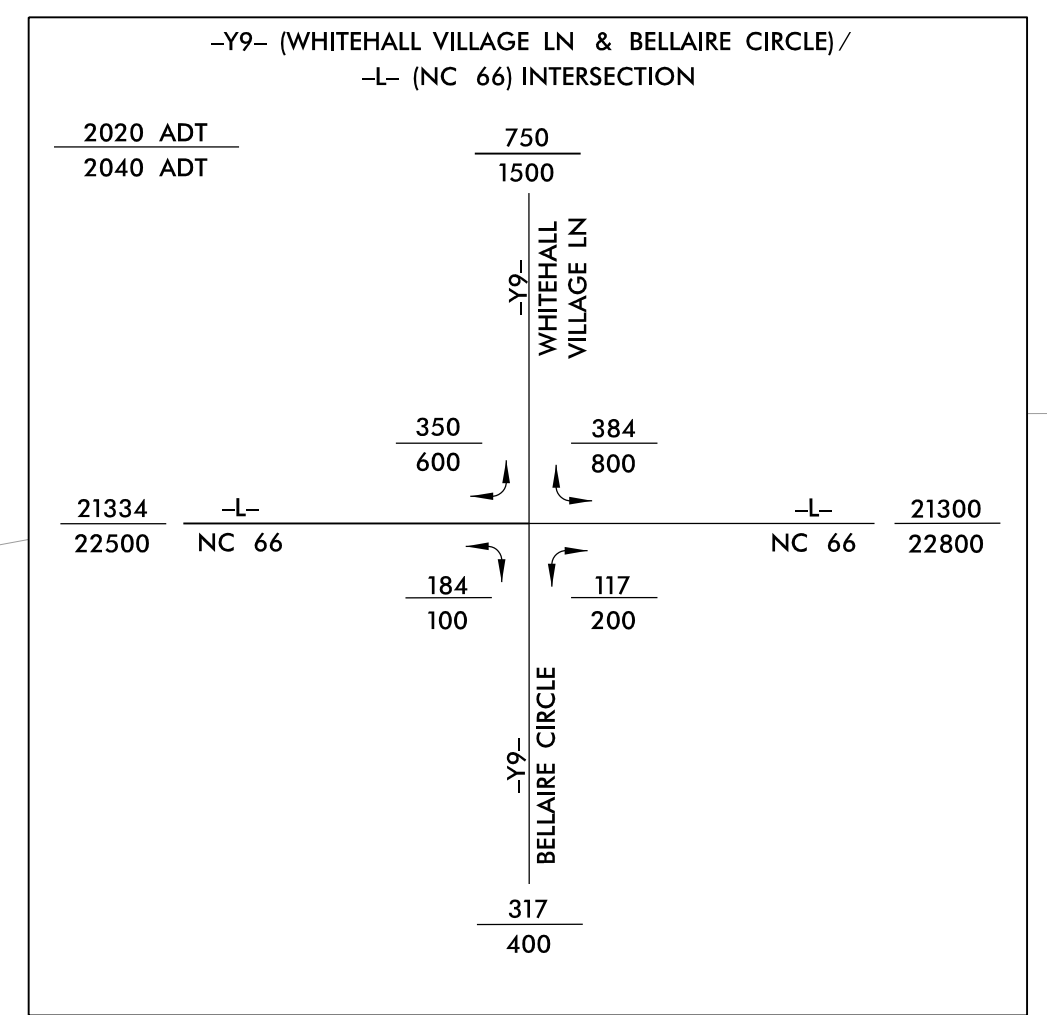


-L-

PI Sta 78+88.02	PI Sta 87+15.36
$\Delta = 1' 09'' 38.0'' (LT)$	$\Delta = 2' 07'' 14.6'' (RT)$
$D = 0' 47'' 05.5''$	$D = 0' 47'' 05.5''$
$L = 147.86'$	$L = 270.20'$
$T = 73.93'$	$T = 135.12'$
$R = 7,300.00'$	$R = 7,300.00'$
SE = NC	SE = NC

-Y9-

PI Sta 10+88.25	PI Sta 12+10.52	PI Sta 13+49.89
$\Delta = 1' 41'' 49.3'' (RT)$	$\Delta = 3' 34'' 51.9'' (LT)$	$\Delta = 1' 55'' 07.5'' (LT)$
$D = 1' 54'' 35.5''$	$D = 2' 18'' 03.7''$	$D = 9' 42'' 40.1''$
$L = 88.86'$	$L = 155.63'$	$L = 122.73'$
$T = 44.43'$	$T = 77.84'$	$T = 61.59'$
$R = 3,000.00'$	$R = 2,490.00'$	$R = 590.00'$



REVISIONS

06-SEP-2023 15:48
06:52:11 R:\CASH-1.dgn
faub,labrke