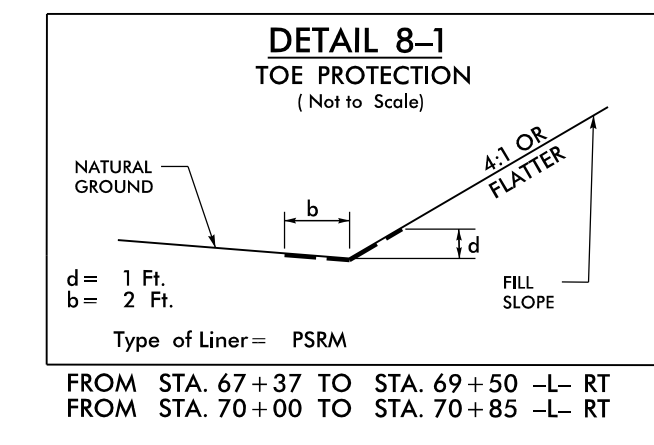


8/17/2023

**-Y8A-**  
 PI Sta 11+10.45  
 $\Delta = 1' 26'' 19.4'' (LT)$   
 $D = 2' 17'' 30.6''$   
 $L = 62.78'$   
 $T = 31.39'$   
 $R = 2,500.00'$

**-L-**  
 PI Sta 72+62.68  
 $\Delta = 2' 23'' 13.1'' (LT)$   
 $D = 0' 47'' 05.5''$   
 $L = 304.12'$   
 $T = 152.08'$   
 $R = 7,300.00'$   
 $SE = NC$

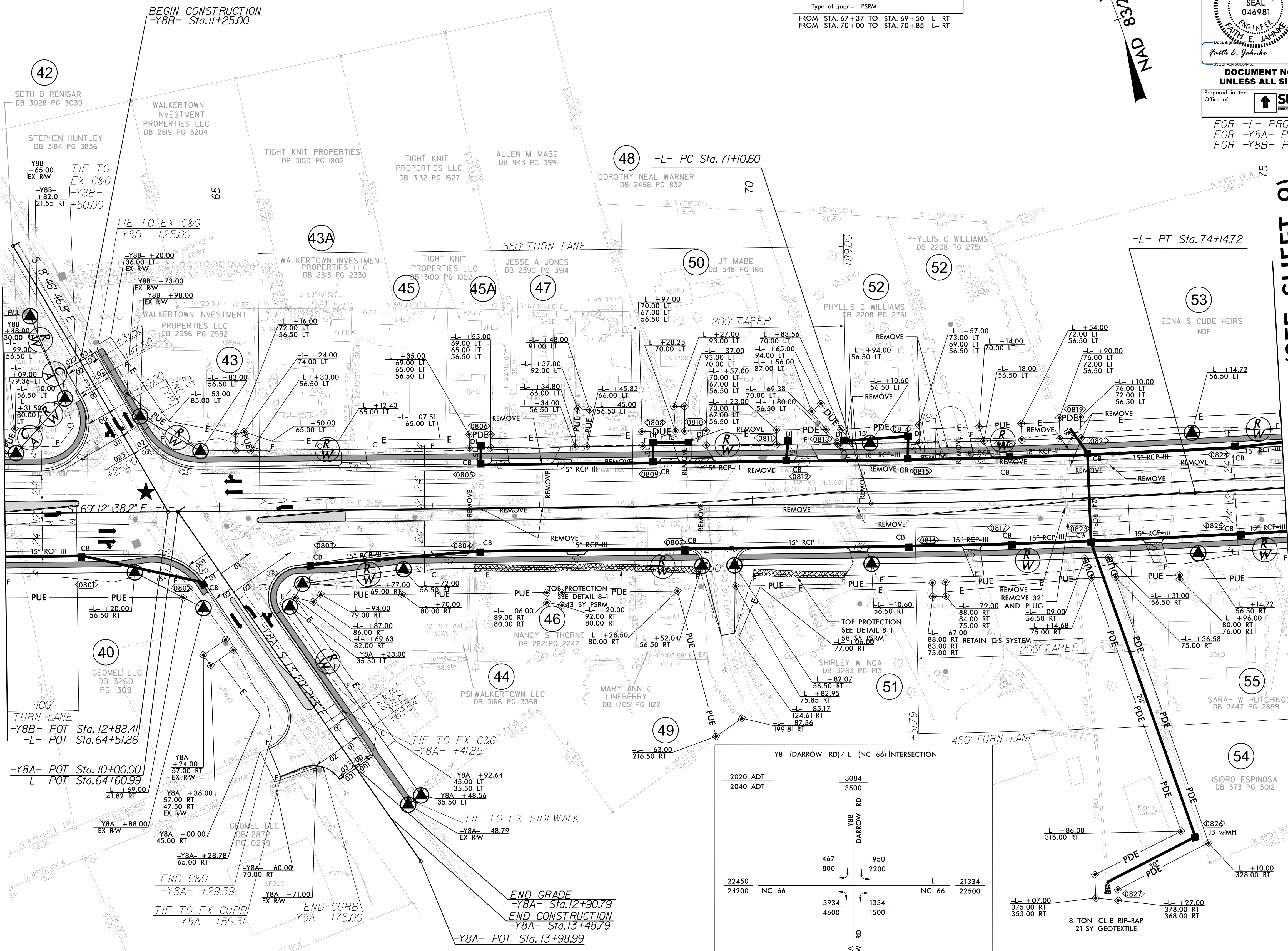


PROJECT REFERENCE NO. <b>U-5824</b>	SHEET NO. <b>8</b>
RW SHEET NO.	
ROADWAY DESIGN ENGINEER 9/15/2023 <b>FAITH E. JANKINS</b> PROFESSIONAL SEAL 046981	HYDRAULICS ENGINEER 9/15/2023 <b>HE YUANG</b> PROFESSIONAL SEAL 054713
<b>DOCUMENT NOT CONSIDERED FINAL UNLESS ALL SIGNATURES COMPLETED</b>	
Prepared in the Office at: <b>SUMMIT</b>	NC FIRM LICENSE NO: P-0339 300 Executive Ct. Hillsborough, NC 27278 (919) 732-3883 (919) 732-6676 (FAX)

FOR -L- PROFILE, SEE SHEET 14  
 FOR -Y8A- PROFILE, SEE SHEET 18  
 FOR -Y8B- PROFILE, SEE SHEET 18

MATCHLINE -L- STA 63 + 00.00 (SEE SHEET 7)

MATCHLINE -L- STA 75 + 00.00 (SEE SHEET 9)



**-Y8- (DARROW RD)/-L- (NC 66) INTERSECTION**

2020 ADT	3084
2040 ADT	3500
-Y8B- DARROW RD	
467	1950
800	2200
-L- NC 66	
22450	21334
24200	22500
-Y8A- DARROW RD	
3934	1334
4600	1500
-Y8A- DARROW RD	
5934	6600

REVISIONS

06-SEP-2023 15:48  
 06:32:11 R:\04\ash\cadd\g  
 10/16/2023