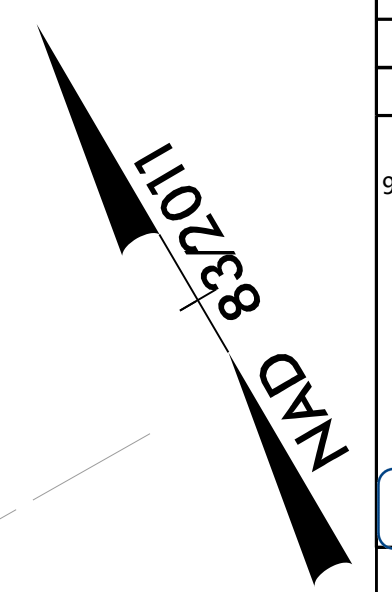
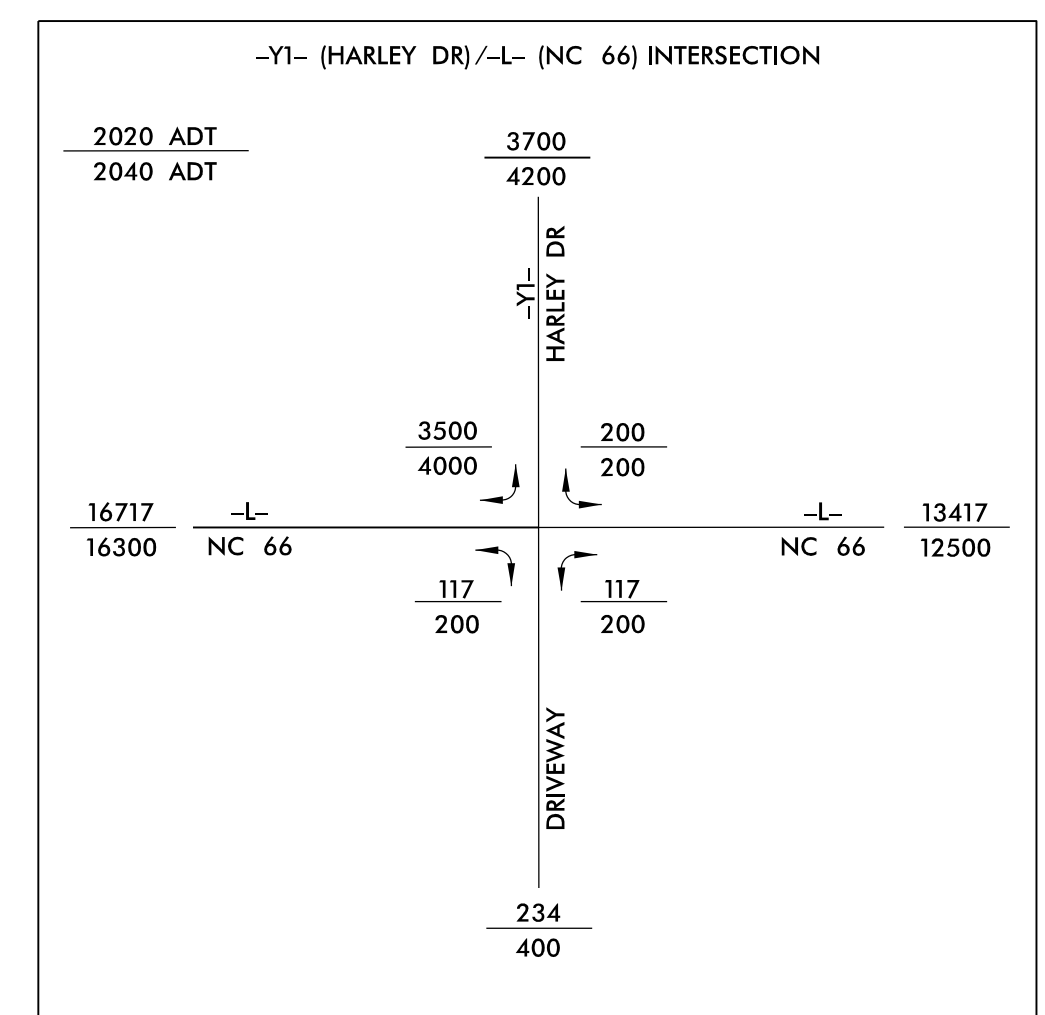


PROJECT REFERENCE NO. U-5824	SHEET NO. 4
RW SHEET NO.	
ROADWAY DESIGN ENGINEER 9/15/2023 FAITH E. JAHNKE NORTH CAROLINA PROFESSIONAL SEAL 046981	HYDRAULICS ENGINEER 9/15/2023 HE YANG NORTH CAROLINA PROFESSIONAL SEAL 054713
DOCUMENT NOT CONSIDERED FINAL UNLESS ALL SIGNATURES COMPLETED	
Prepared in the Office at: SUMMIT	
FOR -L- PROFILE, SEE SHEET 12 FOR -Y1- PROFILE, SEE SHEET 16 FOR -Y2- PROFILE, SEE SHEET 16	

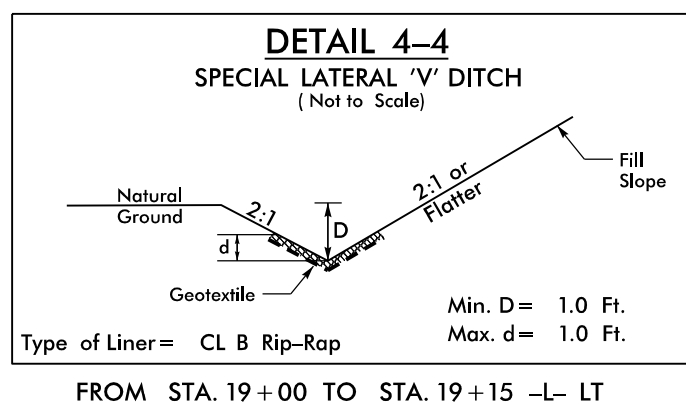
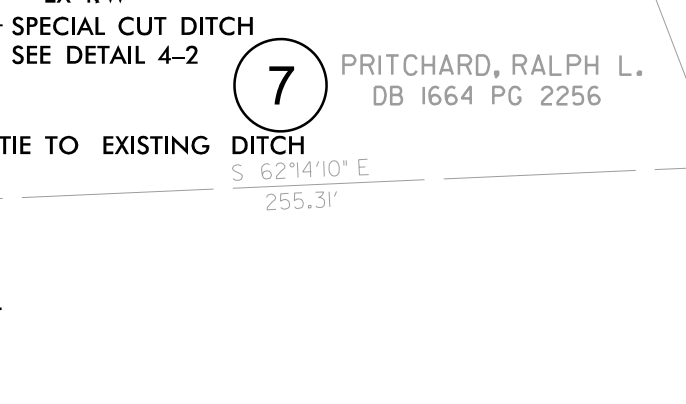
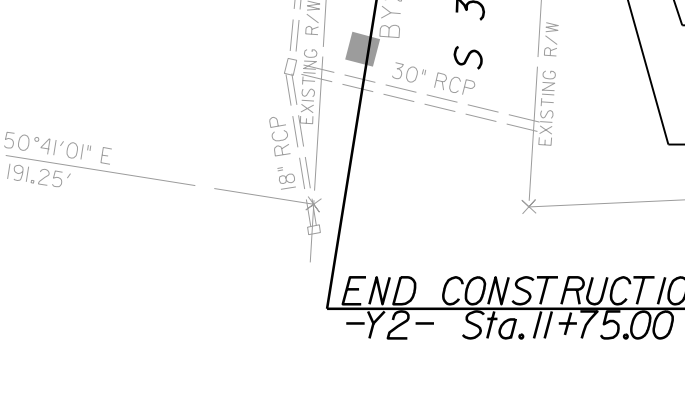
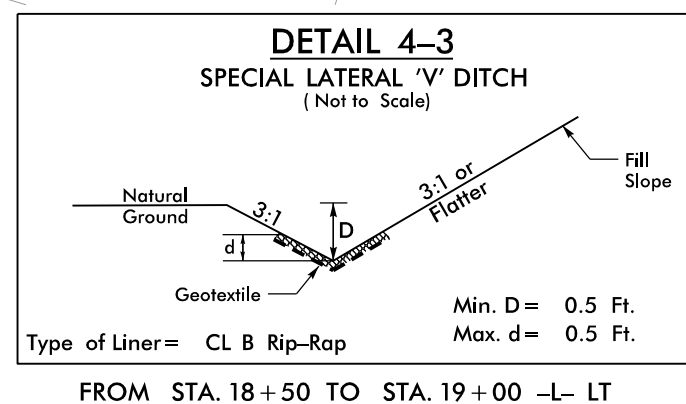
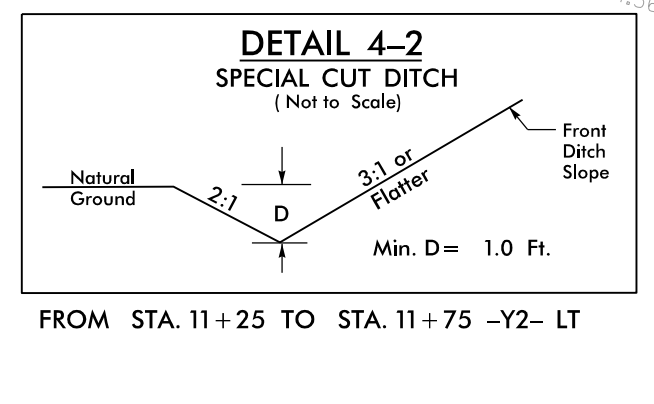
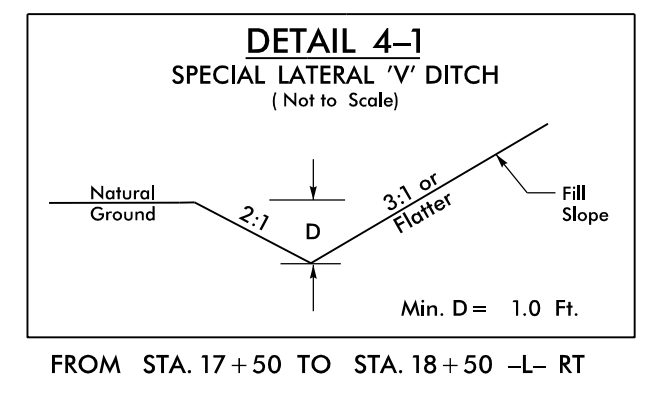
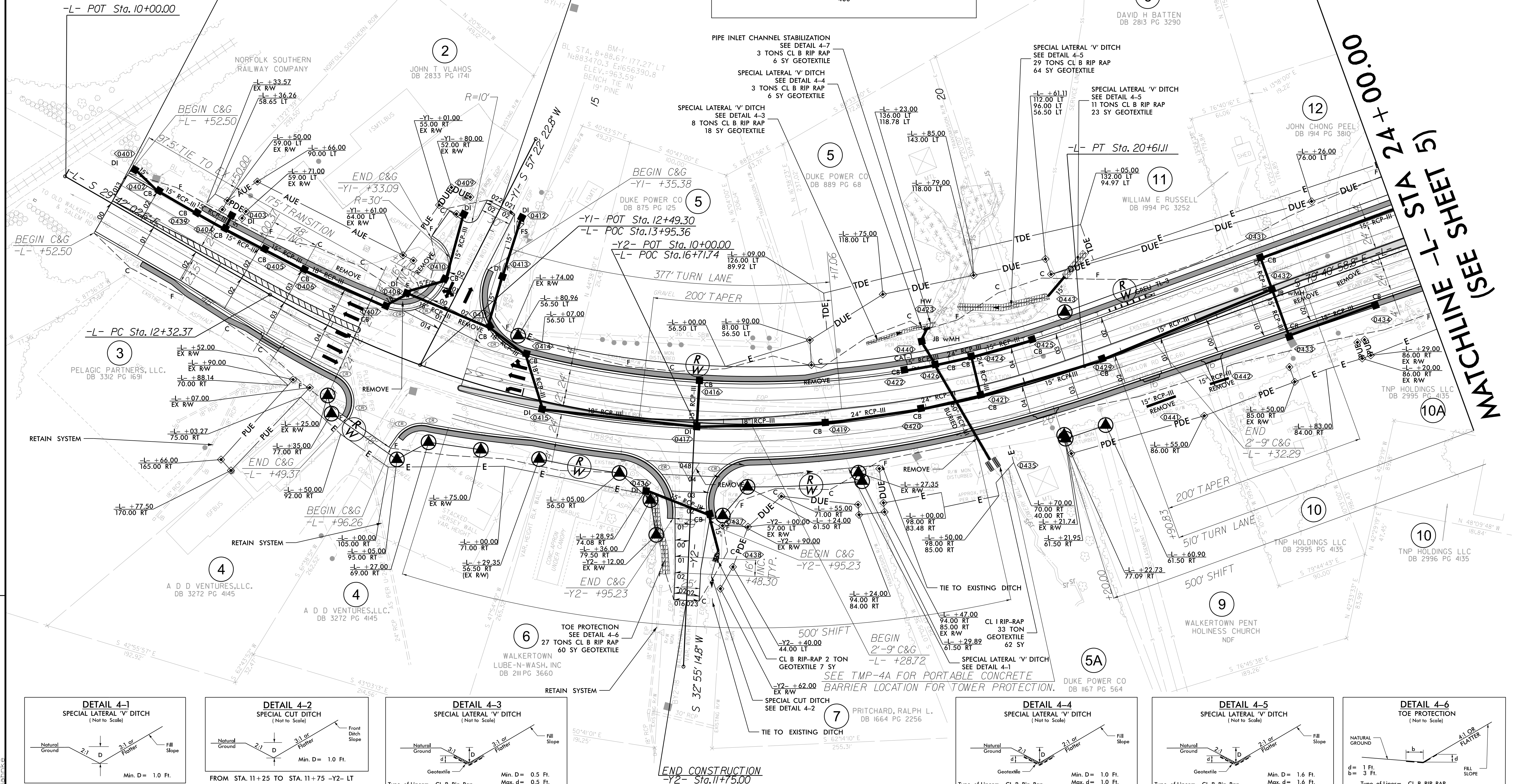
L
 PI Sta 16+75.18
 $\Delta = 49^{\circ} 58' 56.1''$ (LT)
 D = 6' 01" 52.1"
 L = 828.74'
 T = 442.81'
 R = 950.00'
 SE = 4%
 RO = 192'



CONTRACTOR WILL NOT BE PERMITTED TO STORE ANY EQUIPMENT ON NS PROPERTY WITHOUT PERMISSION FROM THE NS RAILROAD ENGINEER IN ACCORDANCE WITH SECTION E.6.K.1 OF THE NS PUBLIC PROJECTS MANUAL.

BEGIN TIP PROJECT U-5824
 -L- Sta. 10+52.50

BEGIN CONSTRUCTION
 -Y1- Sta. 10+75.00



MATCHLINE -L- STA 24+00.00.00 (SEE SHEET 5)

REVISIONS

15-SEP-2023 13:28
 U-5824_RoadPlan-4.dgn
 faith.jahnke