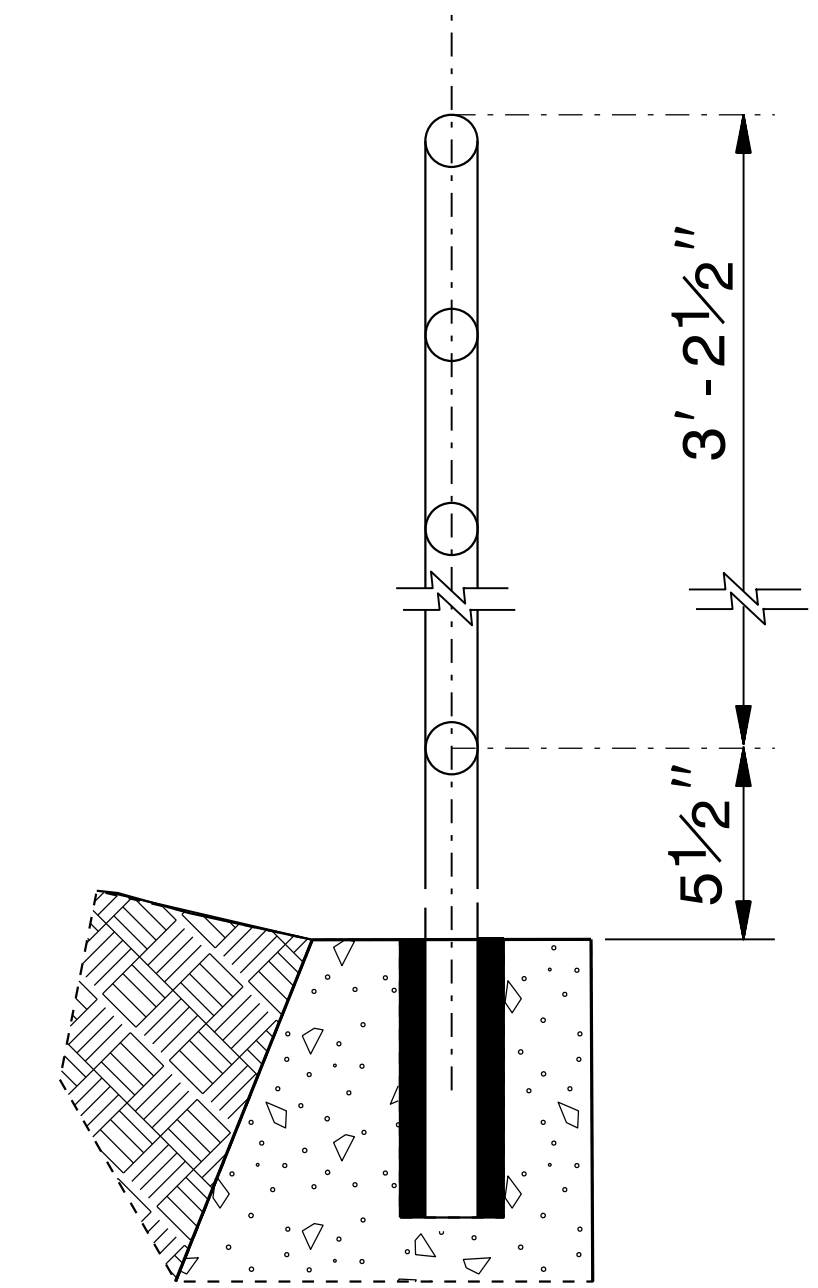


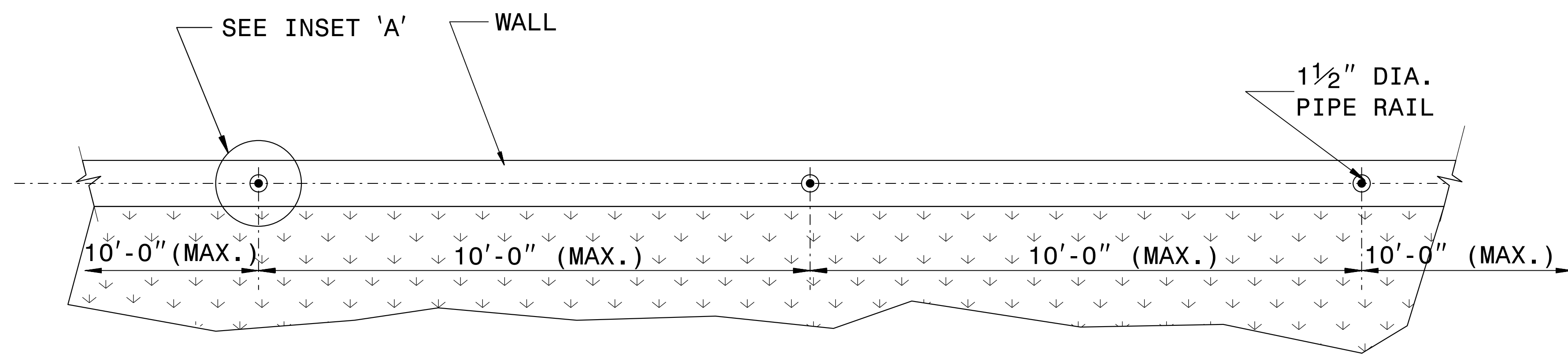
**ELEVATION OF HANDRAIL**



**INSET 'A'**

**NOTES:**

- CONSTRUCT PROPOSED STEEL PIPE RAIL 1 1/2" DIAMETER SCHEDULE 40 PLAIN END GALVANIZED STEEL PIPE MEETING THE REQUIREMENTS OF ASTM A53.
- EMBED PIPE RAIL INTO PROPOSED WALL WITH CHEMICAL OR CONCRETE GROUT ANCHORING SYSTEM PER THE WALL MANUFACTURER'S RECOMMENDATIONS.
- REPAIR GALVANIZING IN ACCORDANCE WITH SECTION 1076 OF THE NCDOT STANDARD SPECIFICATIONS.
- PAINT, IF REQUIRED BY THE ENGINEER, IN ACCORDANCE WITH SECTION 1080 OF THE STANDARD SPECIFICATIONS.
- CENTER THE PROPOSED RAILING ON TOP OF THE WALL WITH POST SPACING SYMMETRICAL ABOUT THE CENTER-LINE OF THE WALL.
- WELD IN ACCORDANCE WITH ARTICLE 1072-18 OF THE STANDARD SPECIFICATIONS.
- SUBMIT THE ATTACHMENT OF THE HANDRAIL TO THE RETAINING WALL TO THE CONTRACTS AND STANDARDS OFFICE FOR APPROVAL.

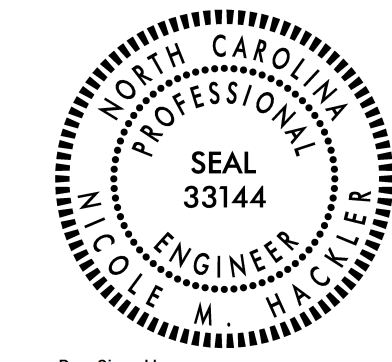


**PLAN VIEW**

24-MAY-2018 14:10 S:\Contracts\Special Details\Jhowerton\Handrail on Retaining Wall.dgn Jhowerton AT USD-292595

DOCUMENT NOT CONSIDERED FINAL UNLESS ALL SIGNATURES COMPLETED

9/14/2023



DocuSigned by: Nicole M. Heckler 9884323034164CS

<b>CONTRACT STANDARDS AND DEVELOPMENT UNIT</b> Office 919-707-6950 FAX 919-250-4119	
<b>DETAIL OF PIPE HANDRAIL MOUNTED ON A WALL</b>	
ORIGINAL BY: E.E. WARD	DATE: 12-99
MODIFIED BY:	DATE:
CHECKED BY:	DATE:
FILE SPEC.: jhowerton/handrail on retaining wall.dgn	