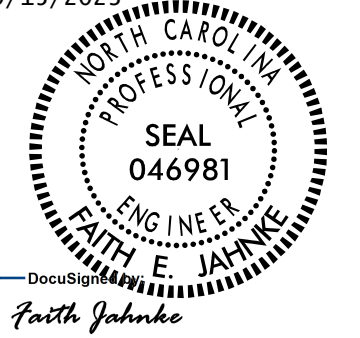

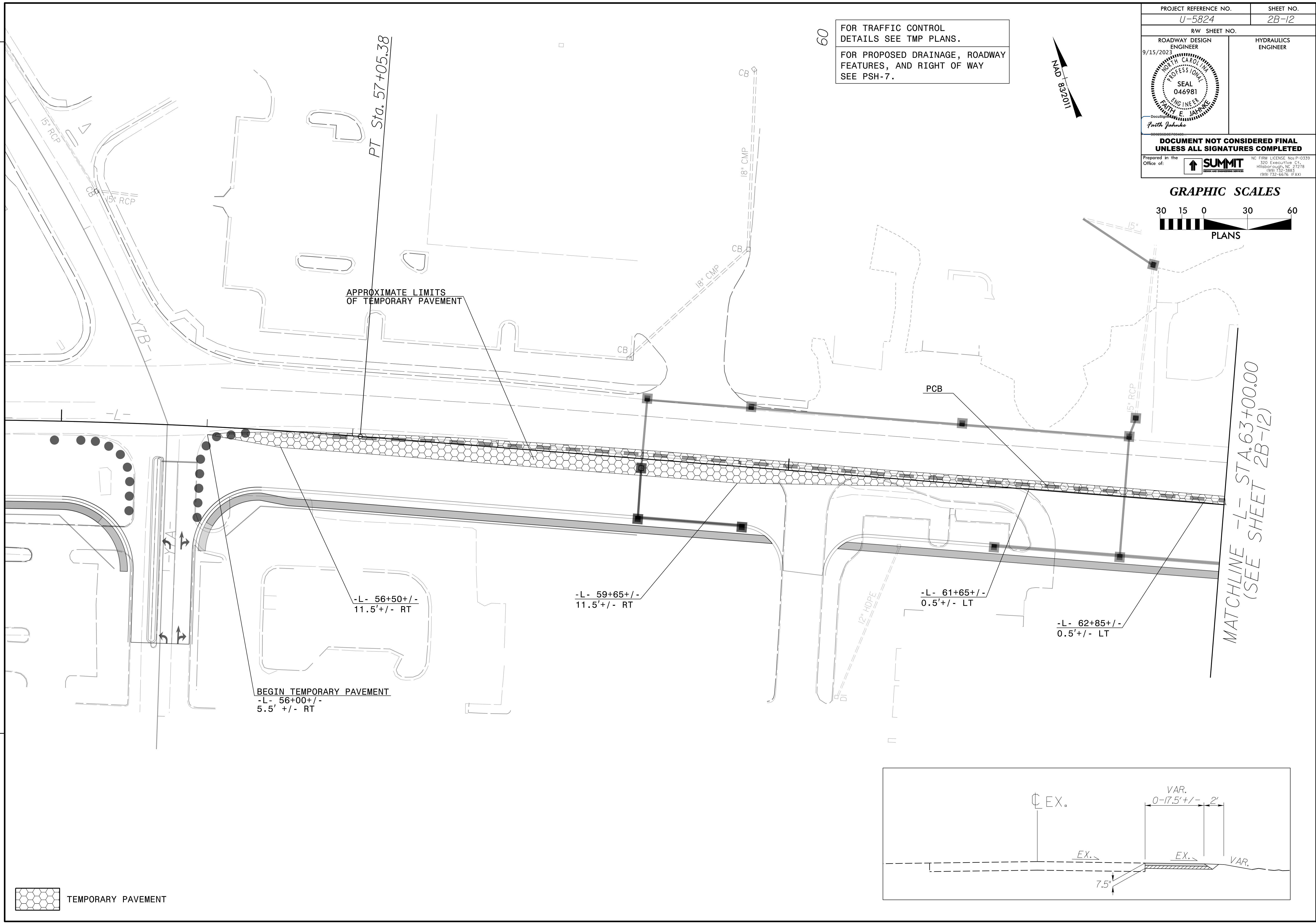
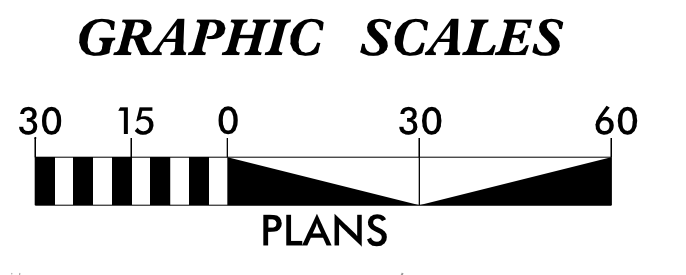
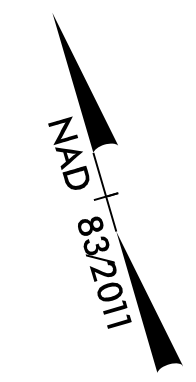


PROJECT REFERENCE NO. U-5824	SHEET NO. 2B-12
RW SHEET NO.	
ROADWAY DESIGN ENGINEER 9/15/2023	HYDRAULICS ENGINEER
	
DOCUMENT NOT CONSIDERED FINAL UNLESS ALL SIGNATURES COMPLETED	
Prepared in the Office of:	

60
 FOR TRAFFIC CONTROL
 DETAILS SEE TMP PLANS.
 FOR PROPOSED DRAINAGE, ROADWAY
 FEATURES, AND RIGHT OF WAY
 SEE PSH-7.



 TEMPORARY PAVEMENT

