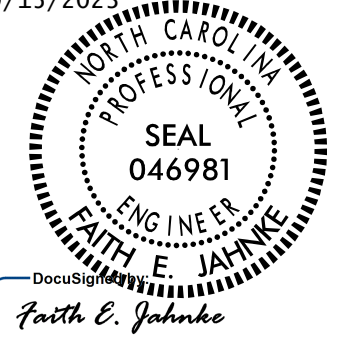



TEMPORARY ALIGNMENT 1 DETAIL

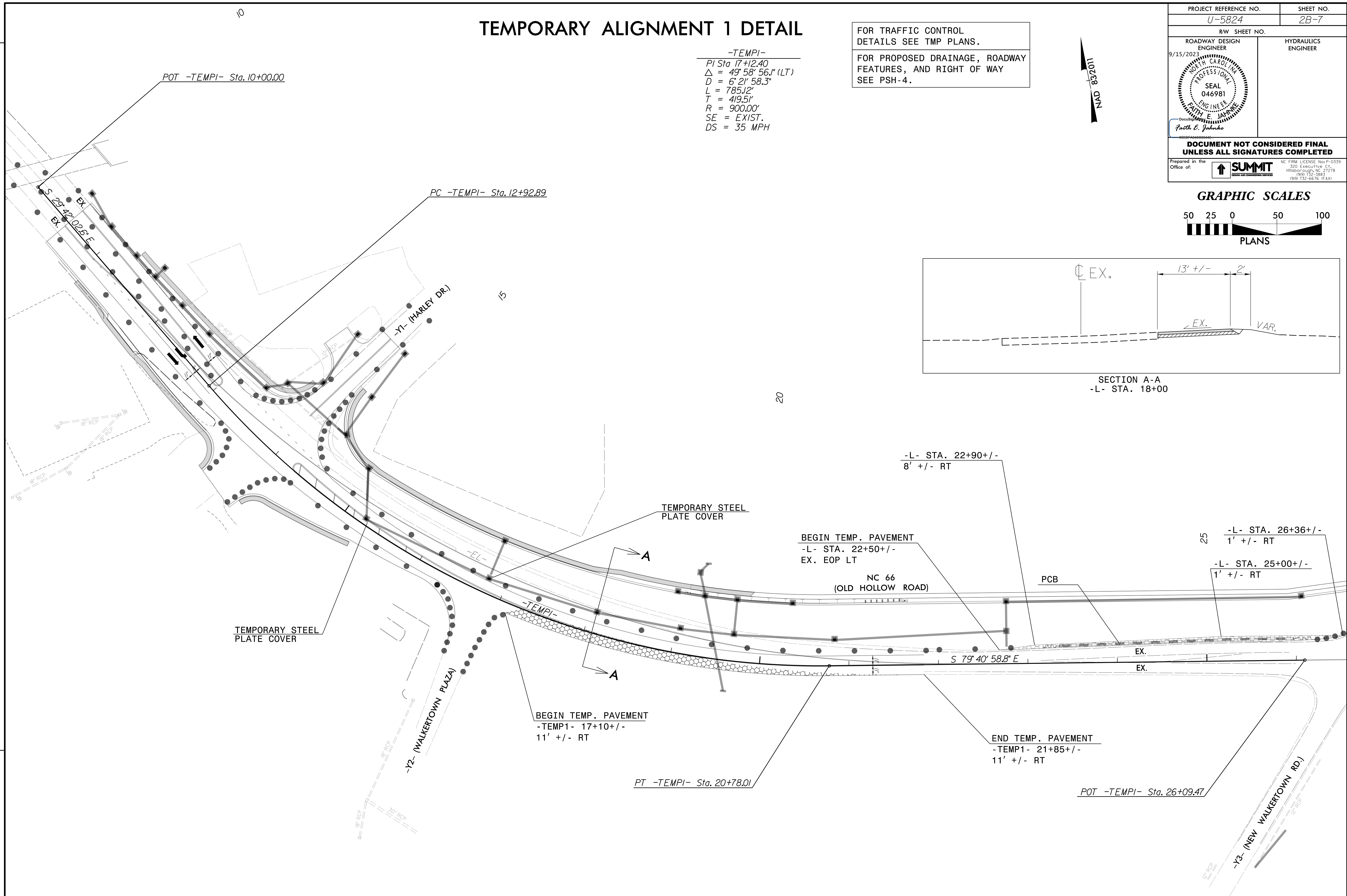
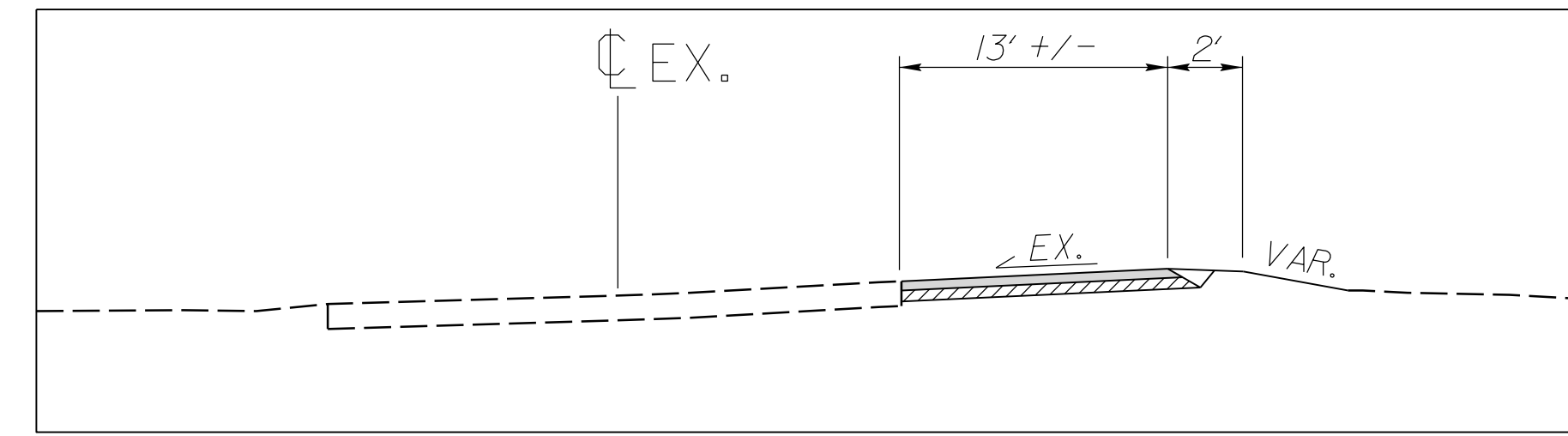
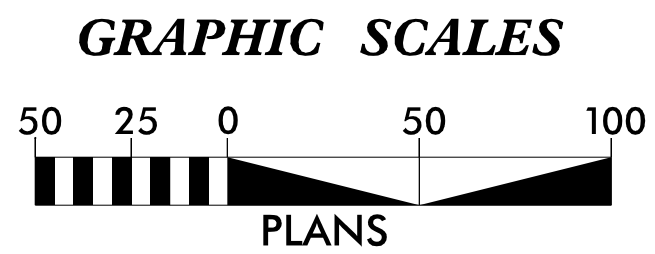
FOR TRAFFIC CONTROL
DETAILS SEE TMP PLANS.

FOR PROPOSED DRAINAGE, ROADWAY
FEATURES, AND RIGHT OF WAY
SEE PSH-4.

PROJECT REFERENCE NO. U-5824	SHEET NO. 2B-7
RW SHEET NO.	
ROADWAY DESIGN ENGINEER 9/15/2023	HYDRAULICS ENGINEER
	
DOCUMENT NOT CONSIDERED FINAL UNLESS ALL SIGNATURES COMPLETED	
Prepared in the Office of:	



-TEMPI-
 PI Sta 17+12.40
 $\Delta = 49^\circ 58' 56.1''$ (LT)
 $D = 6^\circ 21' 58.3''$
 $L = 785.12'$
 $T = 419.51'$
 $R = 900.00'$
 SE = EXIST.
 DS = 35 MPH




TEMPORARY PAVEMENT