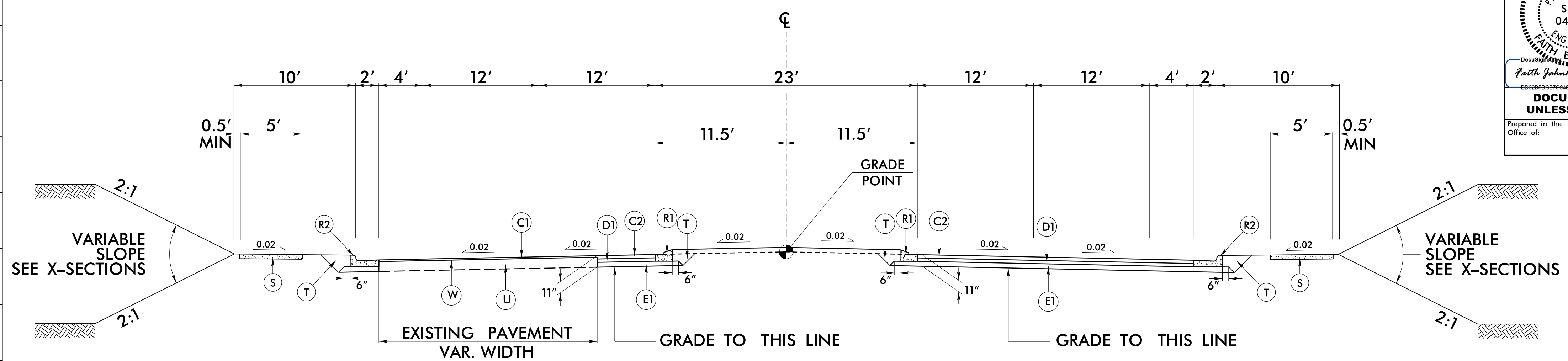


6/2/2023

| PAVEMENT SCHEDULE (FINAL PAVEMENT DESIGN) | |
|--|------------------|
| C1 | 1 1/2" S9.5B |
| C2 | 3" S9.5B |
| C3 | 2.5" S9.5B |
| C4 | VAR. S9.5B |
| D1 | 4" I19.0C |
| D2 | VAR. I19.0C |
| E1 | 4" B25.0C |
| E2 | 5" B25.0C |
| E3 | VAR. B25.0C |
| K | 12" CLASS IV |
| N | GEOTEXTILE |
| R1 | 1'-6" C & G |
| R2 | 2'-6" C & G |
| R3 | 2'-9" C & G |
| R4 | 5" MCI |
| R5 | 8"X18" CURB |
| S | 4" SIDEWALK |
| T | EARTH MATERIAL |
| U | EXIST. PAVEMENT |
| V1 | INCIDENTAL MILL. |
| V2 | 1 1/2" MILLING |
| W | WEDGING |

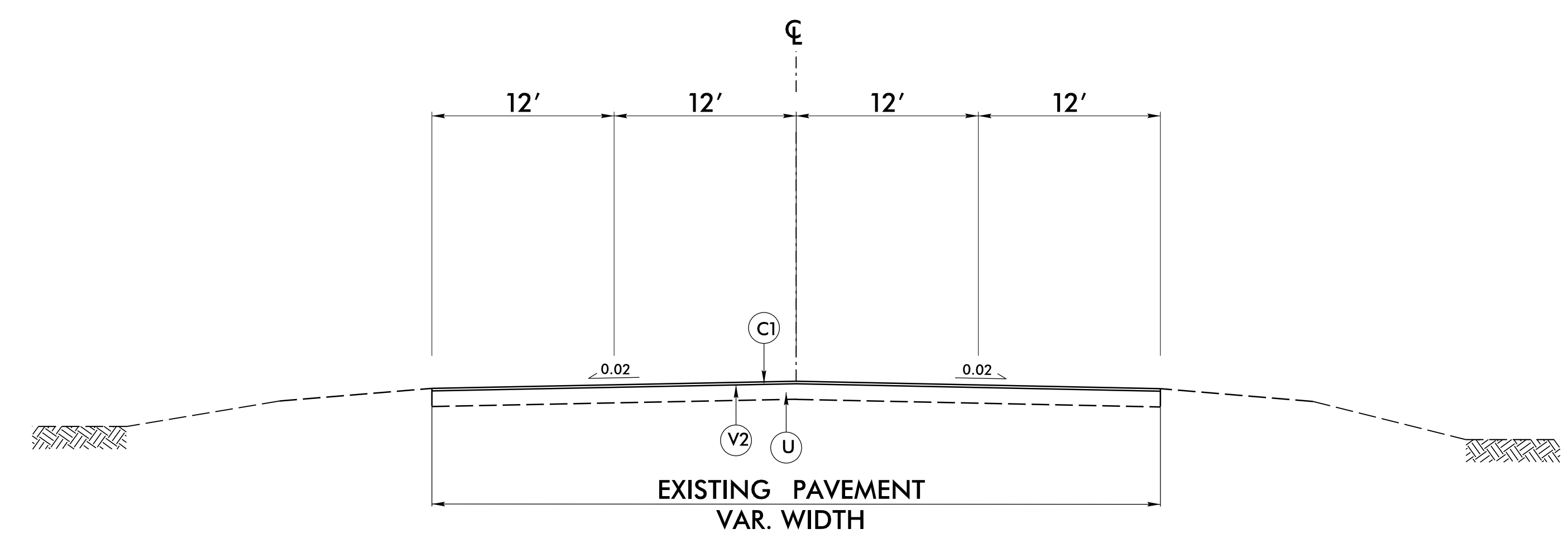
NOTE: PAVEMENT EDGE SLOPES ARE 1:1 UNLESS SHOWN OTHERWISE.



TYPICAL SECTION NO. 4

USE TYPICAL SECTION NO. 4

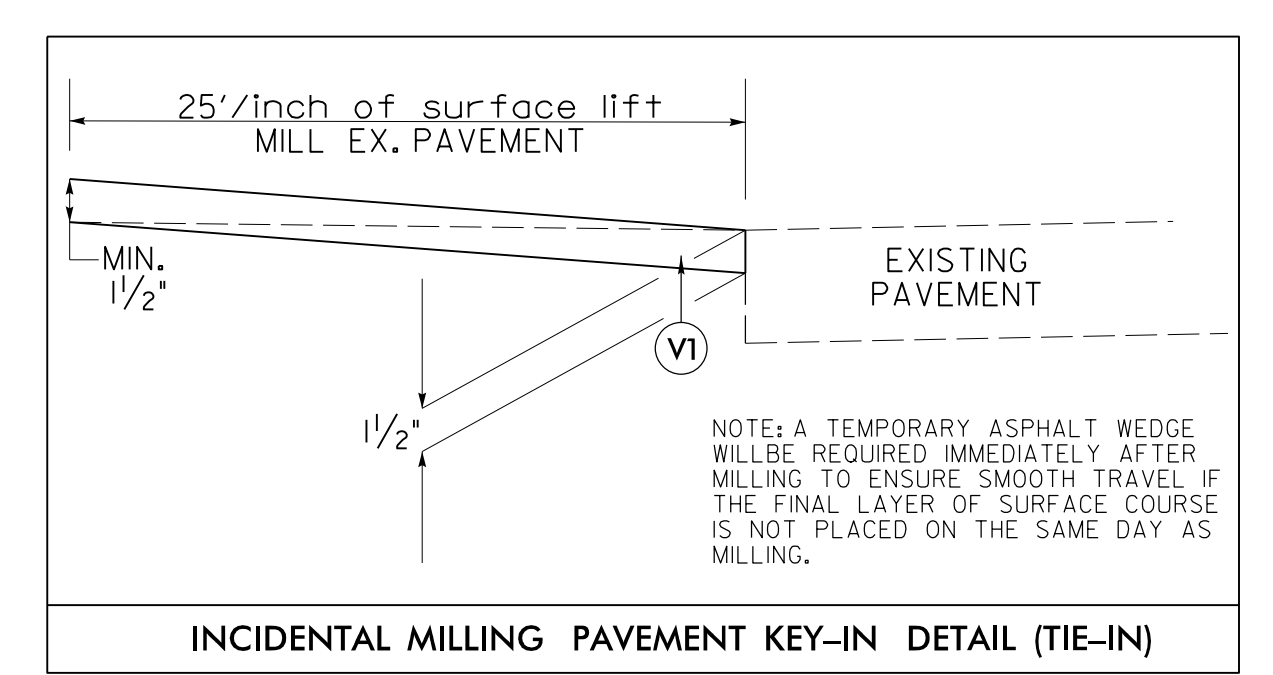
-L- STA 49+25.00 TO STA 73+08.00



TYPICAL SECTION NO. 5

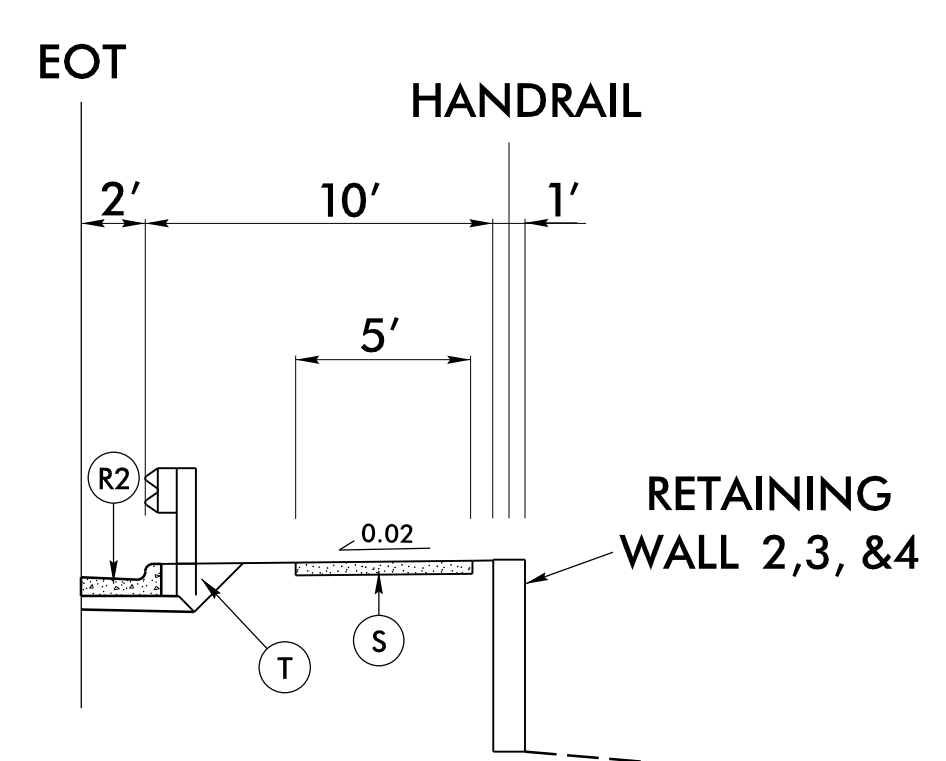
USE TYPICAL SECTION NO. 5

-L- STA 106+65.31 TO 108+40.00

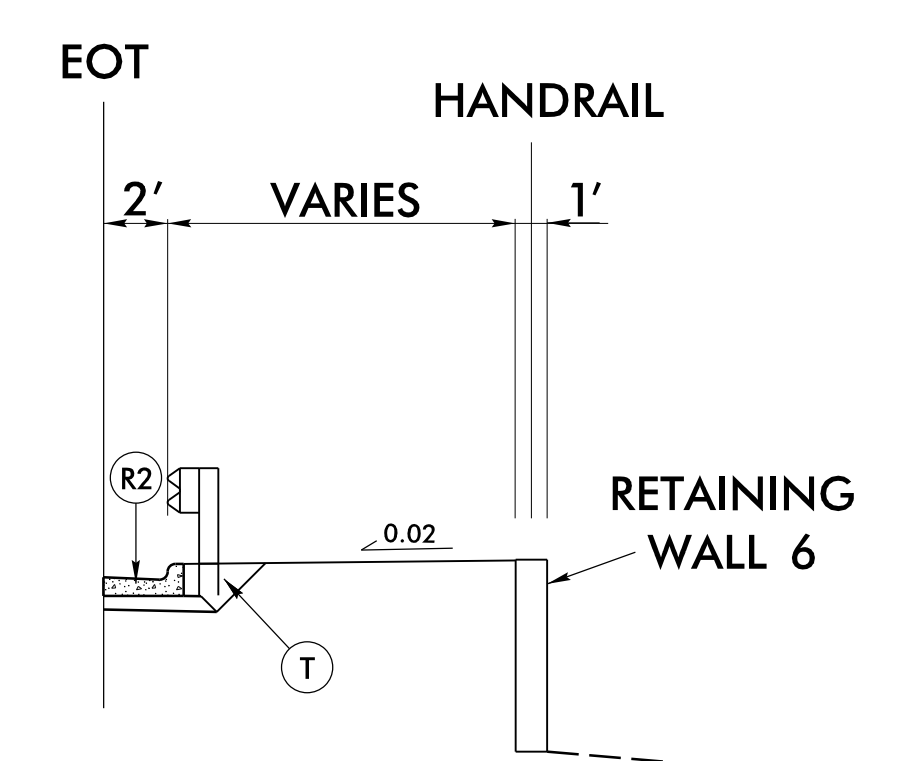


- L- STA 10+52.00 TO 11+27.45
- L- STA 98+01.00 TO 98+78.23
- L- STA 99+41.00 TO 100+19.00
- L- STA 105+90.30 TO 106+65.39
- Y1- 10+75.00 TO 11+12.50
- Y2- 11+37.50 TO 11+75.00
- Y3- 10+25.00 TO 10+62.50
- Y3- 14+87.50 TO 15+25.00
- Y4- 10+00.00 TO 10+37.50
- Y4- 13+37.50 TO 13+75.00
- Y5- 10+92.75 TO 10+55.25
- Y6- 11+62.50 TO 12+00.00
- Y7A- 11+12.50 TO 11+50.00
- Y7B- 12+00.00 TO 12+37.50
- Y8A- 12+55.15 TO 12+92.50
- Y8B- 11+25.00 TO 11+62.50
- Y9- 10+75.00 TO 11+12.50
- Y9- 13+37.50 TO 13+75.00
- Y11A- 10+00.00 TO 10+37.50
- Y11B- 11+87.50 TO 12+25.00

STATION RANGES ARE APPROXIMATE ONLY. GRADE MAY BE ADJUSTED BY ENGINEER TO ENSURE A PROPER TIE-IN.



USE IN CONJUNCTION WITH TYPICAL SECTION NO. 4
 -L- STA 53+00.00 TO STA 54+50.00 LT
 -L- STA 53+70.00 TO STA 55+39.79 RT
 -L- STA 56+17.20 TO STA 59+00.00 RT



USE IN CONJUNCTION WITH TYPICAL SECTION NO. 2
 -L- STA 99+61.00 TO STA 101+00.00 RT

| | |
|--|---|
| PROJECT REFERENCE NO. U-5824 | SHEET NO. 2A-3 |
| ROADWAY DESIGN ENGINEER 9/15/2023 FAITH JAHNKE | PAVEMENT DESIGN ENGINEER 9/15/2023 CONNIE K. JAMES |
| SEAL 046981 FAITH E. JAHNKE ENGINEER | SEAL 018969 CONNIE K. JAMES ENGINEER |
| DOCUMENT NOT CONSIDERED FINAL UNLESS ALL SIGNATURES COMPLETED | |
| Prepared in the Office of: SUMMIT DESIGN AND ENGINEERING SERVICES | NC FIRM LICENSE Nos P-0339 320 Executive Ct. Hillsborough, NC 27278 (919) 732-3883 (919) 732-6676 (FAX) |

14-SEP-2023 15:44
 U-5824_R03_2A-3.dgn
 Faith.Jahnke