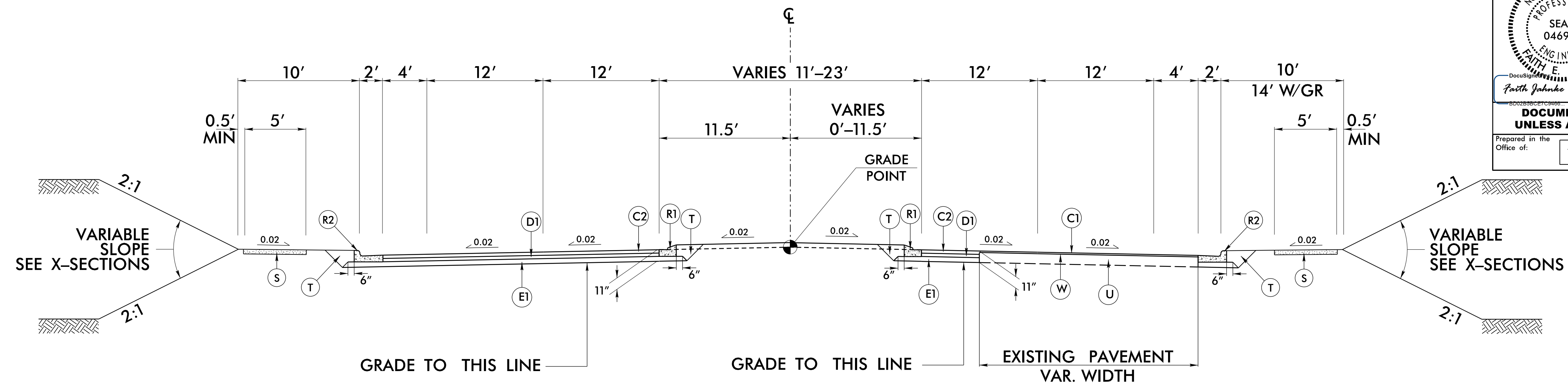


6/2/2019

PAVEMENT SCHEDULE (FINAL PAVEMENT DESIGN)	
C1	1 1/2" S9.5B
C2	3" S9.5B
C3	2.5" S9.5B
C4	VAR. S9.5B
D1	4" I19.0C
D2	VAR. I19.0C
E1	4" B25.0C
E2	5" B25.0C
E3	VAR. B25.0C
K	12" CLASS IV
N	GEOTEXTILE
R1	1'-6" C & G
R2	2'-6" C & G
R3	2'-9" C & G
R4	5" MCI
R5	8"X18" CURB
S	4" SIDEWALK
T	EARTH MATERIAL
U	EXIST. PAVEMENT
V1	INCIDENTAL MILL.
V2	1 1/2" MILLING
W	WEDGING

NOTE: PAVEMENT EDGE SLOPES ARE 1:1 UNLESS SHOWN OTHERWISE.

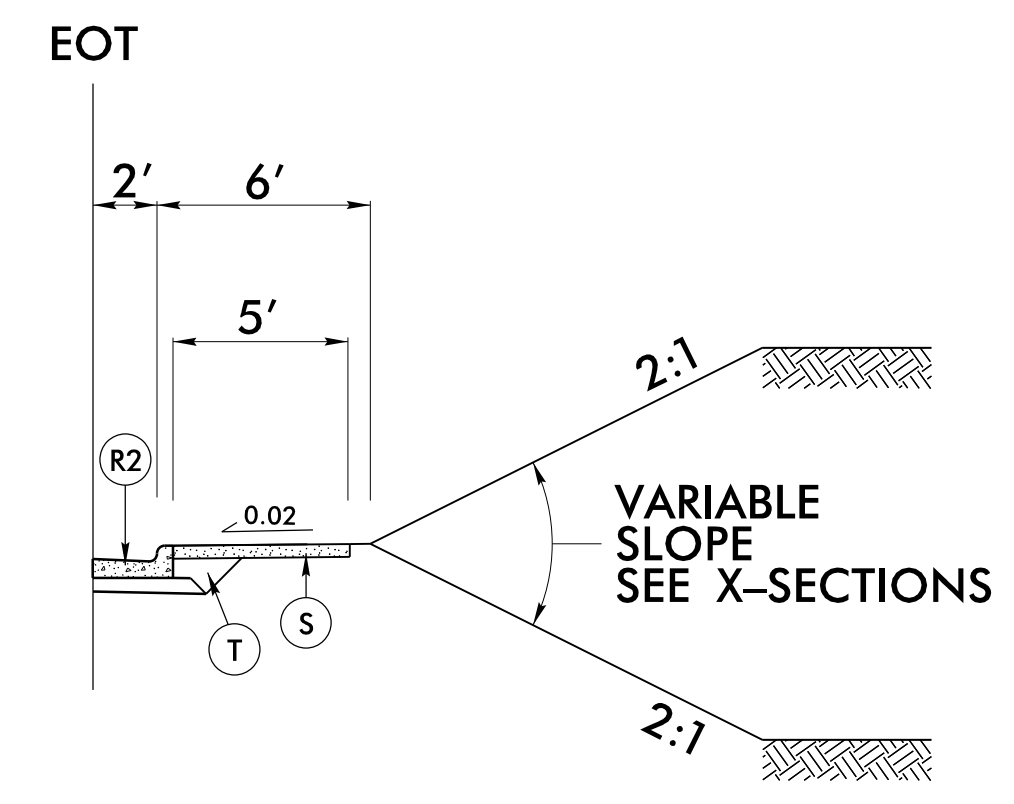
PROJECT REFERENCE NO. U-5824	SHEET NO. 2A-2
ROADWAY DESIGN ENGINEER 9/15/2023 FAITH E. JAHNKE SEAL 046981 NORTH CAROLINA PROFESSIONAL ENGINEER	PAVEMENT DESIGN ENGINEER 9/15/2023 CONNIE K. JAMES SEAL 018969 NORTH CAROLINA PROFESSIONAL ENGINEER
DOCUMENT NOT CONSIDERED FINAL UNLESS ALL SIGNATURES COMPLETED	
Prepared in the Office of: SUMMIT DESIGN AND ENGINEERING SERVICES	NC FIRM LICENSE No P-0339 320 Executive Ct. Hillsborough, NC 27278 (919) 732-3883 (919) 732-6676 (FAX)



TYPICAL SECTION NO. 3

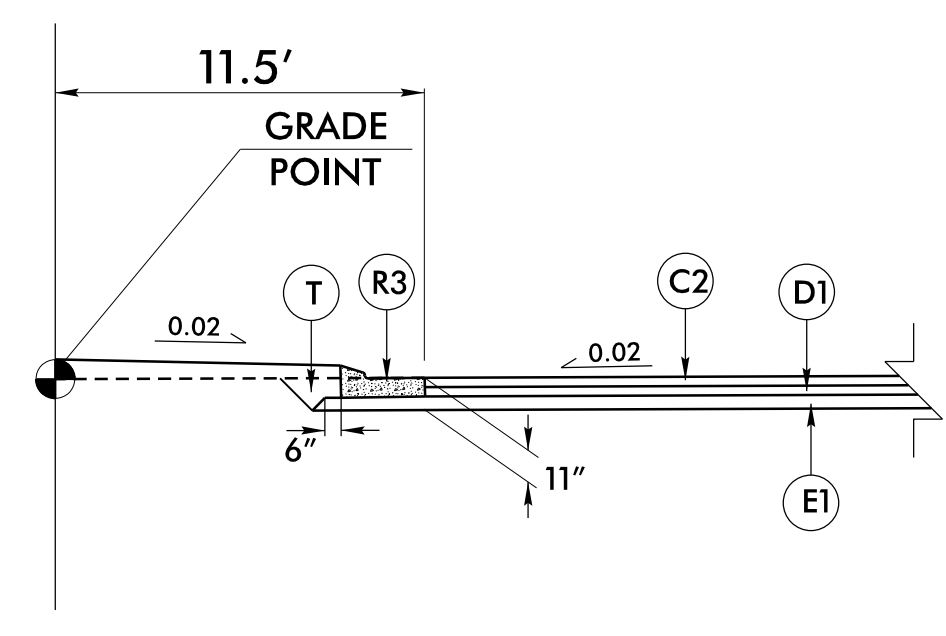
USE TYPICAL SECTION NO. 3

-L- STA 20+59.00 TO STA 49+25.00



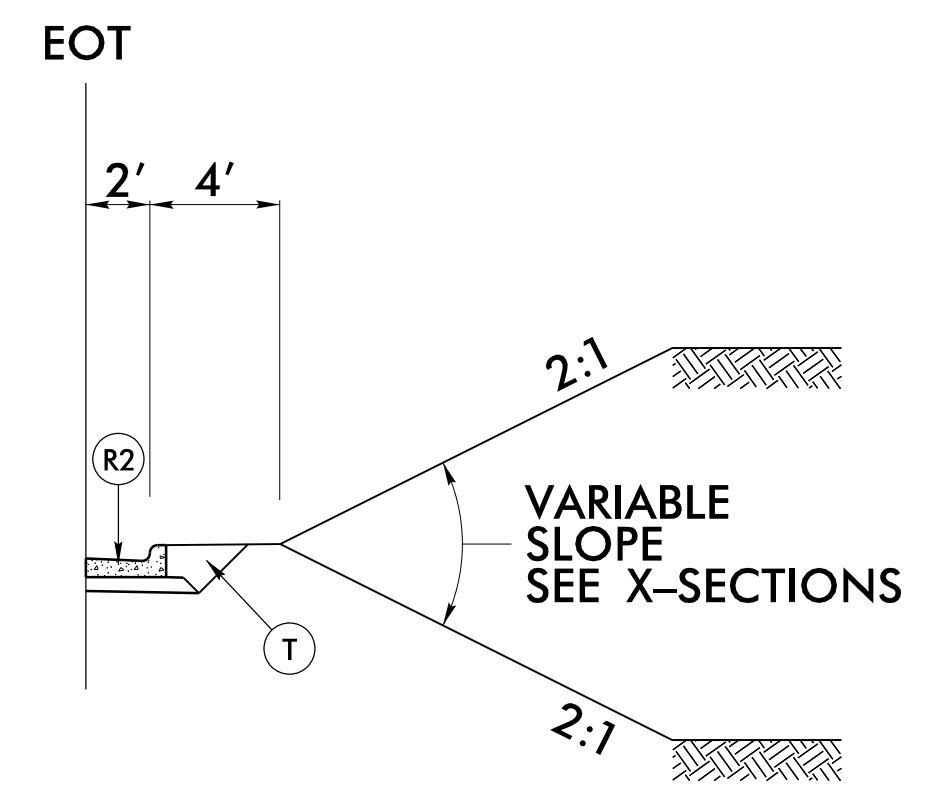
PARTIAL TYPICAL

USE IN CONJUNCTION WITH TYPICAL SECTION NO. 2
-L- STA 14+00.00 TO STA 17+50.00 LT
-L- STA 17+50.00 TO STA 20+59.00 RT



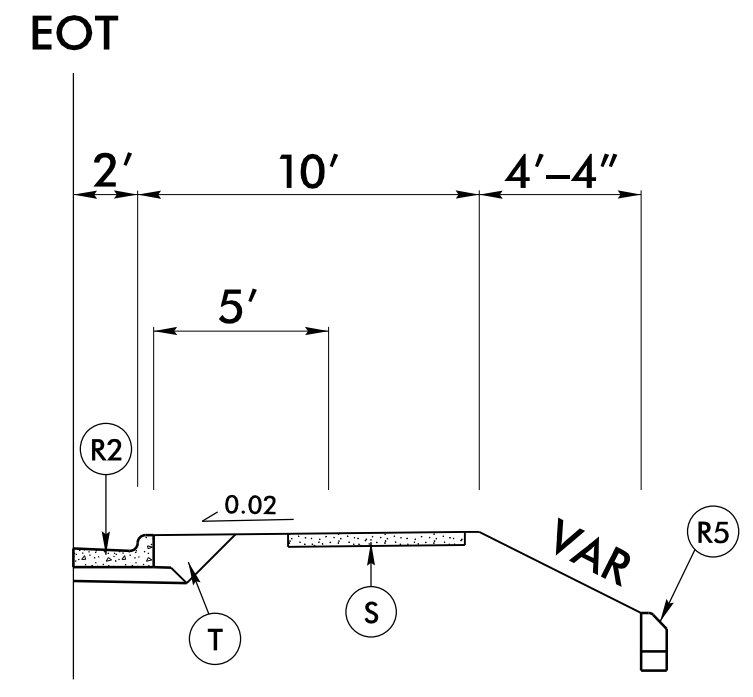
PARTIAL TYPICAL

USE IN CONJUNCTION WITH TYPICAL SECTION NO. 2, 3 & 4
-L- STA 17+28.72 TO 21+32.29
-L- STA 48+89.71 TO 50+52.75
-L- STA 52+24.14 TO 54+20.22
-L- STA 93+36.67 TO 96+98.68



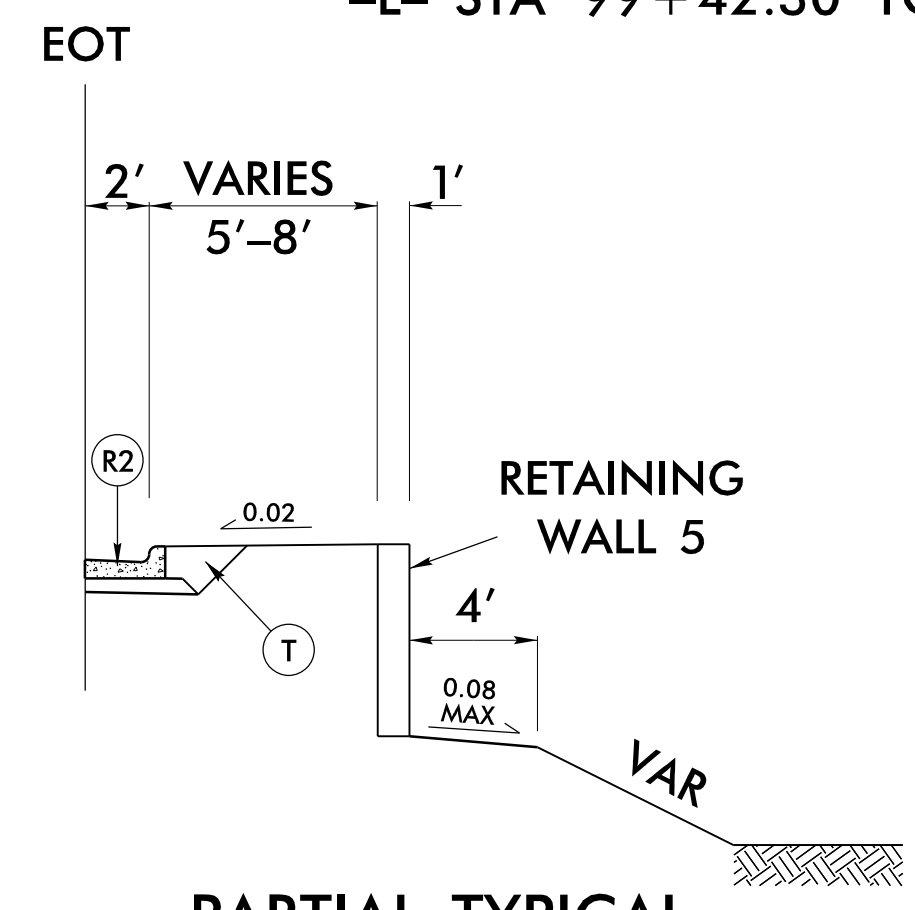
PARTIAL TYPICAL

USE IN CONJUNCTION WITH TYPICAL SECTION NO. 2
-L- STA 99+42.30 TO STA 101+82.70



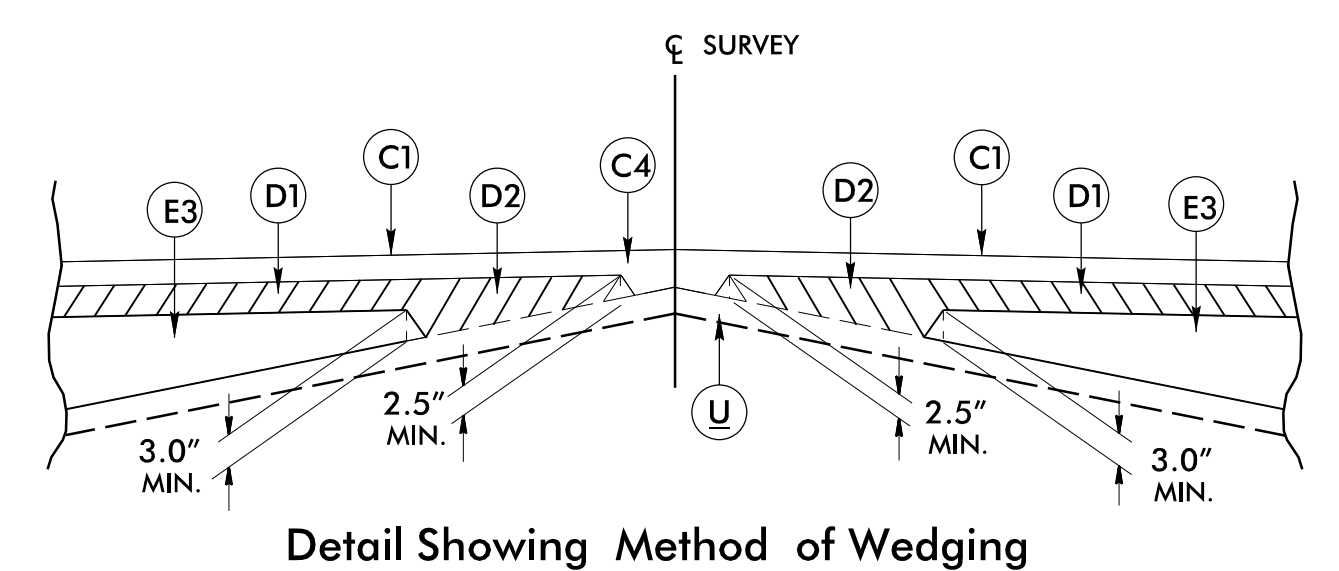
PARTIAL TYPICAL

USE IN CONJUNCTION WITH TYPICAL SECTION NO. 3
-L- STA 34+15.40 TO STA 37+89.05 RT
-L- STA 44+19.95 TO STA 44+99.00 RT



PARTIAL TYPICAL

USE IN CONJUNCTION WITH TYPICAL SECTION NO. 2
-L- STA 102+30.00 TO STA 105+50.00



Detail Showing Method of Wedging

14-SEP-2023 15:41
U-5824_R03.dgn
faith.jahnke