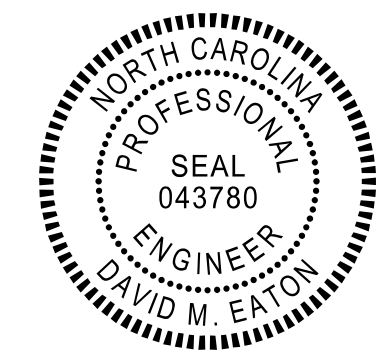


**STATE OF NORTH CAROLINA
DEPARTMENT OF TRANSPORTATION**

**SIGNING PLAN
BRUNSWICK COUNTY**

LOCATION: I-140 FROM US 17 TO NORTH OF US 74

<small>PROJECT REFERENCE NO.</small> I-6036	<small>SHEET NO.</small> SIGN-1
<small>DocuSigned by:</small> <i>David M. Eaton</i> <small>DDA1GSP247484F7...</small>	
<small>APPROVED:</small>	
<small>DATE:</small> 03/17/2023	
SEAL 	
DOCUMENT NOT CONSIDERED FINAL UNLESS ALL SIGNATURES COMPLETED	

T.I.P.: I-6036

ROADWAY STANDARD DRAWING

THE FOLLOWING ROADWAY STANDARDS AS APPEAR IN "ROADWAY STANDARD DRAWINGS" - PROJECT SERVICES UNIT - N.C. DEPARTMENT OF TRANSPORTATION - RALEIGH, N.C., DATED JANUARY 2018 ARE APPLICABLE TO THIS PROJECT AND BY REFERENCE HEREBY ARE CONSIDERED A PART OF THESE PLANS:

<u>STD. NO.</u>	<u>TITLE</u>
901.10	TYPE 'A' SIGNS
901.50	ARROWS AND SHIELDS
901.70	SIGN STRINGERS AND SUPPORT SPACING
901.80	SIGN MOUNTING DETAILS - FOR TYPE A AND TYPE B SIGNS

GENERAL NOTES

- . SIGNS FURNISHED BY STATE
- . CONFIRM IN WRITING AT LEAST 4 MONTHS IN ADVANCE, THE ACTUAL DATE THE DEPARTMENT FURNISHED SIGNS WILL BE REQUIRED.
- . IF REMOVAL OR RELOCATION OF SIGNS ON PRIVATE STREET (NON-STATE MAINTAINED) IS REQUIRED DUE TO CONSTRUCTION, THE CONTRACTOR SHALL INFORM THE ENGINEER. THE WORK WILL BE COMPLETED BY OTHERS.
- . WHEN EXISTING SIGNS ARE REMOVED AND INSTALLED ON NEW SUPPORTS, THE RE-ERECTION SHALL IMMEDIATELY FOLLOW THE REMOVAL.
- . DO NOT BEGIN FABRICATION FOR TYPES A & B SIGNS MOUNTED ON OVERHEAD STRUCTURES OR STEEL SUPPORTS UNTIL "S" DIMENSIONS HAVE BEEN FIELD VERIFIED.
- . SEE ROADWAY PLANS FOR GUARD/GUIDE RAIL DETAILS.

SUMMARY OF QUANTITIES

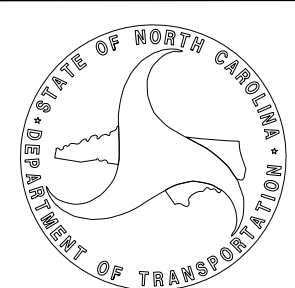
ITEM NO.		ITEM DESCRIPTION	QUANTITY	UNIT
DESC. NO.	SECT. NO.			
4109000000	904	SIGN ERECTION, TYPE A (OVERHEAD)	1	EA.
4234000000	907	DISPOSAL OF SIGN, A OR B (OVERHEAD)	1	EA.

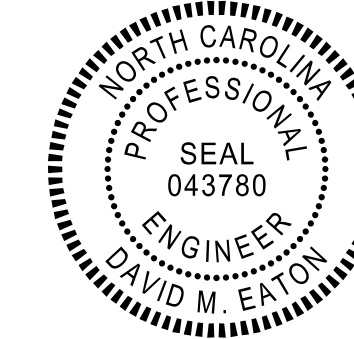
INDEX

<u>SHEET NO.</u>	<u>DESCRIPTION</u>
SIGN-1	TITLE SHEET
SIGN-1A	REVISED SIGNING STANDARD DRAWING
SIGN-2	SIGN DESIGNS
SIGN-3	SIGNING PLAN SHEET

PLAN PREPARED BY: N.C.D.O.T. SIGNING AND DELINEATION UNIT

Ayman Alqudwah, PE SIGNING & DELINEATION REGIONAL ENGINEER
David M. Eaton, PE SIGNING & DELINEATION PROJECT DESIGN ENGINEER





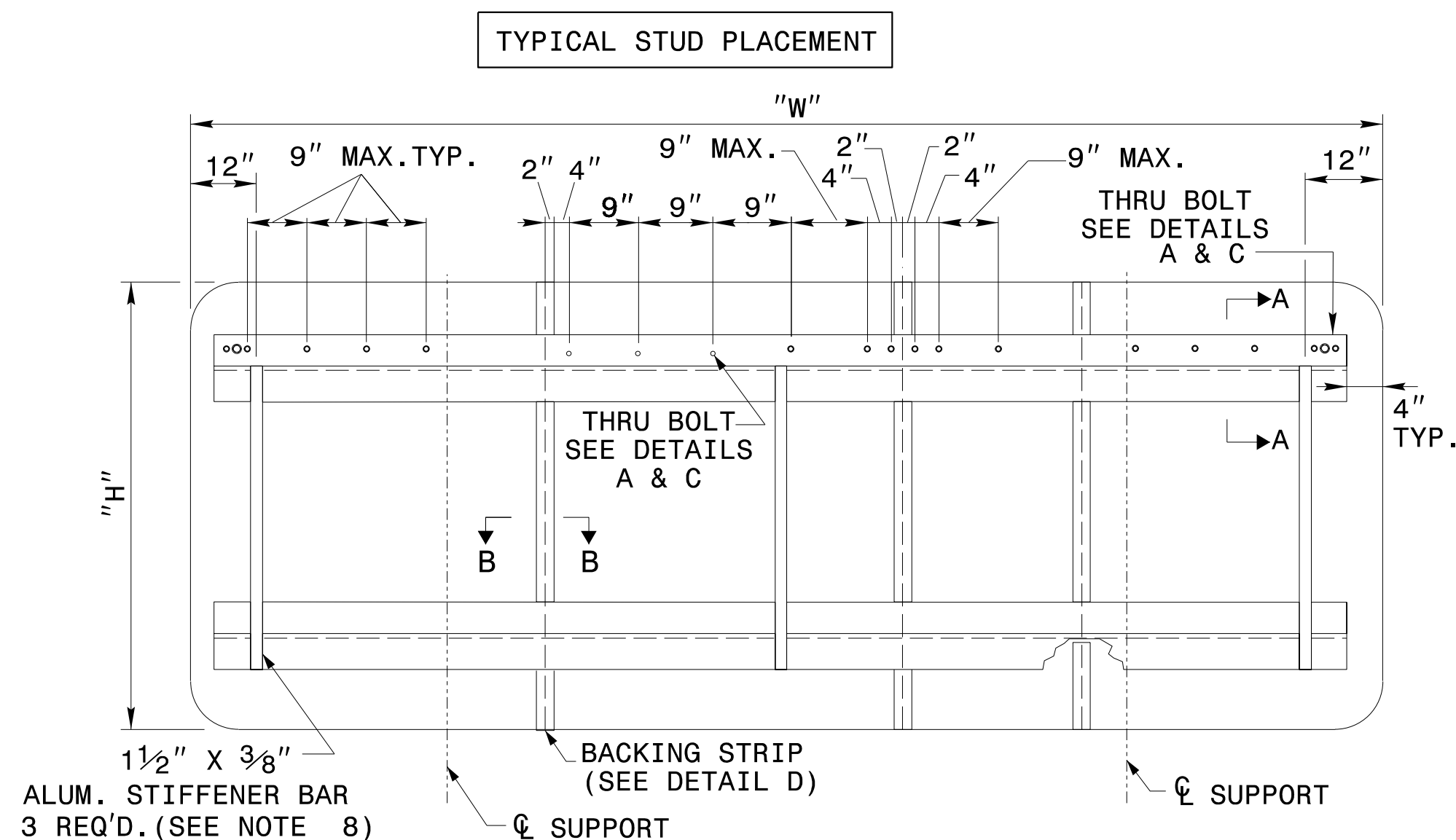
STATE OF NORTH CAROLINA
DEPT. OF TRANSPORTATION
DIVISION OF HIGHWAYS
RALEIGH, N.C.

2-19

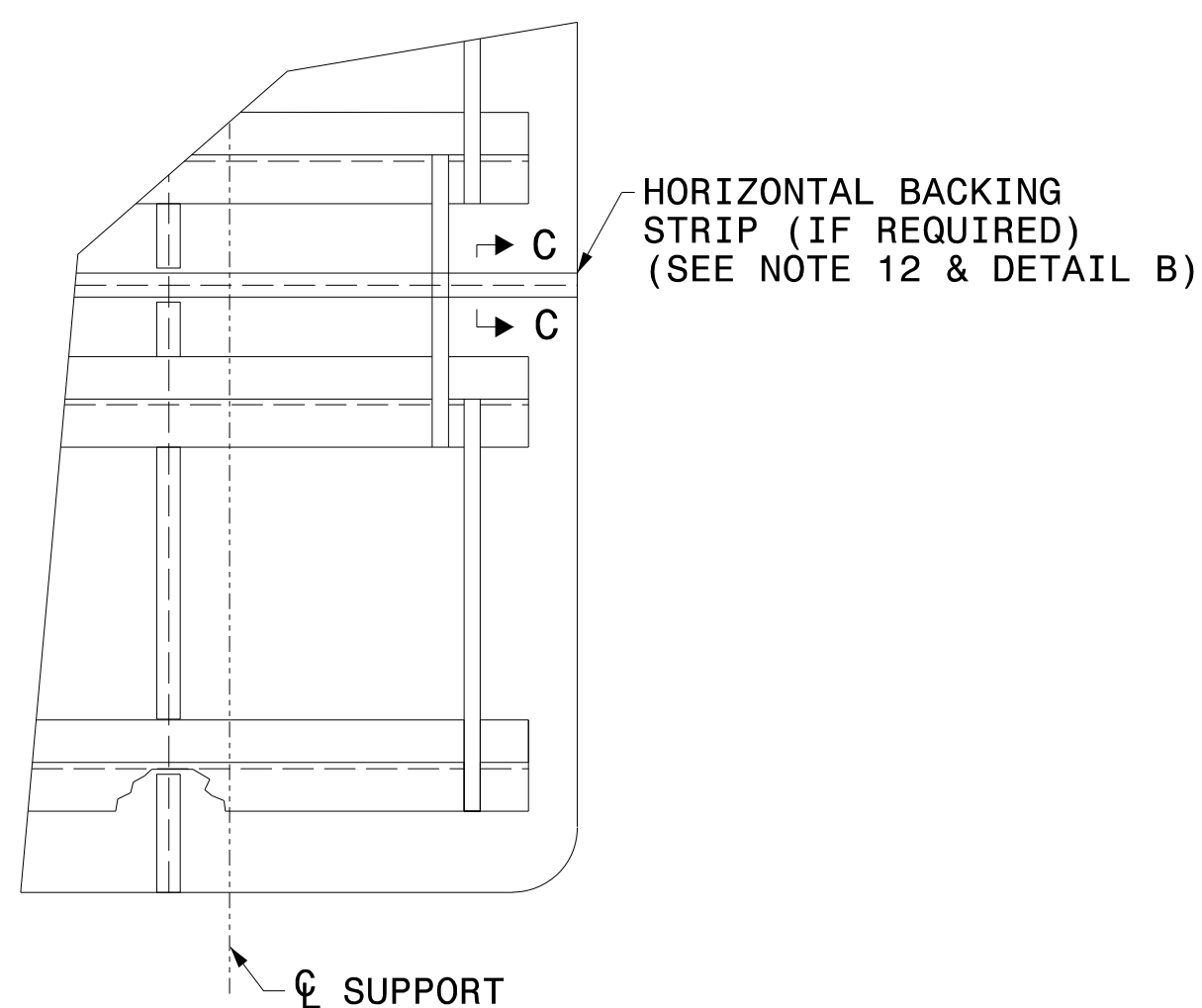
ENGLISH DETAIL DRAWING FOR
TYPE 'A' SIGNS
WELDED STUD CONSTRUCTION

SHEET 1 OF 2

901D10



HORIZONTAL BACKING STRIP



NOTES:

1. USE THE NUMBER AND SIZE OF SUPPORTS SHOWN ON THE SUPPORT CHART IN PROJECT PLANS.
2. FABRICATE SIGN PANEL SECTIONS WITH SHEETS 4'-0" WIDE. WHEN FABRICATING SIGNS WHICH ARE NOT MULTIPLES OF 4'-0" IN WIDTH, DO NOT CUT MORE THAN TWO SHEETS TO LESS THAN 4'-0" IN WIDTH. THESE PANELS SHALL NOT BE LESS THAN 1'-0" IN WIDTH.
3. SEE NCDOT STANDARD SPECIFICATIONS FOR ROADS AND STRUCTURES, FOR TYPE OF MATERIAL TO BE USED FOR SIGN PANELS, HANGER ASSEMBLIES, AND SUPPORTS.
4. USE GALVANIZED STEEL FOR BACKING PLATES AND MOUNTING BOLTS.
5. SEE ROADWAY STANDARD 904.20 WHEN TYPE "B" SECONDARY SIGN MOUNTING IS REQUIRED.
6. DETAILS FOR TYPE "A" SECONDARY SIGNS SHALL BE THE SAME AS FOR TYPE "A" SIGNS.
7. THE VERTICAL DIMENSION BETWEEN PRIMARY AND SECONDARY SIGNS IS TWO (2) INCHES.
8. ADJUST STIFFENERS TO AVOID CONFLICT WITH SUPPORTS.
9. SEE ROADWAY STANDARD 901.70 FOR SUPPORT AND "Z" BAR SPACING.
10. FABRICATE SIGNS TALLER THAN 12'-0" AS TWO SEPARATE SIGNS WITH A HORIZONTAL SPLICE. LOCATE STRINGERS ON EACH SECTION OF THE SIGN BY THE SIGN STRINGER CHART. (SEE ROADWAY STANDARD 901.70)
11. FABRICATE SIGNS TALLER THAN 12'-0" BUT SHORTER THAN 14'-6" WITH A HORIZONTAL SPLICE LOCATED 7'-0" FROM BOTTOM OF SIGN.
12. FABRICATE SIGNS 14'-6" TALL AND TALLER WITH A HORIZONTAL SPLICE. LOCATE THE SPLICE AT LEAST HALF OF THE SIGN HEIGHT FROM THE BOTTOM AND AT LEAST 7'-0" FROM THE TOP.
13. THERE SHALL ONLY BE A 1/8" GAP BETWEEN THE VERTICAL BACKING STRIP AND THE "Z" BAR.
14. SEE ROADWAY STANDARD 901.80 FOR DETAILS SHOWING SIGN MOUNTING TO SUPPORTS.
15. PLACE NYLON WASHER UNDER HEAD OF 3/8" THRU BOLTS.
16. FABRICATE EACH SIGN WITH 3/8" DIA. THRU BOLT, 4" FROM EACH END OF EACH "Z" BAR THRU SIGN PANEL AND "Z" BAR. SEE DETAILS A & C.
17. FABRICATE EACH SIGN WITH 3/8" DIA. THRU BOLT CENTERED IN EACH PANEL THRU THE TOP AND BOTTOM "Z" BAR. CENTERED THRU BOLT REQUIRED IN END PANELS GREATER THAN 2'-0" WIDE. SEE DETAILS A & C.
18. THRU BOLTS WILL HAVE A MINIMUM 1/16" TO MAXIMUM 1/8" GAP

STATE OF NORTH CAROLINA
DEPT. OF TRANSPORTATION
DIVISION OF HIGHWAYS
RALEIGH, N.C.

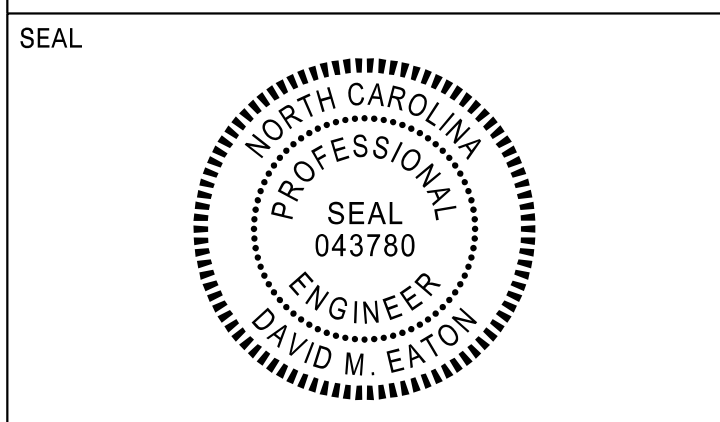
2-19

ENGLISH DETAIL DRAWING FOR
TYPE 'A' SIGNS
WELDED STUD CONSTRUCTION

SHEET 1 OF 2

901D10

APPROVED: *David M. Eaton*
DocuSigned by: DA0A1C5F247484F7...
 DATE: 03/17/2023



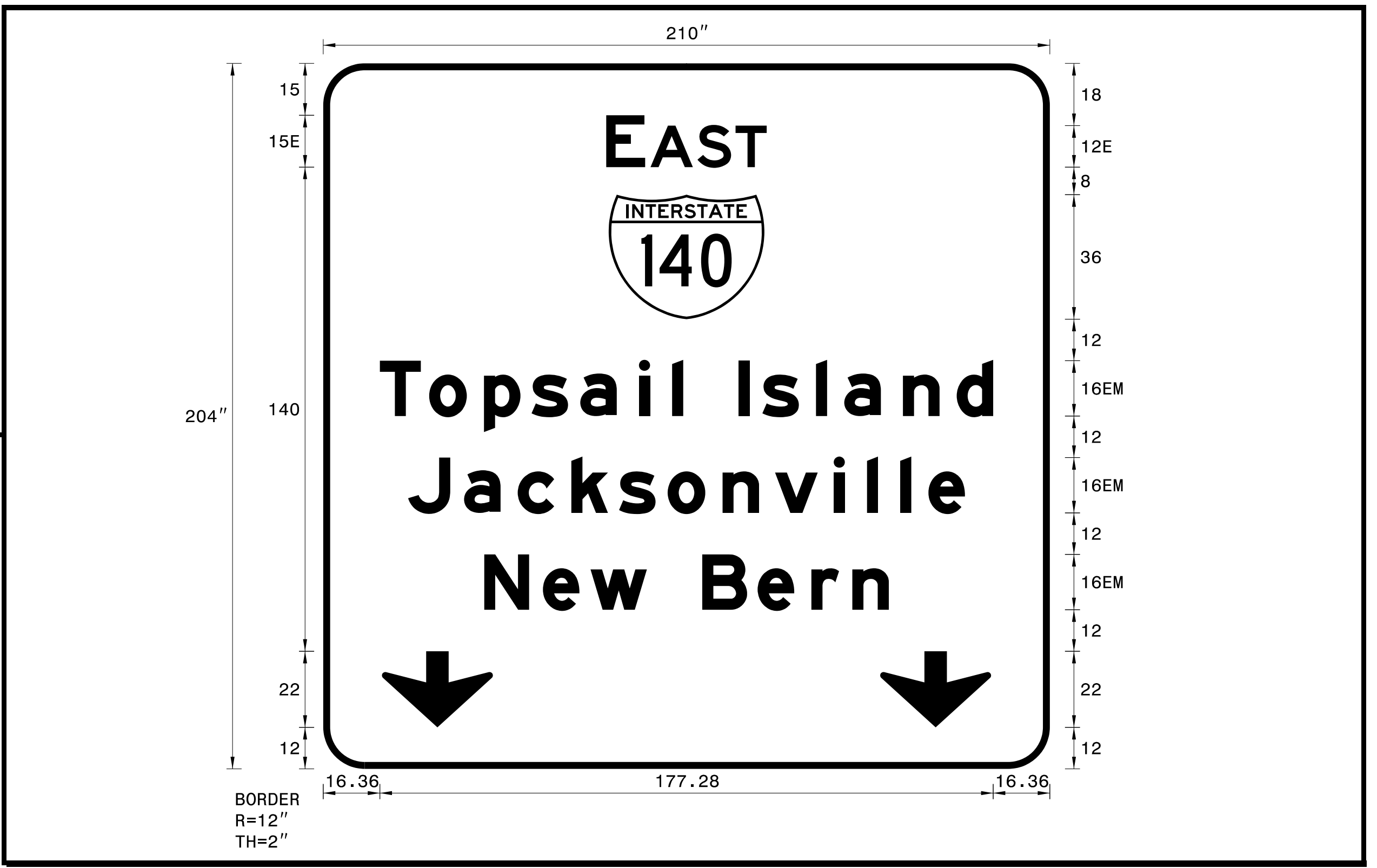
**DOCUMENT NOT CONSIDERED FINAL
 UNLESS ALL SIGNATURES COMPLETED**

SIGN NUMR: 1 TYPE: A Overhead QUANTITY: 1 SIGN WIDTH: 210" HEIGHT: 204" TOTAL AREA: 297.5 Sq.Ft.
 MAT'L: 0.125 " ALUMINUM BORDER TYPE: FLUSH RECESS: 0" WIDTH: 2" RADII: 12" NO. Z BARS: 6 LENGTH: 202.0 "

BACKG. COLOR: Green COPY COLOR: White DESIGN BY: DME PROJECT ID: I-6036 CHECKED BY: AIA LOCATION: I-540 DATE: Nov 02, 2022 DIV: 03

N. C. DEPARTMENT OF TRANSPORTATION DIVISION OF HIGHWAYS TRANSPORTATION MOBILITY AND SAFETY SIGNING AND DELINEATION

SYMBOL	X	Y	WID	HT
M1_1	82.5	130	45	36
ARDOWN	16.97	12	32.06	22
ARDOWN	160.97	12	32.06	22



- USE NOTES: 1,3,5
1. Legend and border shall be direct applied Grade A reflective sheeting.
 2. Legend and border shall be direct applied Grade C reflective sheeting.
 3. Shields shall be Grade A reflective sheeting on 0.032" aluminum and demountable.
 4. Background shall be Grade B reflective sheeting.
 5. Background shall be Grade C reflective sheeting.
 6. Center arrow(s) vertically on sign.

Letter spacings are to start of next letter

	Letter spacings are to start of next letter																Series/Size
																	Text Length
E	A	S	T														E 2000
81.81	11.25	1.53	13.56	11.04	9	81.81											46.38
T	o	p	s	a	i	l	I	s	l	a	n	d					EM 2000
16.36	14.24	15.84	13.76	14.08	16.96	9.6	3.2	16	6.88	15.52	8.16	16.96	15.52	10.56	16.36	177.28	
J	a	c	k	s	o	n	v	i	l	l	e					EM 2000	
24.52	16.16	15.52	15.52	13.76	14.08	15.84	15.2	16.96	9.6	9.6	8.16	10.56	24.52			160.96	
N	e	w	B	e	r	n										EM 2000	
46.52	16.96	13.76	16.32	16	16	15.52	11.84	10.56	46.52							116.96	

Spacing Factor is 1 unless specified otherwise
 FILENAME: GSENG

03/17/23
 C:\Data\stuf\16036\16036_1140_Maintenance\16036_Guidesign_1sign_designs.dgn
 User:meaton

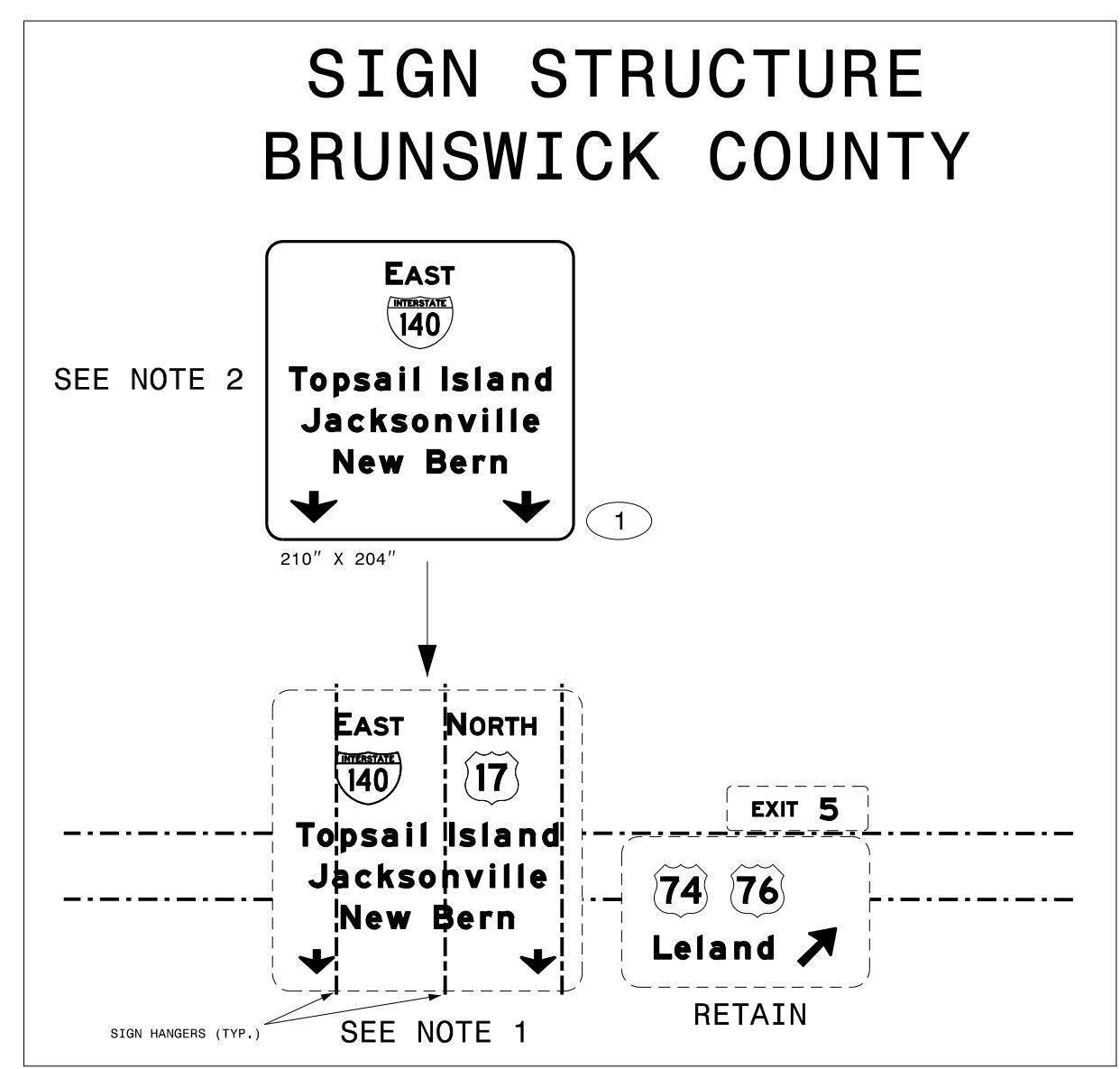
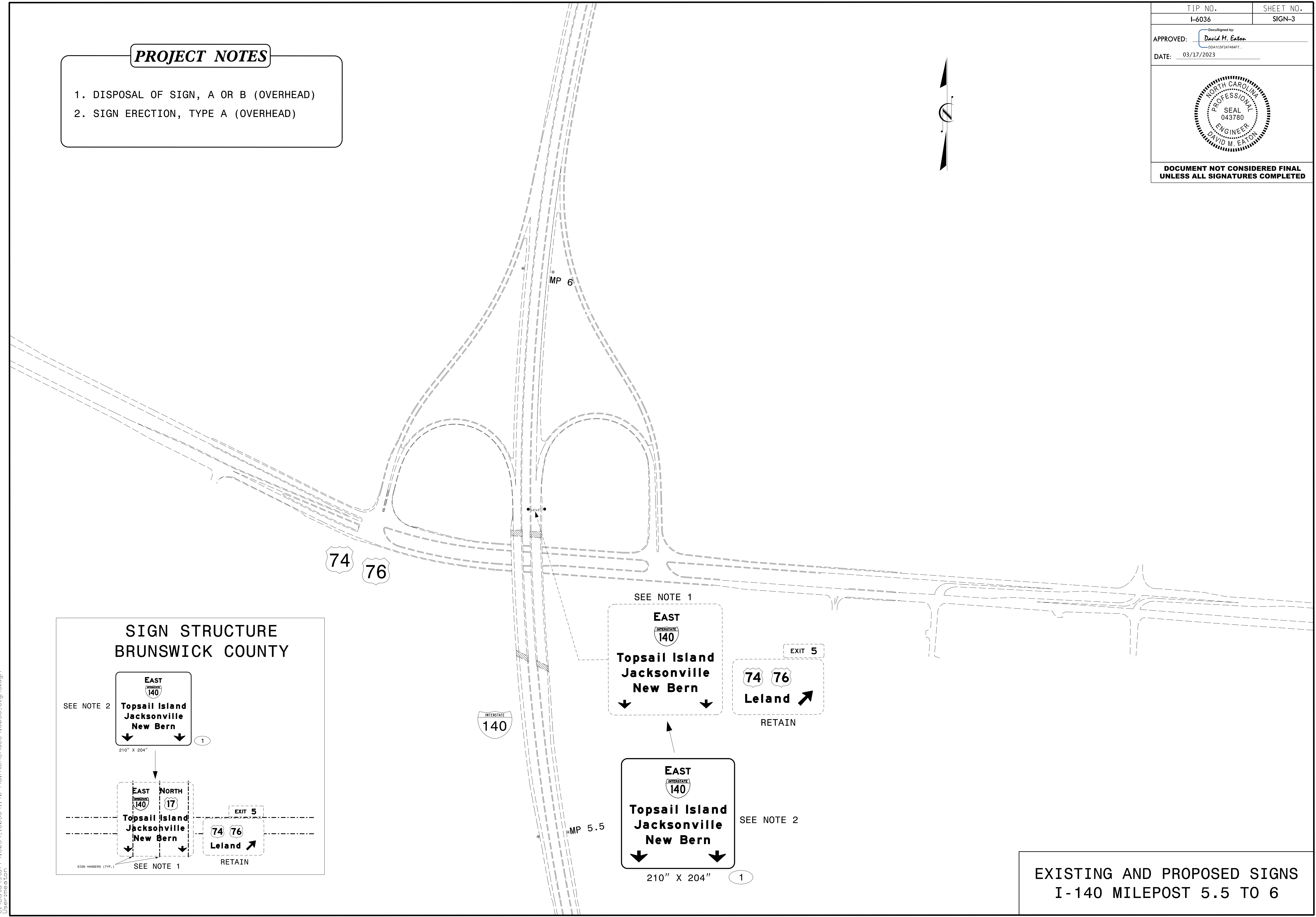
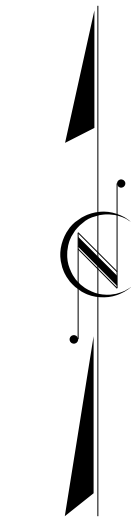
TYPE A & B SIGN DESIGNS



**DOCUMENT NOT CONSIDERED FINAL
 UNLESS ALL SIGNATURES COMPLETED**

PROJECT NOTES

1. DISPOSAL OF SIGN, A OR B (OVERHEAD)
2. SIGN ERECTION, TYPE A (OVERHEAD)



**EXISTING AND PROPOSED SIGNS
 I-140 MILEPOST 5.5 TO 6**

03/17/23
 C:\Data\stufF\16036_16036_1140_Maintenance\16036_Sign3.dgn
 User:meaton