

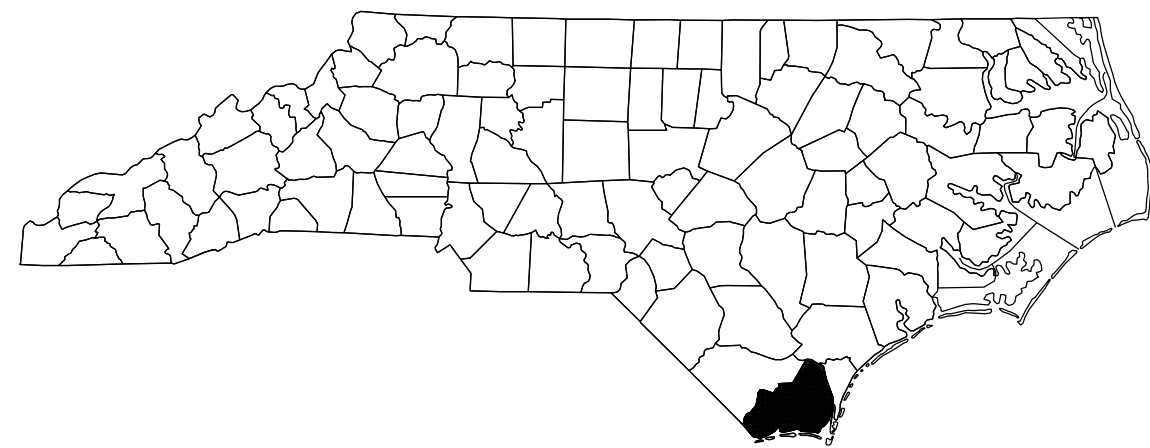
STATE OF NORTH CAROLINA
DIVISION OF HIGHWAYS

BRUNSWICK COUNTY

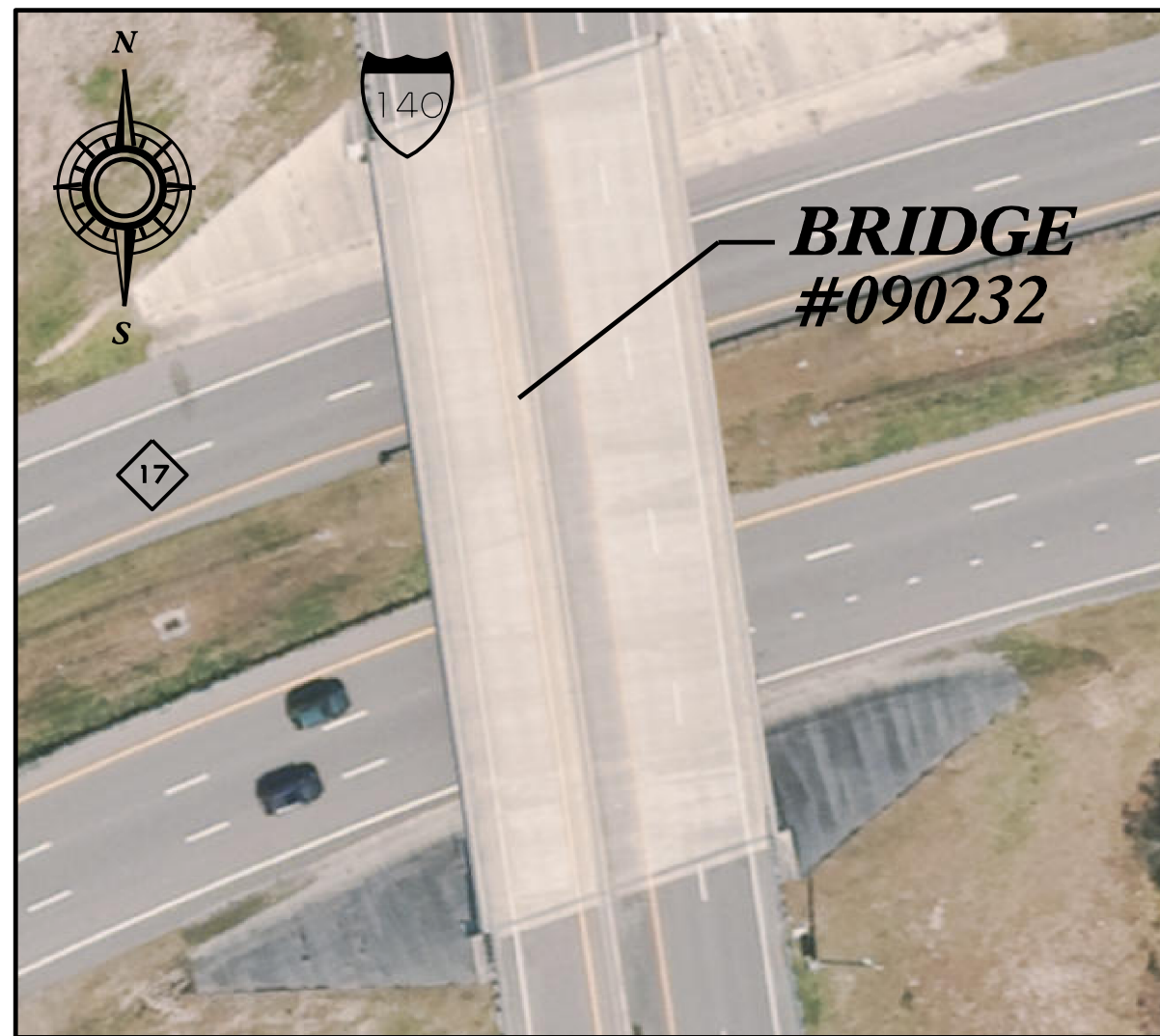
STATE	STATE PROJECT REFERENCE NO.	SHEET NO.	TOTAL SHEETS
N.C.	I-6036		
STATE PROJ. NO.	F.A. PROJ. NO.	DESCRIPTION	
47985.1.1		P.E.	
47985.3.1	0140003	CONST.	

PROJECT: I-6036

CONTRACT NO: C204866

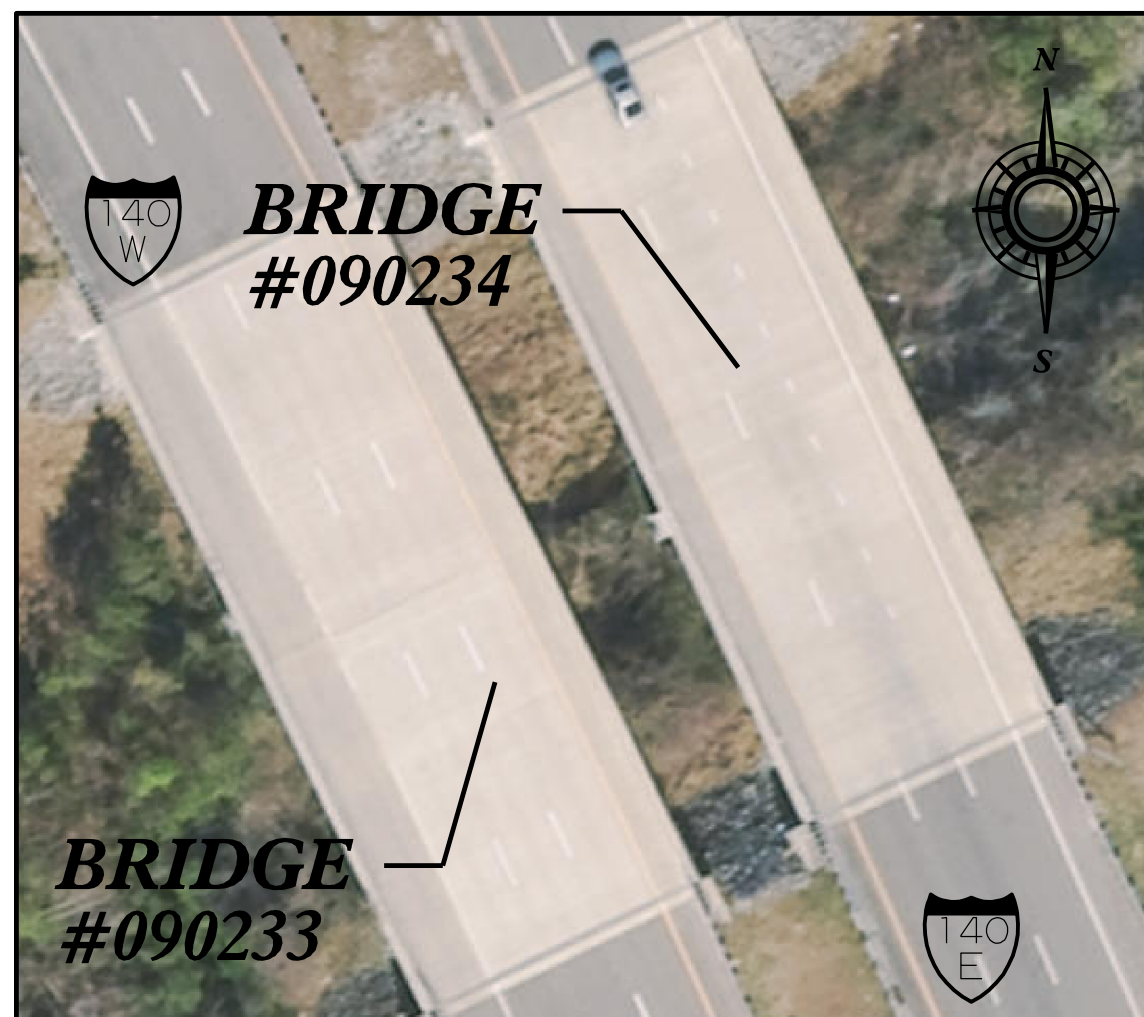


- LOCATION:**
- BRIDGE #090232 ON I-140 WBL & EBL OVER US 17
 - BRIDGE #090233 ON I-140 WBL OVER MORGAN CREEK TRIBUTARY
 - BRIDGE #090234 ON I-140 EBL OVER MORGAN CREEK TRIBUTARY
 - BRIDGE #090235 ON I-140 WBL OVER MORGAN CREEK TRIBUTARY
 - BRIDGE #090236 ON I-140 EBL OVER MORGAN CREEK TRIBUTARY
 - BRIDGE #090237 ON I-140 WBL OVER MORGAN CREEK TRIBUTARY
 - BRIDGE #090238 ON I-140 EBL OVER MORGAN CREEK TRIBUTARY
 - BRIDGE #090239 ON I-140 WBL OVER WILDLIFE CROSSING
 - BRIDGE #090240 ON I-140 EBL OVER WILDLIFE CROSSING
 - BRIDGE #090241 ON I-140 WBL OVER WILDLIFE CROSSING
 - BRIDGE #090242 ON I-140 EBL OVER WILDLIFE CROSSING

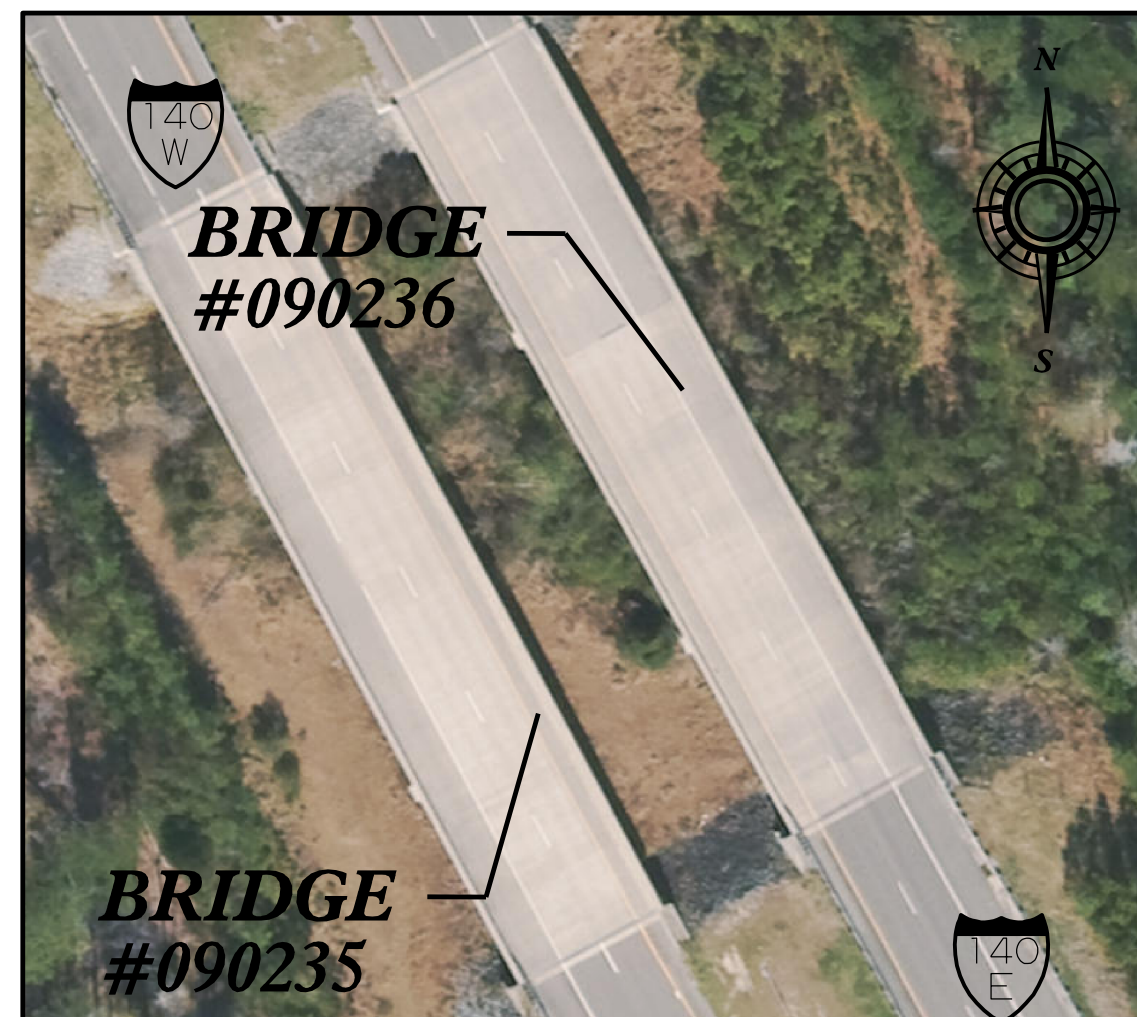


VICINITY MAP

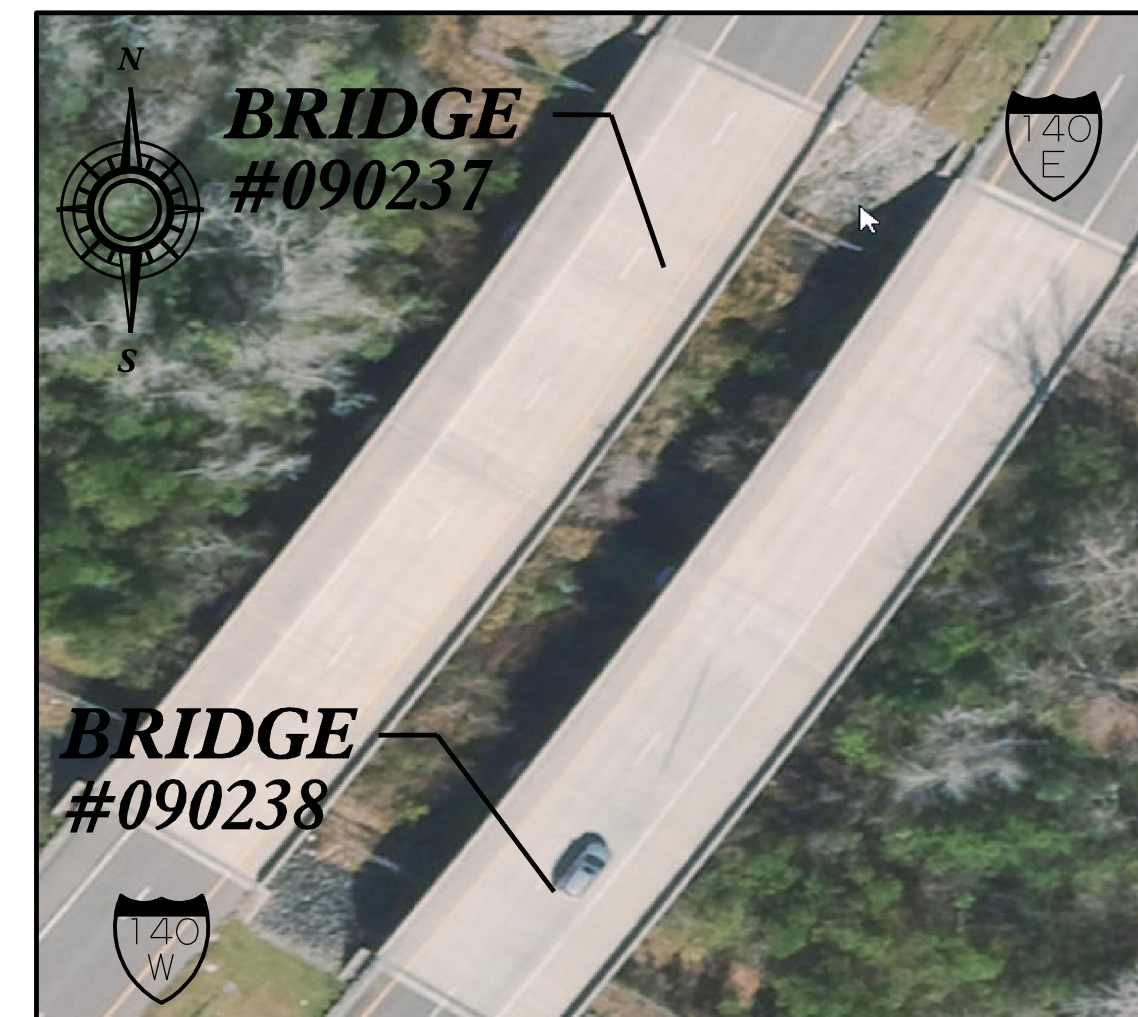
TYPE OF WORK: BRIDGE PRESERVATION - JOINT REPLACEMENT, DECK SURFACE REPAIRS, AND SILANE DECK TREATMENT.



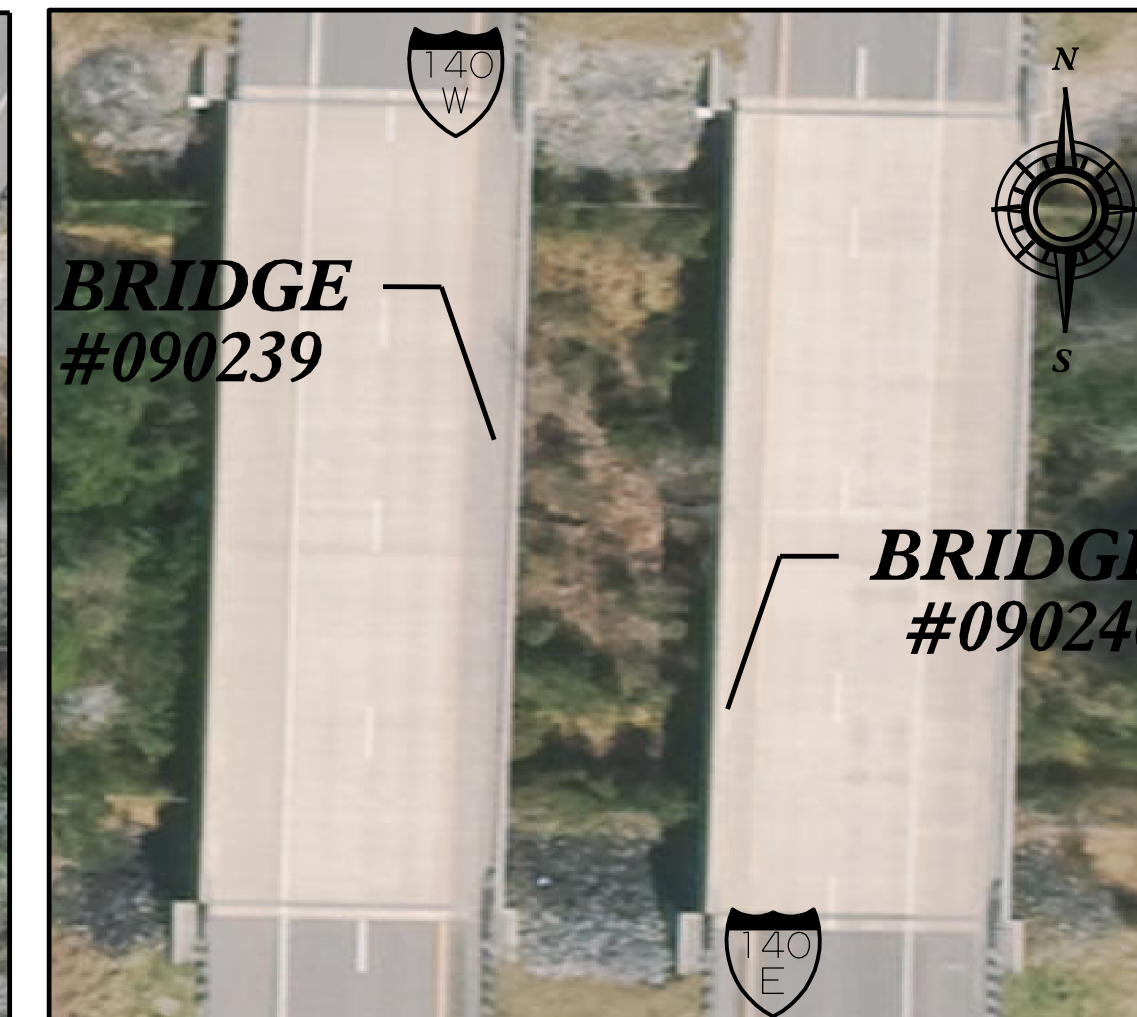
VICINITY MAP



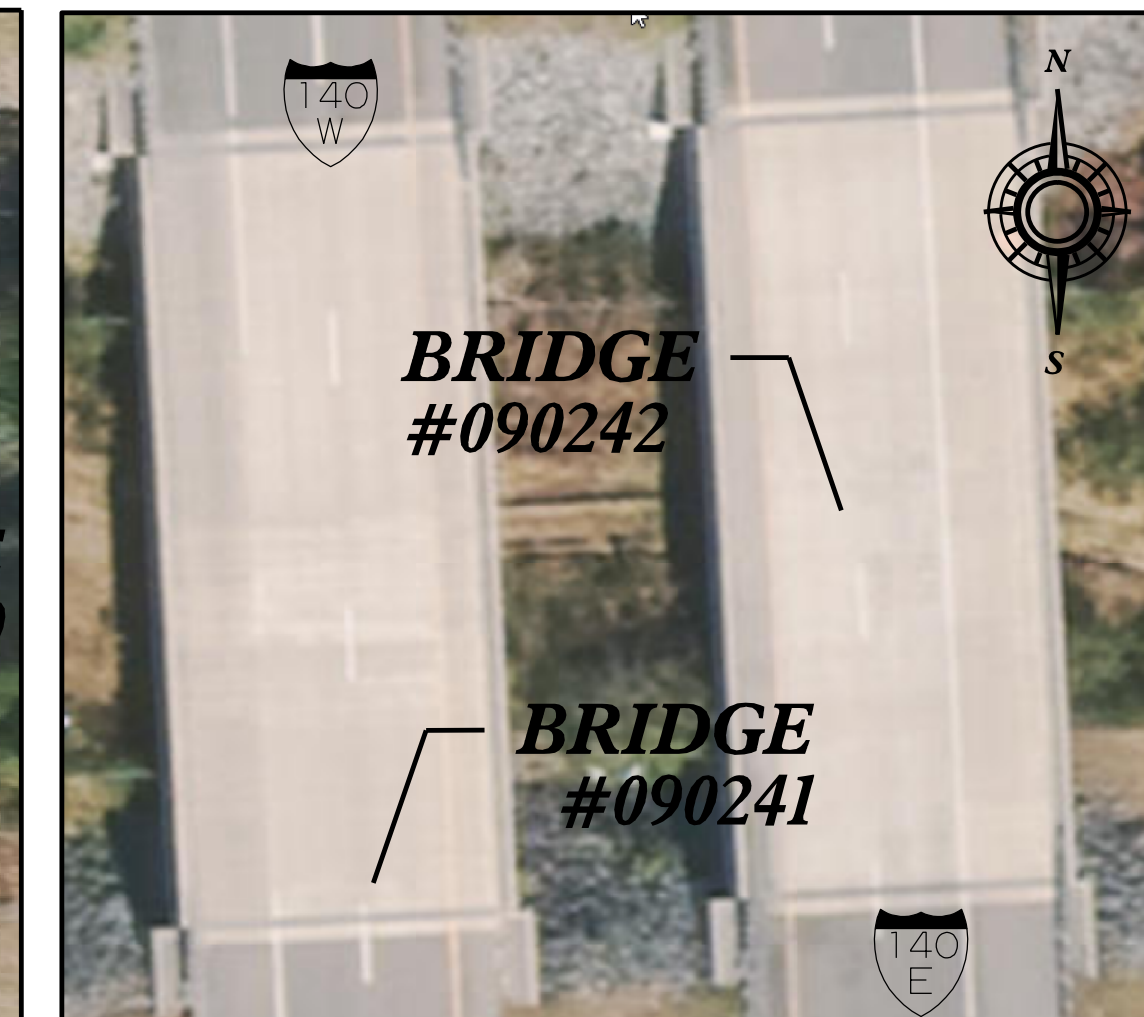
VICINITY MAP



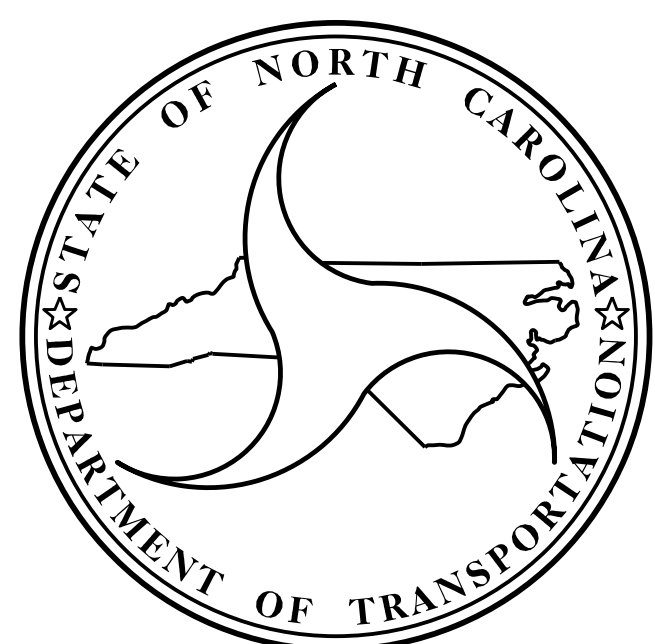
VICINITY MAP



VICINITY MAP



VICINITY MAP



DESIGN DATA

BRIDGE #090232	- ADT 2015	- 1,100
BRIDGE #090233	- ADT 2018	- 5,750
BRIDGE #090234	- ADT 2018	- 5,750
BRIDGE #090235	- ADT 2018	- 5,750
BRIDGE #090236	- ADT 2018	- 5,750
BRIDGE #090237	- ADT 2018	- 5,750
BRIDGE #090238	- ADT 2018	- 5,750
BRIDGE #090239	- ADT 2018	- 5,750
BRIDGE #090240	- ADT 2018	- 5,750
BRIDGE #090241	- ADT 2018	- 5,750
BRIDGE #090242	- ADT 2018	- 5,750

PROJECT LENGTH

BRIDGE #090232	- .035 MILE
BRIDGE #090233	- .028 MILE
BRIDGE #090234	- .028 MILE
BRIDGE #090235	- .045 MILE
BRIDGE #090236	- .045 MILE
BRIDGE #090237	- .045 MILE
BRIDGE #090238	- .046 MILE
BRIDGE #090239	- .030 MILE
BRIDGE #090240	- .030 MILE
BRIDGE #090241	- .020 MILE
BRIDGE #090242	- .020 MILE

Prepared in the Office of:
DIVISION OF HIGHWAYS
STRUCTURES MANAGEMENT UNIT
1000 BIRCH RIDGE DR.
RALEIGH, N.C. 27610

2018 STANDARD SPECIFICATIONS

LETTING DATE :

November 21, 2023

KRISTY ALFORD, PE
PROJECT ENGINEER

P. KOREY NEWTON, PE
PROJECT DESIGN ENGINEER