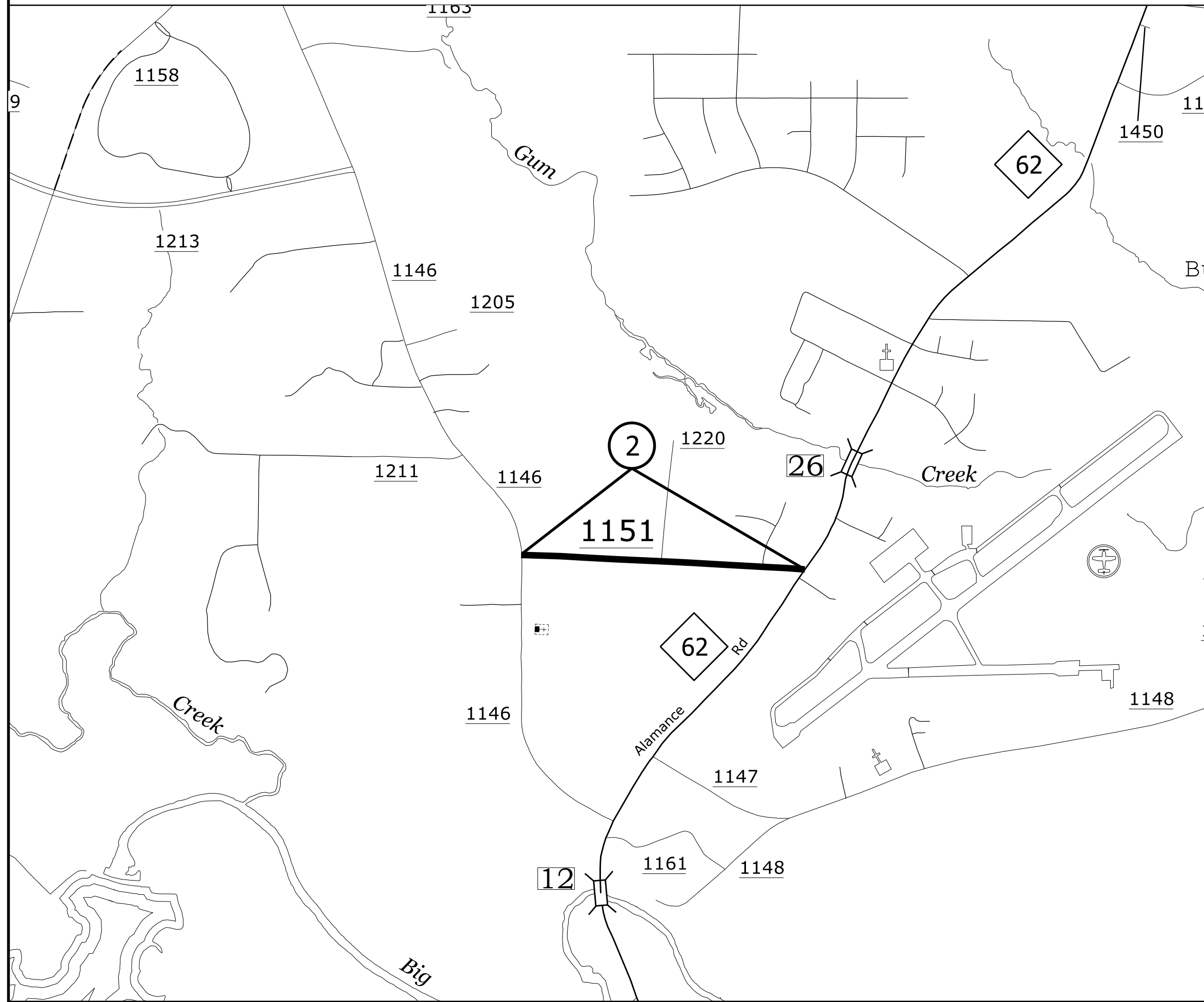


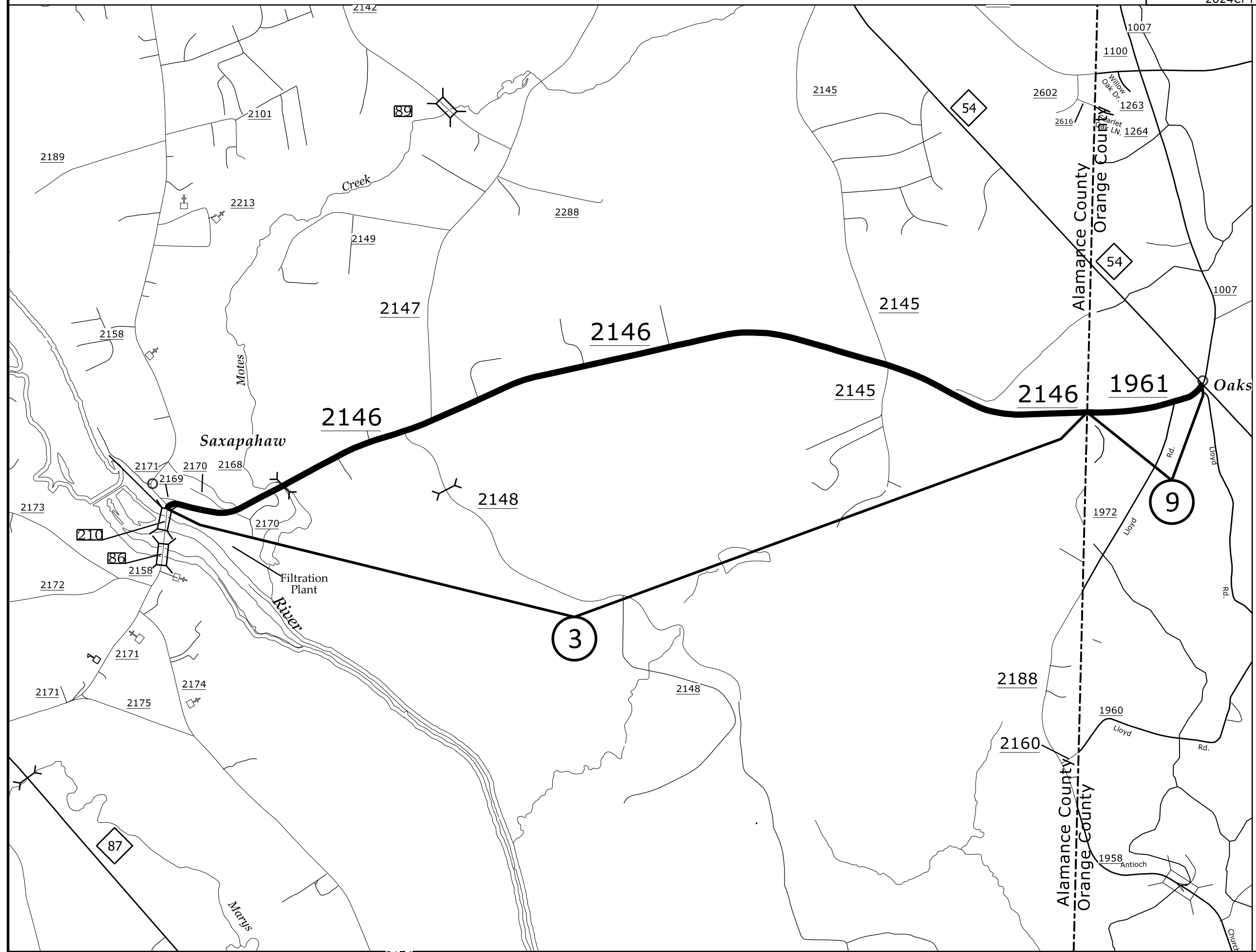
Map 1
 SR 1552 Barber Road
 #78 Mat Seal
 1½" S9.5 B

ALAMANCE COUNTY
ORANGE COUNTY
 NORTH CAROLINA



Map 2
 SR 1151 Troxler Road
 #78 Mat Seal
 1½" S9.5 B

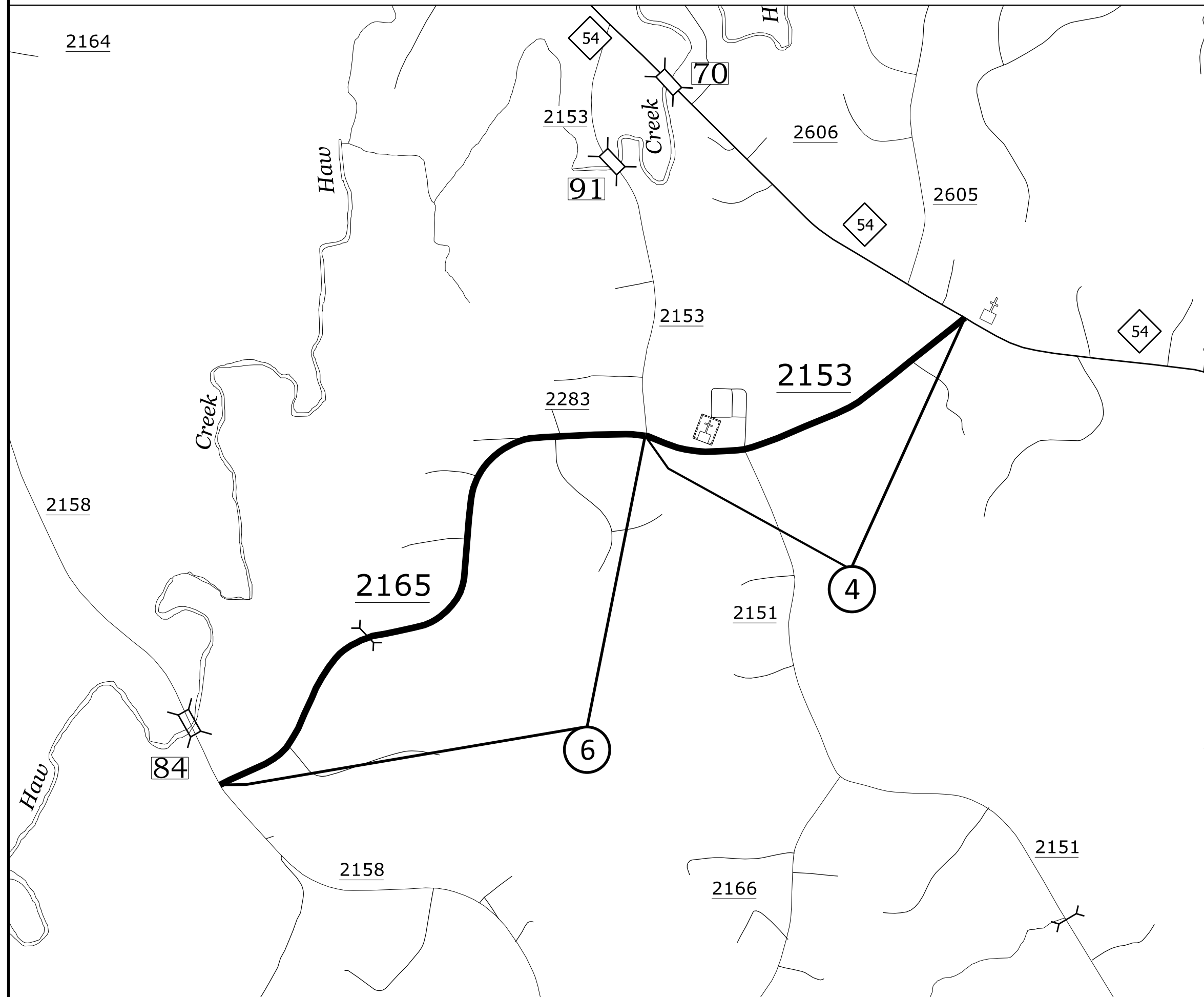
ALAMANCE COUNTY
ORANGE COUNTY
 NORTH CAROLINA



Map 3
 SR 2146 Saxapahaw
 Bethlehem Ch. Rd.
 #78 Mat Seal 1½" S9.5 B
 Mill around island at Church Rd
 Charge to:
 2024CPT.07.11.20011

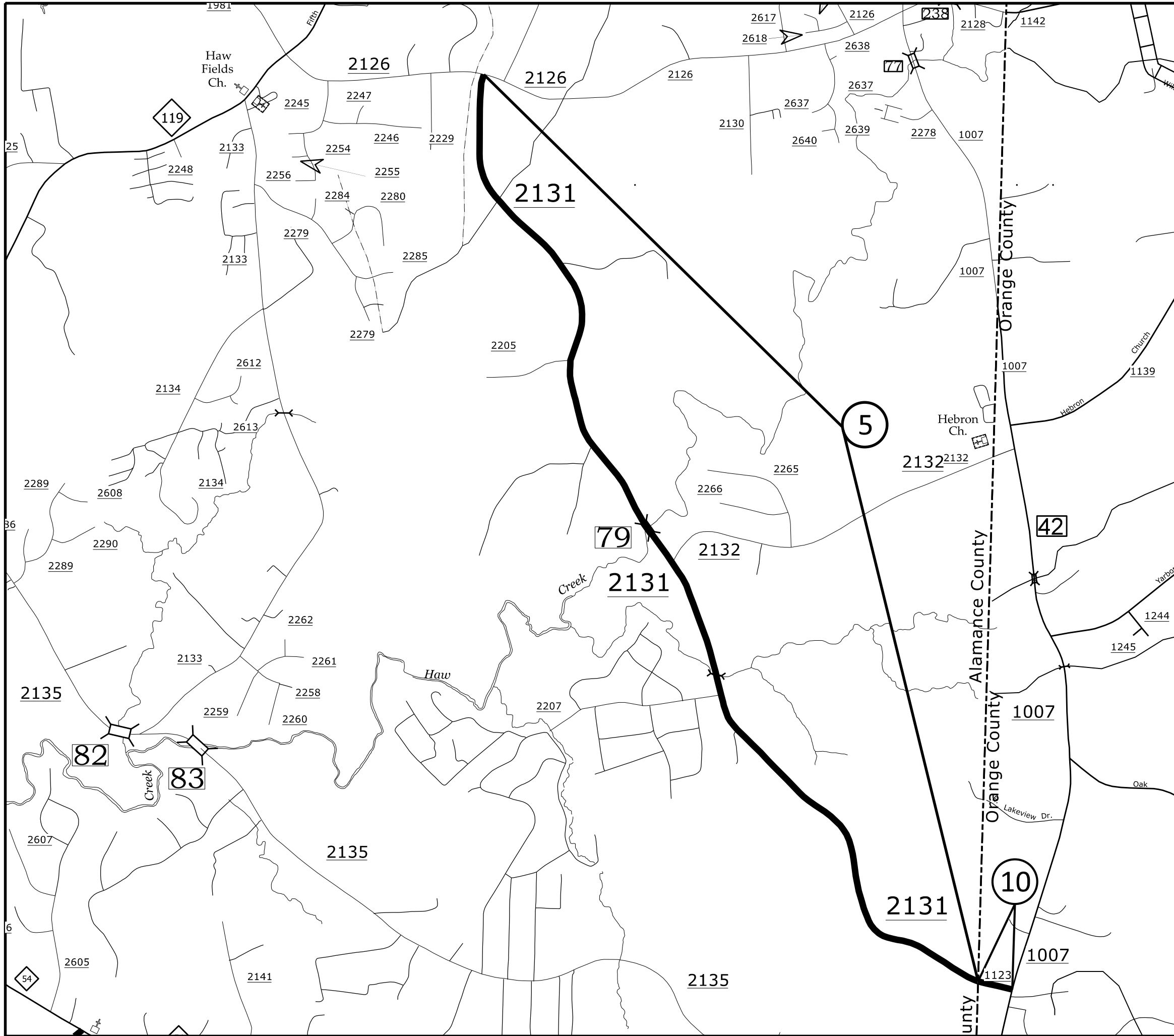
Map 9
 SR 1961 Saxapahaw
 Bethlehem Ch. Rd.
 #78 Mat Seal 1½" S9.5 B
 Mill around island at NC 54
 Charge to:
 2024CPT.07.11.20681

ALAMANCE COUNTY
ORANGE COUNTY
 NORTH CAROLINA



Map 4
 SR 2153 Brucewood Road
 Start Joint at end of Island
 #78 Mat Seal
 1½" S9.5 B

Map 6
 SR 2165 Brucewood Road
 #78 Mat Seal
 1½" S9.5 B



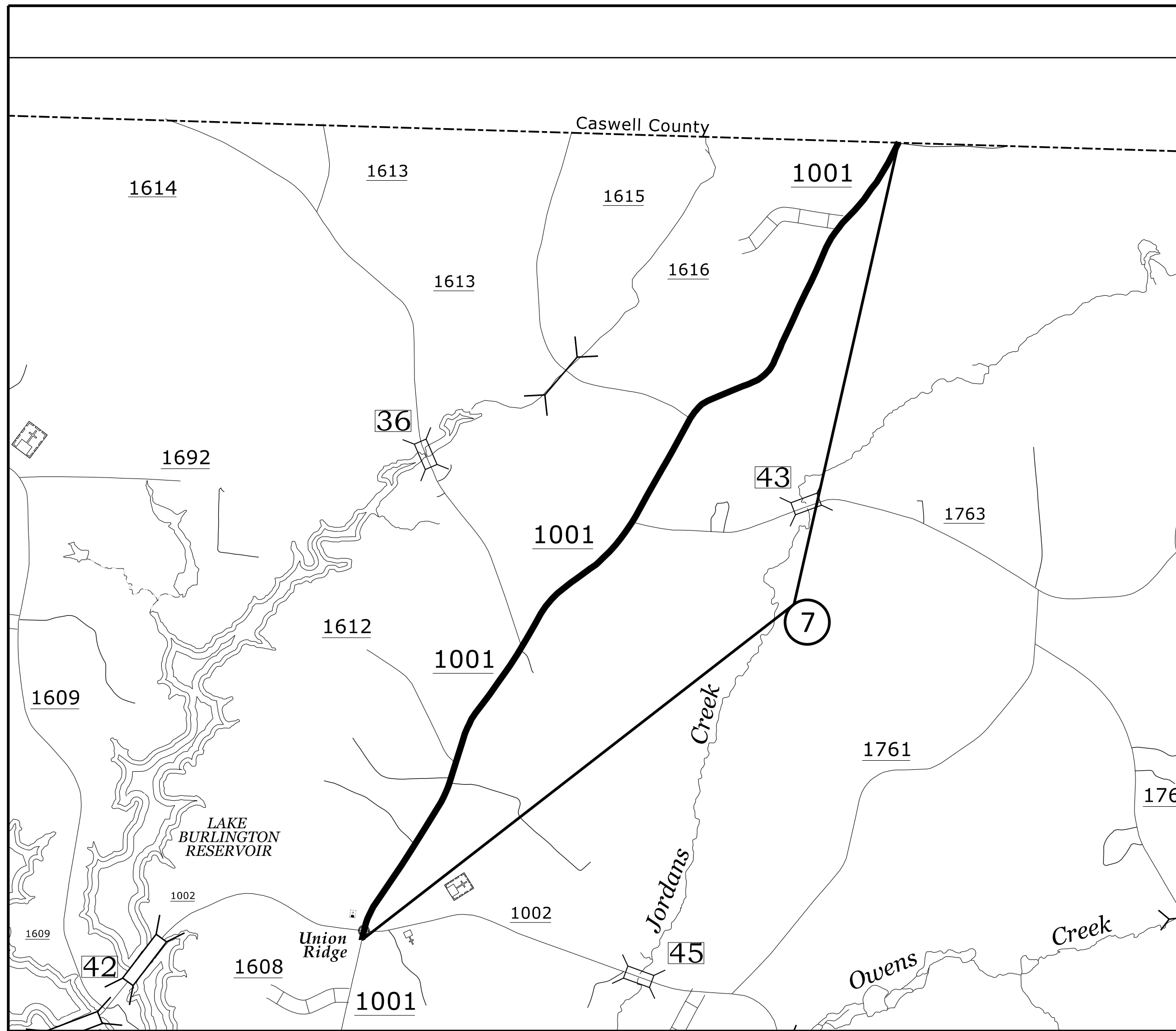
PROJECT REFERENCE NO.	SHEET NO.
2024CPT.07.11.20011	5
2024CPT.07.11.20681	



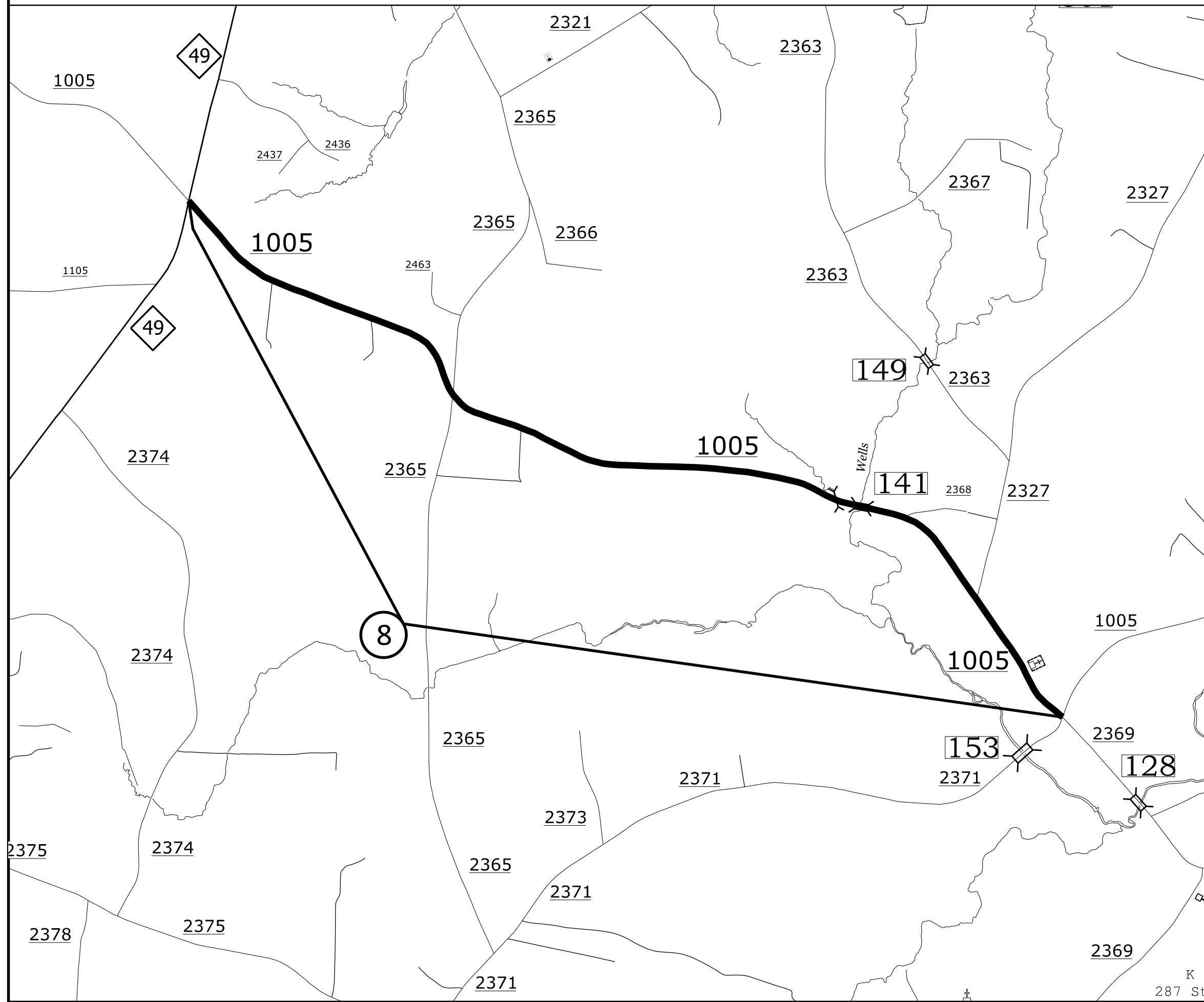
Map 5
 SR 2131 Jones Dr.
 #78 Mat Seal 1½" S9.5 B
 Bridge# 79 Resurface

Map 10
 SR 1123 Jones Road
 #78 Mat Seal 1½" S9.5 B
 Charge to 2024CPT.07.11.20681

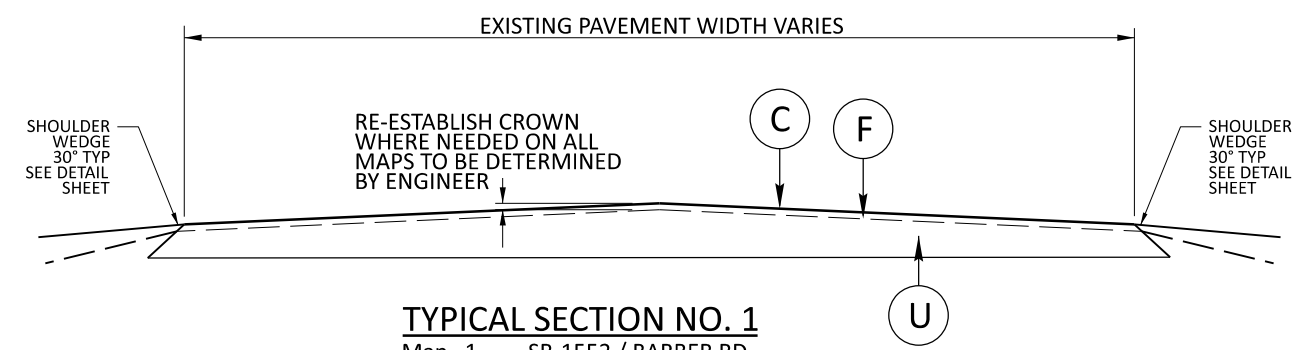
ALAMANCE COUNTY
ORANGE COUNTY
 NORTH CAROLINA



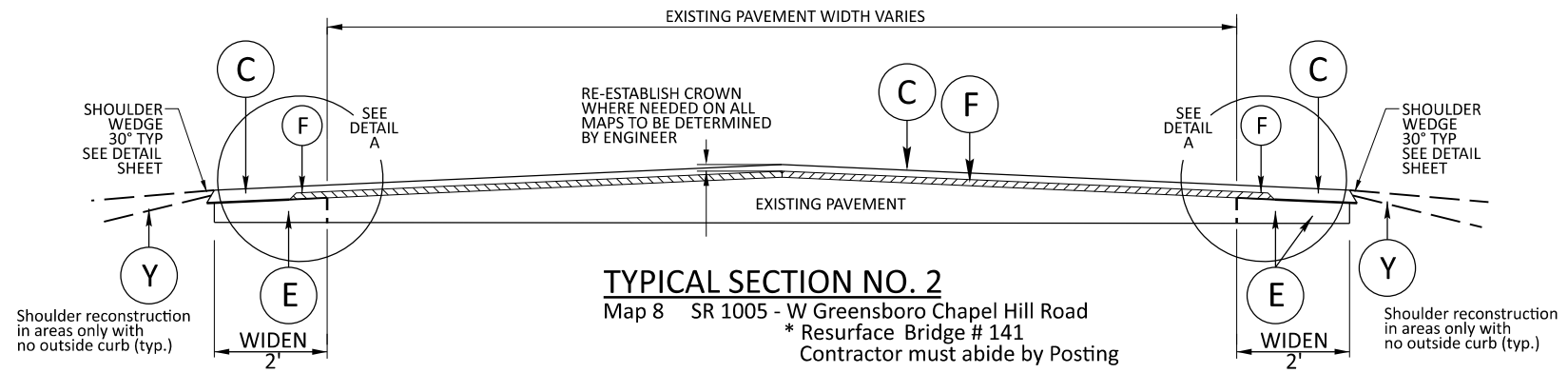
Map 7
 SR 1001 Union Ridge Rd.
 #78 Mat Seal 1½" S9.5 B



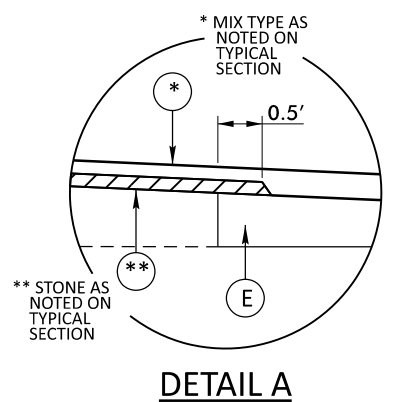
Map 8
 SR 1005 Greensboro Chapel Hill Rd.
 Widen 2 feet
 8" B 25.0C
 #78 Mat Seal
 1½" S9.5 B
 Bridge # 141 Resurface
 Contractor must abide by Posting



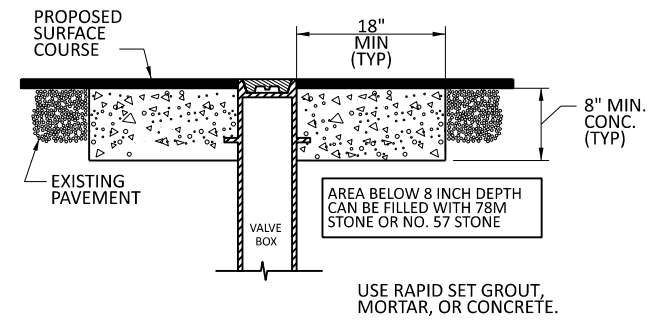
- TYPICAL SECTION NO. 1**
- Map 1 SR-1552 / BARBER RD
 - Map 2 SR-1151 / TROXLER RD
 - Map 3 SR-2146 / SAXAPAHAW BETHLEHEM CHURCH RD
 - Map 4 SR-2153 / BRUCEWOOD RD
 - Map 5 SR-2131 / JONES DR
 - Bridge# 79 Resurface
 - Map 6 SR-2165 / BRUCEWOOD RD
 - Map 7 SR-1001 / UNION RIDGE RD
 - Map 9 SR-1961 / SAXAPAHAW BETHLEHEM CHURCH RD
 - Charge to: Orange County 2024CPT.07.11.20681
 - Map 10 SR-1123 / JONES RD
 - Charge to: Orange County 2024CPT.07.11.20681



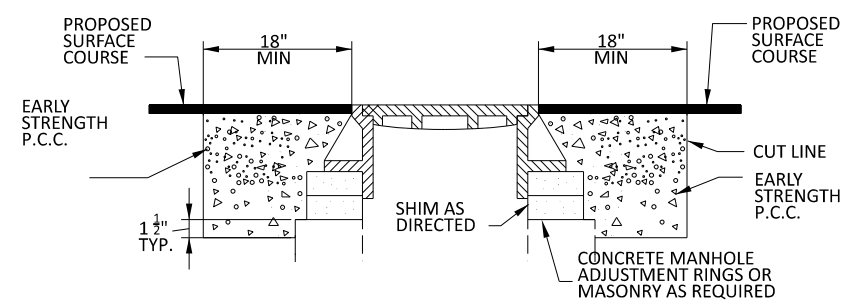
- TYPICAL SECTION NO. 2**
- Map 8 SR 1005 - W Greensboro Chapel Hill Road
 - * Resurface Bridge # 141
 - Contractor must abide by Posting



PAVEMENT SCHEDULE	
C	PROP. APPROX. 1½" ASPHALT CONCRETE SURFACE COURSE, TYPE S9.5B, TO BE APPLIED AT AN AVERAGE RATE OF 165 LBS PER SQ YD.
E	PROP. APPROX. 8" ASPHALT CONCRETE BASE COURSE, TYPE B25.0C, AT AN AVERAGE RATE OF 456 LBS. PER SQ. YD. IN EACH OF TWO LAYERS.
F	AST MAT COAT, #78M
U	EXISTING PAVEMENT
Y	SHOULDER RECONSTRUCTION (SEE DETAIL)

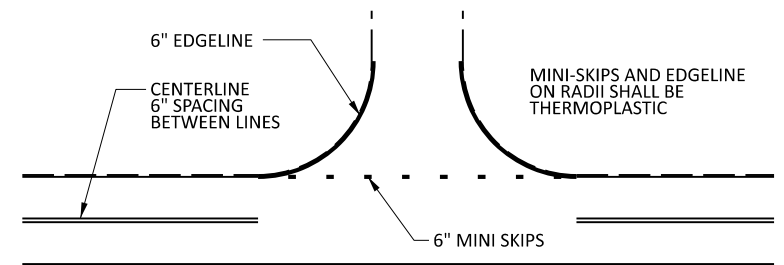


STANDARD CONCRETE ENCASEMENT FOR VALVE CASTINGS IN PAVEMENT



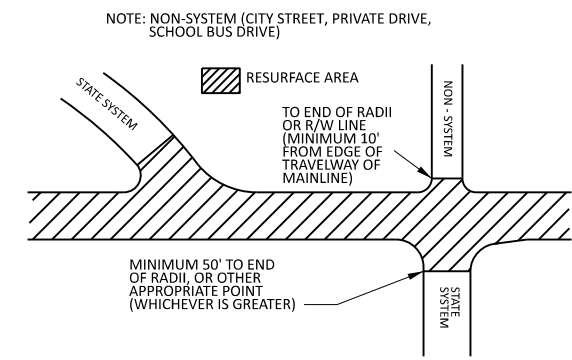
- NOTES:
1. MORTAR SHALL BE MIXED TO NCDOT SPECIFICATIONS.
 2. ALL FAULTY EXISTING BRICKWORK TO BE REMOVED AND REPLACED WITH NEW BRICK MASONRY.
 3. EXCAVATION FOR THE ADJUSTMENT SHALL BE SHEER CUT ON ALL SIDES.
 4. RAPID SET GROUT, MORTAR, OR CONCRETE SHALL BE USED CLASS B CONCRETE MAY BE USED WHEN ADJUSTMENTS ARE NOT IN THE TRAVEL LANE.

STANDARD CONCRETE ENCASEMENT FOR MANHOLE CASTINGS IN PAVEMENT

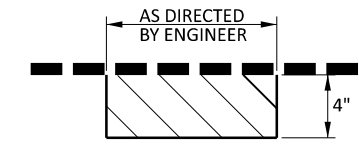


NOTE: MINI SKIPS SHALL BE PLACED ON A 8' CYCLE, CONTAINING A 6' AND 2' SKIP, THE WIDTH OF THE SKIP SHALL BE 6'.

TO BE USED AT ALL NON-SIGNALIZED INTERSECTIONS (NOT TO SCALE)

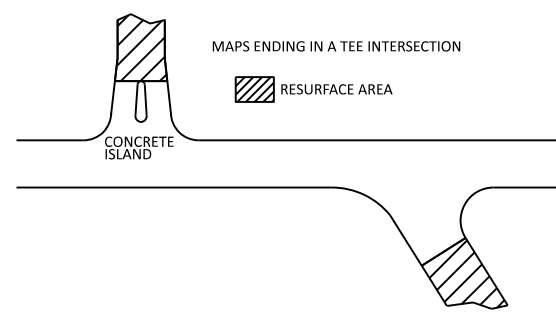


PAVING DETAIL 1 MAIN LINE IS BEING RESURFACED

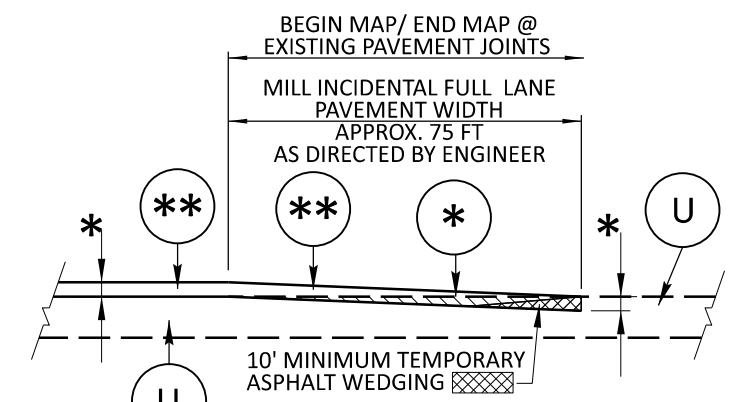


MILL FILL WITH INTERMEDIATE COURSE, TYPE 119.0C AT LOCATIONS AS DIRECTED BY THE ENGINEER.

PATCHING EXISTING PAVEMENT DETAIL

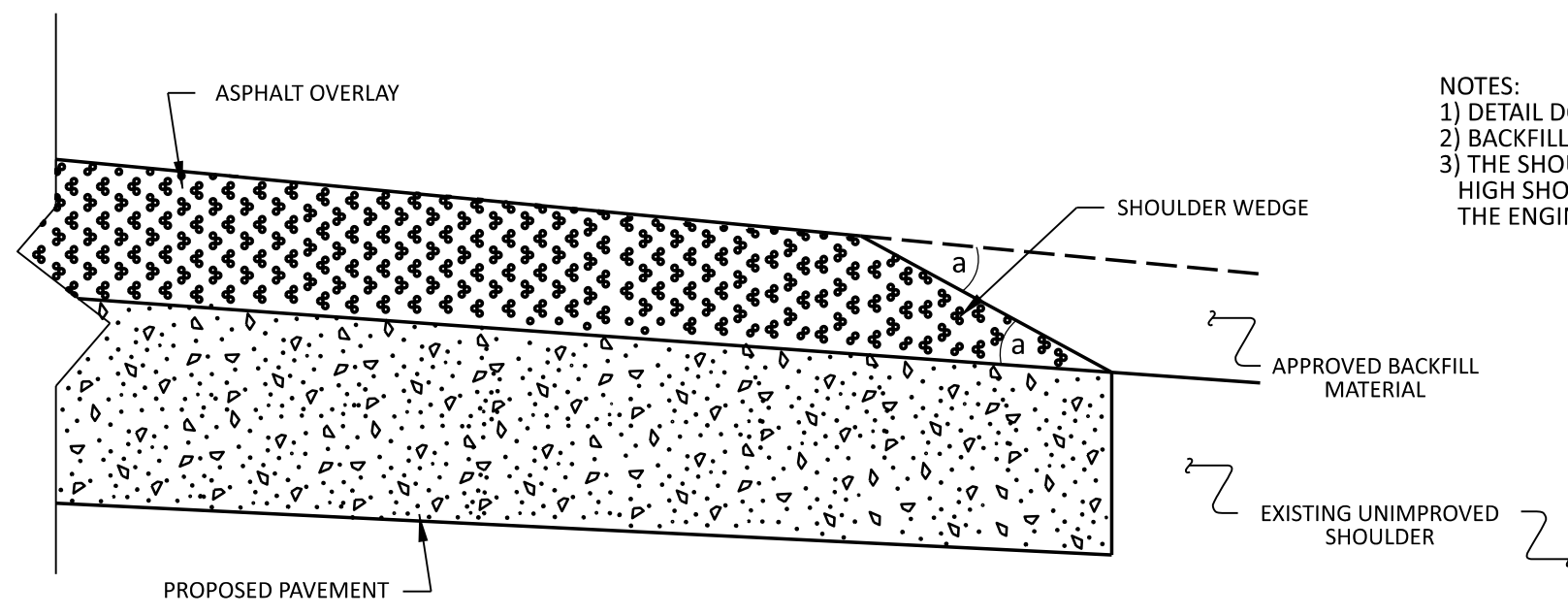


PAVING DETAIL 2 MAIN LINE NOT BEING RESURFACED



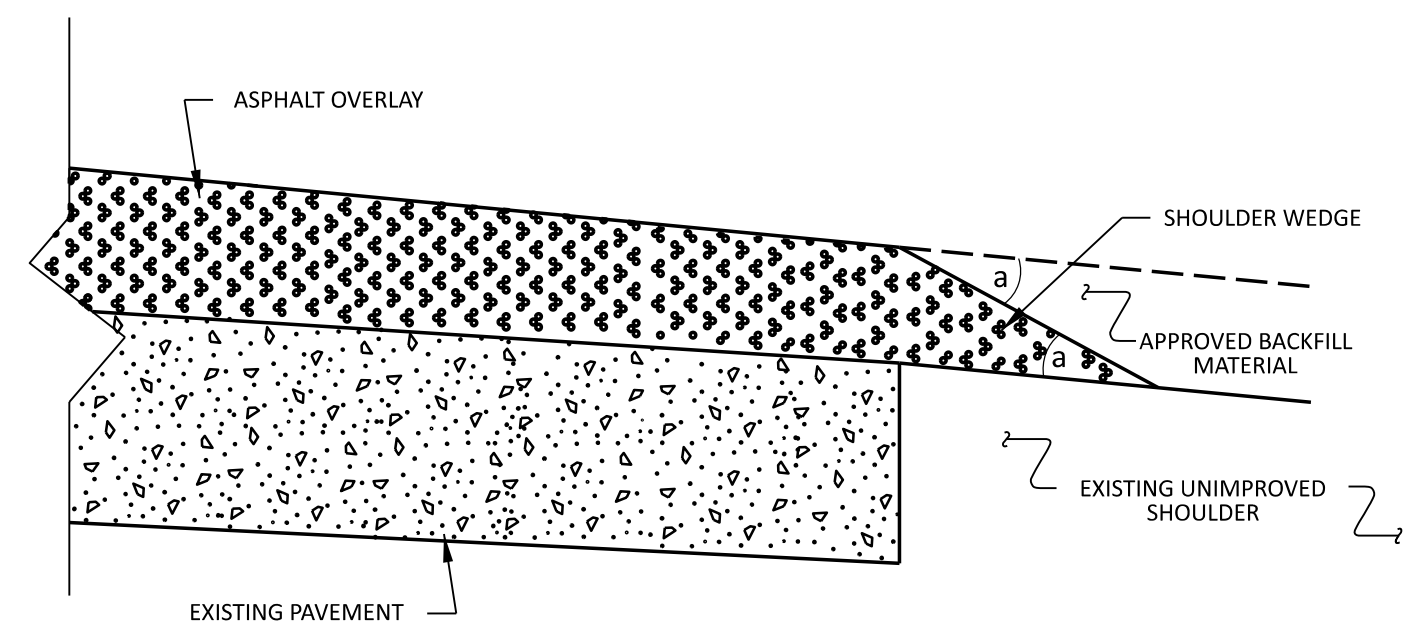
INCIDENTAL MILLING AT TIE-IN DETAIL

PAVEMENT SCHEDULE	
C	PROP. APPROX. 1 1/2" ASPHALT CONCRETE SURFACE COURSE, TYPE S9.5B, TO BE APPLIED AT AN AVERAGE RATE OF 165 LBS PER SQ YD.
E	PROP. APPROX. 8" ASPHALT CONCRETE BASE COURSE, TYPE B25.0C, AT AN AVERAGE RATE OF 456 LBS. PER SQ. YD. IN EACH OF TWO LAYERS.
F	AST MAT COAT, #78M
U	EXISTING PAVEMENT
Y	SHOULDER RECONSTRUCTION (SEE DETAIL)

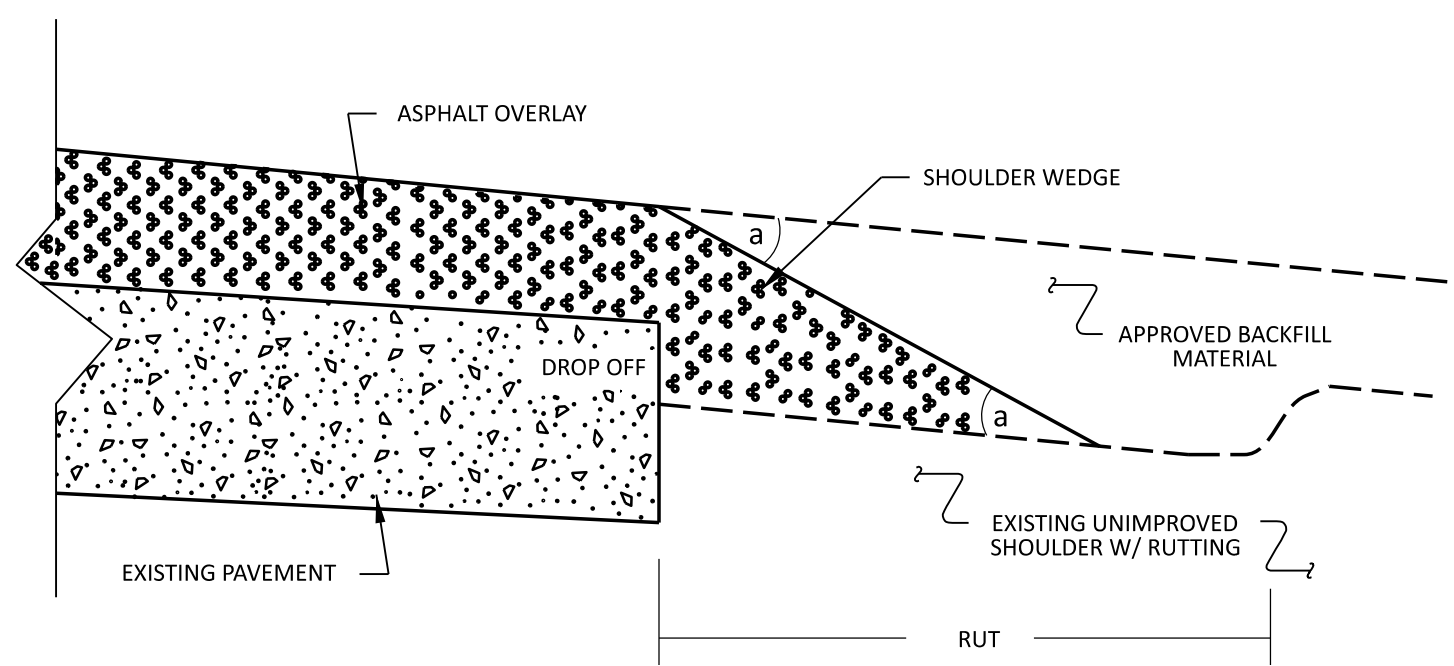


NOTES:
 1) DETAIL DOES NOT APPLY TO OGAFC AND ULTRA-THIN BONDED WEARING COURSE.
 2) BACKFILL SHOULDER WITH APPROVED MATERIAL.
 3) THE SHOULDER WEDGE DEVICE MAY BE DISENGAGED AT PAVED DRIVEWAYS AND SIDE STREETS, HIGH SHOULDERS, AND OTHER LOCATIONS NOT FEASIBLE TO CONSTRUCT AS DIRECTED BY THE ENGINEER.

SHOULDER WEDGE DETAIL
 (Resurfacing Projects w/ Widening or with Existing Paved Shoulder having no dropoffs)



SHOULDER WEDGE DETAIL
 (Resurfacing Projects w/ NO Widening)



SHOULDER WEDGE DETAIL
 (Resurfacing Adjacent to Rutted Shoulder)

- SHOULDER WEDGE ANGLE = 30°

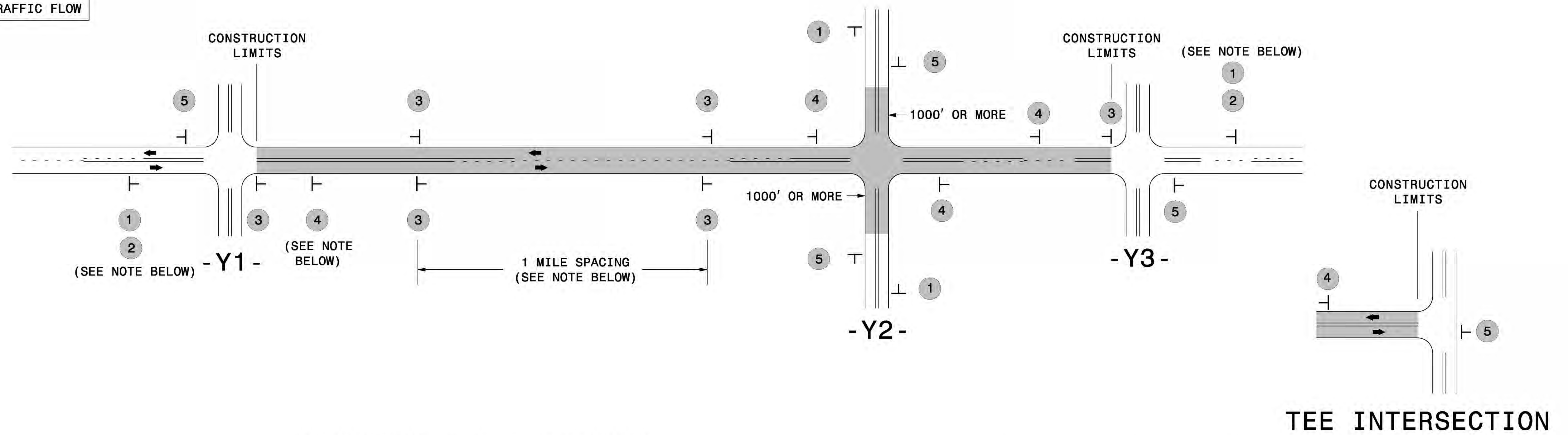
CONTRACT STANDARDS AND DEVELOPMENT UNIT	
Office 919-707-6950	FAX 919-250-4119
SHOULDER WEDGE DETAILS	
ORIGINAL BY: T.SPELL	DATE: 7-19-11
MODIFIED BY:	DATE: 10/16/12
CHECKED BY:	DATE:
FILE SPEC.:	susr/details/stand/shoulderwedgedetail.dgn

SIGNING FOR RESURFACING PROJECTS

LEGEND

┃ STATIONARY SIGN

← DIRECTION OF TRAFFIC FLOW



MAINLINE (-L-) SIGNING

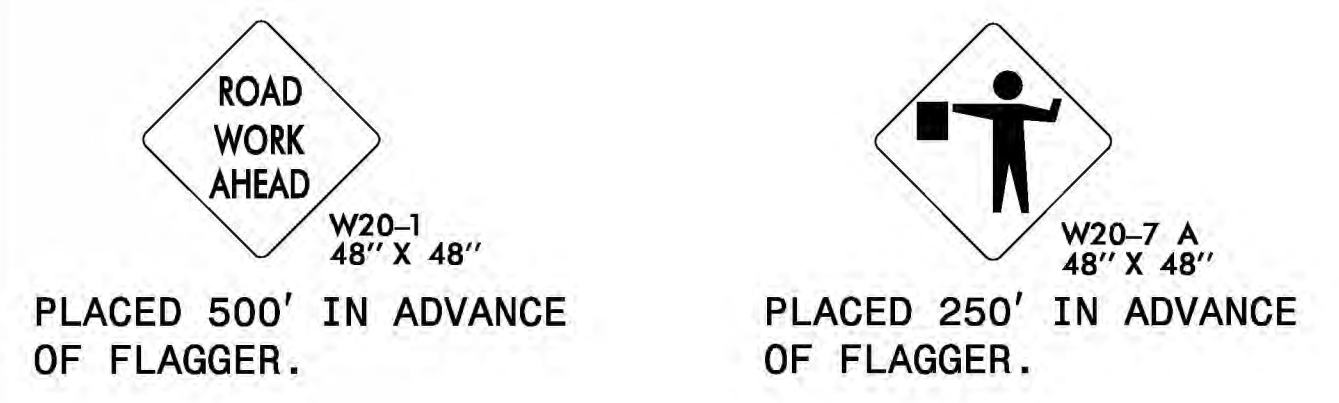
-Y- LINE SIGNING

SIGNING NOTES AND PLACEMENT PER DIRECTION	1	 <small>W20-1 48" X 48"</small>	PLACE 1000' PRIOR TO BEGINNING OF CONSTRUCTION LIMITS. ONLY USED ON -Y- LINES IF RESURFACING LIMITS EXTEND 1000' ALONG -Y- LINE.	
	2	 <small>W7-3aP 24" X 18"</small>	#2 SIGN ONLY USED WHEN CONSTRUCTION LIMITS ARE 2 OR MORE MILES IN LENGTH. ROUND UP TO NEXT WHOLE NUMBER. (NO FRACTIONAL OR DECIMAL NUMBERS)	
	3	 <small>SP 13107 48" X 48"</small>	- PLACE INITIALLY AT THE CONSTRUCTION LIMITS AND SPACE 1 MILE APART THEREAFTER. - AT TEE INTERSECTIONS INSTALL INITIALLY 1/2 MILE FROM INTERSECTION AND SPACE 1 MILE APART THEREAFTER.	
	4	 <small>SP 13106 48" X 48"</small>	- THESE ARE FOR -Y- LINES THAT ARE "THROUGH" ROADWAYS. - DEAD END AND SUBDIVISION ROADS ARE NOT "THROUGH" ROADWAYS. - INSTALL 500' +/- FROM EACH -Y- LINE APPROACH AS SHOWN ABOVE. - FOR MULTIPLE -Y- LINES THAT ARE SEPARATED BY 0.25 MILES OR LESS, TREAT AS A SINGLE UNIT AND INSTALL WITHIN 500' OF EACH APPROACH. - A MAXIMUM OF 2 SIGN SETS PER MILE. DO NOT INSTALL WHEN -Y- LINES ARE WITHIN 0.5 MILES FROM "END ROAD WORK" SIGN. - FOR TEE INTERSECTIONS, INSTALL WITHIN 500' +/- OF THE INTERSECTION ALONG -L- LINE.	
	5	 <small>G20-2 A 48" X 24"</small>	PLACE 500' FOLLOWING THE END OF CONSTRUCTION LIMITS OR AS SHOWN WHEN WORK ENDS AT A 3-WAY TEE INTERSECTION.	

NO REQUIRED STATIONARY SIGNING FOR THE FOLLOWING -Y- LINE CONDITIONS:

- 1) LESS THAN 1000' OF RESURFACING ALONG -Y- LINE
- 2) SUBDIVISION ROADS
- 3) DEAD END ROADS

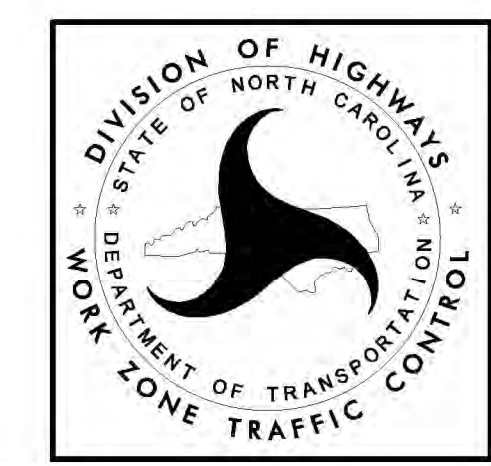
WHEN PAVING/CONSTRUCTION ACTIVITIES PROCEED ACROSS AN UNSIGNED -Y- LINE, PORTABLE ADVANCE WARNING SIGNS SHALL BE USED ALONG THE -Y- LINE AS SHOWN BELOW. REMOVE UPON COMPLETION OF WORK.



THE ABOVE SIGNS ARE ALL THAT ARE REQUIRED FOR A CONTRACTOR TO BEGIN A RESURFACING CONTRACT. ANY ADDITIONAL SIGNS REQUESTED BY NCDOT DIVISIONS SHALL BE INSTALLED WITHIN 7 BUSINESS DAYS OF THE START OF CONTRACT WORK.

MAPS LESS THAN 2 MILES

FOR RESURFACING MAPS WITH CONSTRUCTION LIMITS LESS THAN 2 MILES IN LENGTH, NO STATIONARY SIGNS ARE REQUIRED. USE PORTABLE "ROAD UNDER CONSTRUCTION" OR "ROAD WORK AHEAD" SIGNS IN LIEU OF STATIONARY ADVANCE WARNINGS SIGNS.

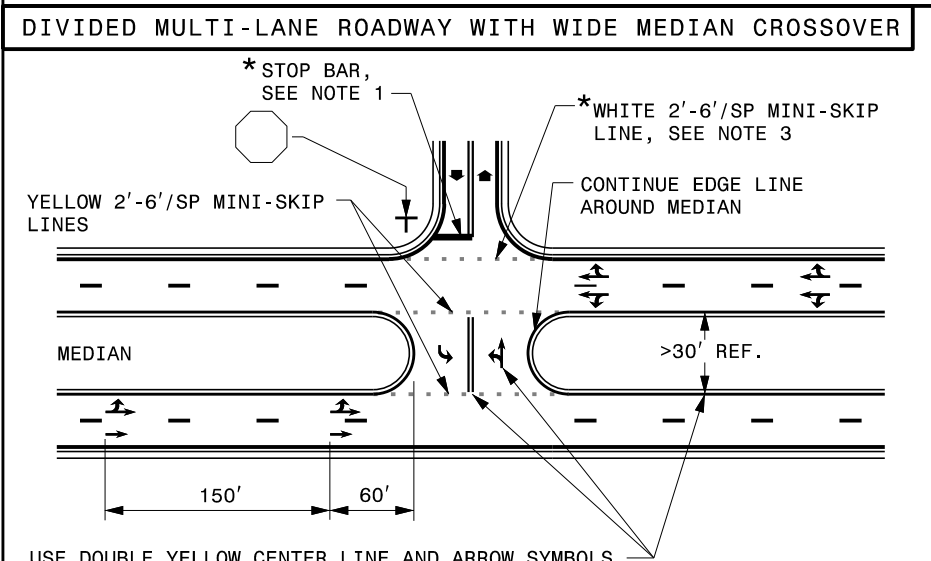
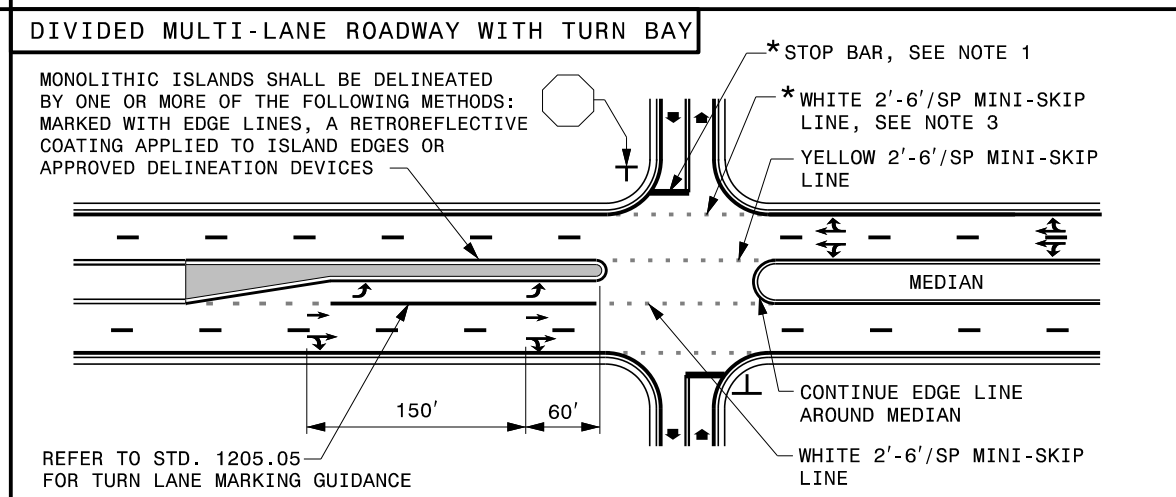
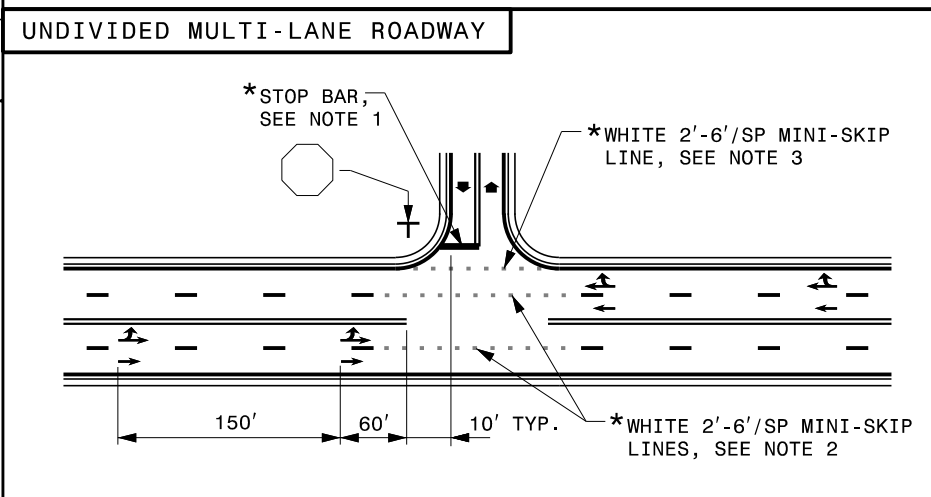
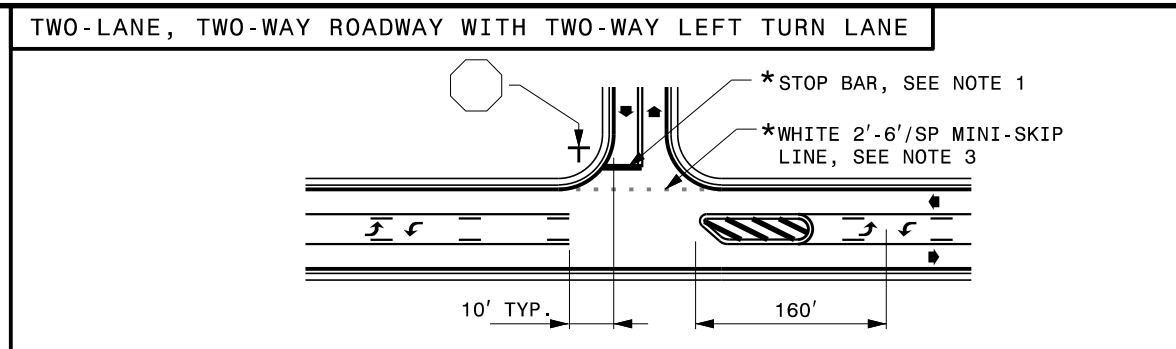
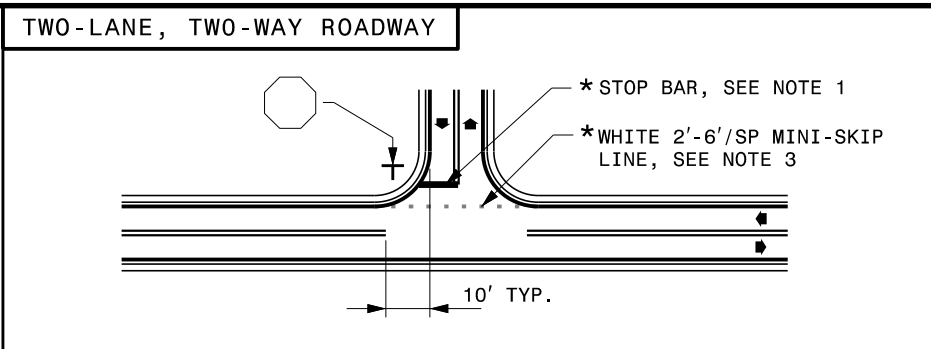


ADVANCE WARNING SIGNS FOR RURAL AND SUBURBAN 2-LANE ROADWAY RESURFACING

5/15/2017 S:\T\M\WZTC\Resurfacing\2L2W & AST Resurfacing Details\Resurfacing_AdvWarn_2Ln.dgn User:keads



STATE OF NORTH CAROLINA DEPT. OF TRANSPORTATION DIVISION OF HIGHWAYS RALEIGH, N.C. ENGLISH DETAIL DRAWING FOR PAVEMENT MARKINGS INTERSECTIONS SHEET 2 OF 2 1205D04



GENERAL NOTES: 1- PLACEMENT OF STOP BARS AT NON-SIGNALIZED INTERSECTIONS IS OPTIONAL... 2- MINI-SKIP LANE LINE EXTENSIONS SHOULD BE USED AT INTERSECTIONS THAT HAVE REDUCED VISIBILITY... 3- MINI-SKIP EDGE LINE EXTENSIONS MAY BE PLACED THROUGH INTERSECTIONS AND MAJOR DRIVEWAYS... 4- REFER TO ROADWAY STANDARD DRAWINGS 1205.01, 1205.02, 1205.05, 1205.08 AND 1205.09 FOR ADDITIONAL PAVEMENT MARKING GUIDANCE.

LEGEND table with symbols for STOP SIGN, STATIONARY SIGN, DIRECTION OF TRAFFIC FLOW, PAVEMENT MARKING SYMBOLS, and OPTIONAL.

USE DOUBLE YELLOW CENTER LINE AND ARROW SYMBOLS IN MEDIAN CROSSOVER WHEN WIDTH OF MEDIAN EXCEEDS 30 FT, OTHERWISE THEY ARE NOT REQUIRED.

STATE OF NORTH CAROLINA DEPT. OF TRANSPORTATION DIVISION OF HIGHWAYS RALEIGH, N.C. ENGLISH DETAIL DRAWING FOR PAVEMENT MARKINGS INTERSECTIONS SHEET 2 OF 2 1205D04

REVISED PAVEMENT MARKING ROADWAY STANDARD DRAWING

U:\8\13\17\Standards Group\Standards and Drawings\Drawings\2018 Standard Dwg\Division 12 Final\2050402_08-13-19.dgn User:dstokes