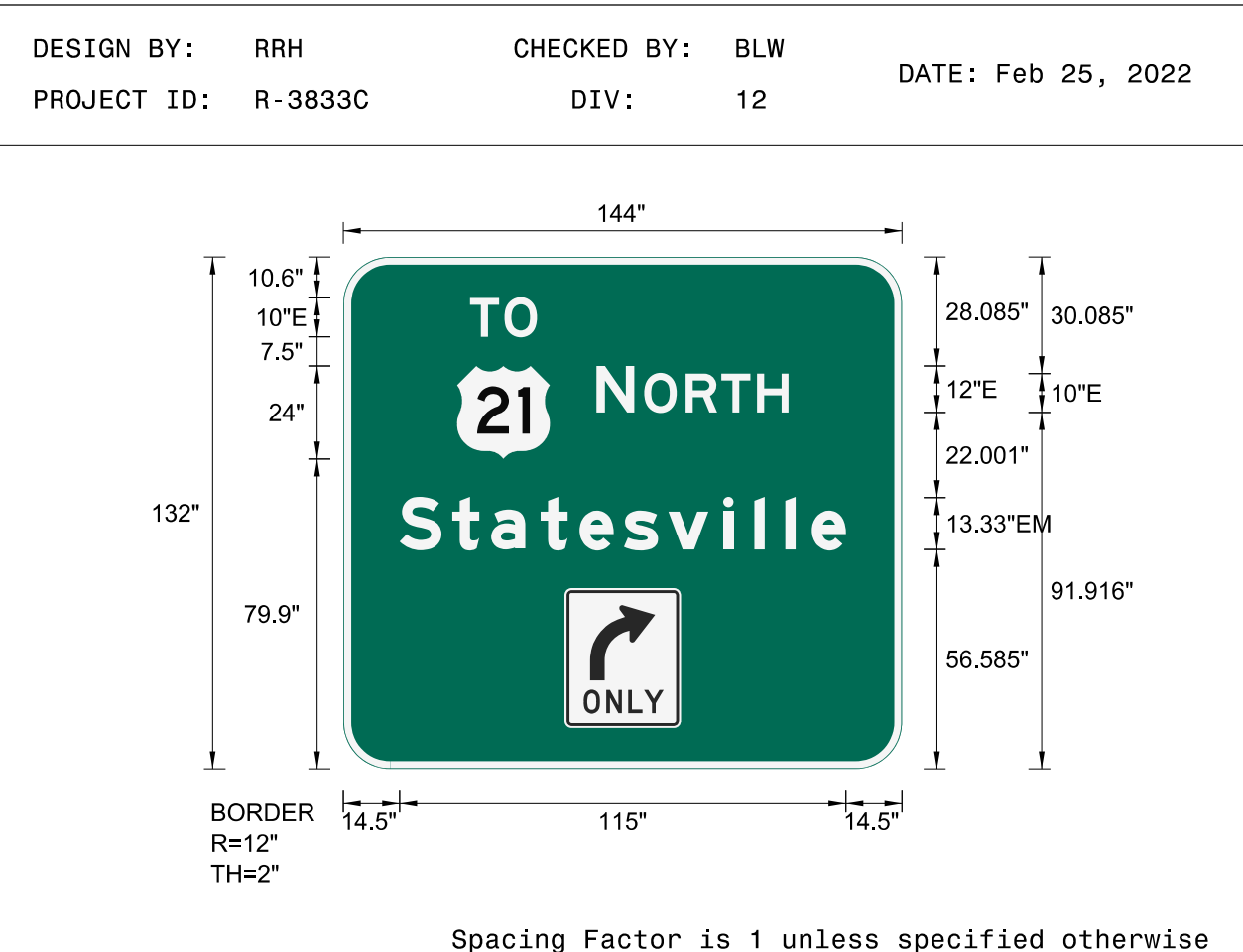


SIGN NUMBER: 1
 TYPE: A
 QUANTITY: 1
 SIGN WIDTH: 144"
 HEIGHT: 132"
 TOTAL AREA: 132.0 Sq.Ft.
 BORDER TYPE: FLUSH
 RADII: 12"
 WIDTH: 2"
 RECESS: 0"
 NO. Z BARS: 3
 LENGTH: 136.0

BACKG COLOR: Green
 COPY COLOR: White

SYMBOL	X	Y	WID	HT
M1_4	29.3	79.9	24	24
R3-5R	57	10.6	30	36

MAT'L: 0.125" (3.2MM) ALUMINUM



- USE NOTES
- Legend and border (except those that are colored black) shall be direct applied Grade A sheeting.
 - Background shall be Grade C reflective sheeting.
 - Shields; A, B, and C type arrows shall be on 0.032" (0.8mm) aluminum and demountable.
 - R3-5R shall be white Grade A reflective sheeting on 0.032" aluminum and demountable. Legend, border, and arrow shall be direct applied black non-reflective sheeting.

LETTER POSITIONS

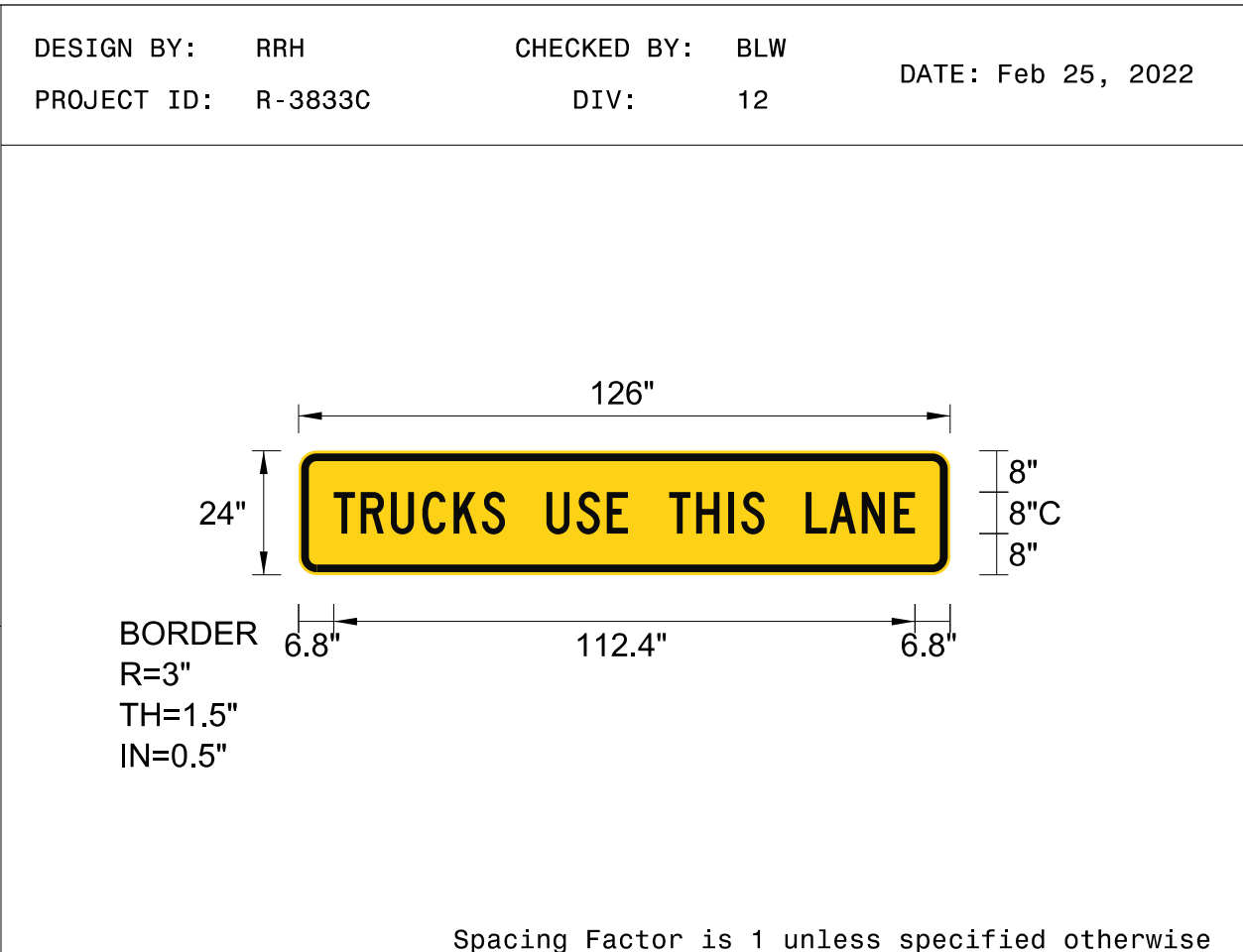
Letter spacings are to start of next letter													Series/Size Text Length
T	O												E 2000
32.6	8.9	8.4	94.1										17.3
N	O	R	T	H									E 2000
65.3	9.7	2.6	10.7	9.2	9.2	8.1	29.3						49.5
S	t	a	t	e	s	v	i	l	l	e			EM 2000
14.5	13.6	10	12.8	10	11.5	11.5	14.1	8	8	6.8	8.8	14.5	115

SIGN NUMBER: 2A,3A
 TYPE: B
 QUANTITY: 2
 SIGN WIDTH: 126"
 HEIGHT: 24"
 TOTAL AREA: 21.0 Sq.Ft.
 BORDER TYPE: RECESSED
 RADII: 3"
 WIDTH: 1.5"
 RECESS: 0.5"
 NO. Z BARS: 2
 LENGTH: 118.0

BACKG COLOR: Yellow
 COPY COLOR: Black

SYMBOL	X	Y	WID	HT

MAT'L: 0.125" (3.2MM) ALUMINUM



- USE NOTES
- Legend and border shall be direct applied black non-reflective sheeting.
 - Background shall be Grade C reflective sheeting.

LETTER POSITIONS

Letter spacings are to start of next letter													Series/Size Text Length
T	R	U	C	K	S	U	S	E	T	H	I	S	C 2000
6.8	5.2	5.8	6.1	6.1	5.4	4.5	8	5.8	5.8	4.1	8	5.2	112.4
6.2	2.5	4.5	8	4.6	6.2	6.2	4.1	6.8					

TIP NO. R-3833C SHEET NO. SIGN-3

APPROVED: *Betsy L. Watson*
REGISTERED PROFESSIONAL ENGINEER
29449

DATE: 4/28/2023

SEAL

**DOCUMENT NOT CONSIDERED FINAL
 UNLESS ALL SIGNATURES COMPLETED**

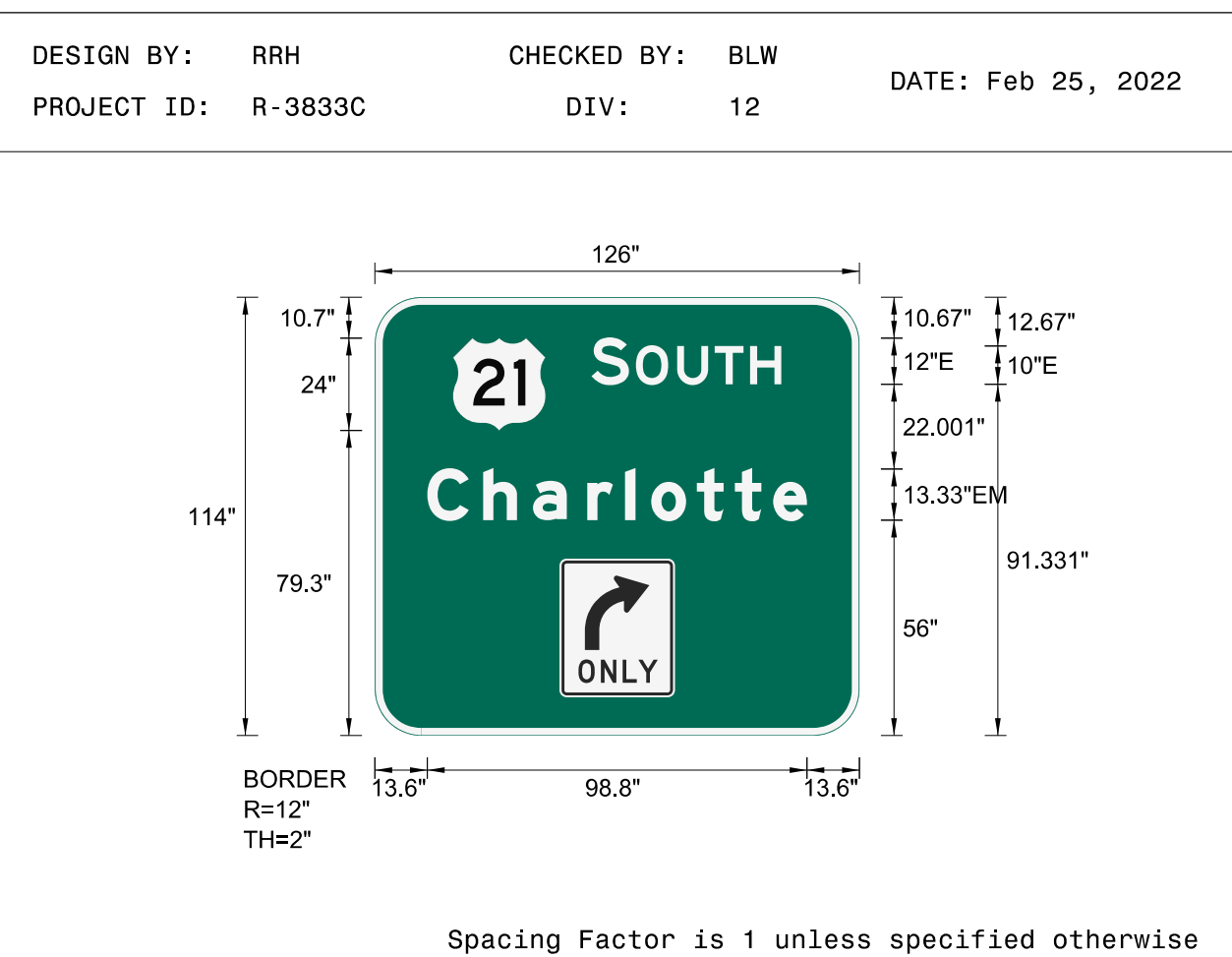


SIGN NUMBER: 2B
 TYPE: A
 QUANTITY: 1
 SIGN WIDTH: 126"
 HEIGHT: 114"
 TOTAL AREA: 99.8 Sq.Ft.
 BORDER TYPE: FLUSH
 RADII: 12"
 WIDTH: 2"
 RECESS: 0"
 NO. Z BARS: 3
 LENGTH: 118.0

BACKG COLOR: Green
 COPY COLOR: White

SYMBOL	X	Y	WID	HT
M1_4	20.3	79.3	24	24
R3-5R	48	10	30	36

MAT'L: 0.125" (3.2MM) ALUMINUM



- USE NOTES
- Legend and border (except those that are colored black) shall be direct applied Grade A sheeting.
 - Background shall be Grade C reflective sheeting.
 - Shields; A, B, and C type arrows shall be on 0.032" (0.8mm) aluminum and demountable.
 - R3-5R shall be white Grade A reflective sheeting on 0.032" aluminum and demountable. Legend, border, and arrow shall be direct applied black non-reflective sheeting.

LETTER POSITIONS

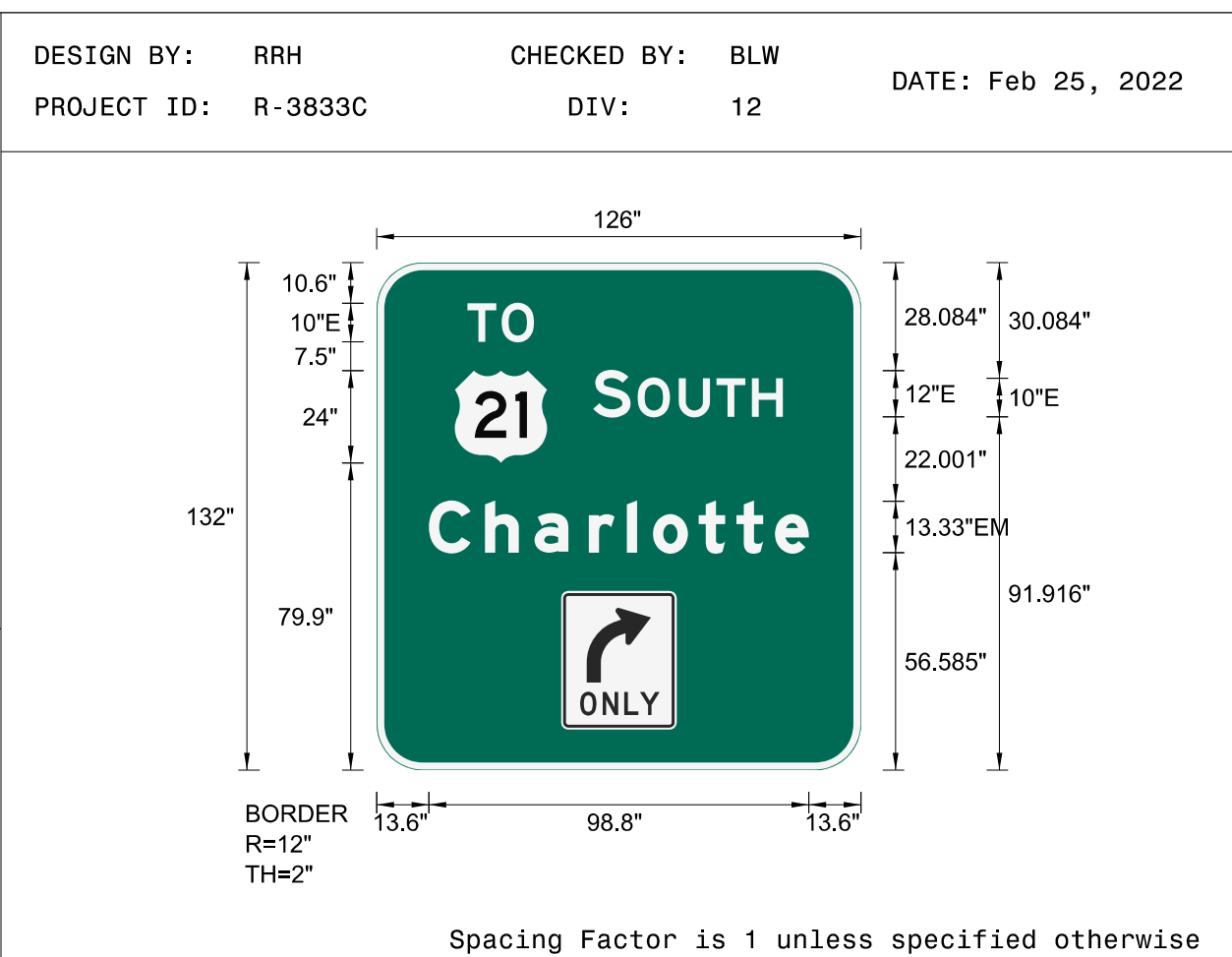
Letter spacings are to start of next letter													Series/Size Text Length
S	O	U	T	H									E 2000
56.3	9.7	1.8	10.7	9.8	9.2	8.1	20.3						49.4
C	h	a	r	l	o	t	t	e					EM 2000
13.6	14.5	12.9	14.1	9.9	6.8	11.9	9.9	10	8.8	13.6			98.8

SIGN NUMBER: 3B
 TYPE: A
 QUANTITY: 1
 SIGN WIDTH: 126"
 HEIGHT: 132"
 TOTAL AREA: 115.5 Sq.Ft.
 BORDER TYPE: FLUSH
 RADII: 12"
 WIDTH: 2"
 RECESS: 0"
 NO. Z BARS: 3
 LENGTH: 118.0

BACKG COLOR: Green
 COPY COLOR: White

SYMBOL	X	Y	WID	HT
M1_4	20.3	79.9	24	24
R3-5R	48	10.6	30	36

MAT'L: 0.125" (3.2MM) ALUMINUM



- USE NOTES
- Legend and border (except those that are colored black) shall be direct applied Grade A sheeting.
 - Background shall be Grade C reflective sheeting.
 - Shields; A, B, and C type arrows shall be on 0.032" (0.8mm) aluminum and demountable.
 - R3-5R shall be white Grade A reflective sheeting on 0.032" aluminum and demountable. Legend, border, and arrow shall be direct applied black non-reflective sheeting.

LETTER POSITIONS

Letter spacings are to start of next letter													Series/Size Text Length
T	O												E 2000
23.6	8.9	8.4	85.1										17.3
S	O	U	T	H									E 2000
56.3	9.7	1.8	10.7	9.8	9.2	8.1	20.3						49.4
C	h	a	r	l	o	t	t	e					EM 2000
13.6	14.5	12.9	14.1	9.9	6.8	11.9	9.9	10	8.8	13.6			98.8

\$\$\$\$SYTIME\$\$\$\$
 \$\$\$DGN\$\$\$\$
 \$\$\$USERNAME\$\$\$\$