

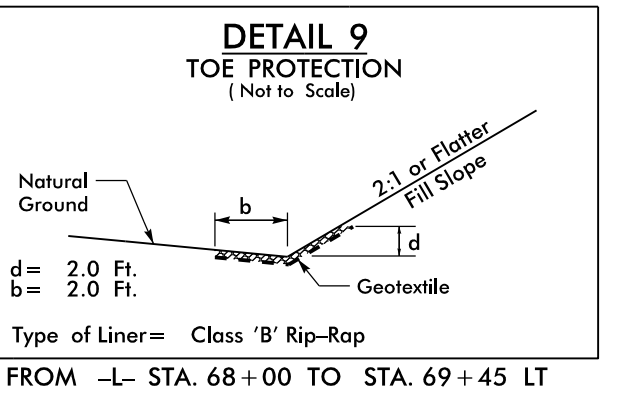
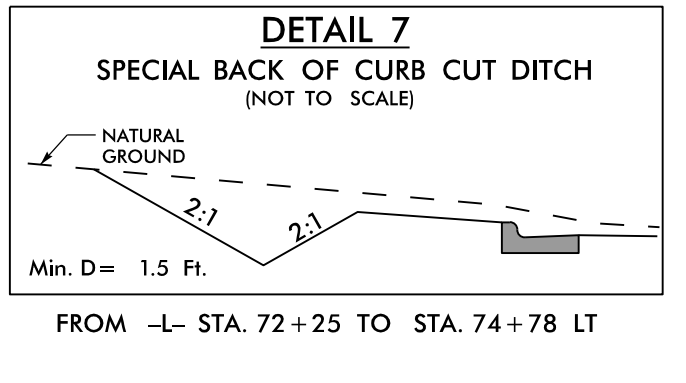
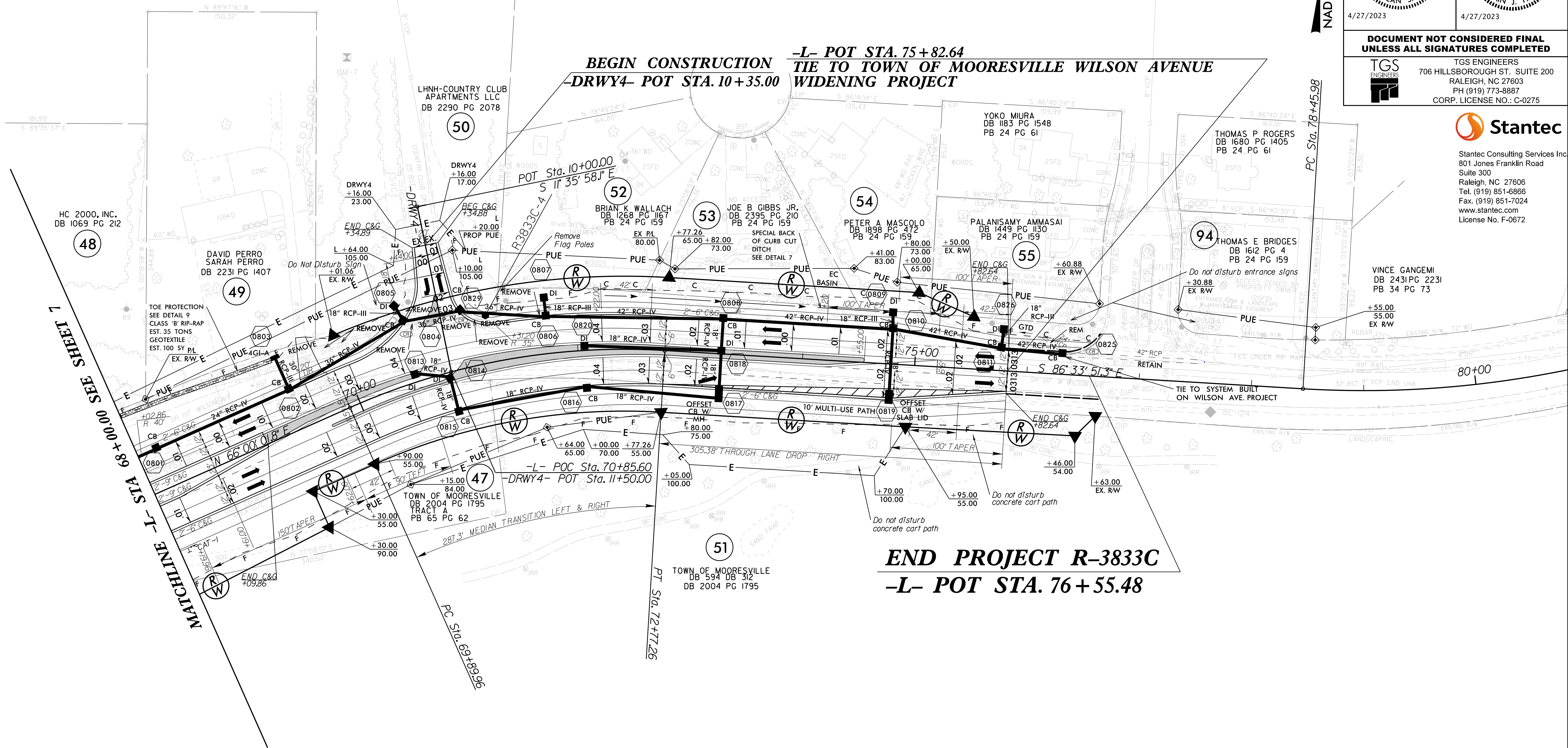
5/14/23

-L-	
PI Sta 71+36.42	PI Sta 79+88.35
$\Delta = 27^{\circ} 26' 06.9''$ (RT)	$\Delta = 17^{\circ} 58' 41.5''$ (LT)
D = 9' 32' 57.5"	D = 6' 21' 58.3"
L = 287.30'	L = 282.40'
T = 146.46'	T = 142.37'
R = 600.00'	R = 900.00'
SE = .04	SE = EXIST
INC = 42'	INC = EXIST

FOR -L- PROFILE SEE SHEET 14
FOR -DRWY4- PROFILE SEE SHEET 19

PROJECT REFERENCE NO. R-3833C	SHEET NO. 08
RW SHEET NO.	
ROADWAY DESIGN ENGINEER Dean Sarvis NORTH CAROLINA PROFESSIONAL ENGINEER 044158 4/27/2023	HYDRAULICS ENGINEER Benjamin J. Hencich NORTH CAROLINA PROFESSIONAL ENGINEER 044158 4/27/2023
DOCUMENT NOT CONSIDERED FINAL UNLESS ALL SIGNATURES COMPLETED	
TGS ENGINEERS 706 HILLSBOROUGH ST., SUITE 200 RALEIGH, NC 27603 PH (919) 773-8887 CORP. LICENSE NO.: C-0275	

Stantec
Stantec Consulting Services Inc.
801 Jones Franklin Road
Suite 300
Raleigh, NC 27606
Tel. (919) 851-6866
Fax. (919) 851-7024
www.stantec.com
License No. F-0672



U:\Projects\3833C\3833C_rdy_psh08.dgn
3/30/2023 10:08:00 AM