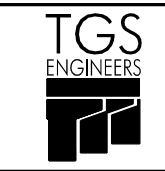



5/14/2023

FOR -L- PROFILE SEE SHEET 12 AND 13
FOR -DRWY2- PROFILE SEE SHEET 19

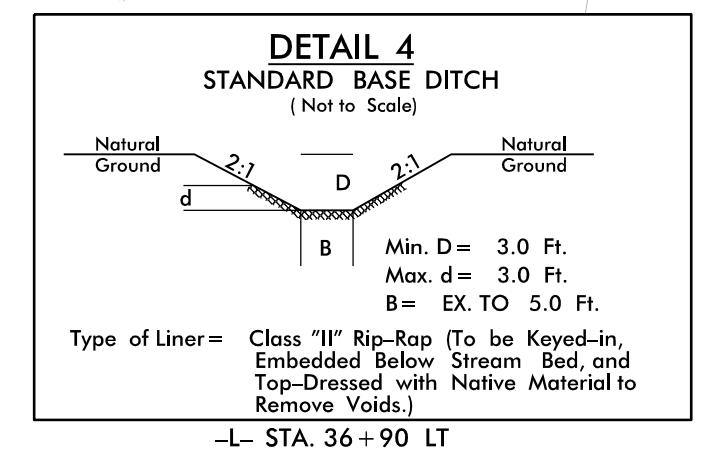
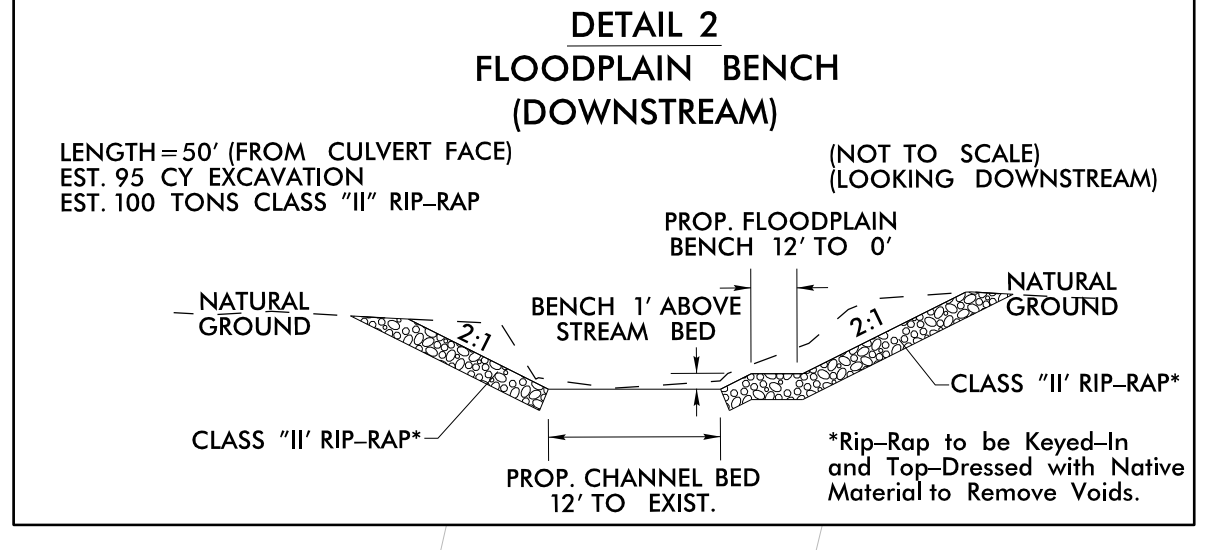
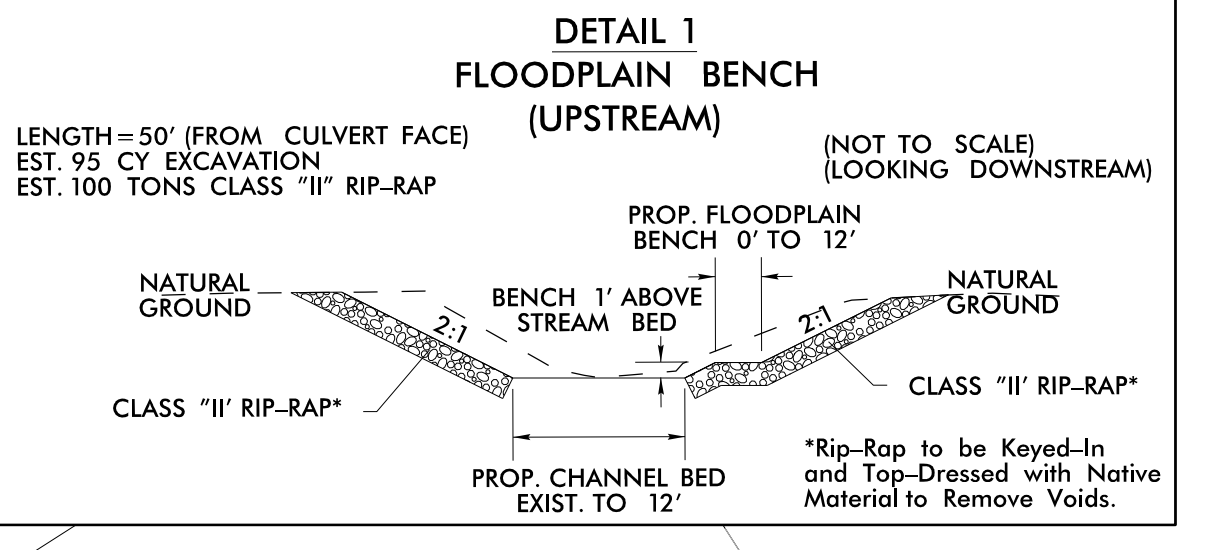
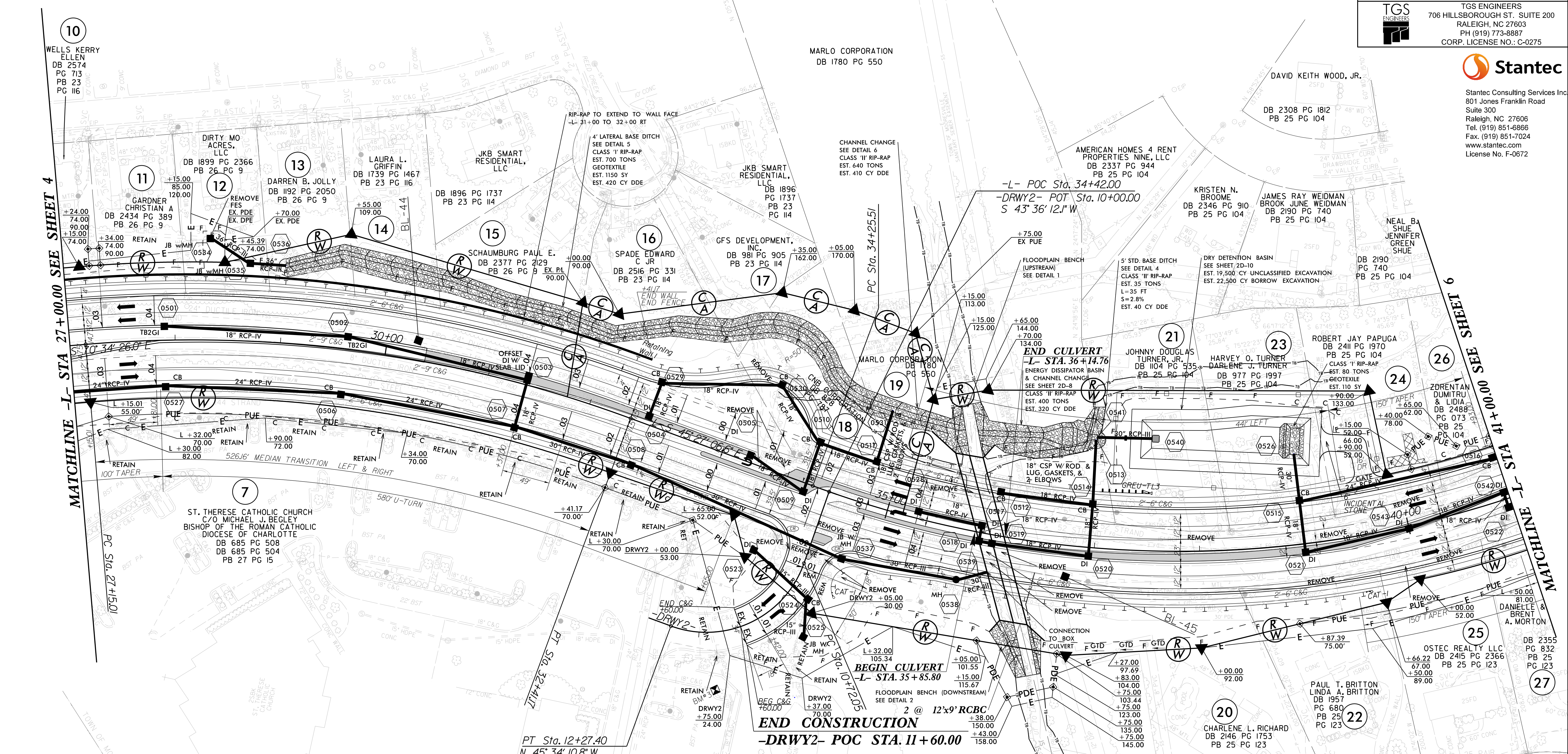
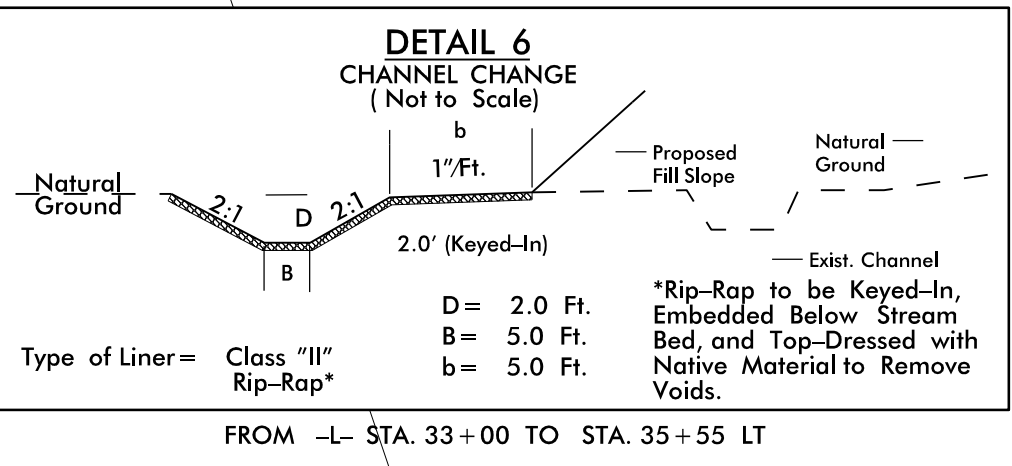
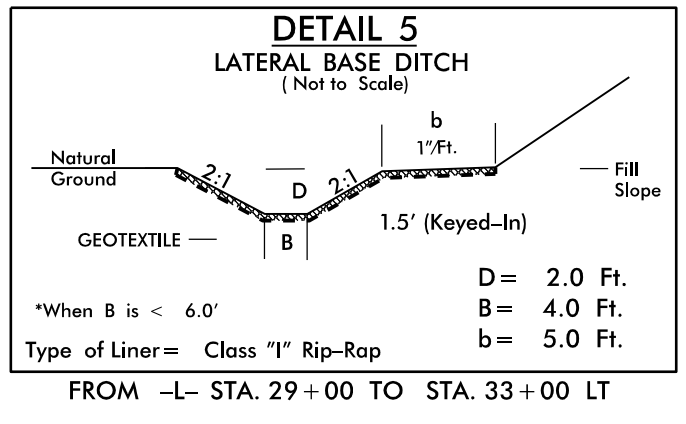
PROJECT REFERENCE NO. R-3833C	SHEET NO. 05
RW SHEET NO.	
ROADWAY DESIGN ENGINEER A. Dean Sahis NORTH CAROLINA PROFESSIONAL ENGINEER NO. 4158 8/24/2023	HYDRAULICS ENGINEER Benjamin J. Henrich NORTH CAROLINA PROFESSIONAL ENGINEER NO. 4158 8/24/2023
DOCUMENT NOT CONSIDERED FINAL UNLESS ALL SIGNATURES COMPLETED	
 TGS ENGINEERS 706 HILLSBOROUGH ST., SUITE 200 RALEIGH, NC 27603 PH (919) 773-8887 CORP. LICENSE NO.: C-0275	
 Stantec Stantec Consulting Services Inc. 801 Jones Franklin Road Suite 300 Raleigh, NC 27606 Tel. (919) 851-6866 Fax. (919) 851-7024 www.stantec.com License No. F-0672	

-L-

PI Sta 29+82.38 Δ = 25° 07' 19.4" (RT) D = 4' 46' 28.7" L = 526.16' T = 267.37' R = 1,200.00' SE = .04 INC = 49'	PI Sta 38+56.09 Δ = 46° 35' 27.8" (LT) D = 5' 43' 46.5" L = 813.17' T = 430.58' R = 1,000.00' SE = .04 INC = 49'
---	---

-DRWY2-

PI Sta 11+71.47 Δ = 90° 49' 37.1" (RT) D = 58' 27' 54.3" L = 155.35' T = 99.42' R = 98.00' SE = SEE PLANS INC = 18'
--



8/24/2023 U:\Projects\3833C\rdy_psh05.dgn