

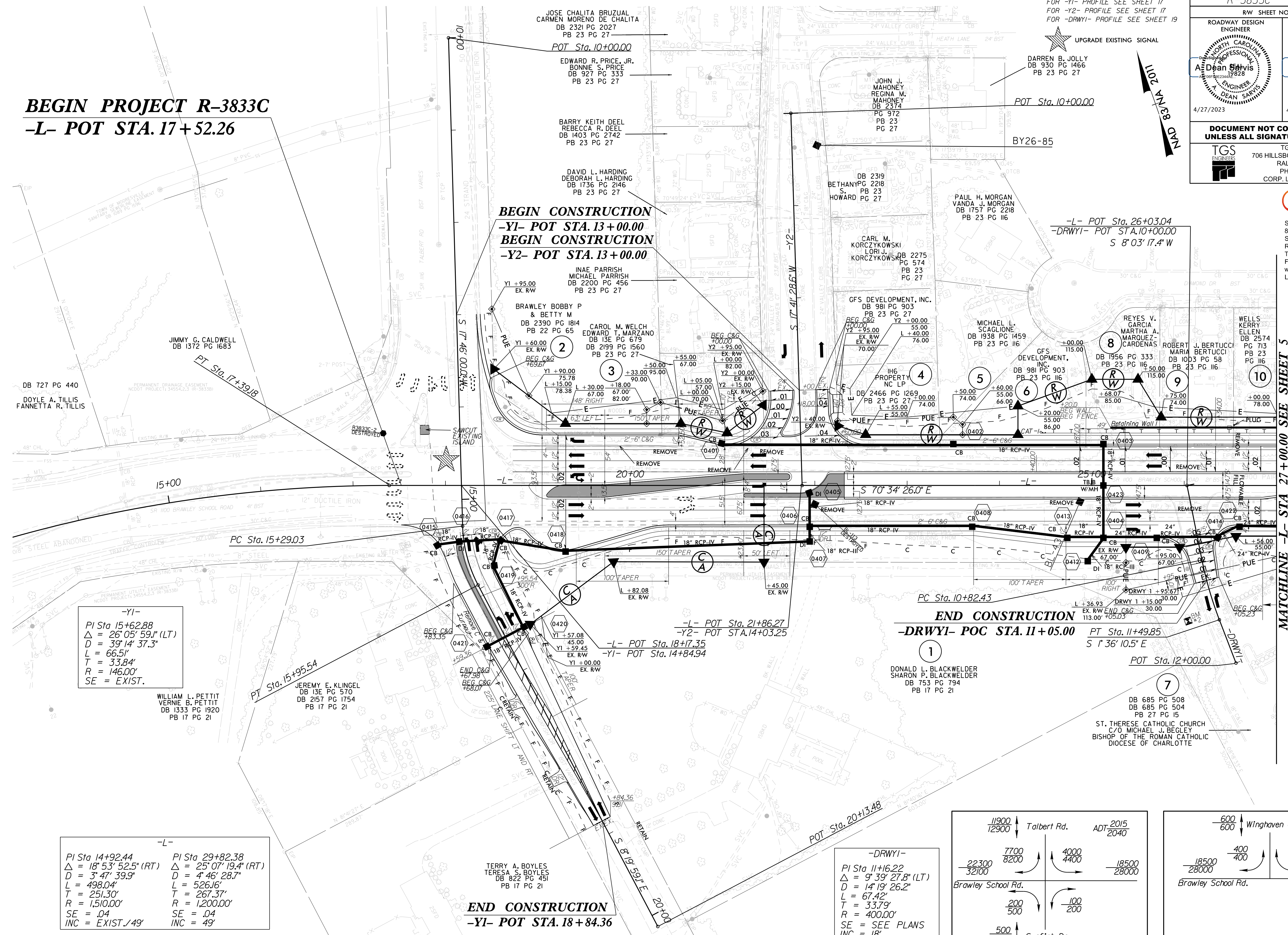
5/14/2023

BEGIN PROJECT R-3833C -L- POT STA. 17+52.26

FOR -L- PROFILE SEE SHEET 12
FOR -Y1- PROFILE SEE SHEET 17
FOR -Y2- PROFILE SEE SHEET 17
FOR -DRWY1- PROFILE SEE SHEET 19

PROJECT REFERENCE NO. R-3833C	SHEET NO. 04
RW SHEET NO.	
ROADWAY DESIGN ENGINEER Dean Savvis NORTH CAROLINA PROFESSIONAL ENGINEER 044158 4/27/2023	HYDRAULICS ENGINEER William J. Henrich NORTH CAROLINA PROFESSIONAL ENGINEER 044158 4/27/2023
DOCUMENT NOT CONSIDERED FINAL UNLESS ALL SIGNATURES COMPLETED	
TGS ENGINEERS 706 HILLSBOROUGH ST., SUITE 200 RALEIGH, NC 27603 PH (919) 773-8887 CORP. LICENSE NO.: C-0275	

Stantec
Stantec Consulting Services Inc.
801 Jones Franklin Road
Suite 300
Raleigh, NC 27606
Tel. (919) 851-6866
Fax. (919) 851-7024
www.stantec.com
License No. F-0672



-Y1-
 PI Sta 15+62.88
 $\Delta = 26^{\circ} 05' 59''$ (LT)
 D = 39' 14' 37.3"
 L = 66.5'
 T = 33.84'
 R = 146.00'
 SE = EXIST.

WILLIAM L. PETTIT
 VERNIE B. PETTIT
 DB 1333 PG 1920
 PB 17 PG 21

PT Sta. 15+95.54
 JEREMY E. KLINGEL
 DB 13E PG 570
 DB 2157 PG 1754
 PB 17 PG 21

TERRY A. BOYLES
 TERESA S. BOYLES
 DB 822 PG 451
 PB 17 PG 21

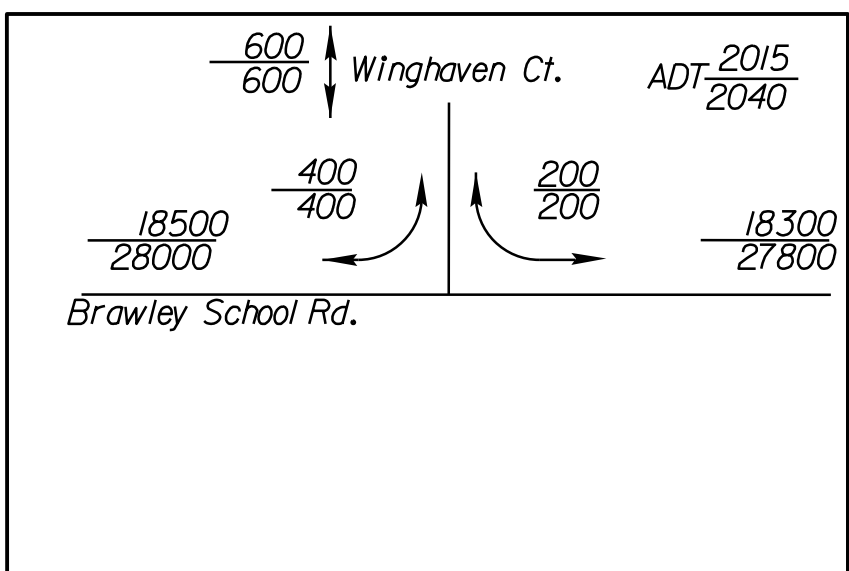
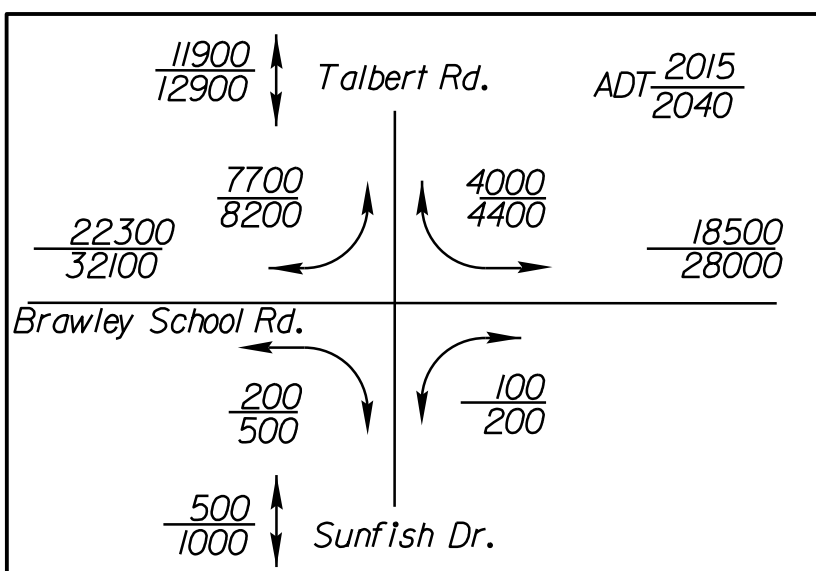
1
 DONALD L. BLACKWELDER
 SHARON P. BLACKWELDER
 DB 753 PG 794
 PB 17 PG 21

7
 DB 685 PG 508
 DB 685 PG 504
 PB 27 PG 15
 ST. THERESE CATHOLIC CHURCH
 C/O MICHAEL J. BEGLEY
 BISHOP OF THE ROMAN CATHOLIC
 DIOCESE OF CHARLOTTE

-L-
 PI Sta 14+92.44 PI Sta 29+82.38
 $\Delta = 18^{\circ} 53' 52.5''$ (RT) $\Delta = 25^{\circ} 07' 19.4''$ (RT)
 D = 3' 47' 39.9" D = 4' 46' 28.7"
 L = 498.04' L = 526.16'
 T = 251.30' T = 267.37'
 R = 1,510.00' R = 1,200.00'
 SE = .04 SE = .04
 INC = EXIST./49' INC = 49'

END CONSTRUCTION
 -Y1- POT STA. 18+84.36

-DRWY1-
 PI Sta 11+16.22
 $\Delta = 9^{\circ} 39' 27.8''$ (LT)
 D = 14' 19' 26.2"
 L = 67.42'
 T = 33.79'
 R = 400.00'
 SE = SEE PLANS
 INC = 18'



MATCHLINE -L- STA 27+00.00 SEE SHEET 5

3/30/2023
U:\Projects\2023\04\12\38333C\rdy\psh04.dgn