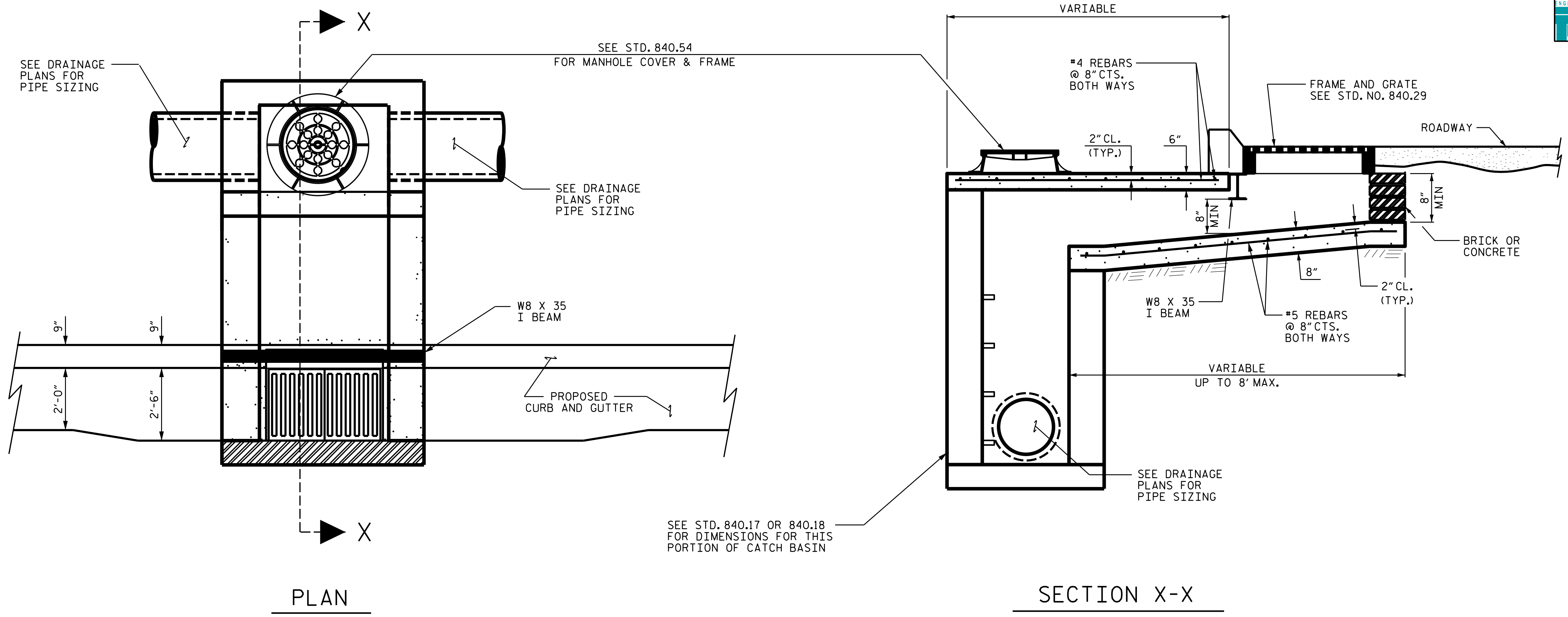


DOCUMENT NOT CONSIDERED FINAL  
UNLESS ALL SIGNATURES COMPLETED

**TGS ENGINEERS**  
706 HILLSBOROUGH STREET  
SUITE 200  
RALEIGH, NC 27603  
PH (919) 773-8887  
CORP. LICENSE NO.: C-0275



OFFSET 2GI W/ MANHOLE

**NOTES:**

MORTAR JOINTS 1/2" TO 1/4" THICK.

USE CLASS "B" CONCRETE THROUGHOUT.

PROVIDE ALL CATCH BASINS OVER 3'-6" IN DEPTH WITH STEPS 1'-0" ON CENTER. USE STEPS WHICH COMPLY WITH STD. DRAWING 840.66

USE BRICK OR CONCRETE BLOCK WHICH COMPLIES WITH THE REQUIREMENTS OF SECTION 840 OF THE STANDARD SPECIFICATIONS.

CHAMFER ALL EXPOSED CORNERS 1".

DRAWING NOT TO SCALE.

DRAWN BY : STM DATE : 03/23  
CHECKED BY : MGC DATE : 03/23