



| | |
|----------------------------------|-------------------|
| PROJECT REFERENCE NO. R-3833C | SHEET NO. 2B-1 |
| ROADWAY DESIGN ENGINEER | |
| | |

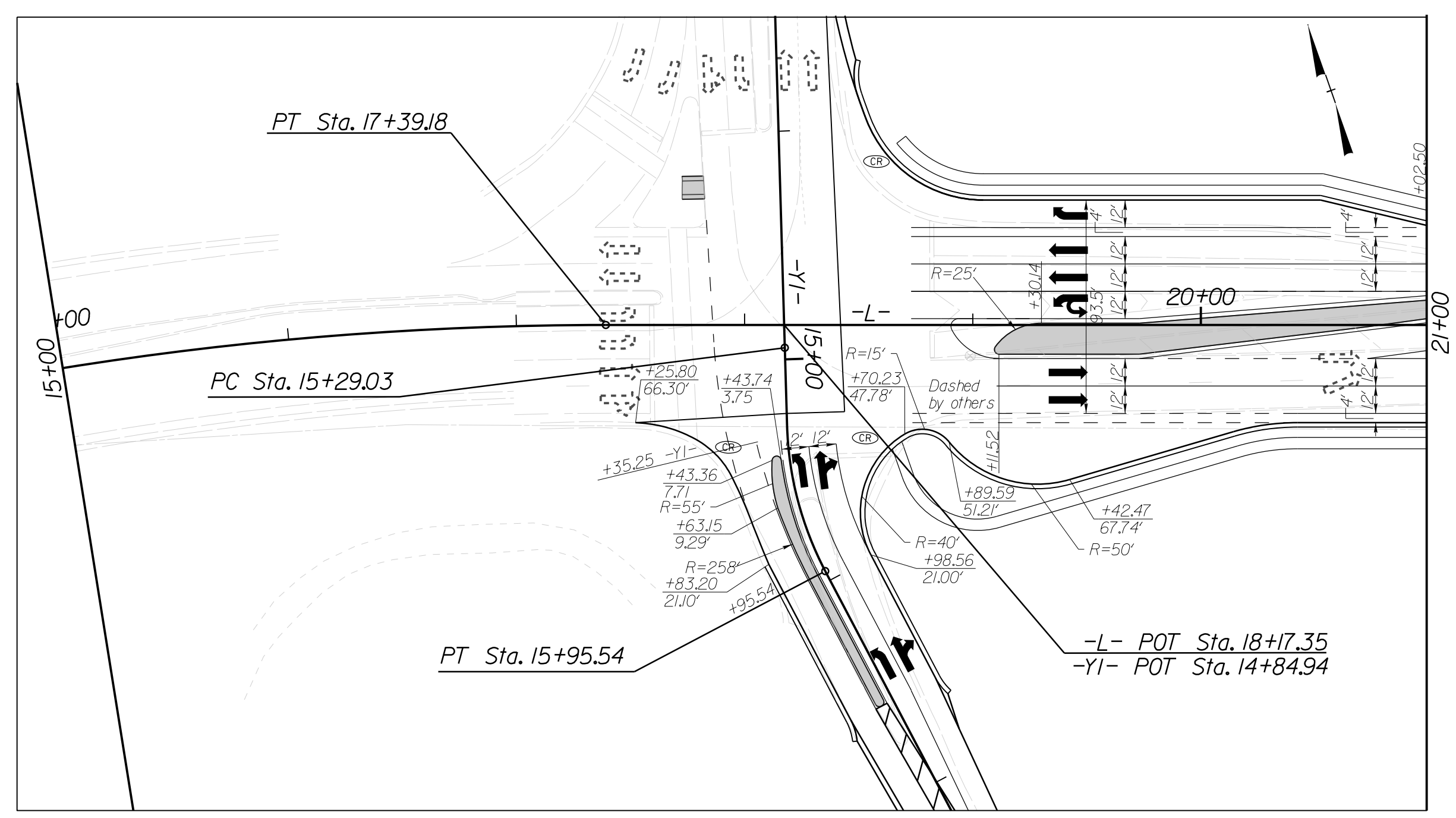
**DOCUMENT NOT CONSIDERED FINAL
UNLESS ALL SIGNATURES COMPLETED**

TGS ENGINEERS
706 HILLSBOROUGH ST. SUITE 200
RALEIGH, NC 27603
PH (919) 773-8887
CORP. LICENSE NO.: C-0275

Stantec

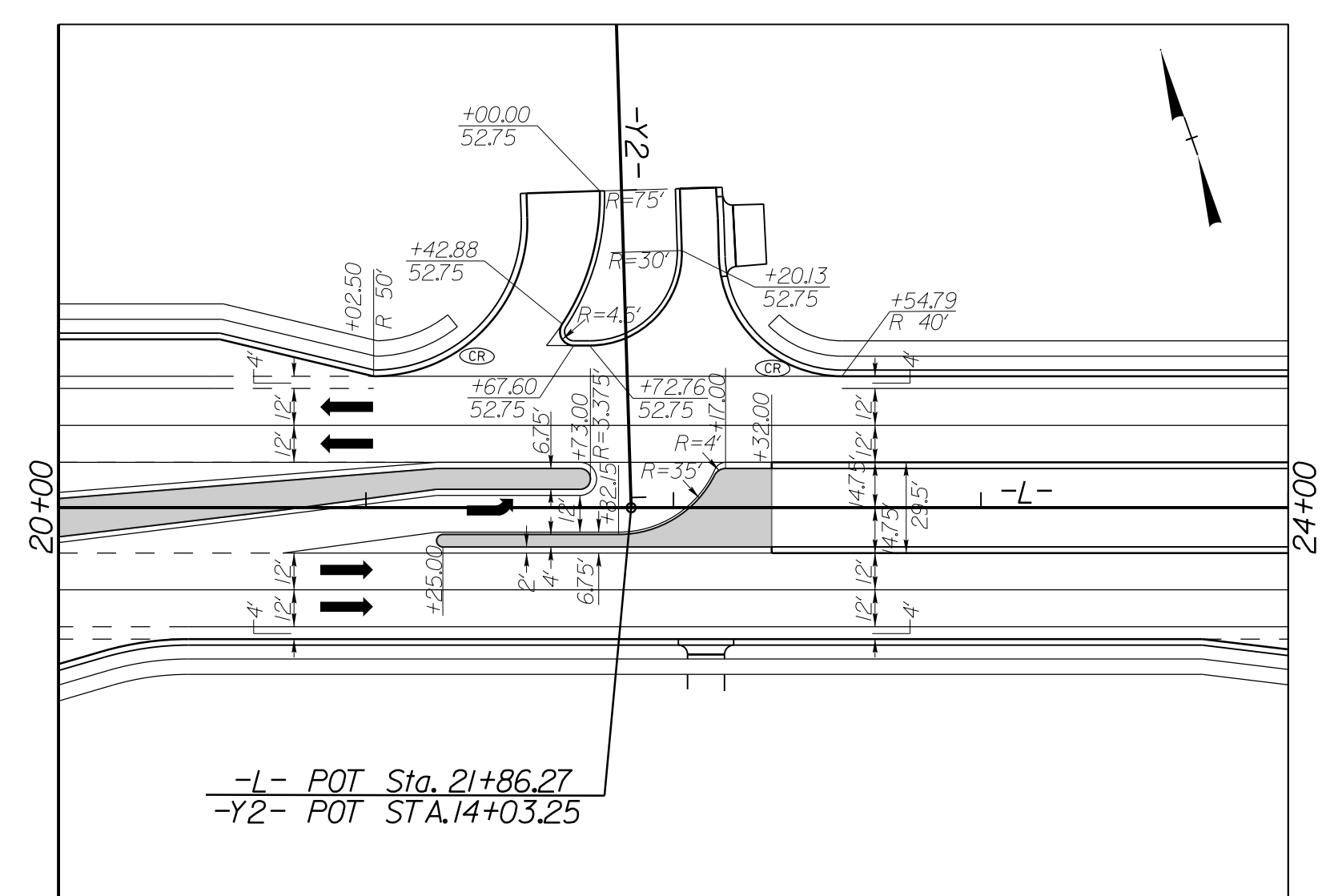
Stantec Consulting Services Inc.
801 Jones Franklin Road
Suite 300
Raleigh, NC 27606
Tel. (919) 851-8868
Fax. (919) 851-7024
www.stantec.com
License No. F-0672

INTERSECTION DETAIL @
-L- (SR 1100-BRAWLEY SCHOOL RD.) &
-Y1- (TALBERT /SUNFISH)



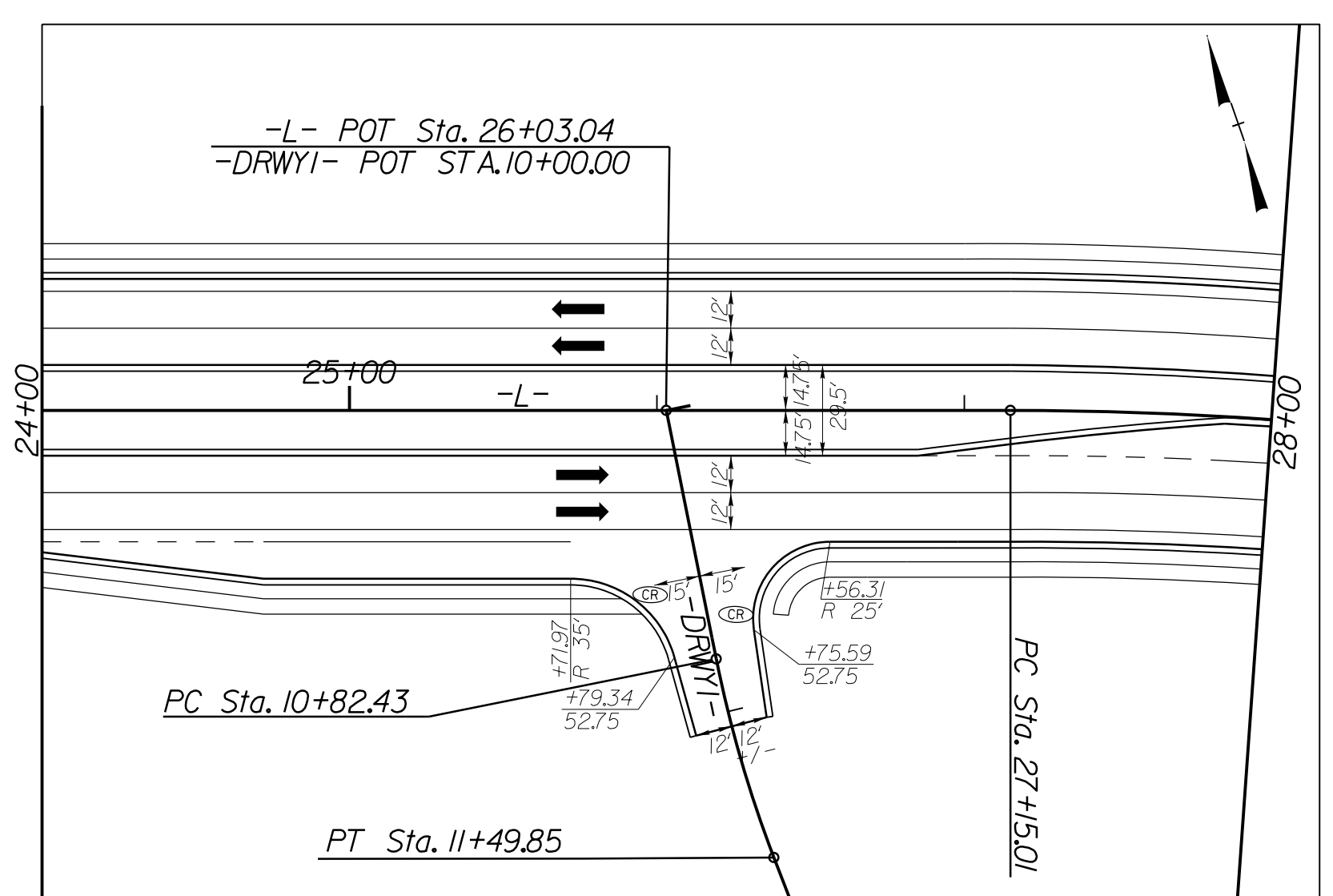
-L- STA. 15+00 TO STA. 21+00
INTERSECTION DETAIL SHOWN FROM PLAN SHEET 4

INTERSECTION DETAIL @
-L- (SR 1100-BRAWLEY SCHOOL RD.) &
-Y2- (WINGHAVEN CT.)



-L- STA. 20+00 TO STA. 24+00
INTERSECTION DETAIL SHOWN FROM PLAN SHEET 4

INTERSECTION DETAIL @
-L- (SR 1100-BRAWLEY SCHOOL RD.) &
-DRWY1-



-L- STA. 24+00 TO STA. 28+00
INTERSECTION DETAIL SHOWN FROM PLAN SHEET 4

MONOLITHIC ISLANDS

ALL MONOLITHIC ISLAND RADII
ARE 2' UNLESS OTHERWISE LABELED