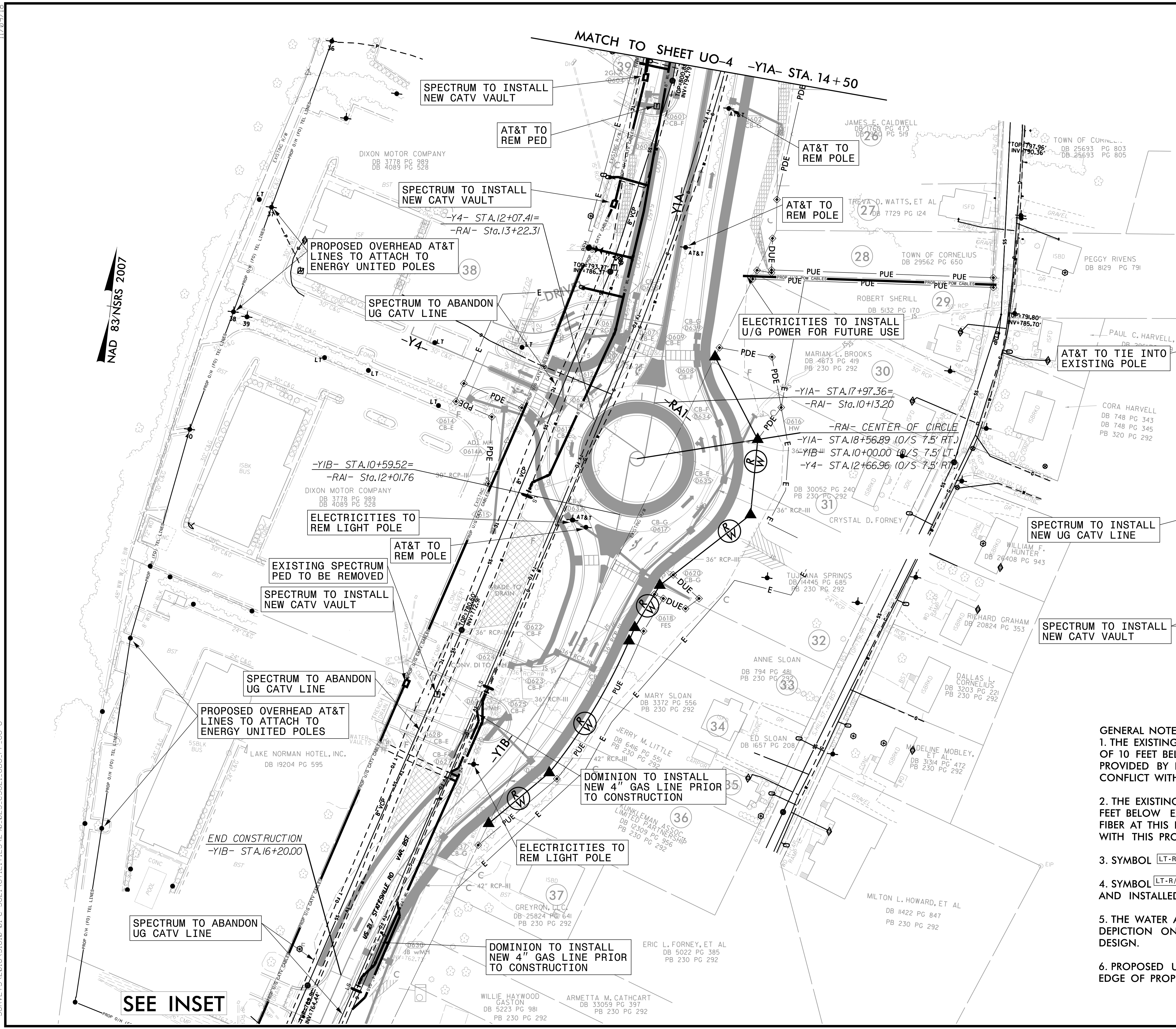


UTILITIES BY OTHERS

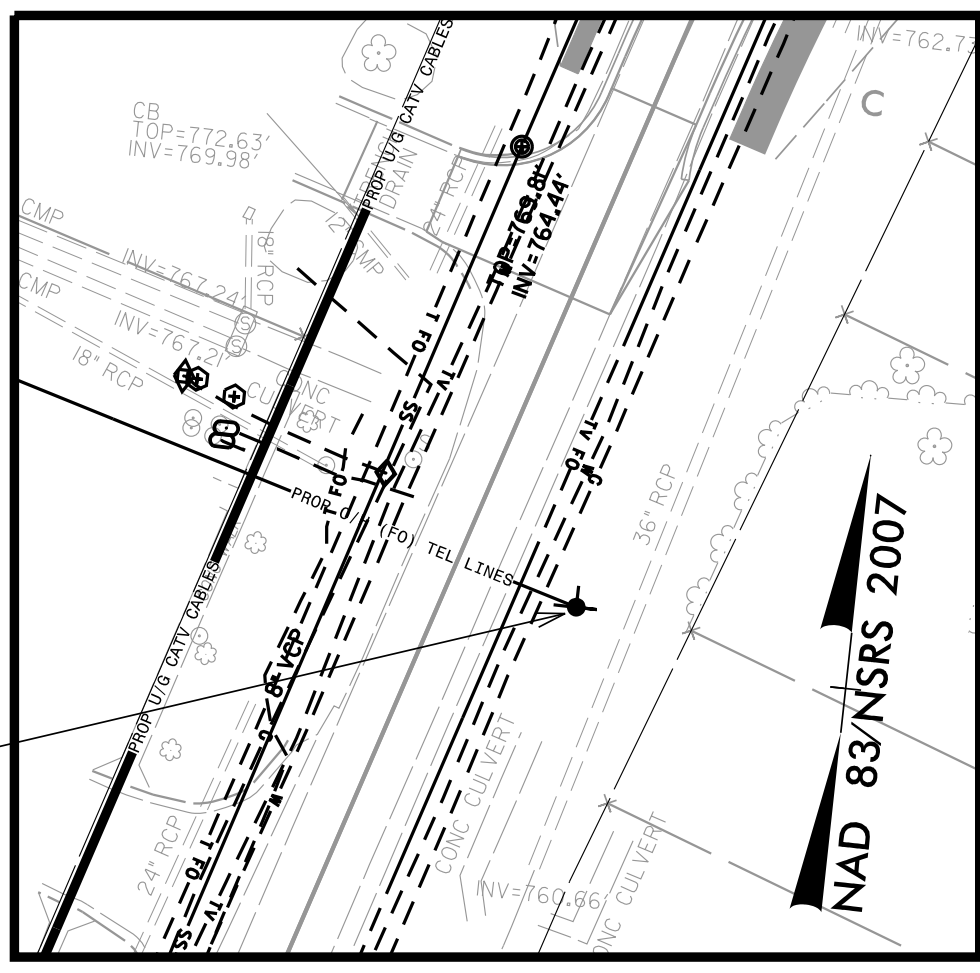
ALL PROPOSED UTILITY WORK SHOWN ON THIS SHEET WILL BE DONE BY OTHERS. NO PAYMENT WILL BE MADE TO THE CONTRACTOR FOR PROPOSED UTILITY WORK SHOWN ON THIS SHEET.



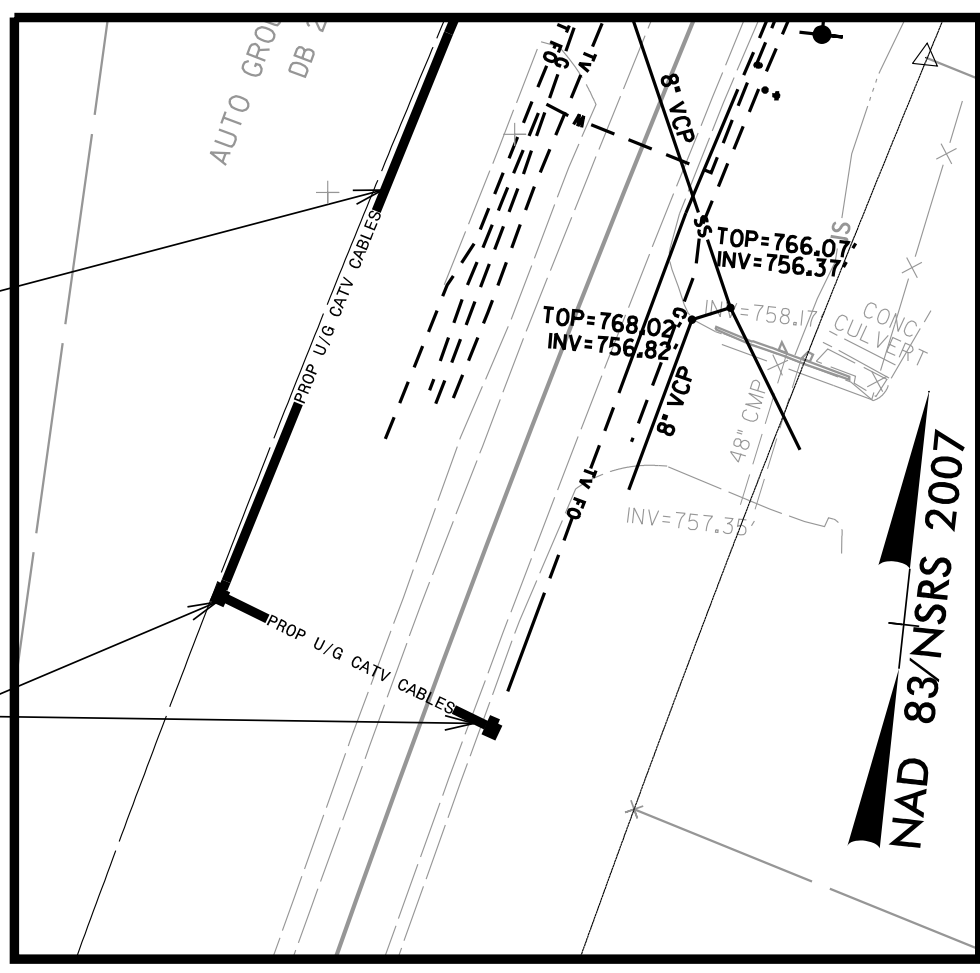
NAD 83/NSRS 2007

NAD 83/NSRS 2007

NAD 83/NSRS 2007



INSET



INSET

- GENERAL NOTES**
1. THE EXISTING LUMEN FIBER DUCT BANK IS A MINIMUM OF 10 FEET BELOW EXISTING GRADE AS PER INFORMATION PROVIDED BY LUMEN. IT IS NOT EXPECTED TO BE IN CONFLICT WITH THE PROJECT.
 2. THE EXISTING AT&T FIBER DUCT BANK IS APPROXIMATELY 4.5 FEET BELOW EXISTING GRADE AS PER TEST HOLE REPORT. AT&T FIBER AT THIS LOCATION IS NOT EXPECTED TO BE IN CONFLICT WITH THIS PROJECT.
 3. SYMBOL **LT-R** INDICATES STREET LIGHT TO BE RELOCATED
 4. SYMBOL **LT-R/I** INDICATES STREET LIGHT TO BE REMOVED AND INSTALLED IN SAME LOCATION AFTER CONSTRUCTION
 5. THE WATER AND SEWER ARE BEING SHOWN FOR GRAPHICAL DEPICTION ONLY. REFER TO UC PLANS FOR WATER AND SEWER DESIGN.
 6. PROPOSED UTILITIES MUST BE INSTALLED AT LEAST 5' FROM THE EDGE OF PROPOSED SIGNAL POLES.

SEE INSET

SURVEYS\2016\31610-01 C-5621\UTILITIES\2-90-025-C5621-UBD-PP-U0-6