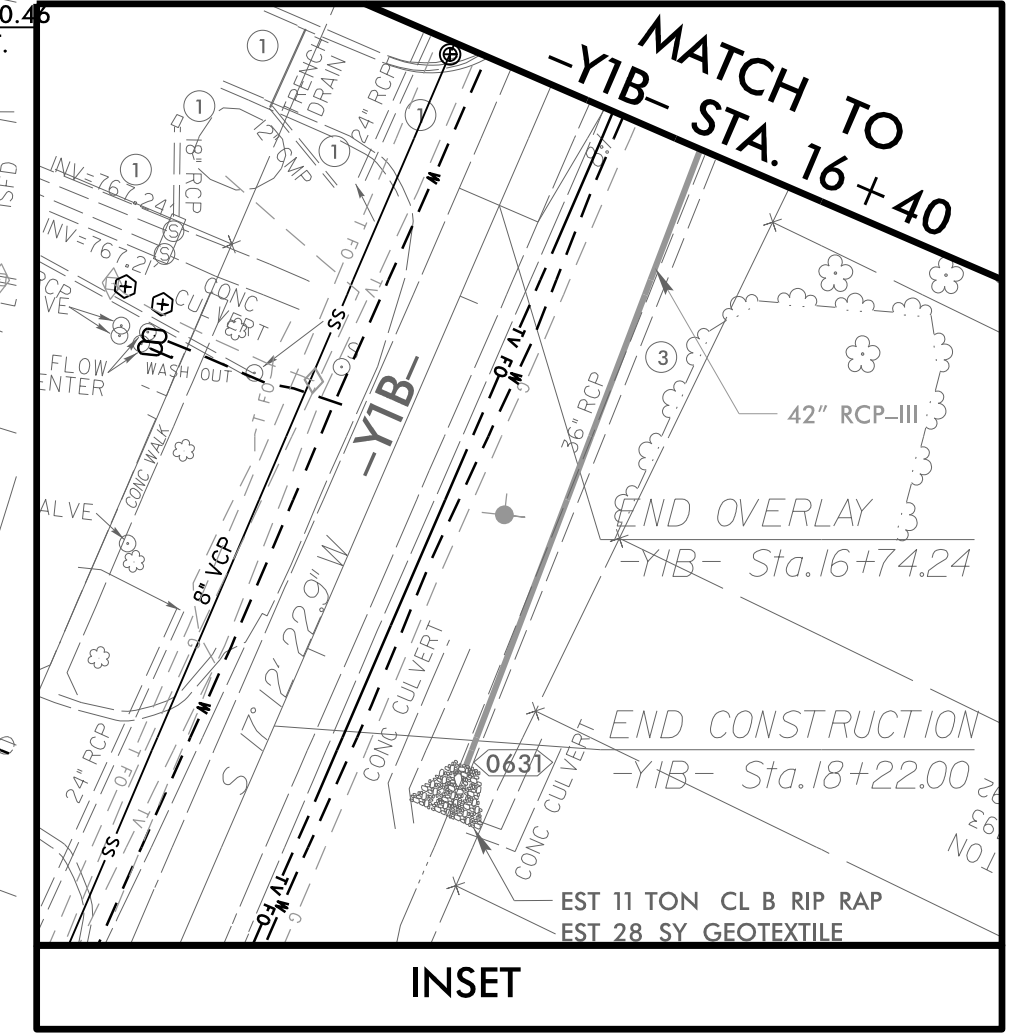
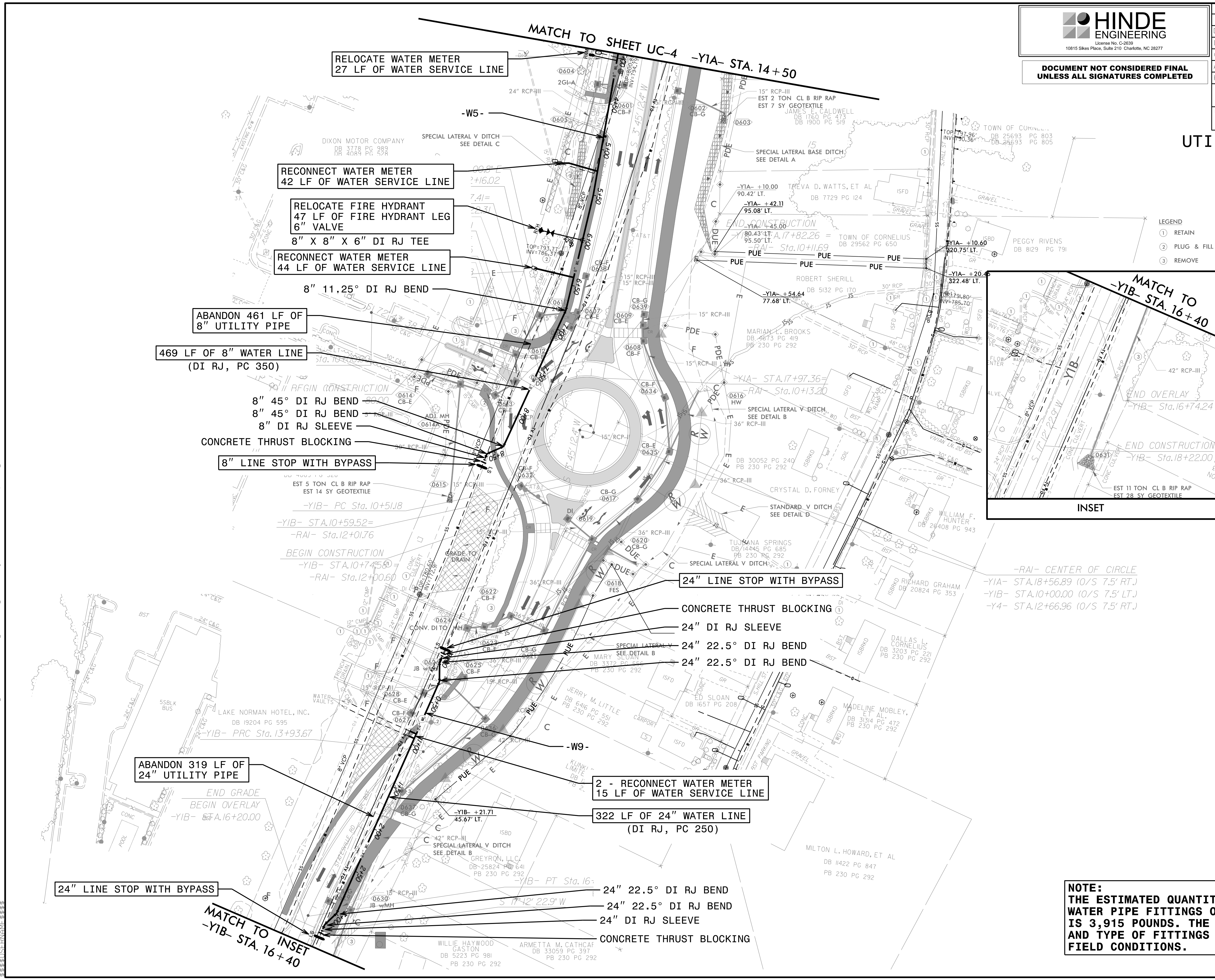


**HINDE ENGINEERING**  
 License No. C-2639  
 10815 Sikes Place, Suite 210 Charlotte, NC 28277

**DOCUMENT NOT CONSIDERED FINAL  
 UNLESS ALL SIGNATURES COMPLETED**

PROJECT REFERENCE NO. <b>C-5621</b>	SHEET NO. <b>UC-6</b>
DESIGNED BY: <b>JKC</b>	
DRAWN BY: <b>JNA</b>	
CHECKED BY: <b>JKC</b>	
APPROVED BY: <b>CLS</b>	
REVISED:	
NORTH CAROLINA DEPARTMENT OF TRANSPORTATION UTILITIES ENGINEERING SEC. PHONE: (919) 707-6690 FAX: (919) 250-4151 UTILITY CONSTRUCTION PLANS ONLY	

# UTILITY CONSTRUCTION



- LEGEND**
- ① RETAIN
  - ② PLUG & FILL
  - ③ REMOVE

NAD 83 NSRS 2007

-RAI- CENTER OF CIRCLE  
 -YIA- STA.18+56.89 (O/S 7.5' RT.)  
 -YIB- STA.10+00.00 (O/S 7.5' LT.)  
 -Y4- STA.12+66.96 (O/S 7.5' RT.)

**NOTE:**  
 THE ESTIMATED QUANTITY OF DUCTILE IRON WATER PIPE FITTINGS ON THIS PLAN SHEET IS 3,915 POUNDS. THE ACTUAL QUANTITY AND TYPE OF FITTINGS WILL VARY BASED ON FIELD CONDITIONS.

22 JUN 2023 09:56 C:\Projects\2019\A2019205.00.CL\Water-C-5621\Design\Utilities\Engineering\UC-Proj\NC-5621\Ut\_6\_UC6\_psh.dgn  
 22 JUN 2023 09:56 C:\Projects\2019\A2019205.00.CL\Water-C-5621\Design\Utilities\Engineering\UC-Proj\NC-5621\Ut\_6\_UC6\_psh.dgn