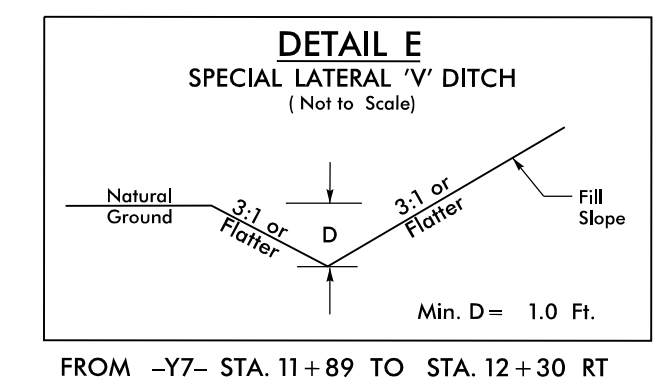


NAD 83/NSRS 2007

- LEGEND**
- ① RETAIN
 - ② PLUG & FILL
 - ③ REMOVE



-Y6- CURVE DATA
 PI Sta 10+90.94
 $\Delta = 27^{\circ} 37' 05.5''$ (LT)
 D = 15' 29' 07.2"
 L = 178.35'
 T = 90.94'
 R = 370.00'
 SE = NC**

-Y7- CURVE DATA
 PI Sta 11+07.12
 $\Delta = 52^{\circ} 01' 23.6''$ (RT)
 D = 35' 48' 35.5"
 L = 145.28'
 T = 78.08'
 R = 160.00'

-Y6- CURVE DATA
 PI Sta 14+19.58
 $\Delta = 46^{\circ} 05' 46.1''$ (LT)
 D = 27' 17' 01.3"
 L = 168.95'
 T = 89.35'
 R = 210.00'
 SE = 02**
 RO = 38'

-Y2- CURVE DATA
 PI Sta 10+79.68
 $\Delta = 39^{\circ} 15' 6.2''$ (RT)
 D = 35' 48' 35.5"
 L = 109.61'
 T = 57.05'
 R = 160.00'

-Y2- CURVE DATA
 PI Sta 15+20.86
 $\Delta = 5^{\circ} 35' 38.8''$ (LT)
 D = 4' 46' 28.7"
 L = 117.16'
 T = 58.63'
 R = 1,200.00'

-RA2- CURVE DATA
 PI Sta 10+00.15
 $\Delta = 359^{\circ} 43' 22.9''$ (LT)
 D = 95' 29' 34.7"
 L = 376.70'
 T = 0.15'
 R = 60.00'

-Y8- CURVE DATA
 PI Sta 10+88.80
 $\Delta = 30^{\circ} 33' 51.0''$ (RT)
 D = 22' 55' 05.9"
 L = 133.36'
 T = 68.31'
 R = 250.00'
 SE = 04
 RO = 76'

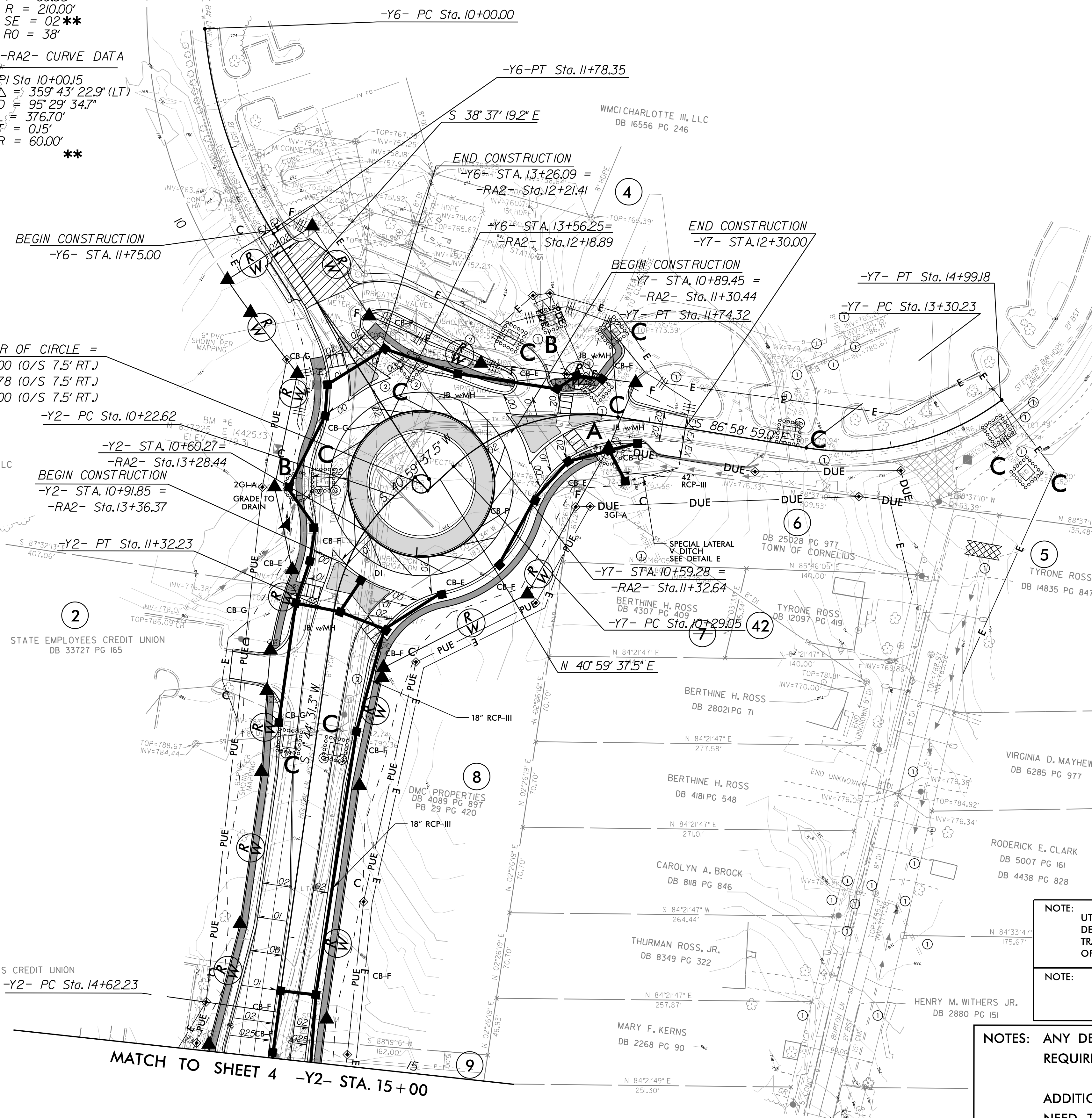
-RA2- CENTER OF CIRCLE =
 -Y2- STA.10+00.00 (O/S 7.5' RT.)
 -Y6- STA.14+15.78 (O/S 7.5' RT.)
 -Y7- STA.10+00.00 (O/S 7.5' RT.)

BEGIN CONSTRUCTION
 -Y6- STA.11+75.00
 -Y2- PC Sta.10+22.62
 -Y2- STA.10+60.27=
 -RA2- Sta.13+28.44
BEGIN CONSTRUCTION
 -Y2- STA.10+91.85 =
 -RA2- Sta.13+36.37

-Y2- PT Sta.11+32.23

-Y2- PC Sta.14+62.23

MATCH TO SHEET 4 -Y2- STA. 15+00



NOTE: UTILIZE FABRIC INSERT INLET PROTECTION DEVICES IN LIEU OF ROCK INLET SEDIMENT TRAPS, TYPE-C AS DIRECTED TO AVOID IMPOUNDMENT OF RUNOFF IN ROADWAY OPEN TO TRAFFIC.

NOTE: PLACE TEMPORARY ROCK SEDIMENT DAMS TYPE - B AND TEMPORARY ROCK SILT CHECKS TYPE - A AT DRAINAGE OUTLETS.

NOTES: ANY DEVIATION FROM OPTIONS GIVEN WILL REQUIRE PRIOR APPROVAL BY ENGINEER.

ADDITIONAL EROSION CONTROL DEVICES MAY NEED TO BE INSTALLED AS DIRECTED BY THE ENGINEER.

REVISIONS

13-MAR-2023 13:23
 R:\Projects\2023\1323\Design\Plan_Sheets\C5621_EC_C&G_EC-5.dgn
 \$\$\$\$USERNAME\$\$\$\$