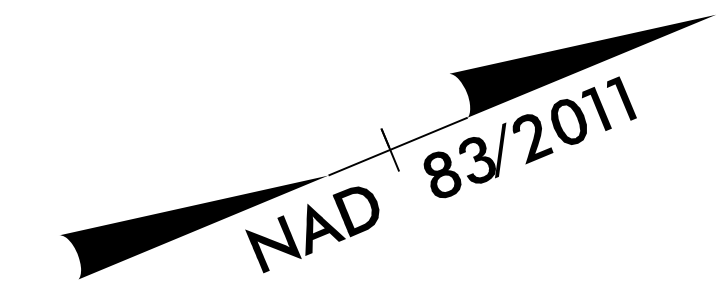
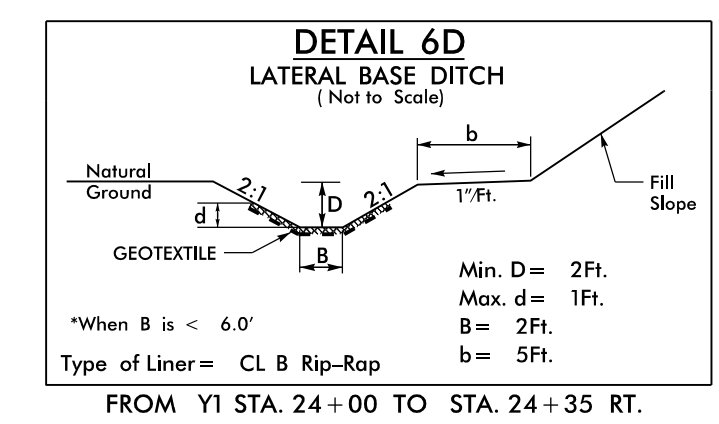
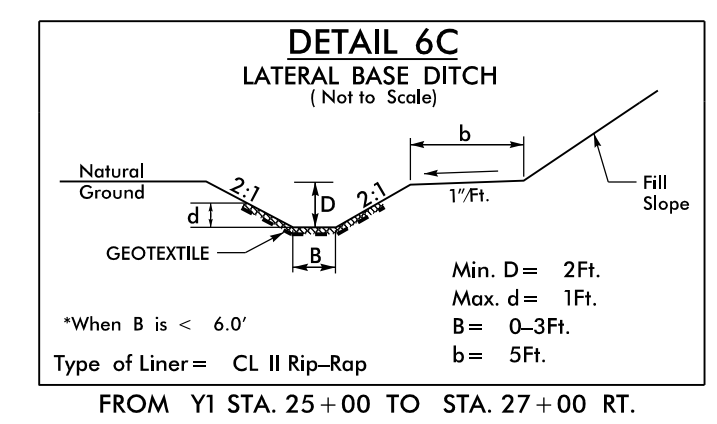
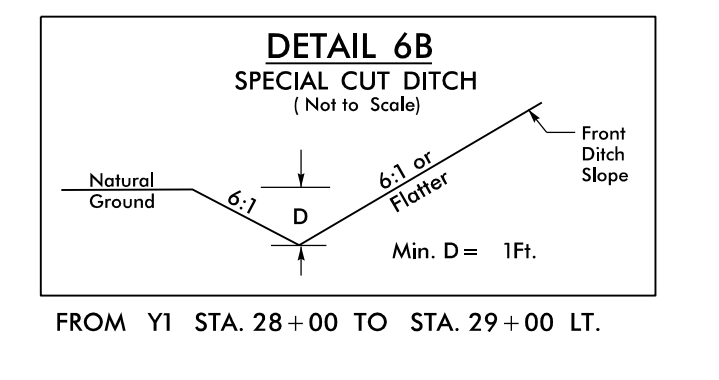
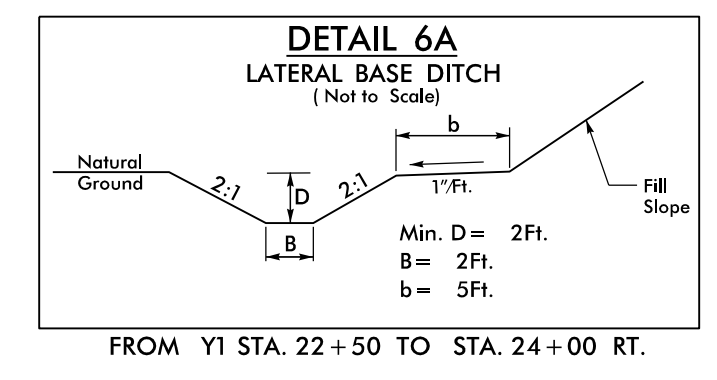


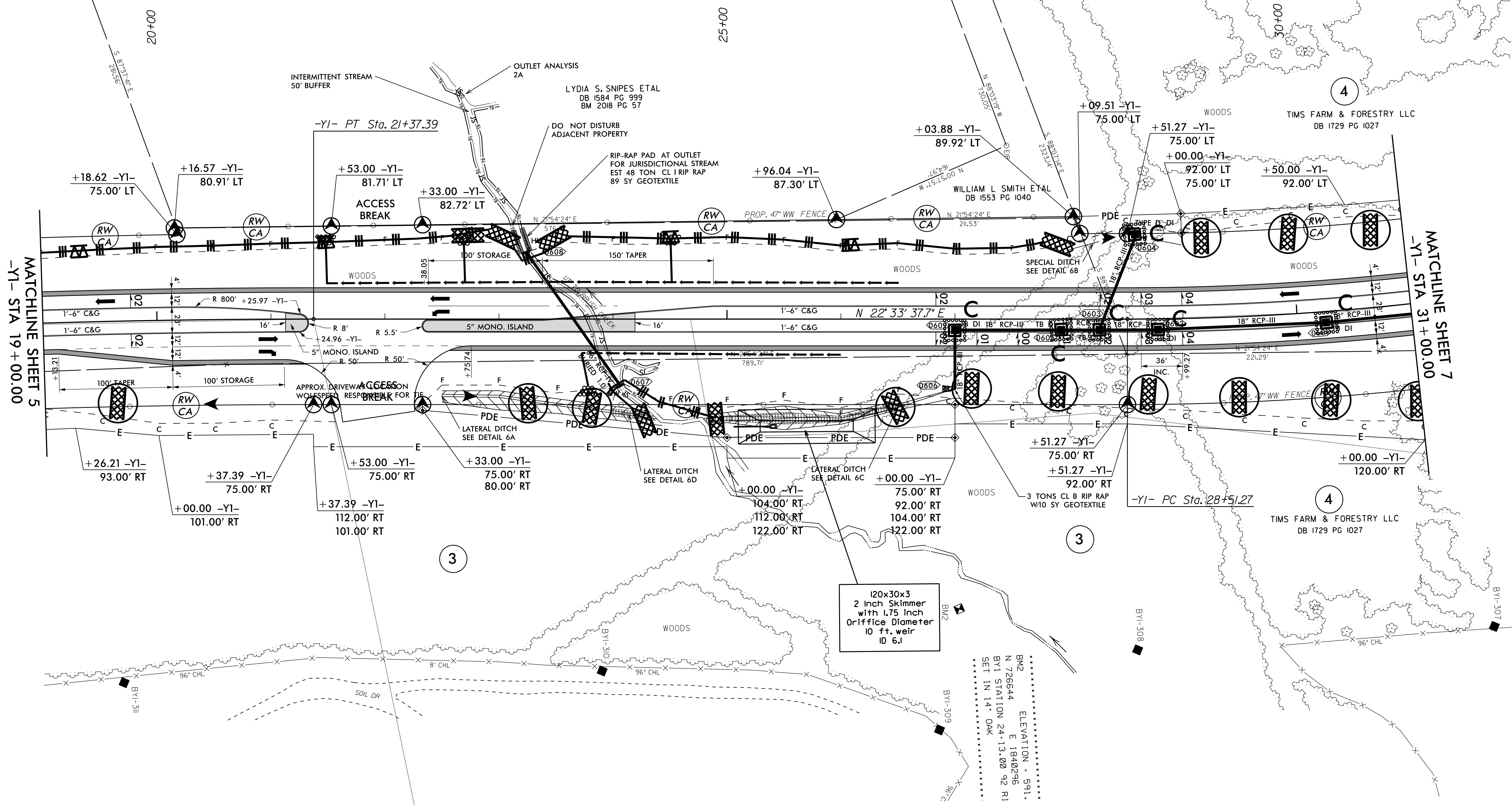
PROJECT REFERENCE NO. HE-0011	SHEET NO. EC-10/CONST.6
RW SHEET NO.	HYDRAULICS ENGINEER
ROADWAY DESIGN ENGINEER	



-YI-
 PI Sta 19+10.53 PI Sta 32+60.23
 Δ = 3° 18' 14.7" (RT) Δ = 2° 09' 51.7" (LT)
 D = 0° 43' 40.9" D = 2° 29' 28.0"
 L = 453.84' L = 809.45'
 T = 226.98' T = 408.95'
 R = 7,870.00' R = 2,300.00'
 SE = NC SE = 04
 RO = N/A RO = 144



FINAL PHASE
 EROSION CONTROL FOR
 CONSTRUCTION SHEET 6



120x30x3
 2 inch Skimmer
 with 1.75 inch
 Orifice Diameter
 10 ft. weir
 ID 6.1

BK2 ELEVATION = 591.
 N 726644 E 1840296
 BY1 STATION 24+13.00 92 R1
 SET IN 14' OAK

FOR -YI- PROFILE, SEE SHEET 8

8/17/99
 SSSJL\USER\AMESS55
 17-JUL-2023 15:24
 pw:/gfnel-pw-bentley.com/gfnel-pw-01/Documents/Projects/691725-WorkingTask_017 - Chatham County SiteErosion Control/CADD/PSHE-0011_rdy_psh06_EC10.dgn