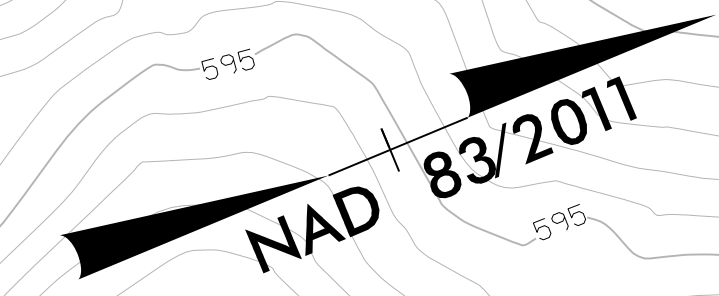
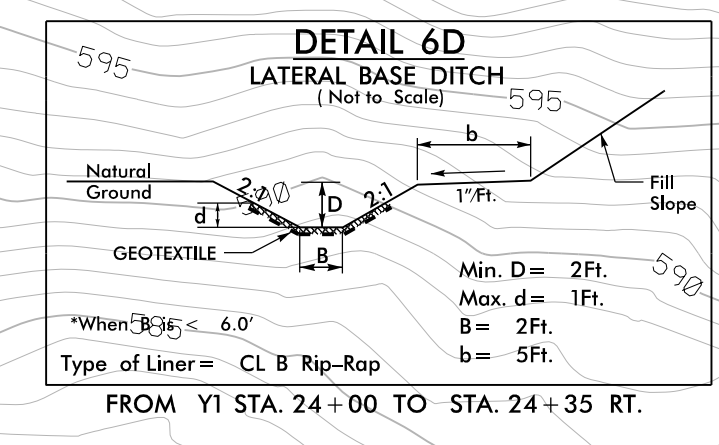
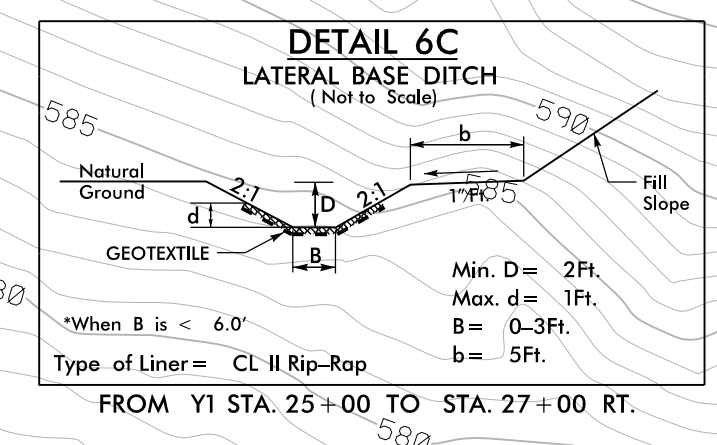
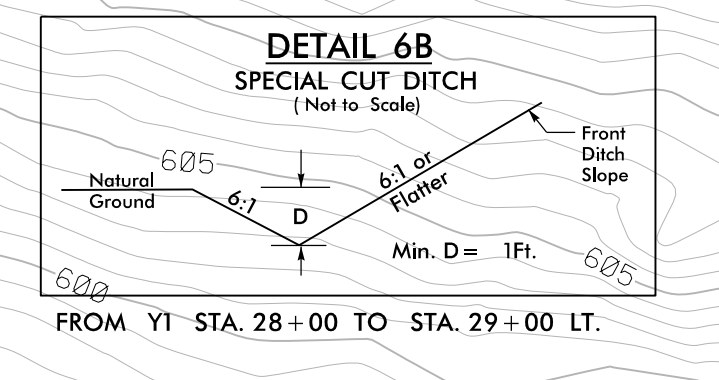
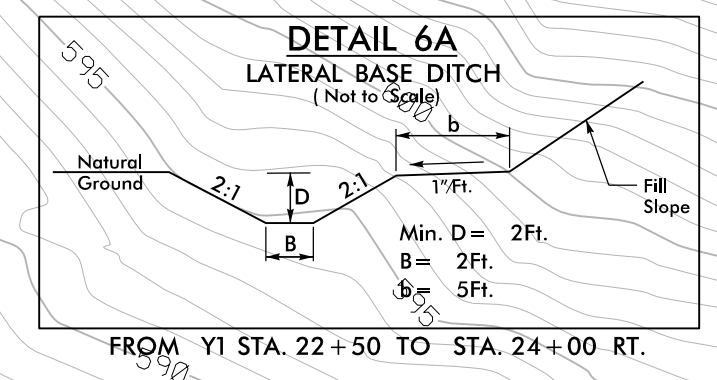


PROJECT REFERENCE NO.	SHEET NO.
HE-0011	EC-6/CONST.6
RW SHEET NO.	
ROADWAY DESIGN ENGINEER	HYDRAULICS ENGINEER



$PI\ Sta\ 19+10.53$
 $\Delta = 3^{\circ}18'14.7''\ (RT)$
 $D = 0^{\circ}43'40.9''$
 $L = 453.84'$
 $T = 226.98'$
 $R = 7,870.00'$
 $SE = NC$
 $RO = N/A$

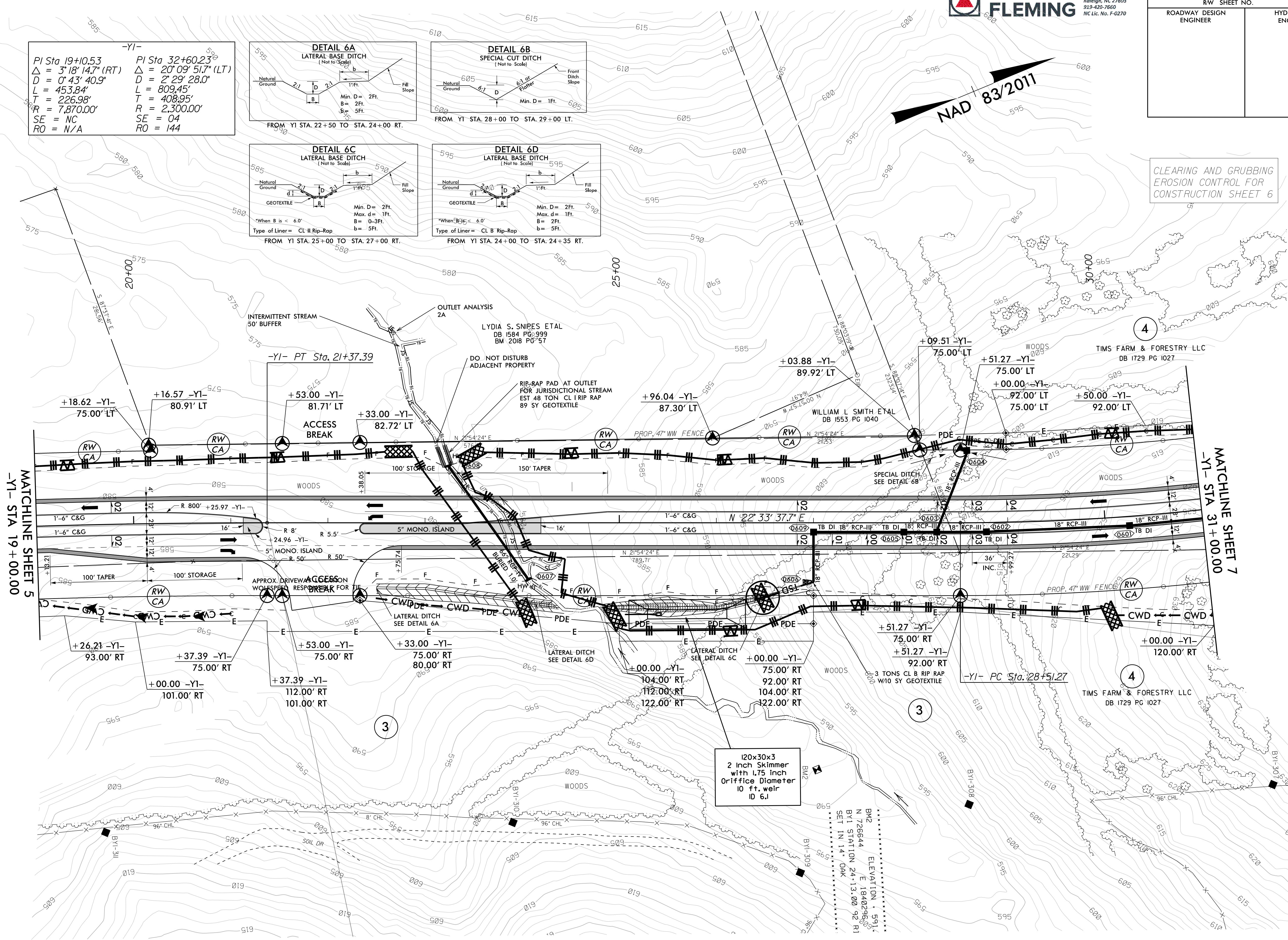
$PI\ Sta\ 32+60.23$
 $\Delta = 20^{\circ}09'51.7''\ (LT)$
 $D = 2^{\circ}29'28.0''$
 $L = 809.45'$
 $T = 408.95'$
 $R = 2,300.00'$
 $SE = 04$
 $RO = 144$



CLEARING AND GRUBBING
EROSION CONTROL FOR
CONSTRUCTION SHEET 6

MATCHLINE SHEET 5
-Y1- STA 19 + 00.00

MATCHLINE SHEET 7
-Y1- STA 31 + 00.00



120x30x3
2 inch Skimmer
with 1.75 inch
Orifice Diameter
10 ft. weir
ID 6.1

FOR -Y1- PROFILE, SEE SHEET 8

8.17.17.99
 S:\S\USER\AMESS\17-JUL-2023 15:23
 pw\gfnel-pw.bentley.com\gfnel-pw-01\Documents\Projects\691725-Working\Task 017 - Chatham County SiteErosion Control\CADD\PSHE-0011_rdy_psh06_EC6.dgn