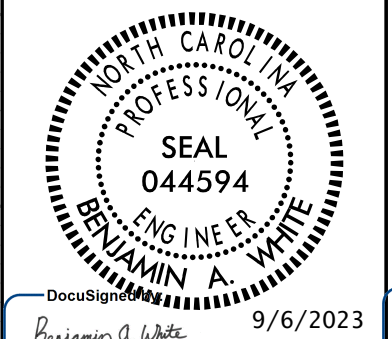
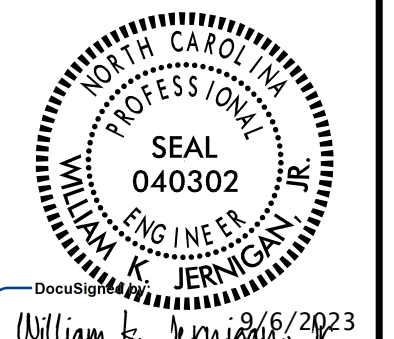


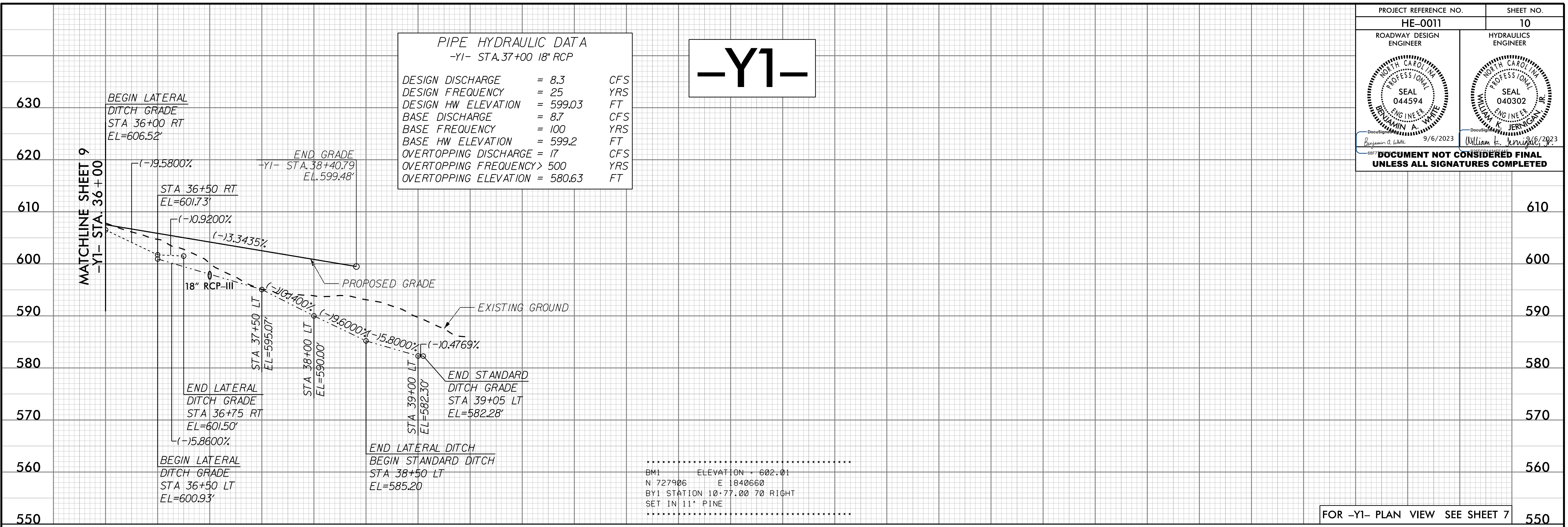
5/28/23

PROJECT REFERENCE NO. HE-0011	SHEET NO. 10
ROADWAY DESIGN ENGINEER	HYDRAULICS ENGINEER
	
Benjamin A. White 9/6/2023	William K. Jernigan 9/6/2023
DOCUMENT NOT CONSIDERED FINAL UNLESS ALL SIGNATURES COMPLETED	

PIPE HYDRAULIC DATA
-Y1- STA. 37+00 18" RCP

DESIGN DISCHARGE	= 8.3	CFS
DESIGN FREQUENCY	= 25	YRS
DESIGN HW ELEVATION	= 599.03	FT
BASE DISCHARGE	= 8.7	CFS
BASE FREQUENCY	= 100	YRS
BASE HW ELEVATION	= 599.2	FT
OVERTOPPING DISCHARGE	= 17	CFS
OVERTOPPING FREQUENCY	> 500	YRS
OVERTOPPING ELEVATION	= 580.63	FT

-Y1-



.....
 BM1 ELEVATION = 602.01
 N 727906 E 1840660
 BY1 STATION 10+77.00 70 RIGHT
 SET IN 11" PINE

7/27/2023
c:\pwworking\gfpw01\bwht\el\551332\HE-0011-rdy-pf110.dgn