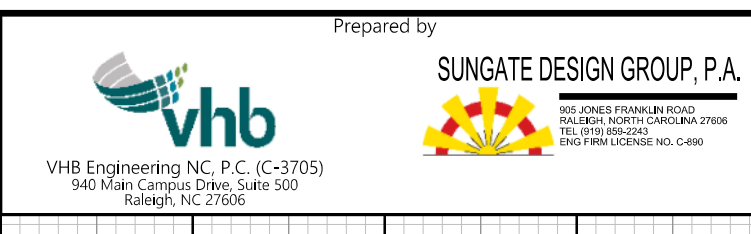


5/28/2023



| | |
|---|---|
| PROJECT REFERENCE NO. U-5312 | SHEET NO. 22 |
| ROADWAY DESIGN ENGINEER SEAL 014493 Sungate Design Group, P.A. 7/2/2023 | HYDRAULICS ENGINEER SEAL 26971 Sungate Design Group, P.A. 7/12/2023 |

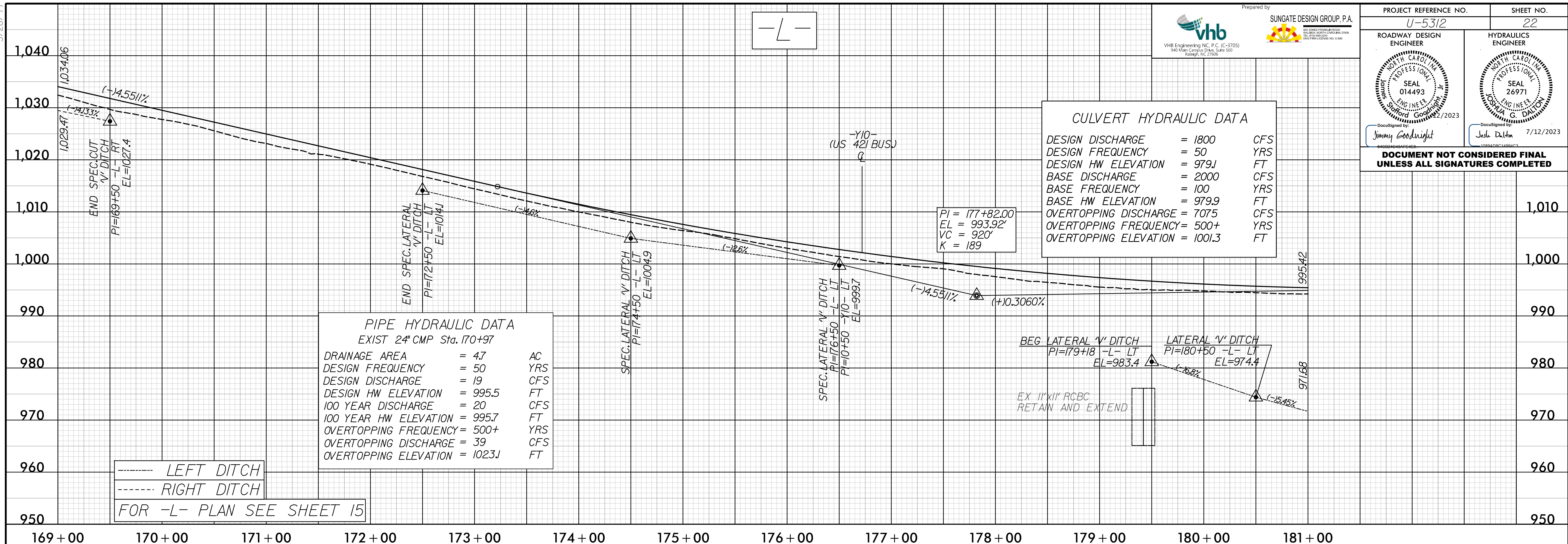
CULVERT HYDRAULIC DATA

| | | |
|-----------------------|----------|-----|
| DESIGN DISCHARGE | = 1800 | CFS |
| DESIGN FREQUENCY | = 50 | YRS |
| DESIGN HW ELEVATION | = 979J | FT |
| BASE DISCHARGE | = 2000 | CFS |
| BASE FREQUENCY | = 100 | YRS |
| BASE HW ELEVATION | = 979.9 | FT |
| OVERTOPPING DISCHARGE | = 7075 | CFS |
| OVERTOPPING FREQUENCY | = 500+ | YRS |
| OVERTOPPING ELEVATION | = 1001.3 | FT |

PIPE HYDRAULIC DATA
EXIST 24" CMP Sta. 170+97

| | | |
|-----------------------|---------|-----|
| DRAINAGE AREA | = 4.7 | AC |
| DESIGN FREQUENCY | = 50 | YRS |
| DESIGN DISCHARGE | = 19 | CFS |
| DESIGN HW ELEVATION | = 995.5 | FT |
| 100 YEAR DISCHARGE | = 20 | CFS |
| 100 YEAR HW ELEVATION | = 995.7 | FT |
| OVERTOPPING FREQUENCY | = 500+ | YRS |
| OVERTOPPING DISCHARGE | = 39 | CFS |
| OVERTOPPING ELEVATION | = 1023J | FT |

----- LEFT DITCH
 ----- RIGHT DITCH
 FOR -L- PLAN SEE SHEET 15

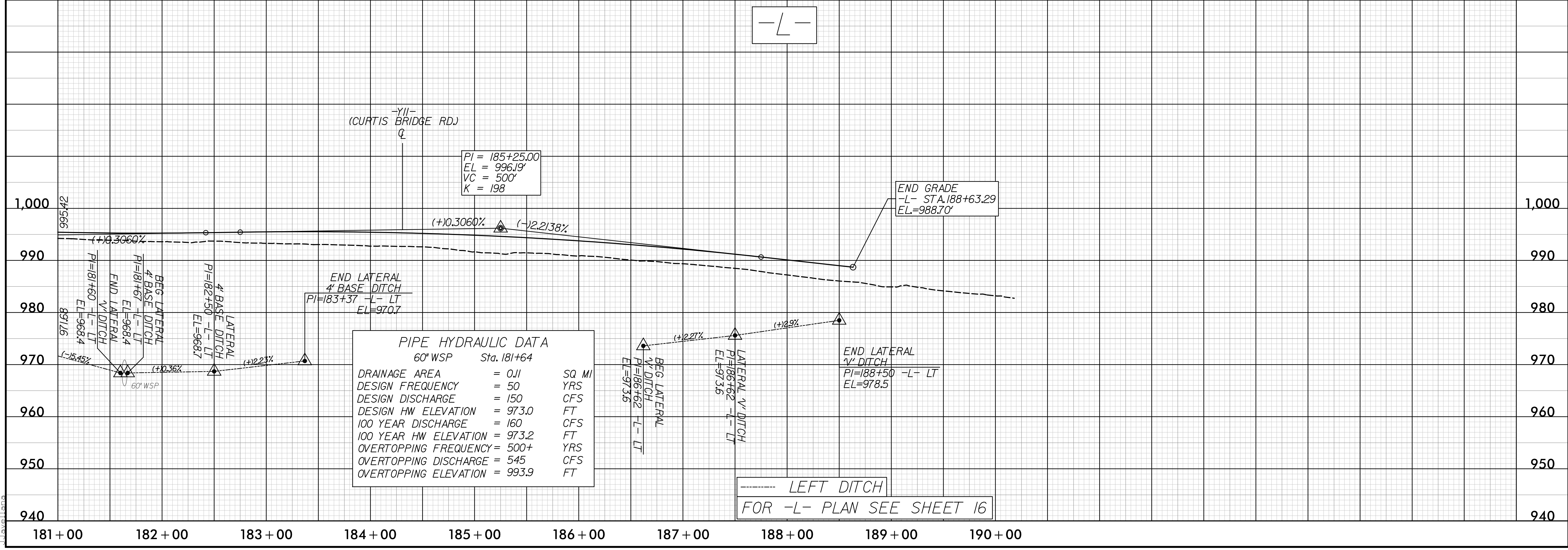


-L-

PIPE HYDRAULIC DATA
60" WSP Sta. 181+64

| | | |
|-----------------------|---------|-------|
| DRAINAGE AREA | = 0.11 | SQ MI |
| DESIGN FREQUENCY | = 50 | YRS |
| DESIGN DISCHARGE | = 150 | CFS |
| DESIGN HW ELEVATION | = 973.0 | FT |
| 100 YEAR DISCHARGE | = 160 | CFS |
| 100 YEAR HW ELEVATION | = 973.2 | FT |
| OVERTOPPING FREQUENCY | = 500+ | YRS |
| OVERTOPPING DISCHARGE | = 545 | CFS |
| OVERTOPPING ELEVATION | = 993.9 | FT |

----- LEFT DITCH
 FOR -L- PLAN SEE SHEET 16



5/28/2023
F:\2023\Projects\U5312\rdy_pf122.dgn