

5/14/99

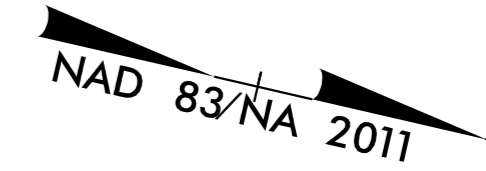
FINAL  
EROSION CONTROL FOR  
CONSTRUCTION SHEET 21

NOTES: ANY DEVIATION FROM OPTIONS GIVEN WILL  
REQUIRE PRIOR APPROVAL BY ENGINEER.

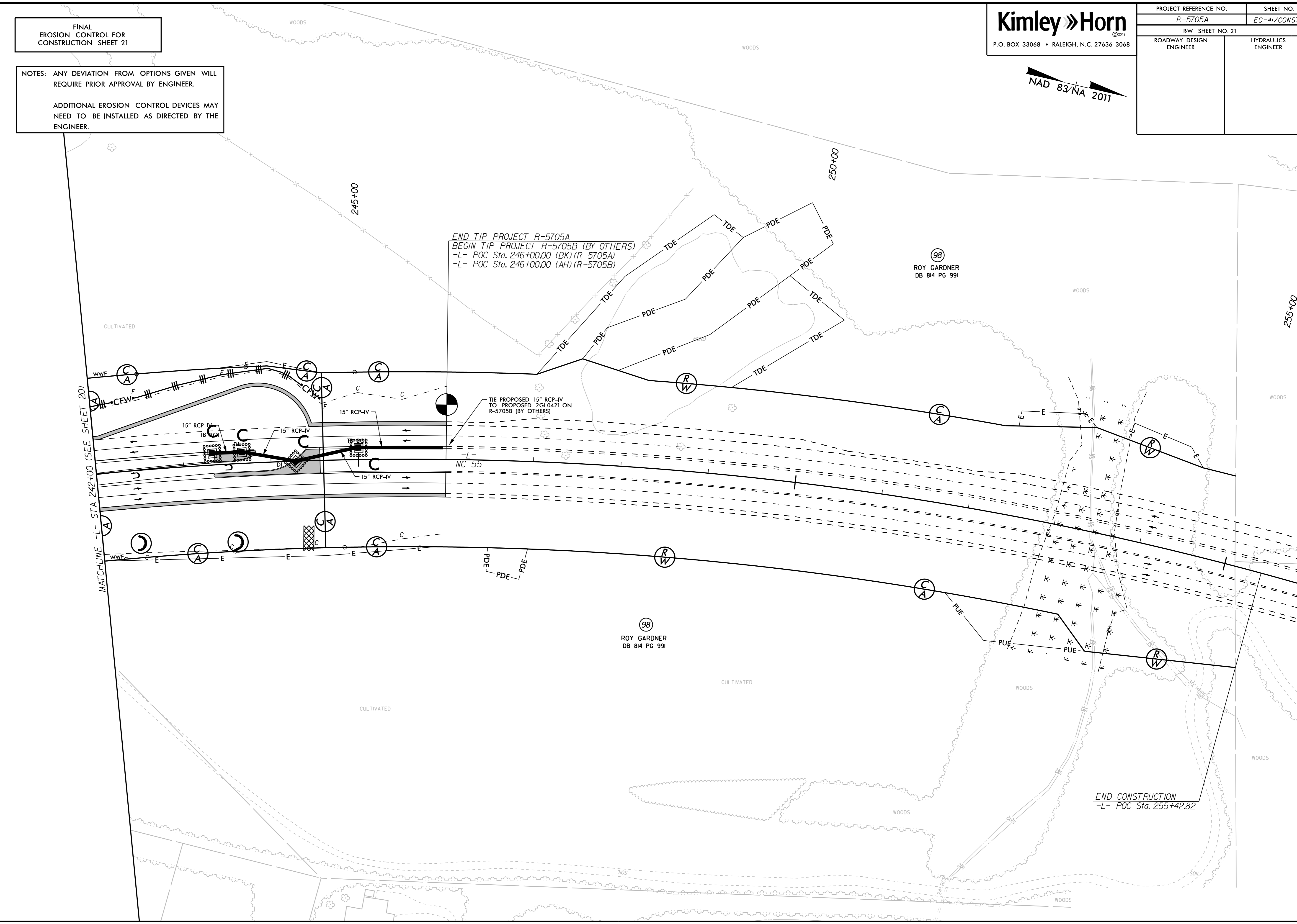
ADDITIONAL EROSION CONTROL DEVICES MAY  
NEED TO BE INSTALLED AS DIRECTED BY THE  
ENGINEER.

**Kimley » Horn**  
P.O. BOX 33068 • RALEIGH, N.C. 27636-3068

PROJECT REFERENCE NO. R-5705A	SHEET NO. EC-41/CONST.21
RW SHEET NO. 21	
ROADWAY DESIGN ENGINEER	HYDRAULICS ENGINEER



REVISIONS



END TIP PROJECT R-5705A  
BEGIN TIP PROJECT R-5705B (BY OTHERS)  
-L- POC Sta. 246+00.00 (BK) (R-5705A)  
-L- POC Sta. 246+00.00 (AH) (R-5705B)

TIE PROPOSED 15" RCP-IV  
TO PROPOSED 2610421 ON  
R-5705B (BY OTHERS)

END CONSTRUCTION  
-L- POC Sta. 255+42.82

98  
ROY GARDNER  
DB 814 PG 991

98  
ROY GARDNER  
DB 814 PG 991