

5/14/99

FINAL
EROSION CONTROL FOR
CONSTRUCTION SHEET 18

NOTES: ANY DEVIATION FROM OPTIONS GIVEN WILL
REQUIRE PRIOR APPROVAL BY ENGINEER.

ADDITIONAL EROSION CONTROL DEVICES MAY
NEED TO BE INSTALLED AS DIRECTED BY THE
ENGINEER.

INSTALL MATTING FOR
EROSION CONTROL IN THE
PROPOSED DITCH LINE.
SEE SHEET EC-3 TO EC-3B
FOR STATION RANGES

| | | | |
|----------------------------------|--|-----------------------------|--|
| PROJECT REFERENCE NO. R-5705A | | SHEET NO. EC-38/CONST.18 | |
| RW SHEET NO. 18 | | | |
| ROADWAY DESIGN ENGINEER | | HYDRAULICS ENGINEER | |

Kimley & Horn
P.O. BOX 33068 • RALEIGH, N.C. 27636-3068

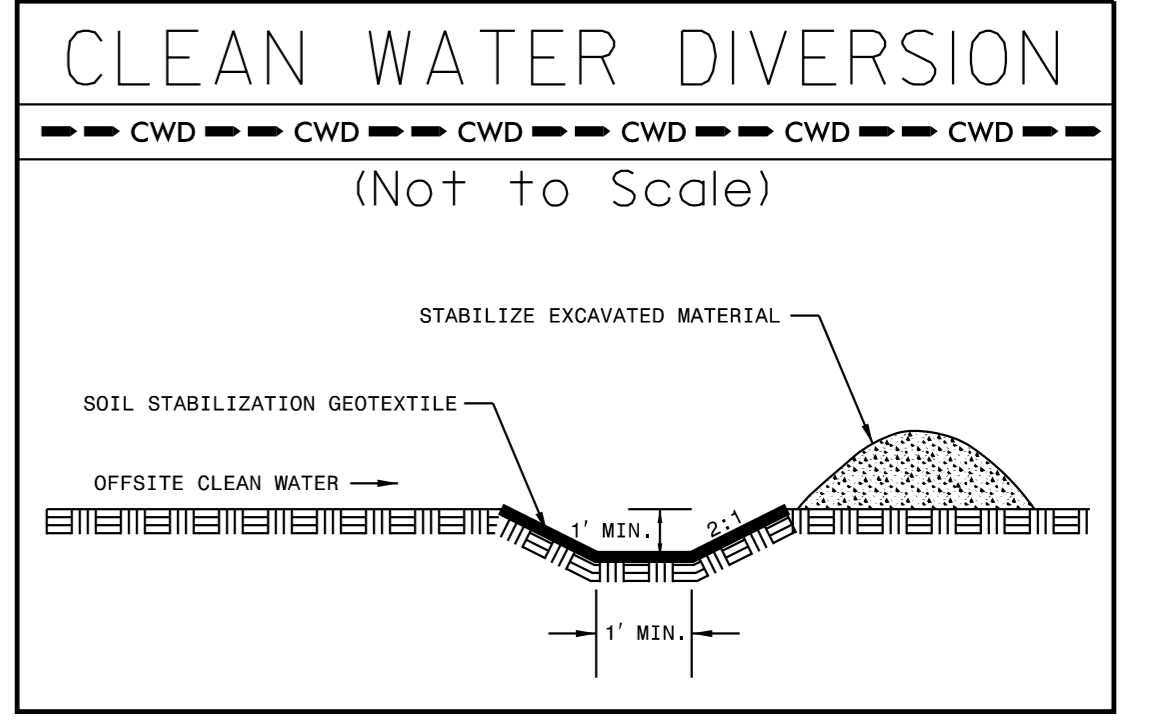
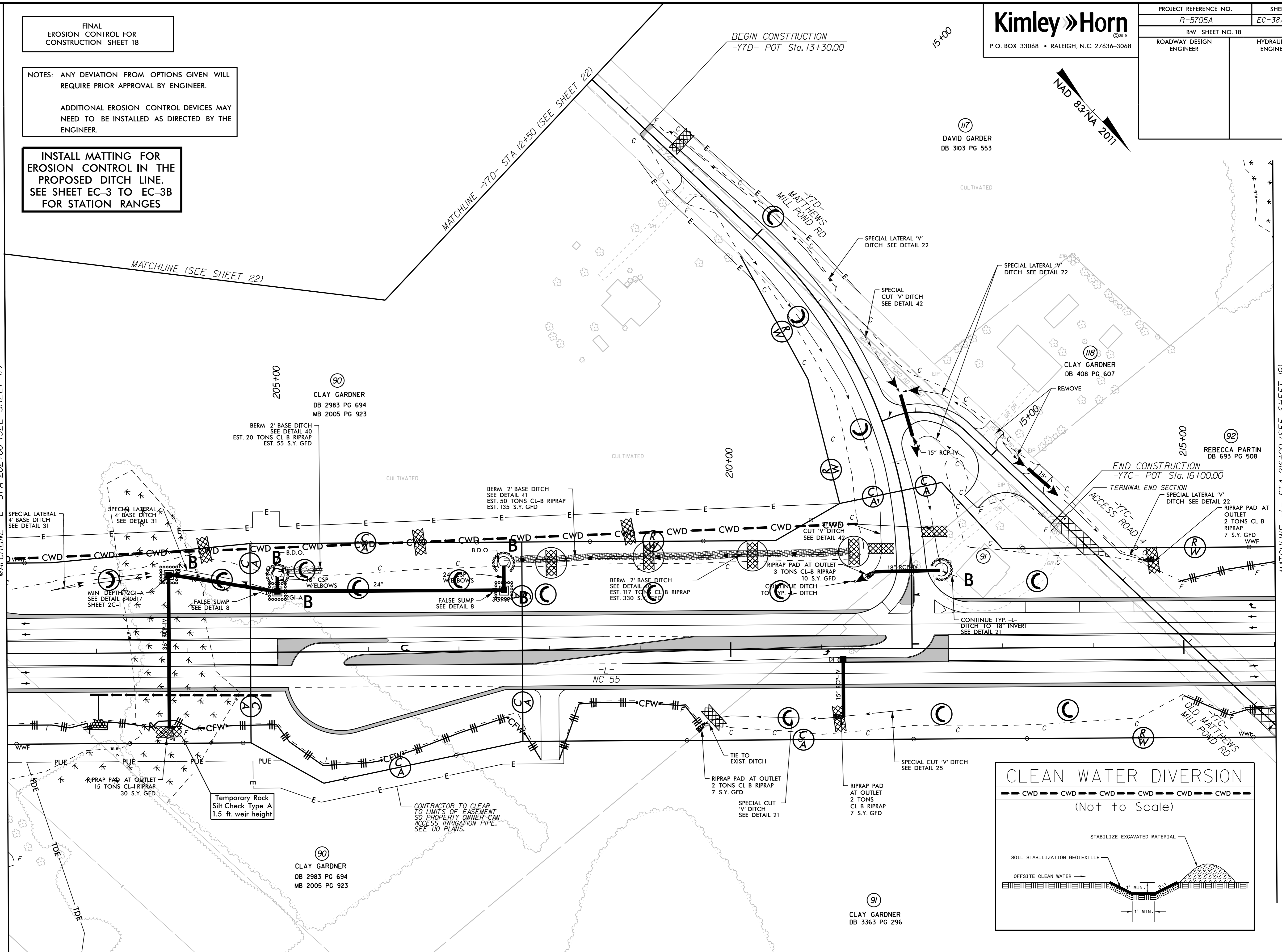
DAVID GARDNER
DB 3103 PG 553

NAD 83/NA 2011

REVISIONS

MATCHLINE -L- STA 202+00 (SEE SHEET 17)

MATCHLINE -L- STA 216+00 (SEE SHEET 19)



CONTRACTOR TO CLEAR
TO LIMITS OF EASEMENT
SO PROPERTY OWNER CAN
ACCESS IRRIGATION PIPE.
SEE UO PLANS.

Temporary Rock
Silt Check Type A
1.5 ft. weir height

RIPRAP PAD AT OUTLET
15 TONS CL-B RIPRAP
30 S.Y. GFD

RIPRAP PAD AT OUTLET
2 TONS CL-B RIPRAP
7 S.Y. GFD

RIPRAP PAD
AT OUTLET
2 TONS
CL-B RIPRAP
7 S.Y. GFD

RIPRAP PAD AT
OUTLET
2 TONS CL-B
RIPRAP
7 S.Y. GFD

90
CLAY GARDNER
DB 2983 PG 694
MB 2005 PG 923

91
CLAY GARDNER
DB 3363 PG 296

90
CLAY GARDNER
DB 2983 PG 694
MB 2005 PG 923

118
CLAY GARDNER
DB 408 PG 607

92
REBECCA PARTIN
DB 693 PG 508

SPECIAL LATERAL
4' BASE DITCH
SEE DETAIL 31

SPECIAL LATERAL
4' BASE DITCH
SEE DETAIL 31

FALSE SUMP
SEE DETAIL 8

FALSE SUMP
SEE DETAIL 8

BERM 2' BASE DITCH
SEE DETAIL 41
EST. 50 TONS CL-B RIPRAP
EST. 135 S.Y. GFD

RIPRAP PAD AT OUTLET
3 TONS CL-B RIPRAP
10 S.Y. GFD
CONTINUE DITCH
TO TYP. -L- DITCH

CONTINUE TYP. -L-
DITCH TO 18" INVERT
SEE DETAIL 21

END CONSTRUCTION
-Y7C- POT Sta. 16+00.00
TERMINAL END SECTION
SPECIAL LATERAL V'
DITCH SEE DETAIL 22

BEGIN CONSTRUCTION
-Y7D- POT Sta. 13+30.00

MATCHLINE (SEE SHEET 22)

MATCHLINE -Y7D- STA 12+50 (SEE SHEET 22)

15+00

205+00

210+00

215+00

NC 55

PUE

PUE

PUE

PUE

PUE

PUE

PUE

PUE

PUE

PUE

PUE

PUE

PUE

PUE

PUE

PUE

PUE

PUE

PUE

PUE

PUE

PUE

PUE

PUE

PUE

PUE

PUE

PUE

PUE

PUE

PUE

PUE

PUE

PUE

PUE

PUE

PUE

PUE

PUE

PUE

PUE

PUE