

**FINAL
EROSION CONTROL FOR
CONSTRUCTION SHEET 16**

NOTES: ANY DEVIATION FROM OPTIONS GIVEN WILL REQUIRE PRIOR APPROVAL BY ENGINEER.

ADDITIONAL EROSION CONTROL DEVICES MAY NEED TO BE INSTALLED AS DIRECTED BY THE ENGINEER.

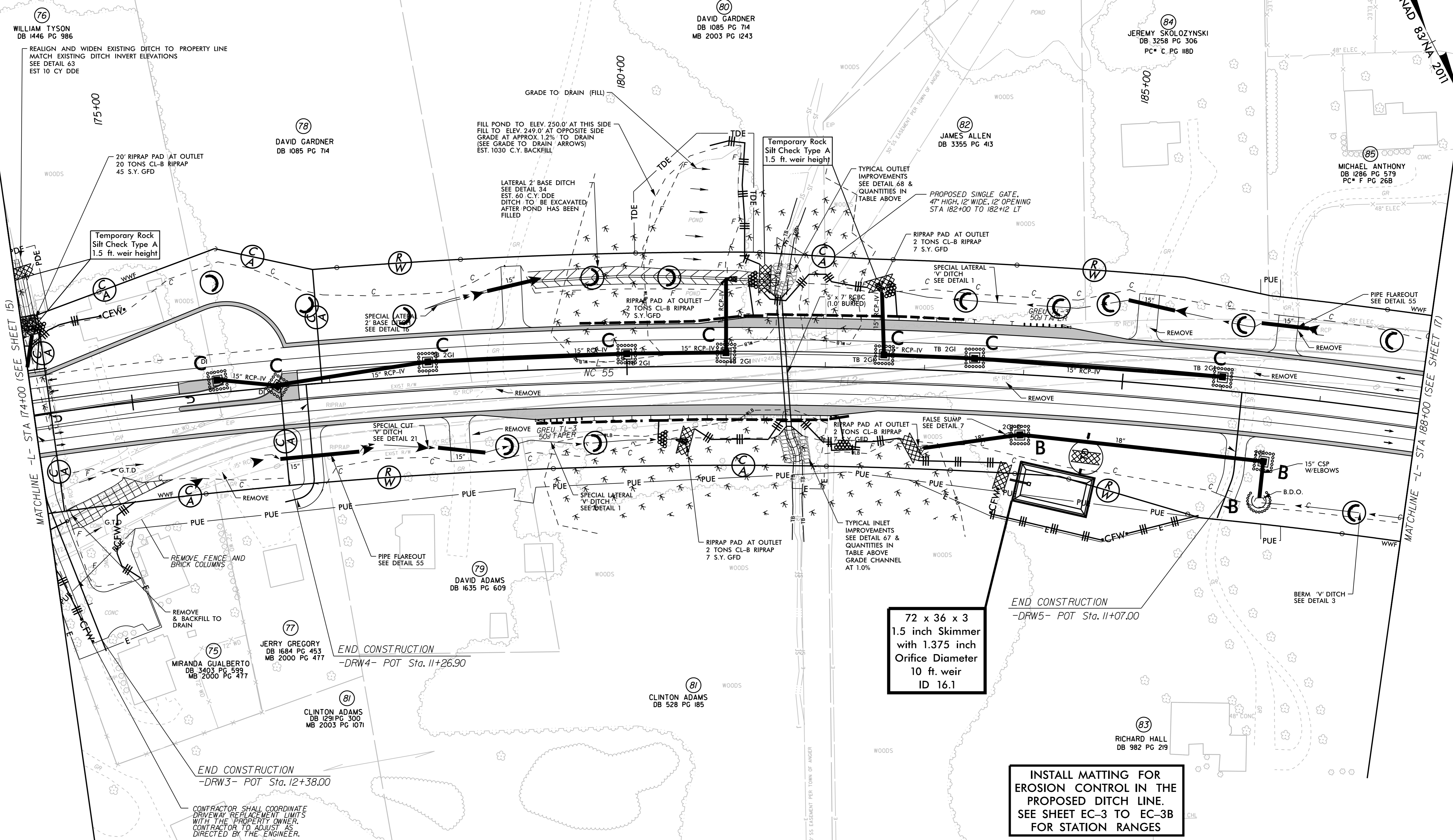
Kimley >> Horn

P.O. BOX 33068 • RALEIGH, N.C. 27636-3068

PROJECT REFERENCE NO. R-5705A	SHEET NO. EC-36/CONST.16
RW SHEET NO. 16	
ROADWAY DESIGN ENGINEER	HYDRAULICS ENGINEER

REVISIONS

NAD 83 NA 2011



**72 x 36 x 3
1.5 inch Skimmer
with 1.375 inch
Orifice Diameter
10 ft. weir
ID 16.1**

**END CONSTRUCTION
-DRW5- POT Sta. 11+07.00**

**INSTALL MATTING FOR
EROSION CONTROL IN THE
PROPOSED DITCH LINE.
SEE SHEET EC-3 TO EC-3B
FOR STATION RANGES**

**CONTRACTOR SHALL COORDINATE
DRIVEWAY REPLACEMENT LIMITS
WITH THE PROPERTY OWNER.
CONTRACTOR TO ADJUST AS
DIRECTED BY THE ENGINEER.**