

5/14/99

FINAL
EROSION CONTROL FOR
CONSTRUCTION SHEET 15

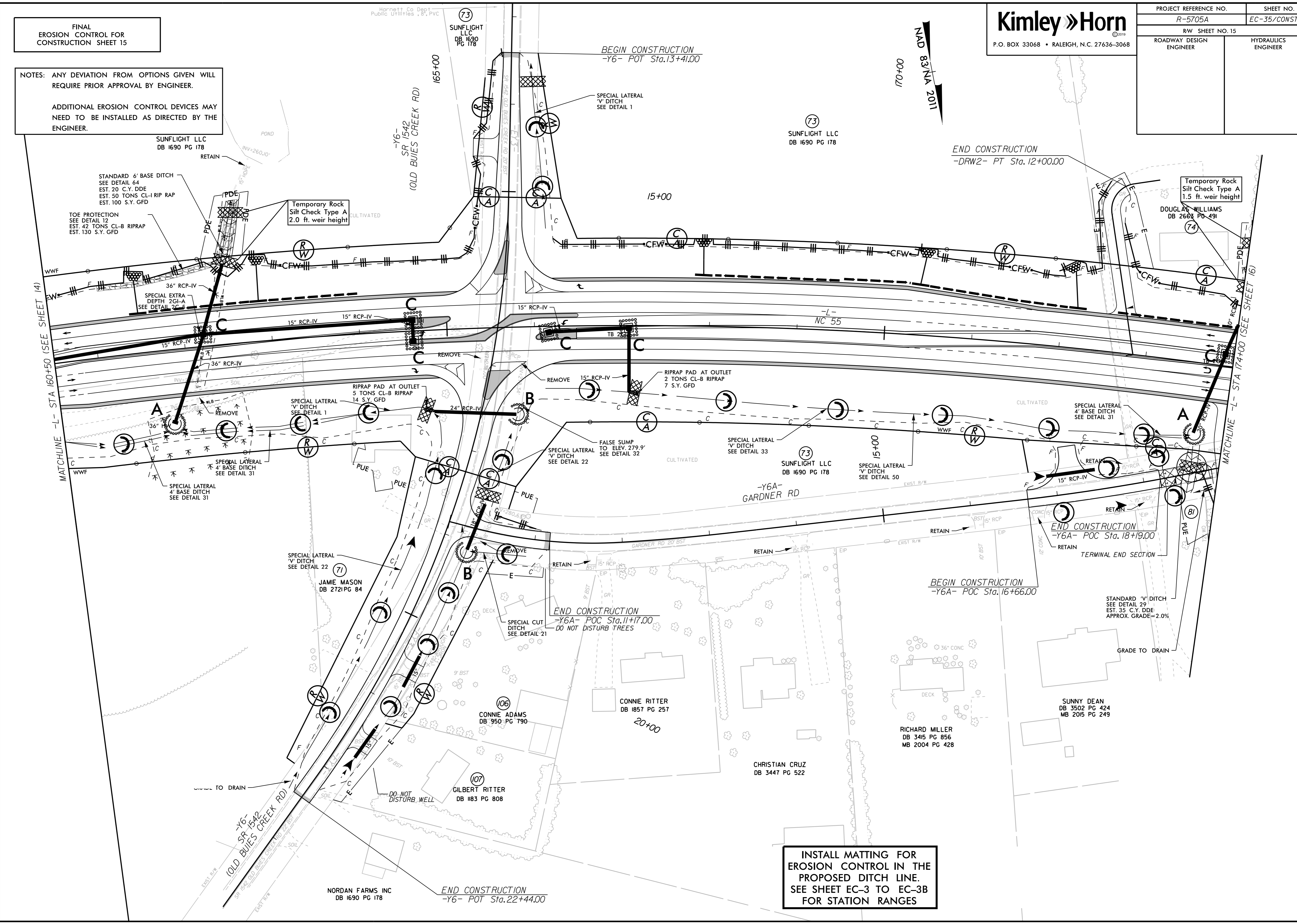
NOTES: ANY DEVIATION FROM OPTIONS GIVEN WILL
REQUIRE PRIOR APPROVAL BY ENGINEER.

ADDITIONAL EROSION CONTROL DEVICES MAY
NEED TO BE INSTALLED AS DIRECTED BY THE
ENGINEER.

PROJECT REFERENCE NO. R-5705A		SHEET NO. EC-35/CONST.15	
RW SHEET NO. 15			
ROADWAY DESIGN ENGINEER		HYDRAULICS ENGINEER	

Kimley Horn
P.O. BOX 33068 • RALEIGH, N.C. 27636-3068

NAD 83/NA 2011
170+00



REVISIONS

INSTALL MATTING FOR
EROSION CONTROL IN THE
PROPOSED DITCH LINE.
SEE SHEET EC-3 TO EC-3B
FOR STATION RANGES