

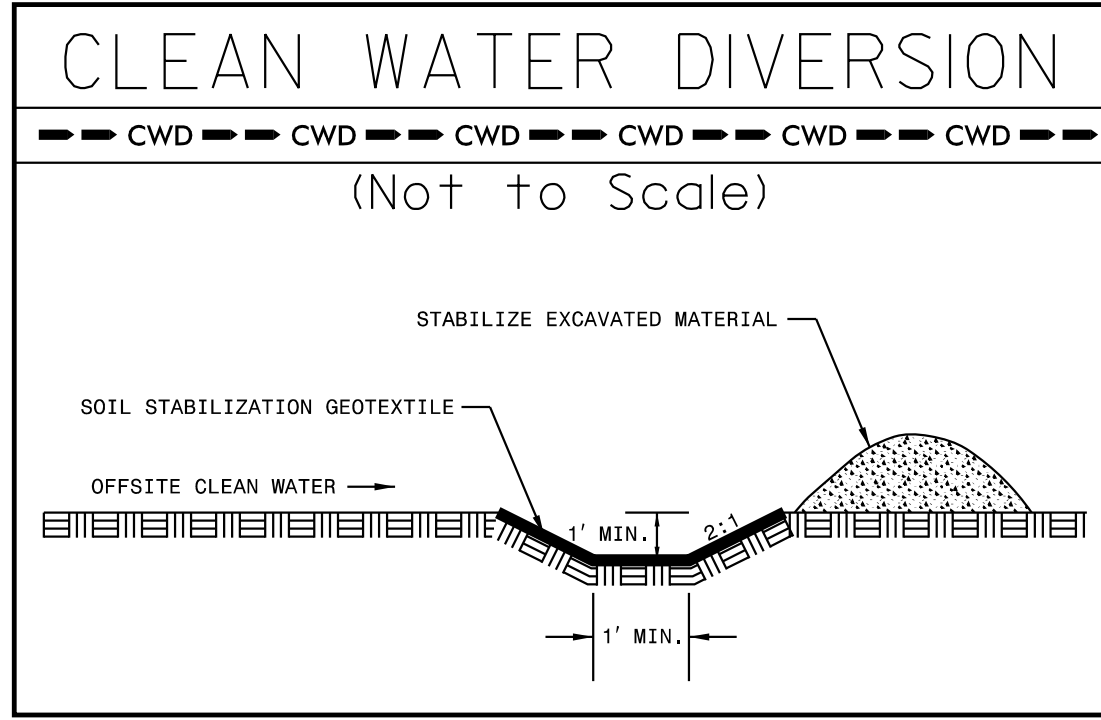
| | |
|-------------------------|---------------------|
| PROJECT REFERENCE NO. | SHEET NO. |
| R-5705A | EC-34/CONST.14 |
| RW SHEET NO. 14 | |
| ROADWAY DESIGN ENGINEER | HYDRAULICS ENGINEER |

Kimley » Horn
 P.O. BOX 33068 • RALEIGH, N.C. 27636-3068

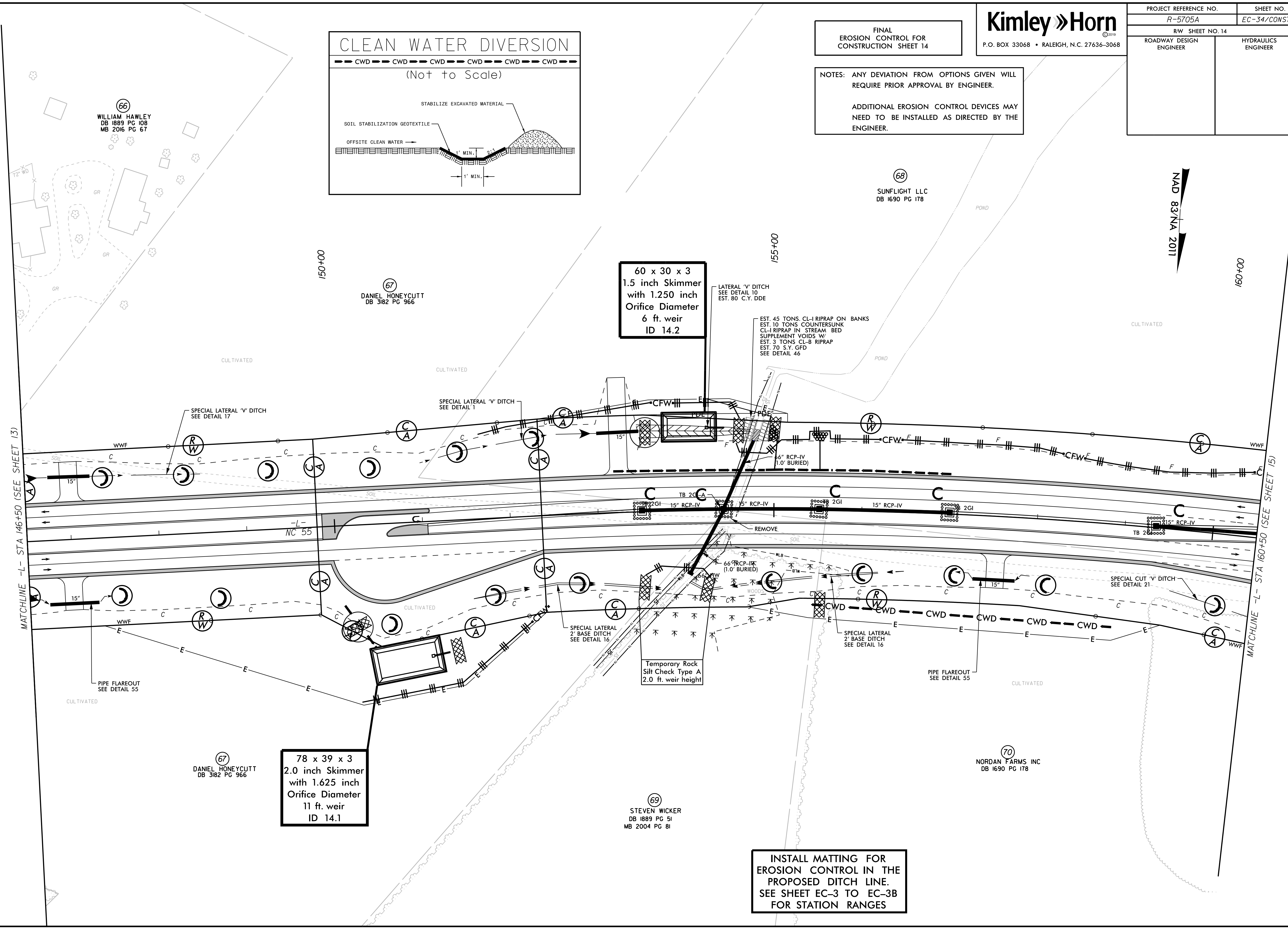
FINAL
 EROSION CONTROL FOR
 CONSTRUCTION SHEET 14

NOTES: ANY DEVIATION FROM OPTIONS GIVEN WILL REQUIRE PRIOR APPROVAL BY ENGINEER.

ADDITIONAL EROSION CONTROL DEVICES MAY NEED TO BE INSTALLED AS DIRECTED BY THE ENGINEER.



REVISIONS



**60 x 30 x 3
 1.5 inch Skimmer
 with 1.250 inch
 Orifice Diameter
 6 ft. weir
 ID 14.2**

**78 x 39 x 3
 2.0 inch Skimmer
 with 1.625 inch
 Orifice Diameter
 11 ft. weir
 ID 14.1**

**INSTALL MATTING FOR
 EROSION CONTROL IN THE
 PROPOSED DITCH LINE.
 SEE SHEET EC-3 TO EC-3B
 FOR STATION RANGES**

MATCHLINE -L- STA 146+50 (SEE SHEET 13)

MATCHLINE -L- STA 160+50 (SEE SHEET 15)

66
 WILLIAM HAWLEY
 DB 1889 PG 108
 MB 2016 PG 67

67
 DANIEL HONEYCUTT
 DB 3182 PG 966

68
 SUNFLIGHT LLC
 DB 1690 PG 178

67
 DANIEL HONEYCUTT
 DB 3182 PG 966

69
 STEVEN WICKER
 DB 1889 PG 51
 MB 2004 PG 81

70
 NORDAN FARMS INC
 DB 1690 PG 178

NAD 83/NA 2011