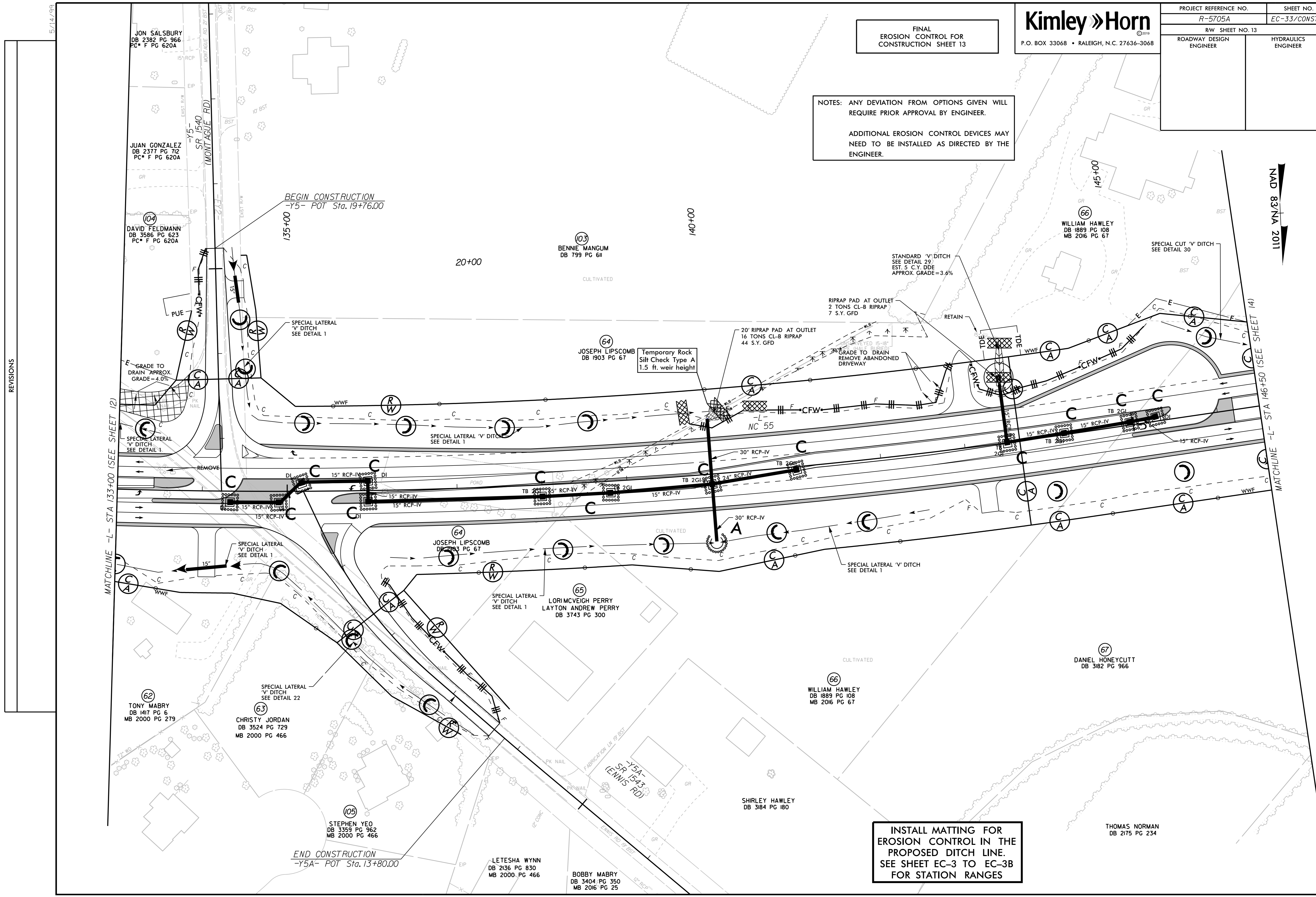


PROJECT REFERENCE NO. R-5705A	SHEET NO. EC-33/CONST.13
RW SHEET NO. 13	HYDRAULICS ENGINEER
ROADWAY DESIGN ENGINEER	

**FINAL  
EROSION CONTROL FOR  
CONSTRUCTION SHEET 13**

NOTES: ANY DEVIATION FROM OPTIONS GIVEN WILL REQUIRE PRIOR APPROVAL BY ENGINEER.

ADDITIONAL EROSION CONTROL DEVICES MAY NEED TO BE INSTALLED AS DIRECTED BY THE ENGINEER.



**INSTALL MATTING FOR  
EROSION CONTROL IN THE  
PROPOSED DITCH LINE.  
SEE SHEET EC-3 TO EC-3B  
FOR STATION RANGES**

NAD 83/NA 2011

REVISIONS

MATCHLINE -L- STA 133+00 (SEE SHEET 12)

MATCHLINE -L- STA 146+50 (SEE SHEET 14)

BEGIN CONSTRUCTION  
-Y5- POT Sta. 19+76.00

END CONSTRUCTION  
-Y5A- POT Sta. 13+80.00

JON SALSBUURY  
DB 2382 PG 966  
PC\* F PG 620A

JUAN GONZALEZ  
DB 2377 PG 712  
PC\* F PG 620A

DAVID FELDMANN  
DB 3586 PG 623  
PC\* F PG 620A

03  
BENNIE MANGUM  
DB 799 PG 611

64  
JOSEPH LIPSCOMB  
DB 1903 PG 67

65  
LORIMCVEIGH PERRY  
LAYTON ANDREW PERRY  
DB 3743 PG 300

62  
TONY MABRY  
DB 1417 PG 6  
MB 2000 PG 279

63  
CHRISTY JORDAN  
DB 3524 PG 729  
MB 2000 PG 466

105  
STEPHEN YEO  
DB 3359 PG 962  
MB 2000 PG 466

LETESHA WYNN  
DB 2136 PG 830  
MB 2000 PG 466

BOBBY MABRY  
DB 3404 PG 350  
MB 2016 PG 25

SHIRLEY HAWLEY  
DB 3184 PG 180

66  
WILLIAM HAWLEY  
DB 1889 PG 108  
MB 2016 PG 67

67  
DANIEL HONEYCUTT  
DB 3182 PG 966

66  
WILLIAM HAWLEY  
DB 1889 PG 108  
MB 2016 PG 67

THOMAS NORMAN  
DB 2175 PG 234