

5/14/99

FINAL
EROSION CONTROL FOR
CONSTRUCTION SHEET 10

NOTES: ANY DEVIATION FROM OPTIONS GIVEN WILL
REQUIRE PRIOR APPROVAL BY ENGINEER.

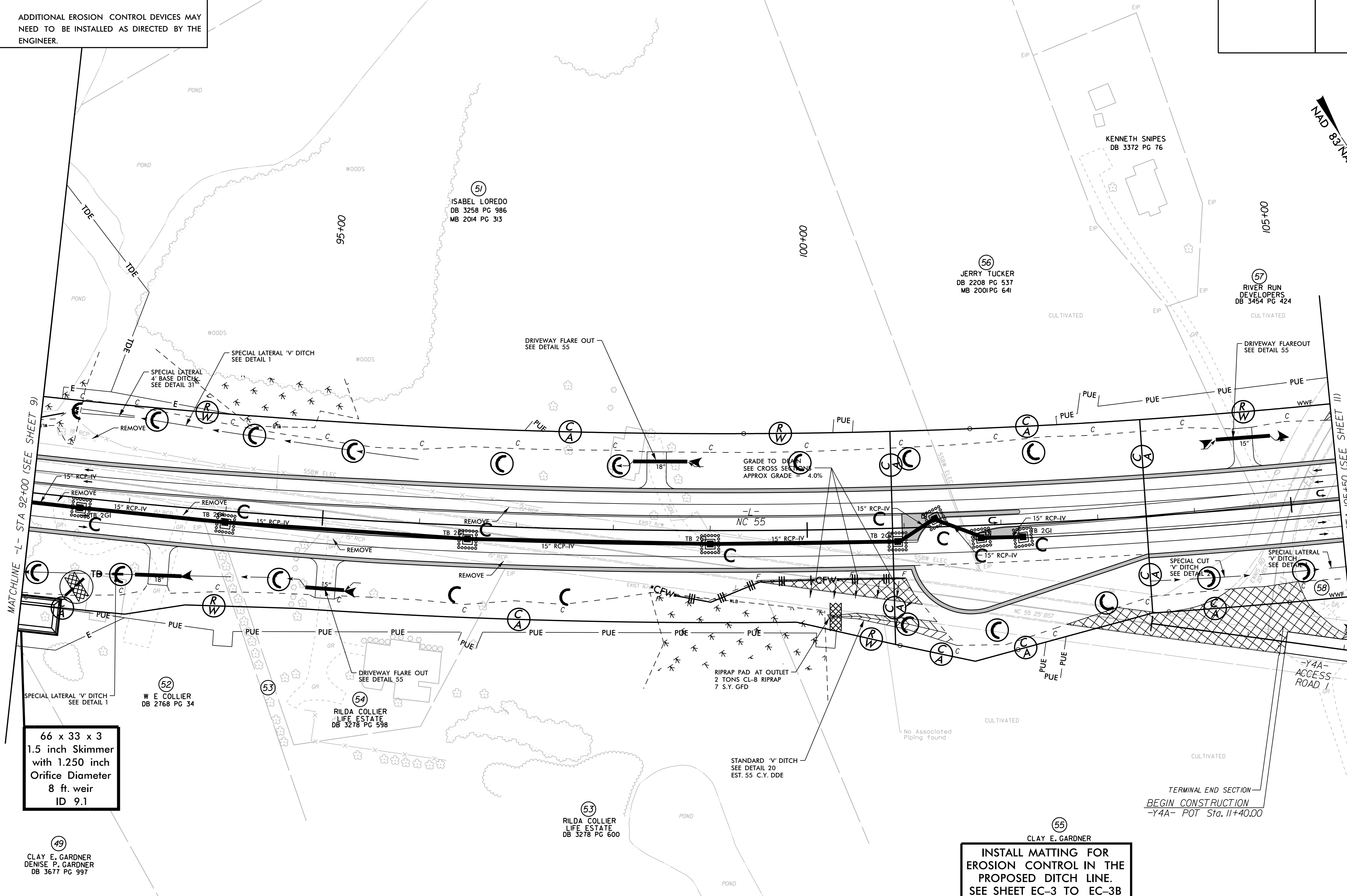
ADDITIONAL EROSION CONTROL DEVICES MAY
NEED TO BE INSTALLED AS DIRECTED BY THE
ENGINEER.

Kimley >> Horn

P.O. BOX 33068 • RALEIGH, N.C. 27636-3068

PROJECT REFERENCE NO. R-5705A	SHEET NO. EC-30/CONST.10
RW SHEET NO. 10	
ROADWAY DESIGN ENGINEER	HYDRAULICS ENGINEER

REVISIONS



66 x 33 x 3
1.5 inch Skimmer
with 1.250 inch
Orifice Diameter
8 ft. weir
ID 9.1

49
CLAY E. GARDNER
DENISE P. GARDNER
DB 3677 PG 997

52
W E COLLIER
DB 2768 PG 34

54
RILDA COLLIER
LIFE ESTATE
DB 3278 PG 598

53
RILDA COLLIER
LIFE ESTATE
DB 3278 PG 600

55
CLAY E. GARDNER
INSTALL MATTING FOR
EROSION CONTROL IN THE
PROPOSED DITCH LINE.
SEE SHEET EC-3 TO EC-3B
FOR STATION RANGES

TERMINAL END SECTION
BEGIN CONSTRUCTION
-Y4A- POT Sta. 11+40.00