

5/14/99

PROJECT REFERENCE NO. R-5705A	SHEET NO. EC-17A/CONST.17
ROADWAY DESIGN ENGINEER	HYDRAULICS ENGINEER

CULVERT CONSTRUCTION SEQUENCE STA. 198+61 -L-

PHASE I

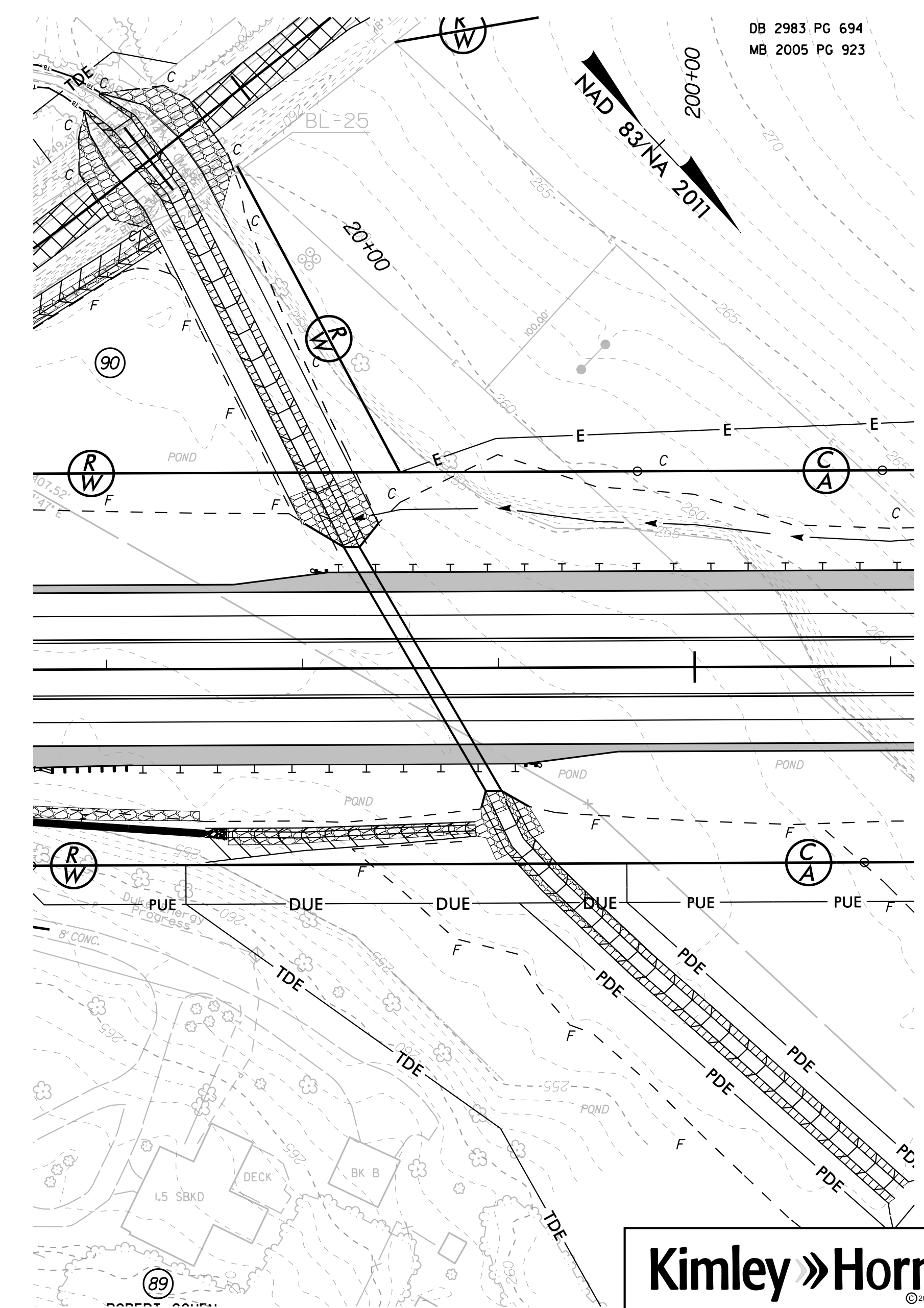
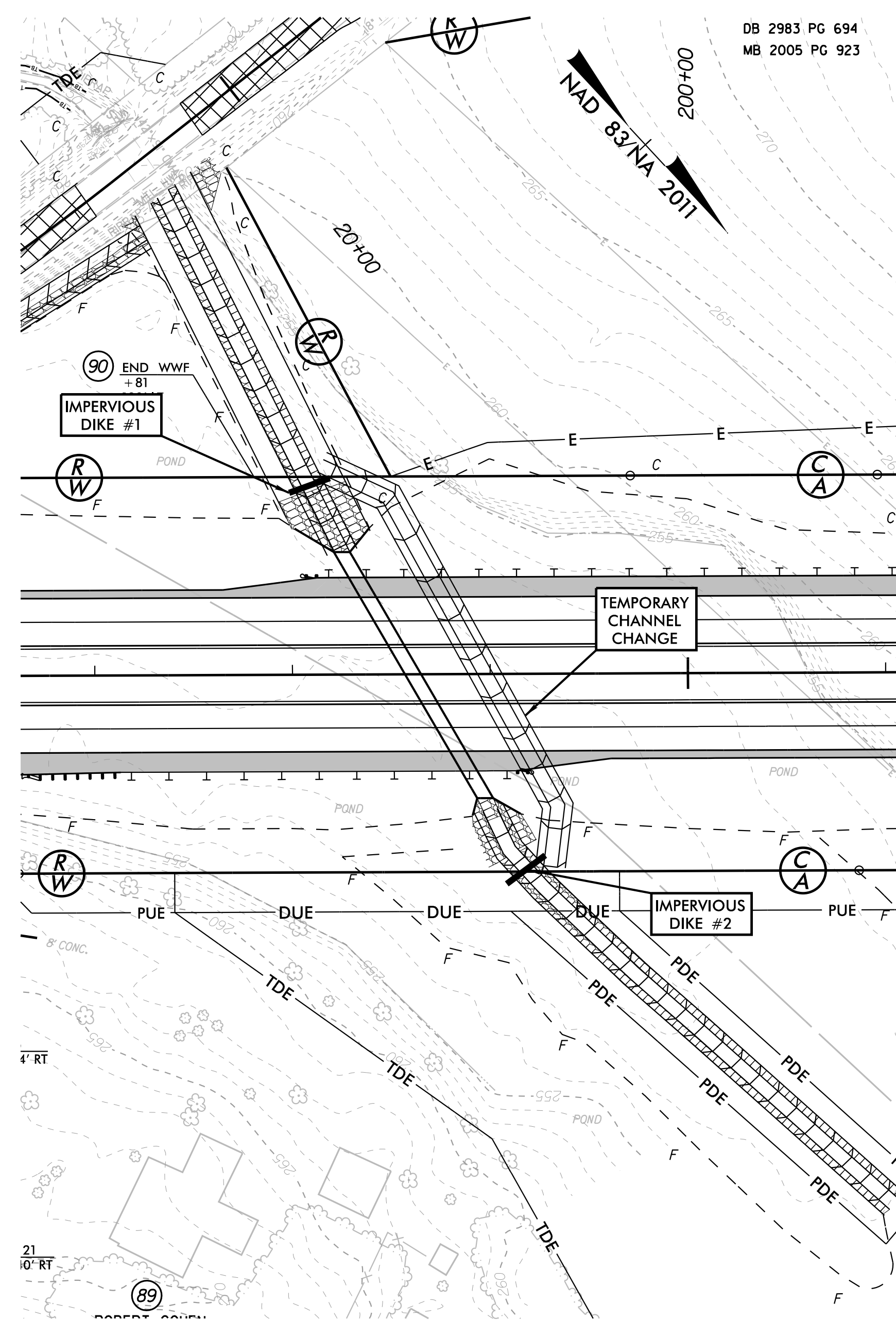
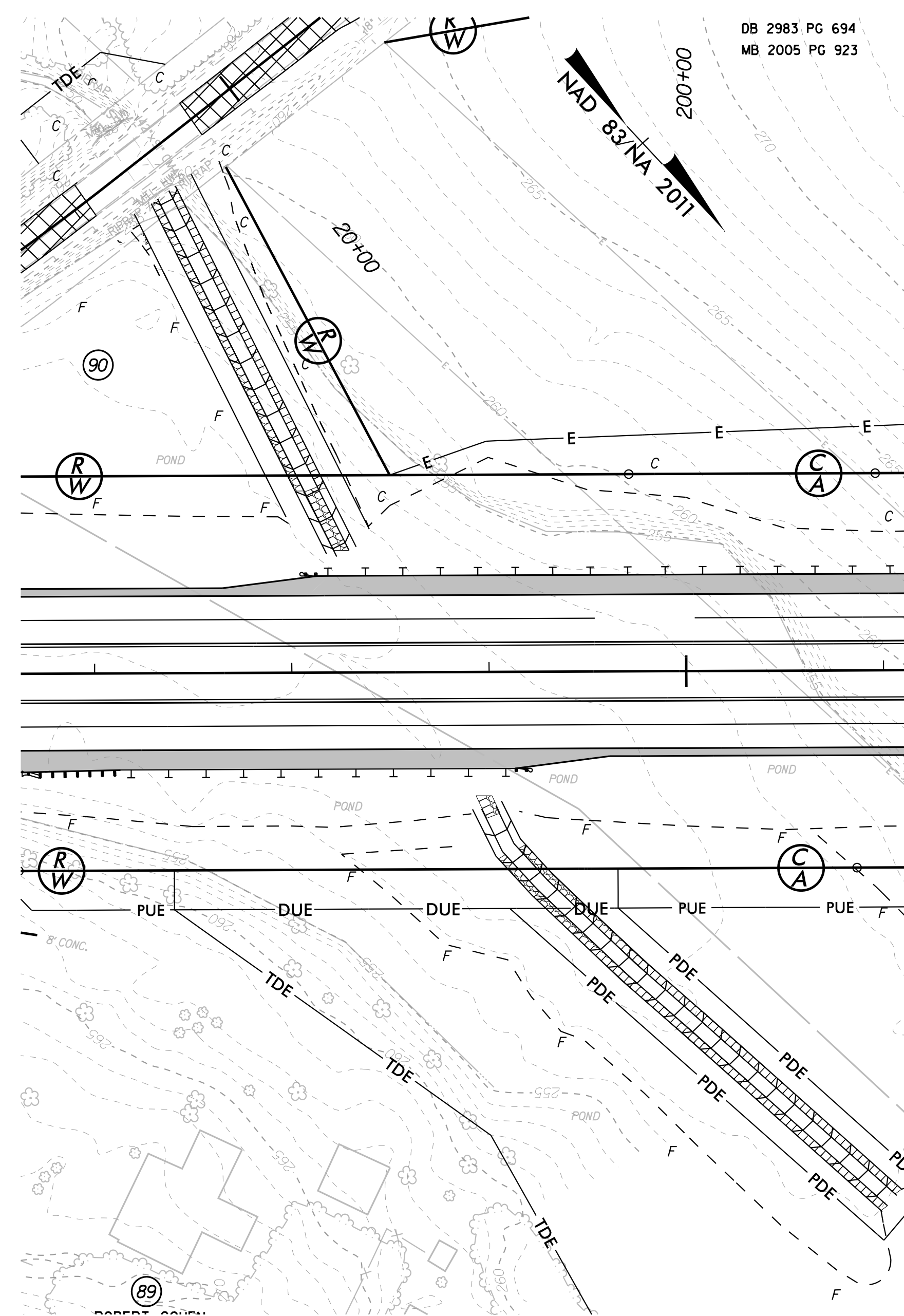
- 1.) DRAIN POND BY REMOVING EXISTING WEIR WALL ON UPSTREAM SIDE OF 42" X 91" CMAP (LEAVE 42" X 91" CMAP IN PLACE)
- 2.) UTILIZE SPECIAL STILLING BASIN(S) DURING CONSTRUCTION AS NEEDED TO DEWATER WORK SITE. (TYP.)
- 3.) CONSTRUCT PROPOSED DITCHES WITHIN DRAINED POND IN THE DRY.

PHASE II

- 1.) CONSTRUCT TEMPORARY CHANNEL CHANGE WITH LINER (7 FT BASE, 3 FT DEEP, 2:1 SIDE SLOPES). AND IMPERVIOUS DIKES 1 AND 2 TO DIVERT CHANNEL FLOW.
- 2.) CONSTRUCT PROPOSED 7'x7' RCBC.
- 3.) MAKE UPSTREAM AND DOWNSTREAM CHANNEL IMPROVEMENTS AND PLACE REQUIRED RIPRAP AND MATTING ON CHANNEL BANKS.

PHASE III

- 1.) REMOVE IMPERVIOUS DIKES 1 AND 2 AND REMOVE TEMPORARY CHANNEL CHANGE.
- 2.) REMOVE SPECIAL STILLING BASIN.
- 3.) STABILIZE DISTURBED AREA AND REMOVE ALL EROSION AND SEDIMENT CONTROL DEVICES AS DIRECTED.
- 4.) FINISH ROADWAY AND DRAINAGE CONSTRUCTION.
- 5.) ONCE TRAFFIC IS OPENED ON -L-, REMOVE EXISTING 42" X 91" CMAP DOWNSTREAM AND CONSTRUCT DOWNSTREAM CHANNEL IMPROVEMENTS (UTILIZE IMPERVIOUS DIKES AND SPECIAL STILLING BASIN AS NEEDED)



11/16/2022