
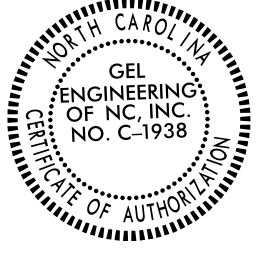

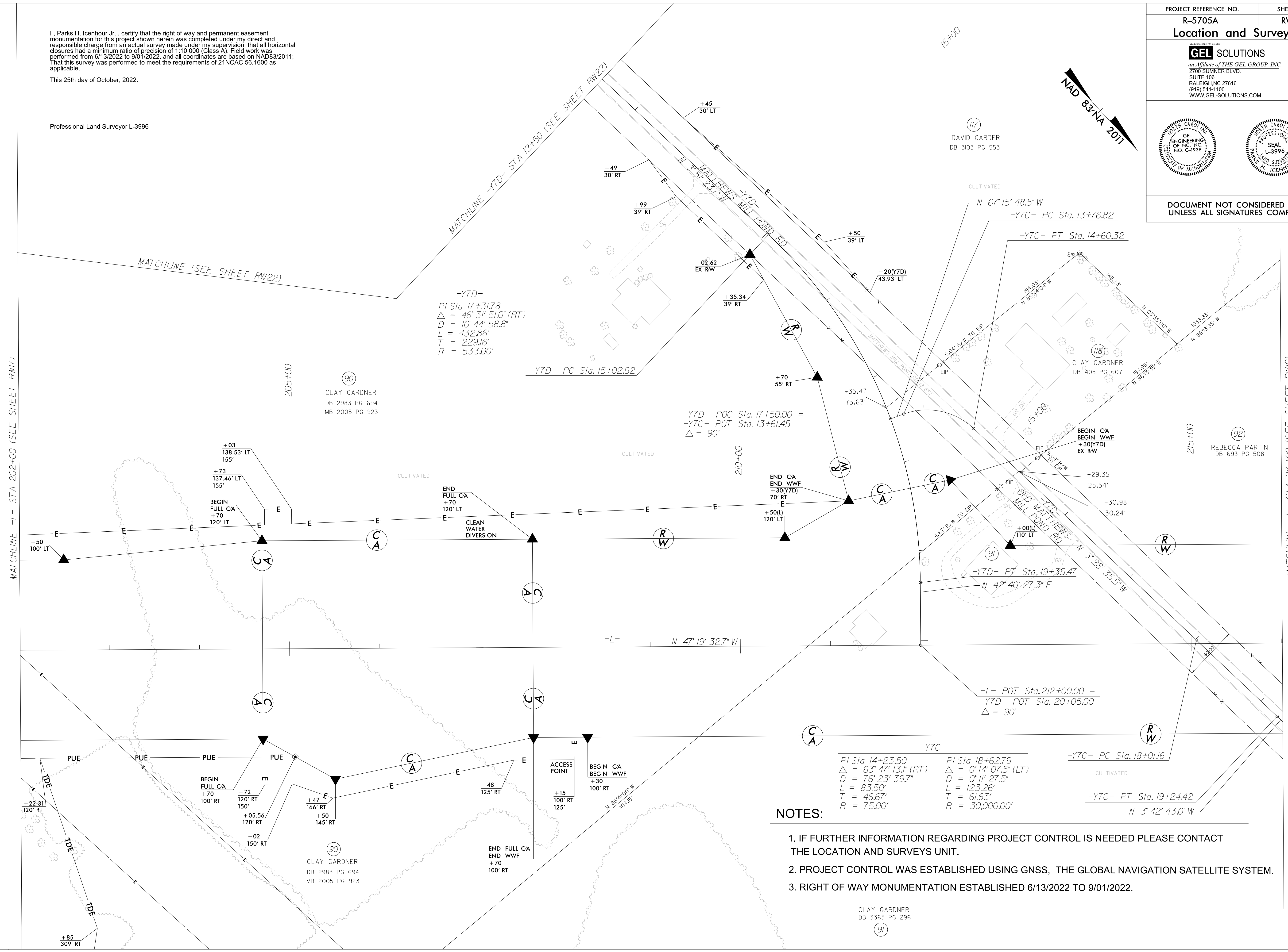
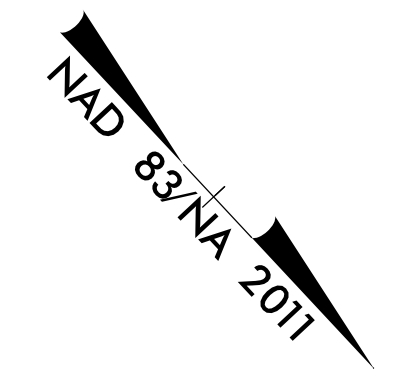


I, Parks H. Icenhour Jr., certify that the right of way and permanent easement monumentation for this project shown herein was completed under my direct and responsible charge from an actual survey made under my supervision; that all horizontal closures had a minimum ratio of precision of 1:10,000 (Class A). Field work was performed from 6/13/2022 to 9/01/2022, and all coordinates are based on NAD83/2011; That this survey was performed to meet the requirements of 21NCAC 56.1600 as applicable.

This 25th day of October, 2022.

Professional Land Surveyor L-3996

PROJECT REFERENCE NO.	SHEET NO.
R-5705A	RW18
<b>Location and Surveys</b>	
 <small>an Affiliate of THE GEL GROUP, INC.</small> <small>2700 SUMNER BLVD.</small> <small>SUITE 106</small> <small>RALEIGH, NC 27616</small> <small>(919) 844-1100</small> <small>WWW.GEL-SOLUTIONS.COM</small>	
 	
<b>DOCUMENT NOT CONSIDERED FINAL UNLESS ALL SIGNATURES COMPLETED</b>	



**-Y7D-**  
 PI Sta 17+31.78  
 $\Delta = 46^\circ 31' 51.0''$  (RT)  
 $D = 10^\circ 44' 58.8''$   
 $L = 432.86'$   
 $T = 229.16'$   
 $R = 533.00'$

**-Y7D- POC Sta. 17+50.00 =**  
**-Y7C- POT Sta. 13+61.45**  
 $\Delta = 90^\circ$

**-Y7C-**  
 PI Sta 14+23.50  
 $\Delta = 63^\circ 47' 13.1''$  (RT)  
 $D = 76^\circ 23' 39.7''$   
 $L = 83.50'$   
 $T = 46.67'$   
 $R = 75.00'$

PI Sta 18+62.79  
 $\Delta = 0^\circ 14' 07.5''$  (LT)  
 $D = 0^\circ 11' 27.5''$   
 $L = 123.26'$   
 $T = 61.63'$   
 $R = 30,000.00'$

**-Y7C- PC Sta. 18+01.16**  
**-Y7C- PT Sta. 19+24.42**  
 $N 3^\circ 42' 43.0'' W$

**-L- POT Sta. 212+00.00 =**  
**-Y7D- POT Sta. 20+05.00**  
 $\Delta = 90^\circ$

**NOTES:**

1. IF FURTHER INFORMATION REGARDING PROJECT CONTROL IS NEEDED PLEASE CONTACT THE LOCATION AND SURVEYS UNIT.
2. PROJECT CONTROL WAS ESTABLISHED USING GNSS, THE GLOBAL NAVIGATION SATELLITE SYSTEM.
3. RIGHT OF WAY MONUMENTATION ESTABLISHED 6/13/2022 TO 9/01/2022.

CLAY GARDNER  
DB 3363 PG 296

REVISIONS

C:\GEL\2022\1345\2022\R-5705A\_ROW\5705A\_Ls\_rw18.dgn  
C:\GEL\2022\1345\2022\R-5705A\_ROW\5705A\_Ls\_rw18.dgn  
AT DESKTOP-EPRI\SVP  
Jason Private