
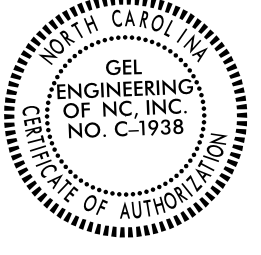
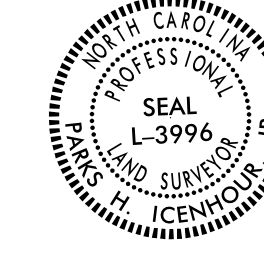
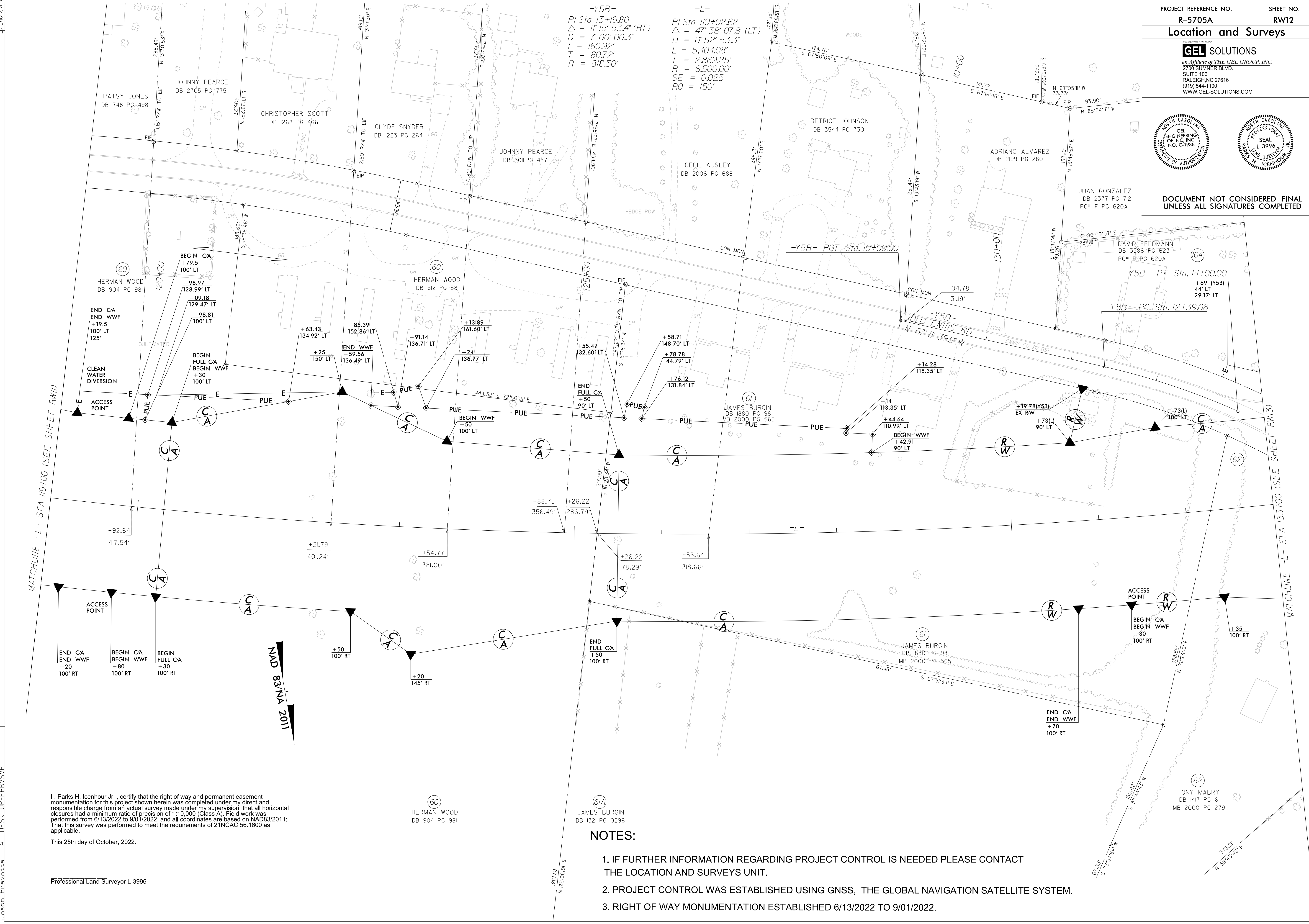


PROJECT REFERENCE NO.	SHEET NO.
R-5705A	RW12
Location and Surveys	
 <small>an Affiliate of THE GEL GROUP, INC.</small> 2700 SUMNER BLVD. SUITE 106 RALEIGH, NC 27616 (919) 544-1100 WWW.GEL-SOLUTIONS.COM	
	
DOCUMENT NOT CONSIDERED FINAL UNLESS ALL SIGNATURES COMPLETED	



-Y5B-
 PI Sta 13+19.80
 $\Delta = 11^{\circ}15'53.4\"$ (RT)
 $D = 7^{\circ}00'00.3\"$
 $L = 160.92'$
 $T = 80.72'$
 $R = 818.50'$

-L-
 PI Sta 119+02.62
 $\Delta = 47^{\circ}38'07.8\"$ (LT)
 $D = 0^{\circ}52'53.3\"$
 $L = 5,404.08'$
 $T = 2,869.25'$
 $R = 6,500.00'$
 $SE = 0.025$
 $RO = 150'$

REVISIONS

MATCHLINE -L- STA 119+00 (SEE SHEET RW11)

MATCHLINE -L- STA 133+00 (SEE SHEET RW13)

NAD 83/NA 2011

I, Parks H. Icenhour Jr., certify that the right of way and permanent easement monumentation for this project shown herein was completed under my direct and responsible charge from an actual survey made under my supervision; that all horizontal closures had a minimum ratio of precision of 1:10,000 (Class A). Field work was performed from 6/13/2022 to 9/01/2022, and all coordinates are based on NAD83/2011; That this survey was performed to meet the requirements of 21NCAC 56.1600 as applicable.

This 25th day of October, 2022.

Professional Land Surveyor L-3996

NOTES:

1. IF FURTHER INFORMATION REGARDING PROJECT CONTROL IS NEEDED PLEASE CONTACT THE LOCATION AND SURVEYS UNIT.
2. PROJECT CONTROL WAS ESTABLISHED USING GNSS, THE GLOBAL NAVIGATION SATELLITE SYSTEM.
3. RIGHT OF WAY MONUMENTATION ESTABLISHED 6/13/2022 TO 9/01/2022.

24-OCT-2022 13:47 2022-R-5705A_ROW-V-5705.rw.sheets\F5705A.Ls.rw12.dgn
 610618
 2022-10-25 10:54:16
 AT DESKTOP-EPRI\SVP
 JASON P. EVANS