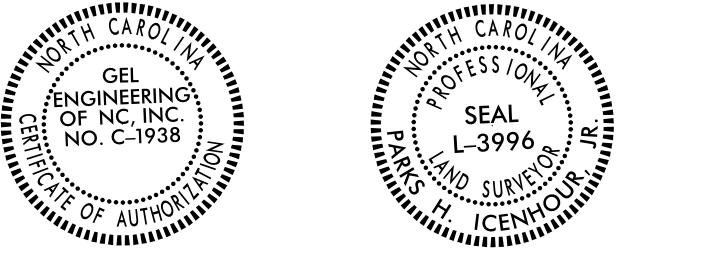


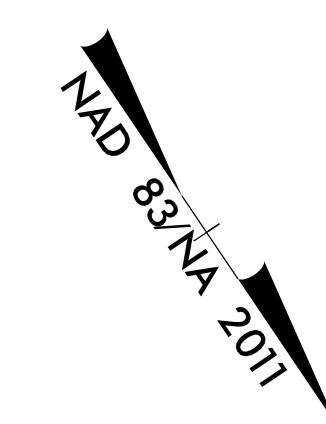
Location and Surveys

GEL SOLUTIONS an Affiliate of THE GEL GROUP, INC. 2700 SUMNER BLVD. SUITE 106 RALEIGH, NC 27616 (919) 544-1100 WWW.GEL-SOLUTIONS.COM



DOCUMENT NOT CONSIDERED FINAL UNLESS ALL SIGNATURES COMPLETED

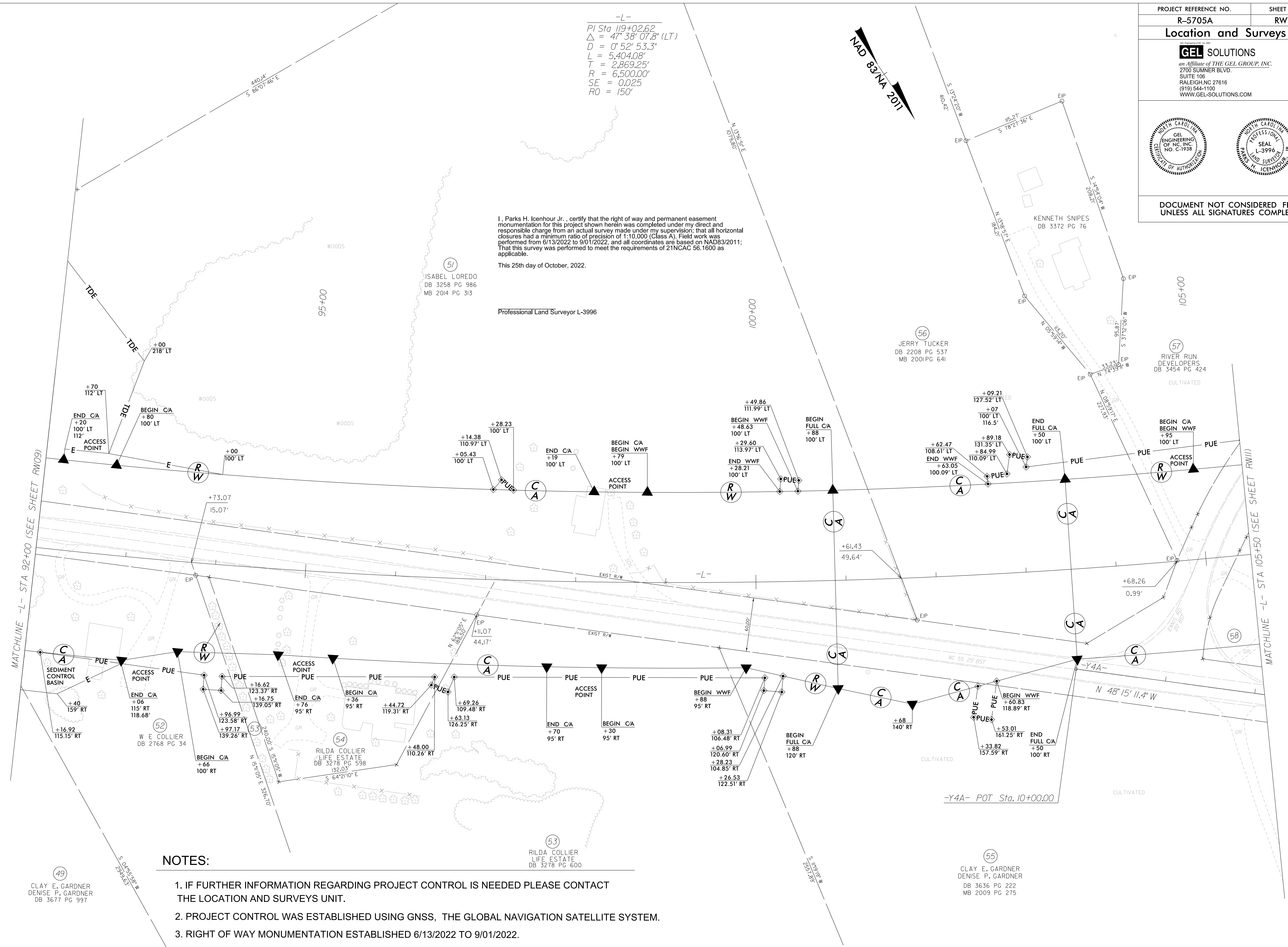
-L- PI Sta 119+02.62 Δ = 47° 38' 07.8" (LT) D = 0° 52' 53.3" L = 5,404.08' T = 2,869.25' R = 6,500.00' SE = 0.025 RO = 150'



I, Parks H. Icenhour Jr., certify that the right of way and permanent easement monumentation for this project shown herein was completed under my direct and responsible charge from an actual survey made under my supervision; that all horizontal closures had a minimum ratio of precision of 1:10,000 (Class A). Field work was performed from 6/13/2022 to 9/01/2022, and all coordinates are based on NAD83/2011; That this survey was performed to meet the requirements of 21NCAC 56.1600 as applicable.

This 25th day of October, 2022.

Professional Land Surveyor L-3996



REVISIONS

NOTES:

- 1. IF FURTHER INFORMATION REGARDING PROJECT CONTROL IS NEEDED PLEASE CONTACT THE LOCATION AND SURVEYS UNIT.
2. PROJECT CONTROL WAS ESTABLISHED USING GNSS, THE GLOBAL NAVIGATION SATELLITE SYSTEM.
3. RIGHT OF WAY MONUMENTATION ESTABLISHED 6/13/2022 TO 9/01/2022.

24-OCT-2022 14:36 C:\GEL\Projects\2022\R-5705A_ROW_V=5705.r.w.sheets\R5705A_Ls_rw10.dgn AT DESKTOP-ERRYSVF Jason Private