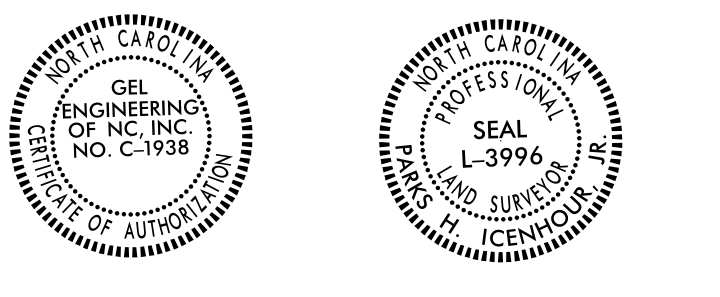


Location and Surveys

GEL SOLUTIONS
an Affiliate of THE GEL GROUP, INC.
2700 SUMNER BLVD.
SUITE 106
RALEIGH, NC 27616
(919) 544-1100
WWW.GEL-SOLUTIONS.COM

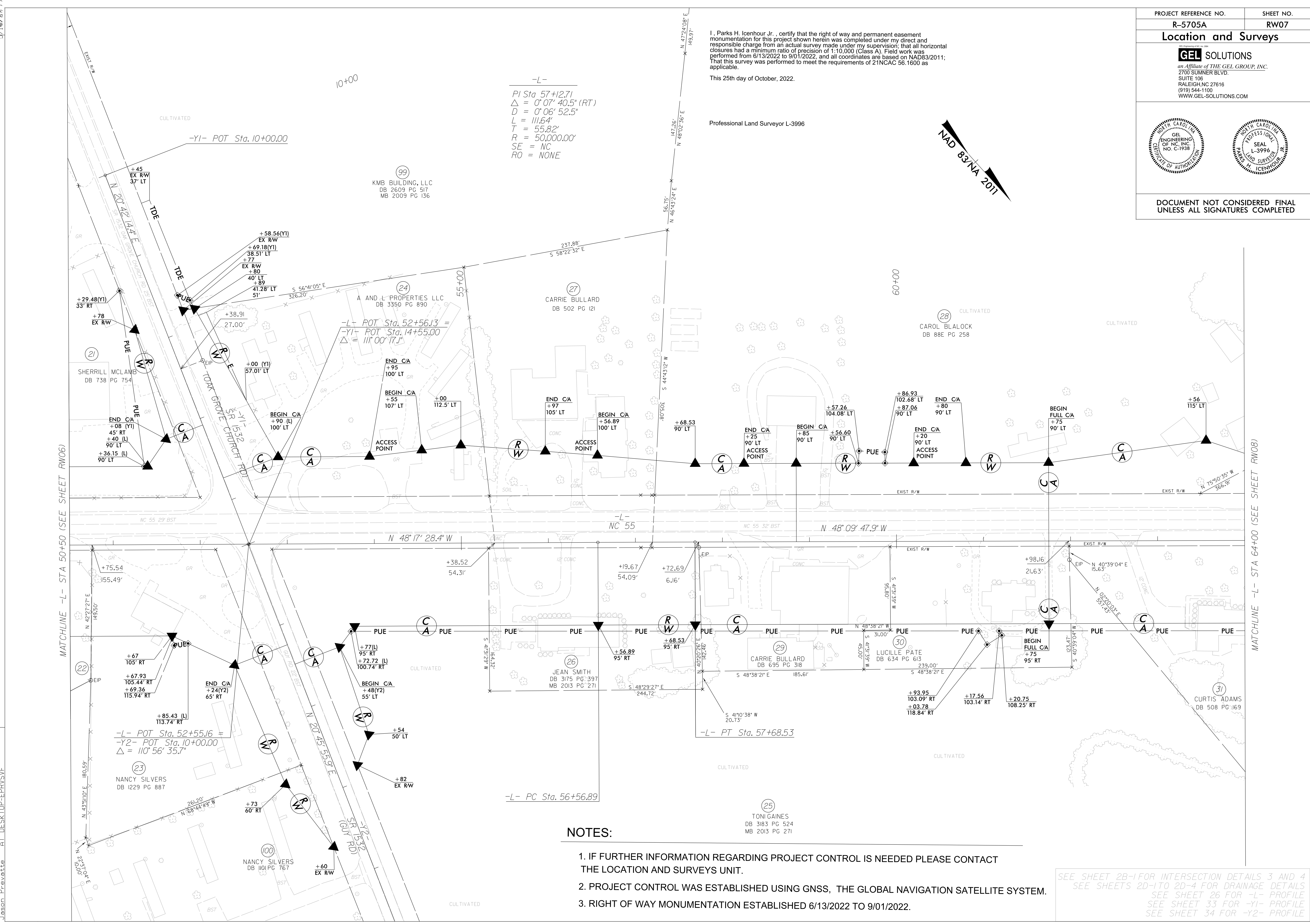


DOCUMENT NOT CONSIDERED FINAL
UNLESS ALL SIGNATURES COMPLETED

I, Parks H. Icenhour Jr., certify that the right of way and permanent easement monumentation for this project shown herein was completed under my direct and responsible charge from an actual survey made under my supervision; that all horizontal closures had a minimum ratio of precision of 1:10,000 (Class A). Field work was performed from 6/13/2022 to 9/01/2022, and all coordinates are based on NAD83/2011; That this survey was performed to meet the requirements of 21NCAC 56.1600 as applicable.

This 25th day of October, 2022.

Professional Land Surveyor L-3996



-L-
PI Sta 57+12.71
 $\Delta = 0^{\circ} 07' 40.5''$ (RT)
D = 0' 06' 52.5"
L = 111.64'
T = 55.82'
R = 50,000.00'
SE = NC
RO = NONE

-L- POT Sta. 52+56.13 =
-Y1- POT Sta. 14+55.00
 $\Delta = 111^{\circ} 00' 17.1''$

-L- POT Sta. 52+55.16 =
-Y2- POT Sta. 10+00.00
 $\Delta = 110^{\circ} 56' 35.7''$

-L- PC Sta. 56+56.89

-L- PT Sta. 57+68.53

NOTES:

1. IF FURTHER INFORMATION REGARDING PROJECT CONTROL IS NEEDED PLEASE CONTACT THE LOCATION AND SURVEYS UNIT.
2. PROJECT CONTROL WAS ESTABLISHED USING GNSS, THE GLOBAL NAVIGATION SATELLITE SYSTEM.
3. RIGHT OF WAY MONUMENTATION ESTABLISHED 6/13/2022 TO 9/01/2022.

SEE SHEET 2B-1 FOR INTERSECTION DETAILS 3 AND 4
SEE SHEETS 2D-1 TO 2D-4 FOR DRAINAGE DETAILS
SEE SHEET 26 FOR -L- PROFILE
SEE SHEET 33 FOR -Y1- PROFILE
SEE SHEET 34 FOR -Y2- PROFILE

REVISIONS

24-OCT-2022 13:41 2022-R-5705A-RW07.r.w.sheets\F5705A.Ls.rw07.dgn
 C:\GEL\Projects\2022\R-5705A-RW07.r.w.sheets\F5705A.Ls.rw07.dgn
 Jason Private