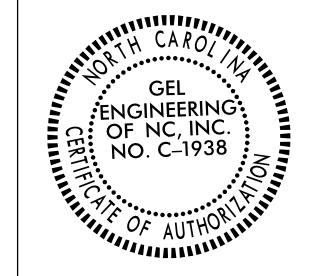


6/2/09

PROJECT REFERENCE NO. R-5705A SHEET NO. RW04

Location and Surveys

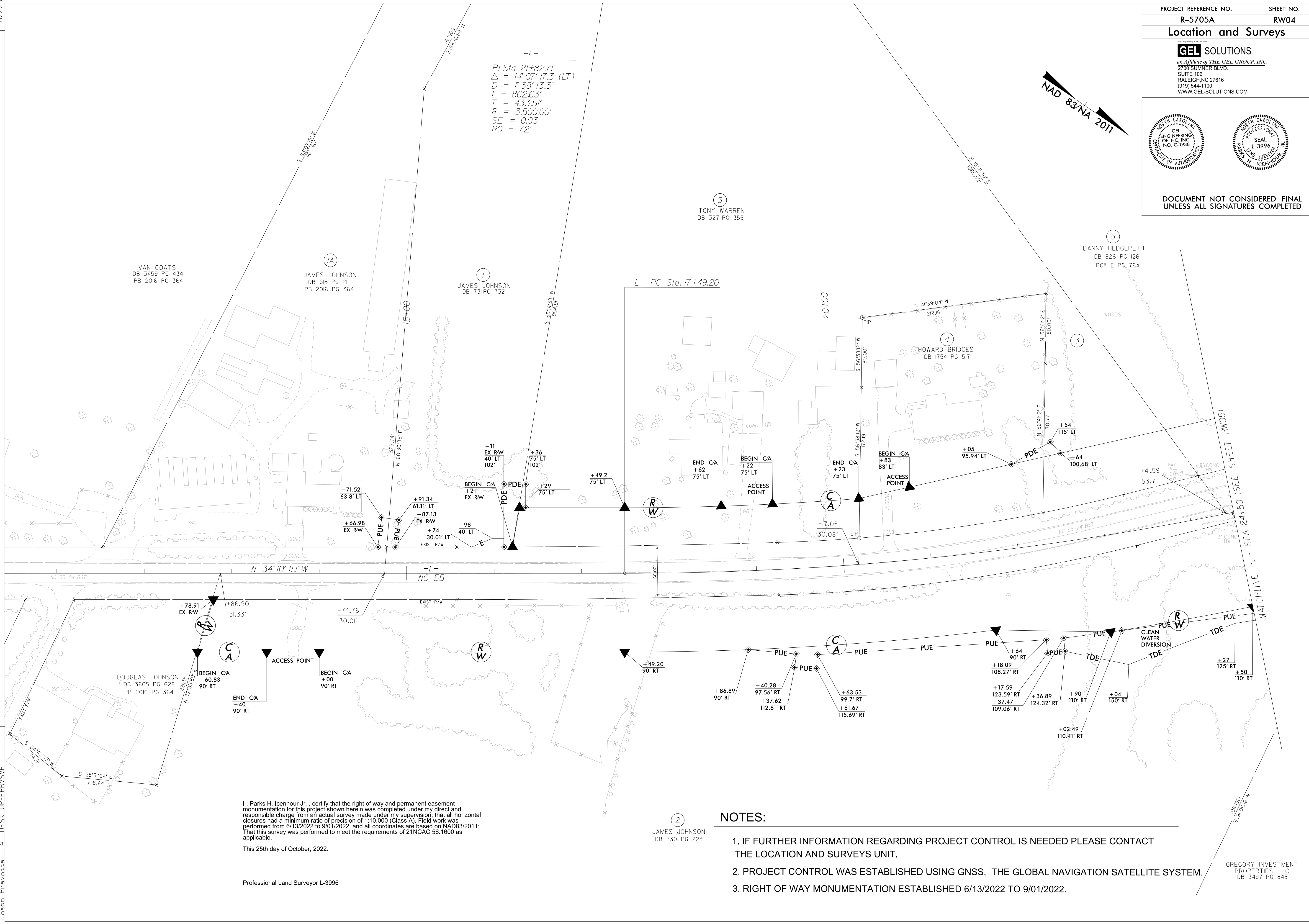
GEL SOLUTIONS
an Affiliate of THE GEL GROUP, INC.
2700 SUMNER BLVD.
SUITE 106
RALEIGH, NC 27616
(919) 544-1100
WWW.GEL-SOLUTIONS.COM



DOCUMENT NOT CONSIDERED FINAL UNLESS ALL SIGNATURES COMPLETED

REVISIONS

24-OCT-2022 14:20 C:\GEL\Projects\2022\R-5705A_ROW\5705.r.w.sheets\R5705A_1s.r.w4.dgn
C:\GEL\Projects\2022\R-5705A_ROW\5705.r.w.sheets\AT_DESK_TOP-ERR\SVP Jason Prevatt



-L-
PI Sta 21+82.71
Delta = 14' 07" 17.3" (LT)
D = 1' 38" 13.3"
L = 862.63'
T = 433.51'
R = 3,500.00'
SE = 0.03
RO = 72'

I, Parks H. Icenhour Jr., certify that the right of way and permanent easement monumentation for this project shown herein was completed under my direct and responsible charge from an actual survey made under my supervision; that all horizontal closures had a minimum ratio of precision of 1:10,000 (Class A). Field work was performed from 6/13/2022 to 9/01/2022, and all coordinates are based on NAD83/2011; That this survey was performed to meet the requirements of 21NCAC 56.1600 as applicable.
This 25th day of October, 2022.

Professional Land Surveyor L-3996

2
JAMES JOHNSON
DB 730 PG 223

NOTES:

- 1. IF FURTHER INFORMATION REGARDING PROJECT CONTROL IS NEEDED PLEASE CONTACT THE LOCATION AND SURVEYS UNIT.
2. PROJECT CONTROL WAS ESTABLISHED USING GNSS, THE GLOBAL NAVIGATION SATELLITE SYSTEM.
3. RIGHT OF WAY MONUMENTATION ESTABLISHED 6/13/2022 TO 9/01/2022.

GREGORY INVESTMENT PROPERTIES LLC
DB 3497 PG 845