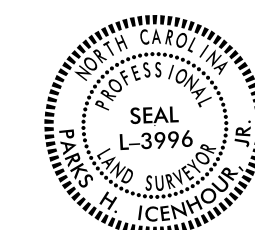
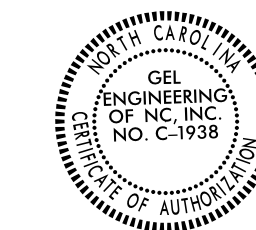


GEL SOLUTIONS
 an Affiliate of THE GEL GROUP, INC.
 2700 SUMNER BLVD.
 SUITE 106
 RALEIGH, NC 27616
 (919) 544-1100
 WWW.GEL-SOLUTIONS.COM



DOCUMENT NOT CONSIDERED FINAL
 UNLESS ALL SIGNATURES COMPLETED

SURVEY CONTROL SHEET

W/ EXISTING CENTERLINE ALIGNMENTS PRIOR TO CONSTRUCTION

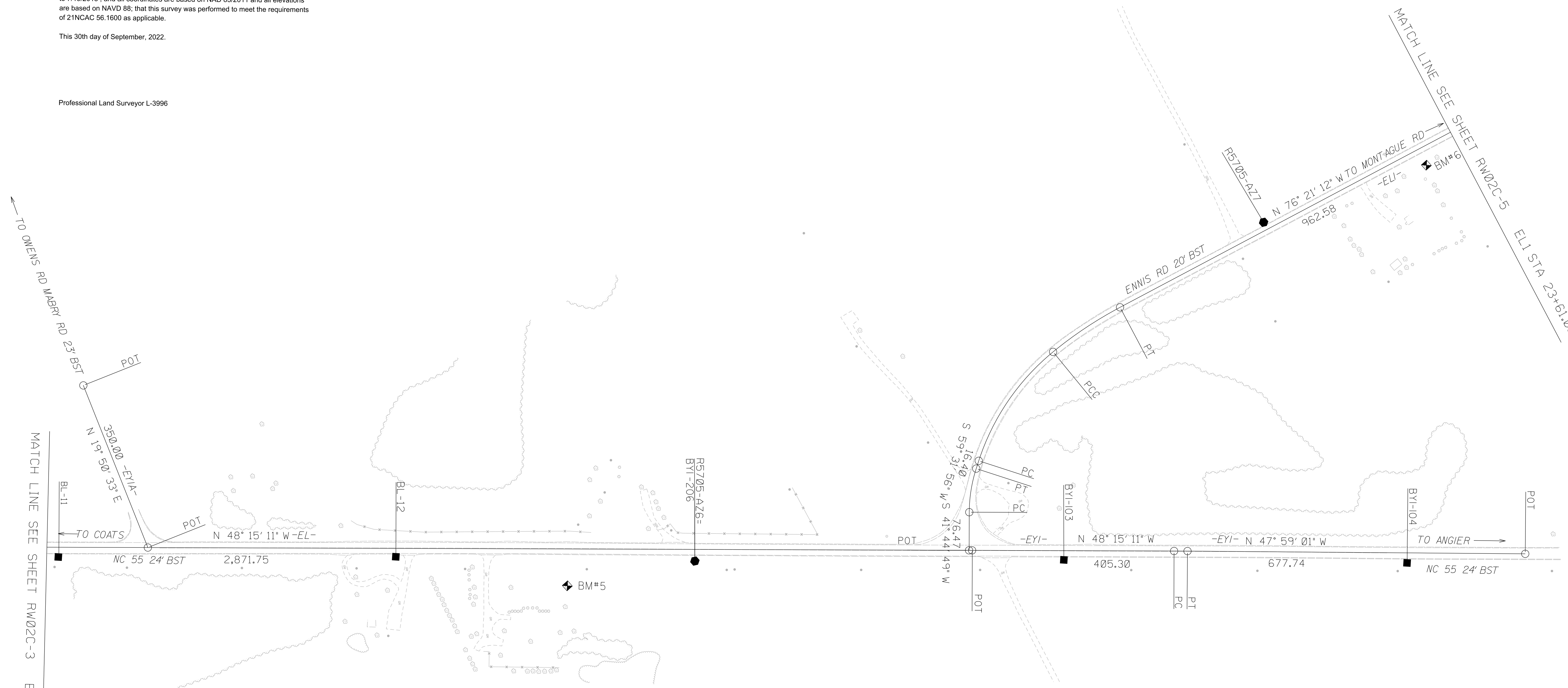
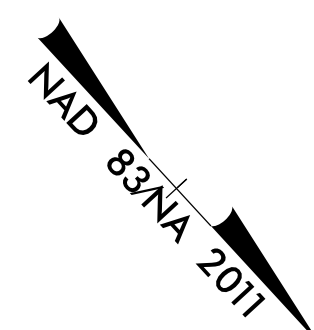
I, Parks H. Icenhour Jr., PLS, certify that the Project Control was Performed under my supervision from an actual GPS survey made under my supervision and the following information was used to perform the survey:

Class of survey: AA
 Type of GPS field procedure: Static
 Dates of survey: 3/1/2018- 7/19/2018
 Datum/Epoch: NAD 83/ NA 2011
 Published/Fixed-control use: Utilized
 Localized around: R5705/U5751-AZ1
 Northing: 644697.210
 Easting: 2075359.162
 Combined grid factor: 0.99987346
 Geoid model: G12NC
 Units: US Survey Feet

I also certify that the Baseline Control for this project was completed under my direct and responsible charge from an actual survey made under my supervision; that all horizontal closures had a minimum ratio of precision of 1:20,000 (Class AA) and Vertical accuracy to Class A. Field work was performed from 3/1/2018 to 7/19/2018, and all coordinates are based on NAD 83/2011 and all elevations are based on NAVD 88; that this survey was performed to meet the requirements of 21NCAC 56.1600 as applicable.

This 30th day of September, 2022.

Professional Land Surveyor L-3996



NOTES:

1. PROJECT CONTROL WAS ESTABLISHED USING GNSS, THE GLOBAL NAVIGATION SATELLITE SYSTEM.
2. THE SURVEY CONTROL DATA FOR THIS PROJECT HAS BEEN COMPILED FROM VARIOUS SOURCES. IF FURTHER INFORMATION REGARDING PROJECT CONTROL IS NEEDED, PLEASE CONTACT THE LOCATION AND SURVEYS UNIT.

**SEE SHEET RW02C-15
 FOR FUTHER
 ALIGNMENT DETAILS**

REVISIONS
 REVISIONS