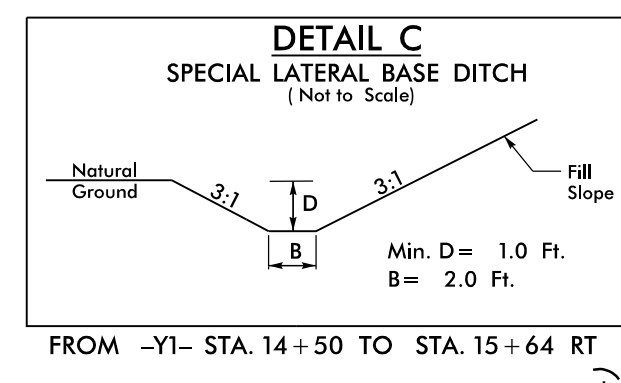
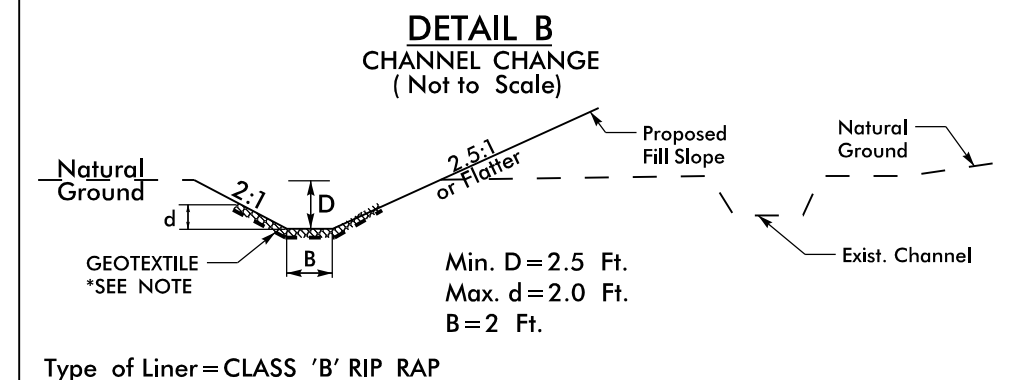
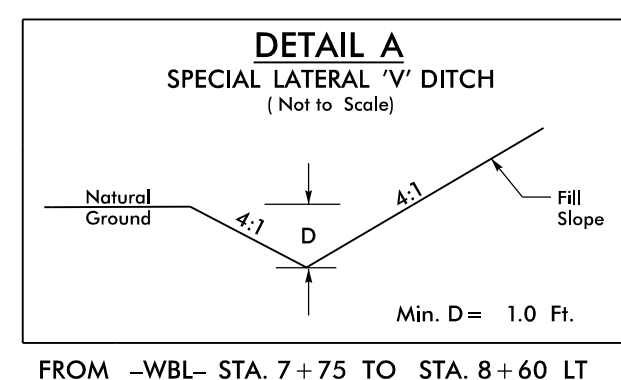


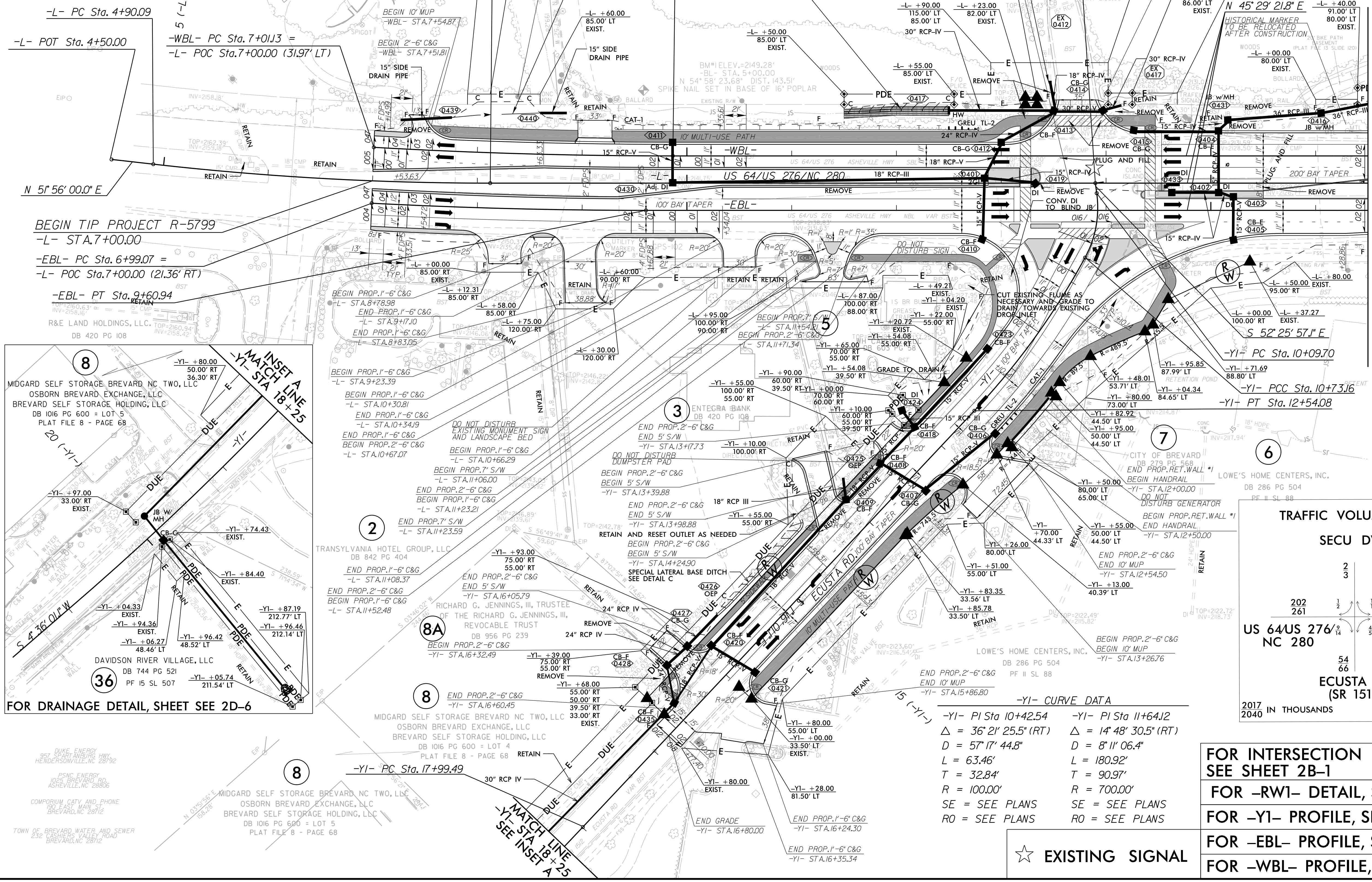
PROJECT REFERENCE NO. R-5799	SHEET NO. 4
ROADWAY DESIGN ENGINEER ELSON C. DRAKE PROFESSIONAL SEAL NO. 118540423074 EXPIRES 06/30/2025	HYDRAULICS ENGINEER ALEXANDER R. JINION PROFESSIONAL SEAL NO. 118540423074 EXPIRES 06/30/2025
7/12/2023	7/12/2023
DOCUMENT NOT CONSIDERED FINAL UNLESS ALL SIGNATURES COMPLETED	



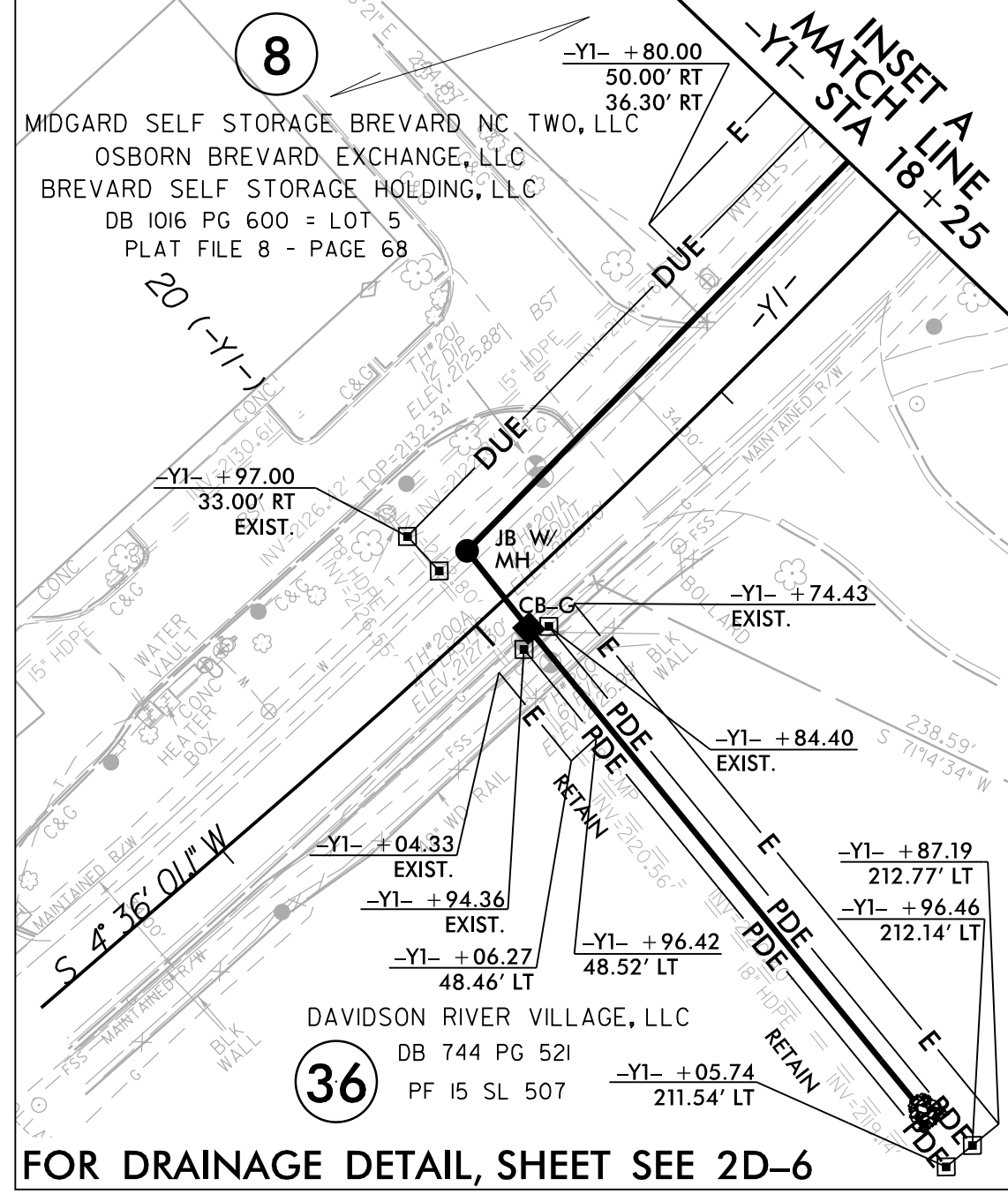
Type of Liner=CLASS "B" RIP RAP

***DESIGN NOTE:**
DURING CONSTRUCTION OF THE CHANNEL CHANGE, REMOVE GEOTEXTILE FABRIC AS NECESSARY TO EMBED THE RIP RAP IN THE STREAM BED.

-L- CURVE DATA	-EBL- CURVE DATA	-WBL- CURVE DATA
-L- PI Sta 6+51.37	-EBL- PI Sta 8+30.04	-WBL- PI Sta 8+43.89
$\Delta = 6^{\circ} 26' 38.2''$ (LT)	$\Delta = 3^{\circ} 00' 02.8''$ (LT)	$\Delta = 3^{\circ} 16' 15.9''$ (LT)
$D = 1^{\circ} 59' 59.5''$	$D = 1^{\circ} 08' 45.3''$	$D = 1^{\circ} 08' 45.3''$
$L = 322.22'$	$L = 261.87'$	$L = 285.46'$
$T = 161.28'$	$T = 162.96'$	$T = 142.77'$
$R = 2,865.00'$	$R = 5,000.00'$	$R = 5,000.00'$
	$SE = 02$	$SE = 02$
	$RO = 42'$	$RO = 42'$



BEGIN TIP PROJECT R-5799
-L- STA.7+00.00
-EBL- PC Sta.6+99.07 =
-L- POC Sta.7+00.00 (21.36' RT)
-EBL- PT Sta.9+60.94



TRAFFIC VOLUME DATA
SECU DWY

202	261	238	298
54	66		

US 64/US 276/ NC 280

ECUSTA RD (SR 1512)

2017 IN THOUSANDS
2040

-YI- CURVE DATA

-YI- PI Sta 10+42.54	-YI- PI Sta 11+64.12
$\Delta = 36^{\circ} 21' 25.5''$ (RT)	$\Delta = 14^{\circ} 48' 30.5''$ (RT)
$D = 57^{\circ} 17' 44.8''$	$D = 8^{\circ} 11' 06.4''$
$L = 63.46'$	$L = 180.92'$
$T = 32.84'$	$T = 90.97'$
$R = 100.00'$	$R = 700.00'$
$SE = SEE PLANS$	$SE = SEE PLANS$
$RO = SEE PLANS$	$RO = SEE PLANS$

**FOR INTERSECTION DETAIL,
SEE SHEET 2B-1**

FOR -RWI- DETAIL, SEE SHEET W-1

FOR -YI- PROFILE, SEE SHEET NO. 12

FOR -EBL- PROFILE, SEE SHEET NO. 9

FOR -WBL- PROFILE, SEE SHEET NO. 9

☆ EXISTING SIGNAL

MATCH LINE -L- STA 16 + 50 SHEET 5

8.17.799
8.17.2023 14:37 R5799_Rdy_psh_04.dgn
PSNC ENERGY 1025 BREVARD RD ASHEVILLE, NC 28806
COMPROPH CATV AND PHONE 232 CASHIERS VALLEY ROAD BREVARD, NC 28712
TOWN OF BREVARD WATER AND SEWER 232 CASHIERS VALLEY ROAD BREVARD, NC 28712

MATCH LINE -L- STA 16+50 SHEET 4

MATCH LINE -L- STA 26+75 SHEET 6

MATCH LINE -Y3- STA 13+50 SHEET 8

MATCH LINE -Y2- STA 15+50 SHEET 7

- L- POT Sta. 18+50.00 (26' RT/LT) =
- WBL- POT Sta. 18+50.00
- EBL- POT Sta. 18+50.00



- SLI- PC Sta. 10+00.00
- L- POT Sta. 20+83.23 (37.55' RT)

-RAI- CURVE DATA

-RAI- PI Sta 10+00.00
 $\Delta = 104' 10' 26.9"$
 $D = 359' 59' 59.3"$ (LT)
 $L = 345.58'$
 $T = 0.00'$
 $R = 55.00'$

-Y3- CURVE DATA

-Y3- PI Sta 10+73.13
 $\Delta = 4' 11' 18.1"$ (LT)
 $D = 2' 5' 53.2"$
 $L = 146.20'$
 $T = 73.13'$
 $R = 2,000.00'$
 SE = SEE PLANS
 RO = SEE PLANS

-SL2- CURVE DATA

-SL2- PI Sta 11+93.06
 $\Delta = 25' 17' 46.1"$ (LT)
 $D = 40' 55' 32.0"$
 $L = 61.81'$
 $T = 31.42'$
 $R = 140.00'$
 SE = SEE PLANS
 RO = SEE PLANS

-SLI- CURVE DATA

-SLI- PI Sta 10+61.11
 $\Delta = 18' 02' 18.2"$ (RT)
 $D = 14' 52' 55.3"$
 $L = 121.21'$
 $T = 61.11'$
 $R = 385.00'$
 SE = SEE PLANS
 RO = SEE PLANS

-SL2- CURVE DATA

-SL2- PI Sta 11+38.84
 $\Delta = 27' 14' 33.1"$ (RT)
 $D = 27' 56' 57.0"$
 $L = 97.47'$
 $T = 49.68'$
 $R = 205.00'$
 SE = SEE PLANS
 RO = SEE PLANS

-SLI- PCC Sta. 11+21.21

-SLI- PRC Sta. 11+89.93

-Y2- CURVE DATA

-Y2- PI Sta 10+49.00
 $\Delta = 2' 48' 25.2"$ (RT)
 $D = 2' 5' 53.2"$
 $L = 97.98'$
 $T = 49.00'$
 $R = 2,000.00'$
 SE = SEE PLANS
 RO = SEE PLANS

-SLI- CURVE DATA

-SLI- PI Sta 11+55.95
 $\Delta = 20' 43' 21.6"$ (RT)
 $D = 30' 09' 20.4"$
 $L = 68.72'$
 $T = 34.74'$
 $R = 300.00'$
 SE = SEE PLANS
 RO = SEE PLANS

-Y2- CURVE DATA

-Y2- PI Sta 10+99.00
 $\Delta = 2' 48' 25.2"$ (RT)
 $D = 2' 5' 53.2"$
 $L = 97.98'$
 $T = 49.00'$
 $R = 2,000.00'$
 SE = SEE PLANS
 RO = SEE PLANS

03-MAY-2023 17:16 R5799_Rdy_psh_05.dgn R:\Roads\17550\17550\17550.dwg

PROJECT REFERENCE NO. **R-5799** SHEET NO. **5**

ROADWAY DESIGN ENGINEER: **William A. ...** HYDRAULICS ENGINEER: **...**

6/15/2023 6/15/2023

DOCUMENT NOT CONSIDERED FINAL UNLESS ALL SIGNATURES COMPLETED

RS&H
 1520 SOUTH BOULEVARD, SUITE 200
 CHARLOTTE, NC 28293
 NC FIRM LICENSE No: F-0493

US 276 (PISGAH HWY)			
2017		2040	
238	36	24	187
298	44	32	244
US 64/US 276/ NC 280		NC 280	
62	71	23	29
US 64 (HENDERSONVILLE HWY)			
2017		2040	
95	112		

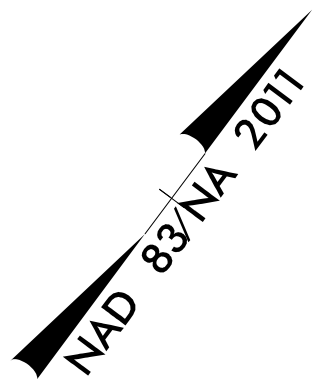
IN THOUSANDS

- FOR -RW2- DETAIL, SEE SHEET W-2
- FOR -EBL- PROFILE, SEE SHEET NO. 9
- FOR -WBL- PROFILE, SEE SHEET NO. 9
- FOR -L- PROFILE, SEE SHEET NO. 10
- FOR -SL1- PROFILE, SEE SHEET NO. 11
- FOR -SL2- PROFILE, SEE SHEET NO. 11
- FOR -RAI- PROFILE, SEE SHEET NO. 11
- FOR -Y2- PROFILE, SEE SHEET NO. 12
- FOR -Y3- PROFILE, SEE SHEET NO. 13

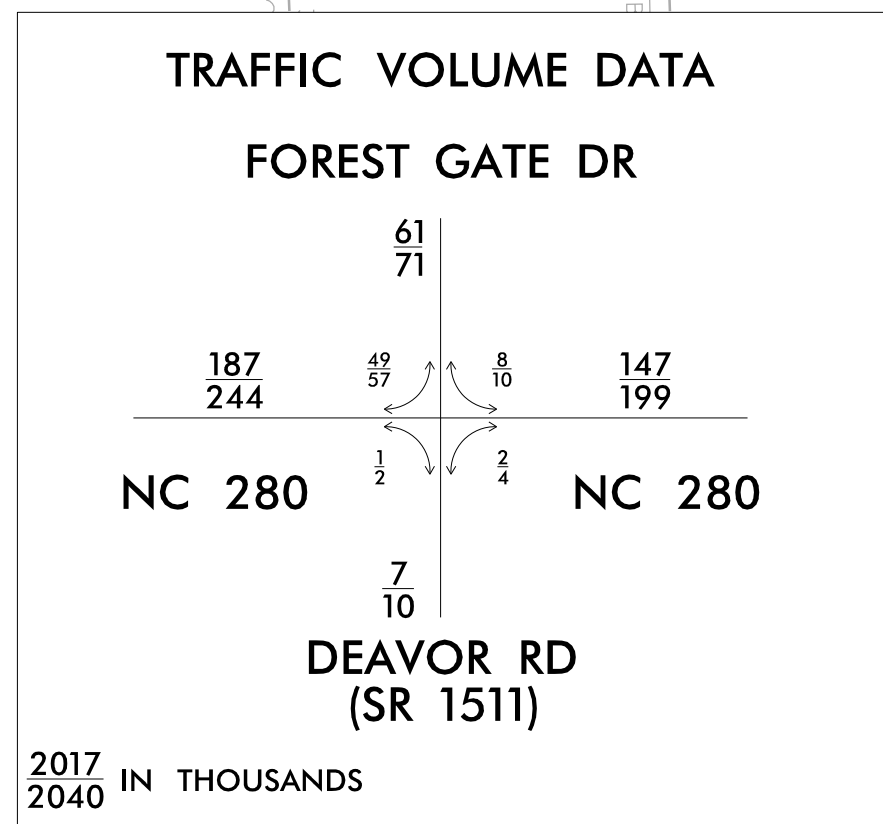
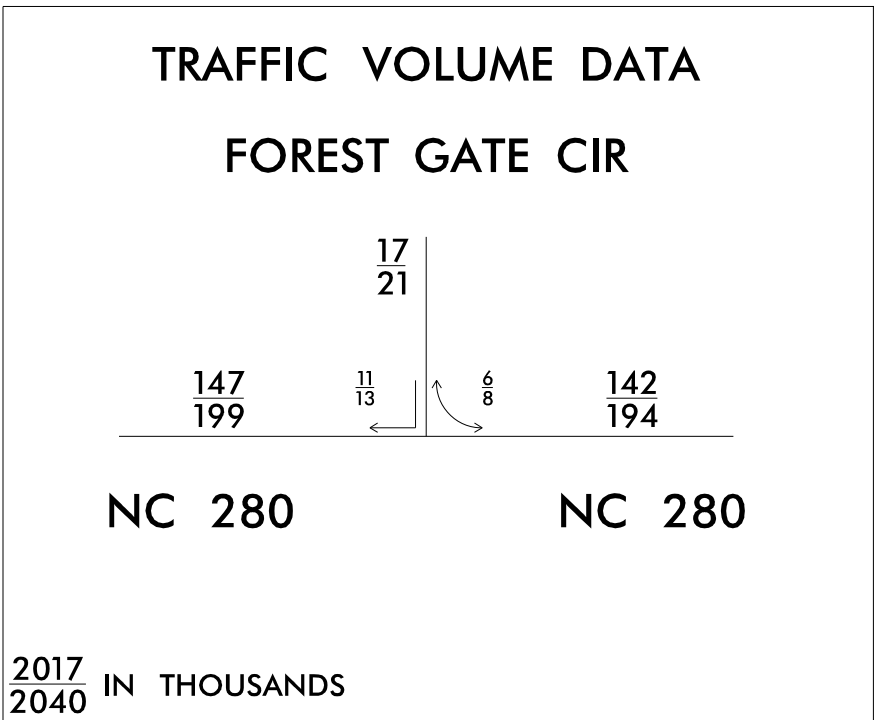
FOR -RA1-, SEE DETAIL SHEETS 2B-2 THRU 2B-4

PROJECT REFERENCE NO. R-5799	SHEET NO. 6
ROADWAY DESIGN ENGINEER SEAL 047357 LILSON C. DRAY	HYDRAULICS ENGINEER SEAL 049764 ALEXANDER R. WILSON
6/15/2023	6/15/2023

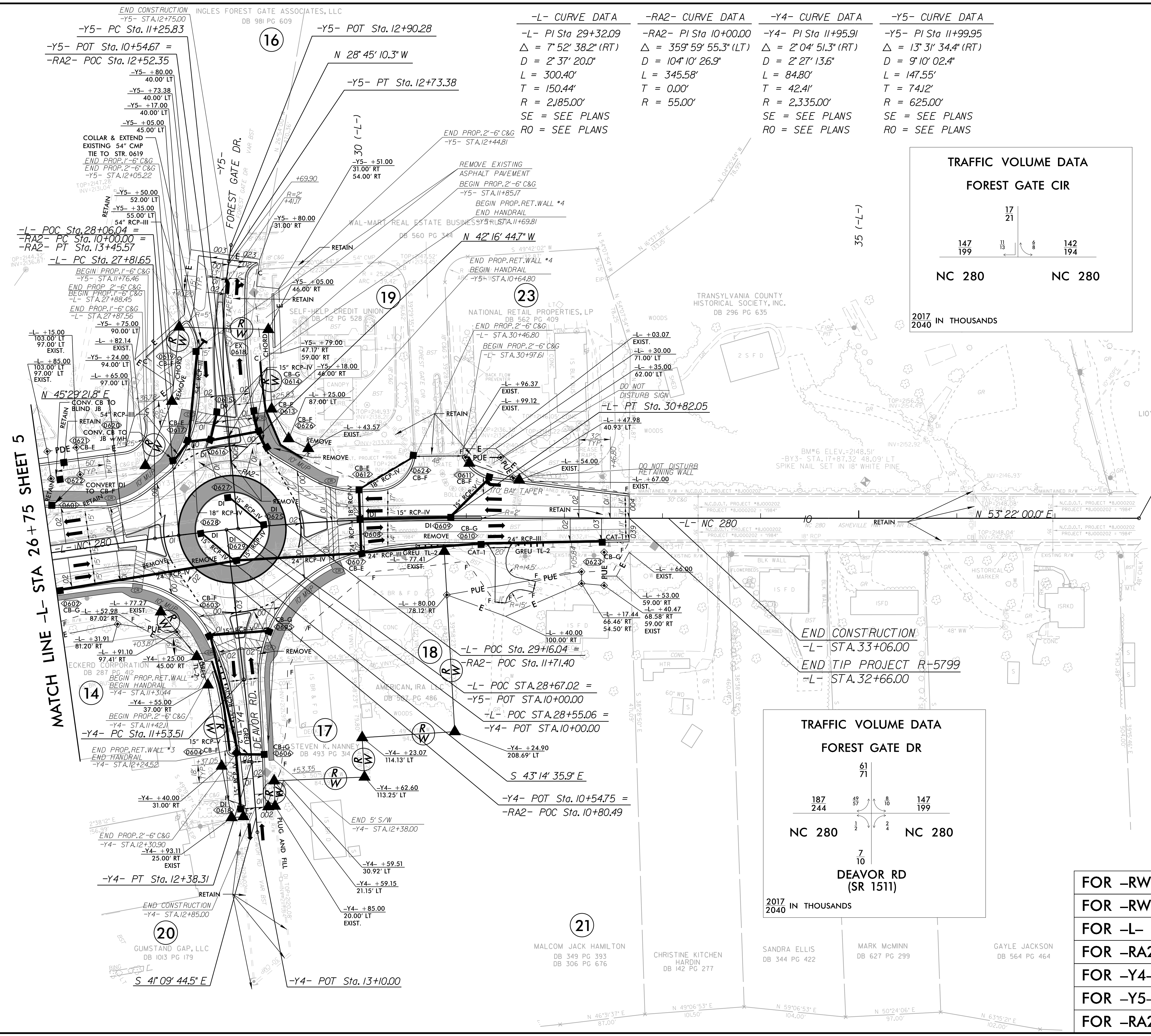
DOCUMENT NOT CONSIDERED FINAL
UNLESS ALL SIGNATURES COMPLETED



-L- CURVE DATA	-RA2- CURVE DATA	-Y4- CURVE DATA	-Y5- CURVE DATA
-L- PI Sta 29+32.09	-RA2- PI Sta 10+00.00	-Y4- PI Sta 11+95.91	-Y5- PI Sta 11+99.95
$\Delta = 7^\circ 52' 38.2''$ (RT)	$\Delta = 359^\circ 59' 55.3''$ (LT)	$\Delta = 2^\circ 04' 51.3''$ (RT)	$\Delta = 13^\circ 31' 34.4''$ (RT)
$D = 2^\circ 37' 20.0''$	$D = 104^\circ 10' 26.9''$	$D = 2^\circ 27' 13.6''$	$D = 9^\circ 10' 02.4''$
$L = 300.40'$	$L = 345.58'$	$L = 84.80'$	$L = 147.55'$
$T = 150.44'$	$T = 0.00'$	$T = 42.41'$	$T = 74.12'$
$R = 2,185.00'$	$R = 55.00'$	$R = 2,335.00'$	$R = 625.00'$
SE = SEE PLANS	SE = SEE PLANS	SE = SEE PLANS	SE = SEE PLANS
RO = SEE PLANS	RO = SEE PLANS	RO = SEE PLANS	RO = SEE PLANS



- FOR -RW3- DETAIL, SEE SHEET W-3
- FOR -RW4- DETAIL, SEE SHEET W-6
- FOR -L- PROFILE, SEE SHEET NO. 10
- FOR -RA2- PROFILE, SEE SHEET NO. 11
- FOR -Y4- PROFILE, SEE SHEET NO. 13
- FOR -Y5- PROFILE, SEE SHEET NO. 13
- FOR -RA2-, SEE DETAIL SHEET 2B-5

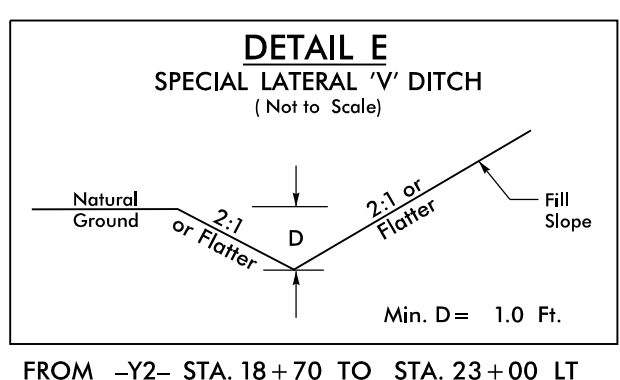


MATCH LINE -L- STA 26 + 75 SHEET 5

8.17.17.99
23 MAY 2023 17:16 R5799_Rdy_psh_06.dgn
R:\Road\Projects\2023\22BB-4ABE-256F7A776D01\DWG\22BB-4ABE-256F7A776D01.dwg

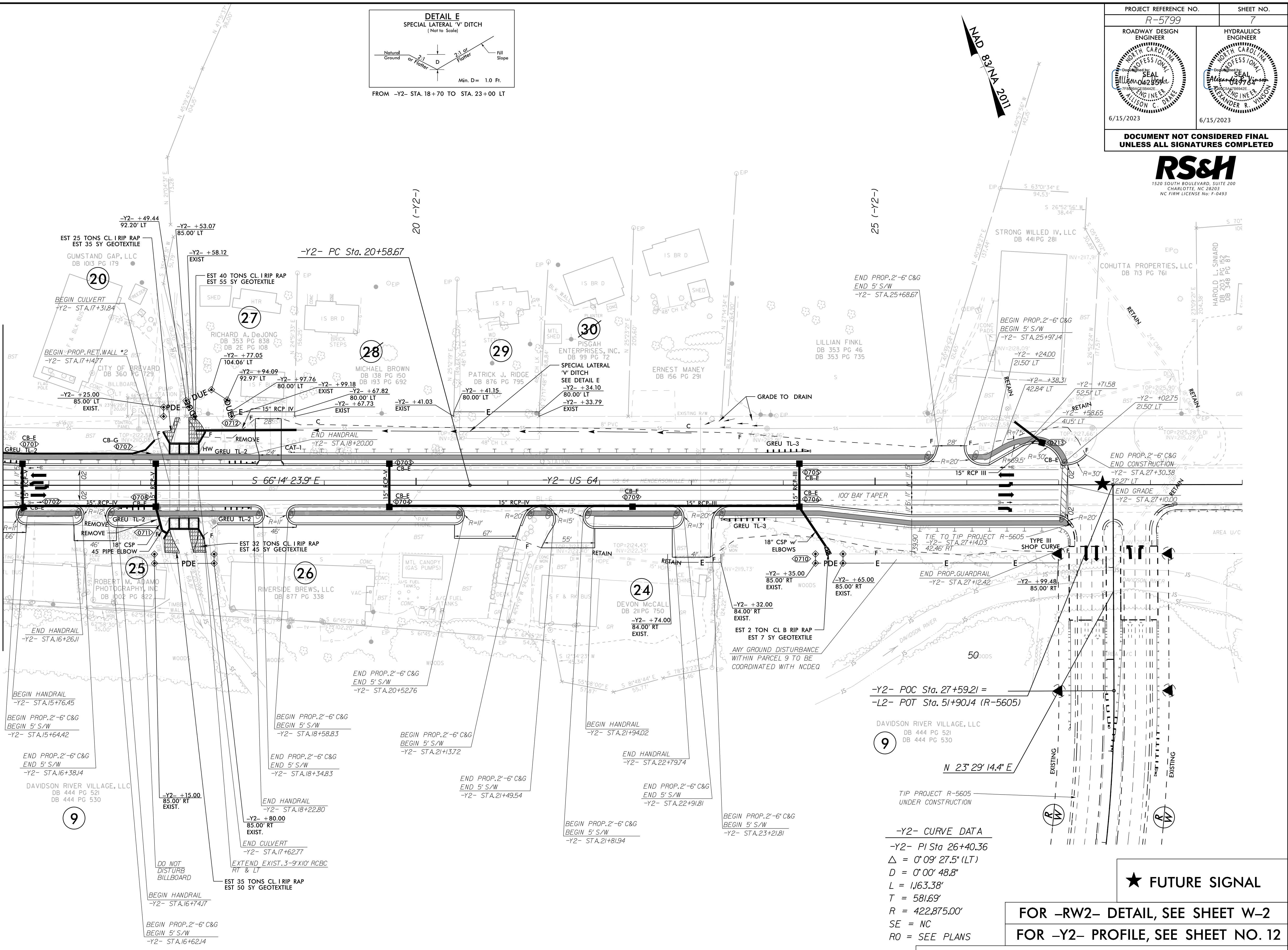
PROJECT REFERENCE NO. R-5799	SHEET NO. 7
ROADWAY DESIGN ENGINEER William C. Drake Professional Engineer No. 42859 Exp. 12/31/2024	HYDRAULICS ENGINEER Alexander R. Johnson Professional Engineer No. 42859 Exp. 12/31/2024
6/15/2023	6/15/2023

**DOCUMENT NOT CONSIDERED FINAL
UNLESS ALL SIGNATURES COMPLETED**



FROM -Y2- STA. 18+70 TO STA. 23+00 LT

MATCH LINE -Y2- STA 15+50 SEE SHEET 5



-Y2- POC Sta. 27+59.21 =
-L2- POT Sta. 51+90.14 (R=5605)

DAVIDSON RIVER VILLAGE, LLC
DB 444 PG 521
DB 444 PG 530

-Y2- CURVE DATA
 -Y2- PI Sta 26+40.36
 $\Delta = 0^{\circ}09'27.5''$ (LT)
 $D = 0^{\circ}00'48.8''$
 $L = 1,163.38'$
 $T = 581.69'$
 $R = 422,875.00'$
 $SE = NC$
 $RO = SEE PLANS$

★ FUTURE SIGNAL

FOR -RW2- DETAIL, SEE SHEET W-2
FOR -Y2- PROFILE, SEE SHEET NO. 12

FOR STRUCTURE PLANS, SEE SHEET C-1 THRU C-10

8.17.7.99
23 MAY 2023 17:16 R5799_Rdy_psh_07.dgn
P:\Road\Projects\5799\Drawings\Sheet\12\12.dwg

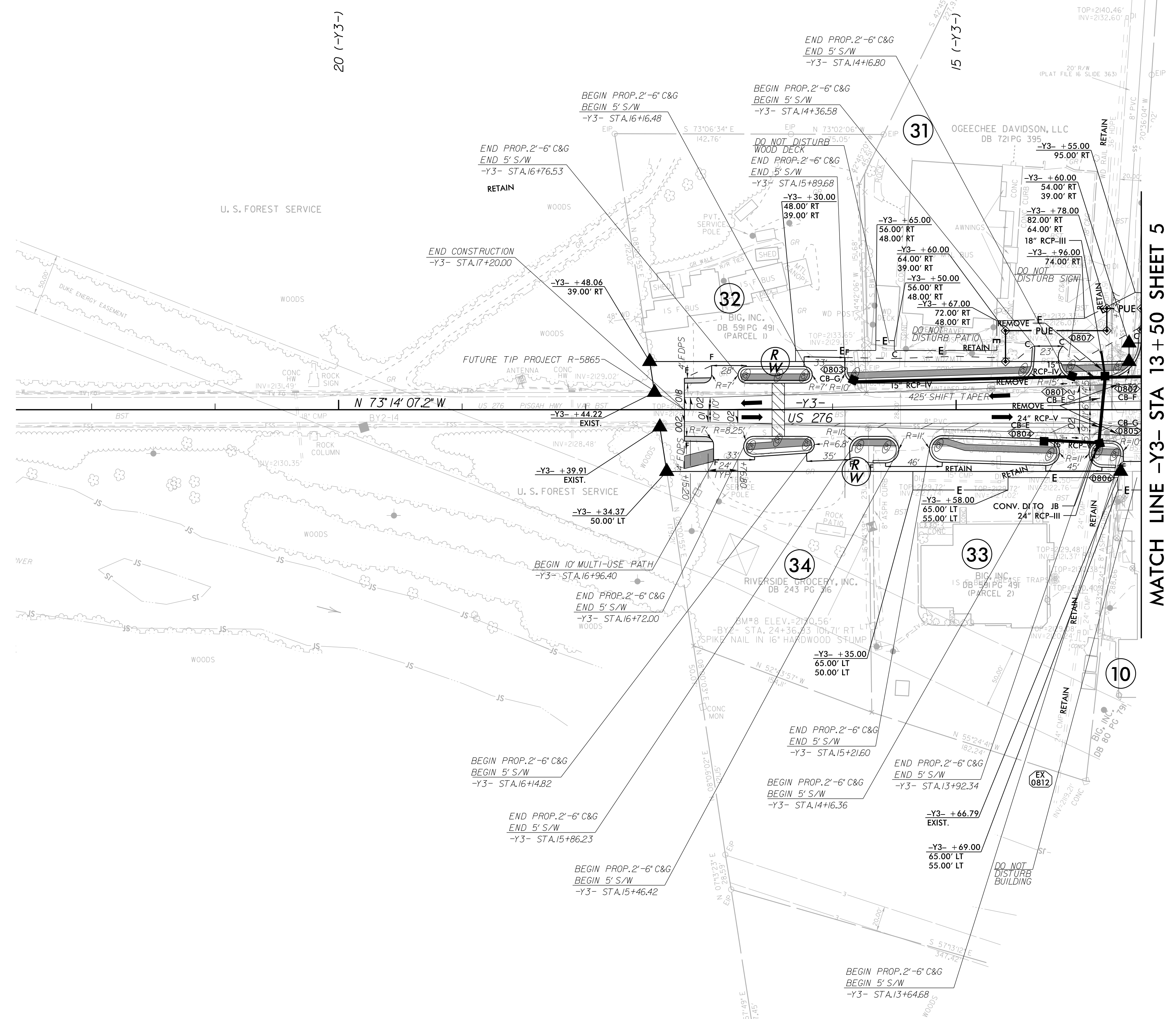
8.17.19

PROJECT REFERENCE NO. R-5799	SHEET NO. 8
ROADWAY DESIGN ENGINEER ALISON C. DYK Professional Seal No. 42357 Exp. 12/31/2024	HYDRAULICS ENGINEER ALEXANDER R. WINDON Professional Seal No. 28942 Exp. 12/31/2024
7/12/2023	7/12/2023

DOCUMENT NOT CONSIDERED FINAL
UNLESS ALL SIGNATURES COMPLETED



NAD 83/NA 2011



MATCH LINE -Y3- STA 13+50 SHEET 5

20 (-Y3-)

15 (-Y3-)

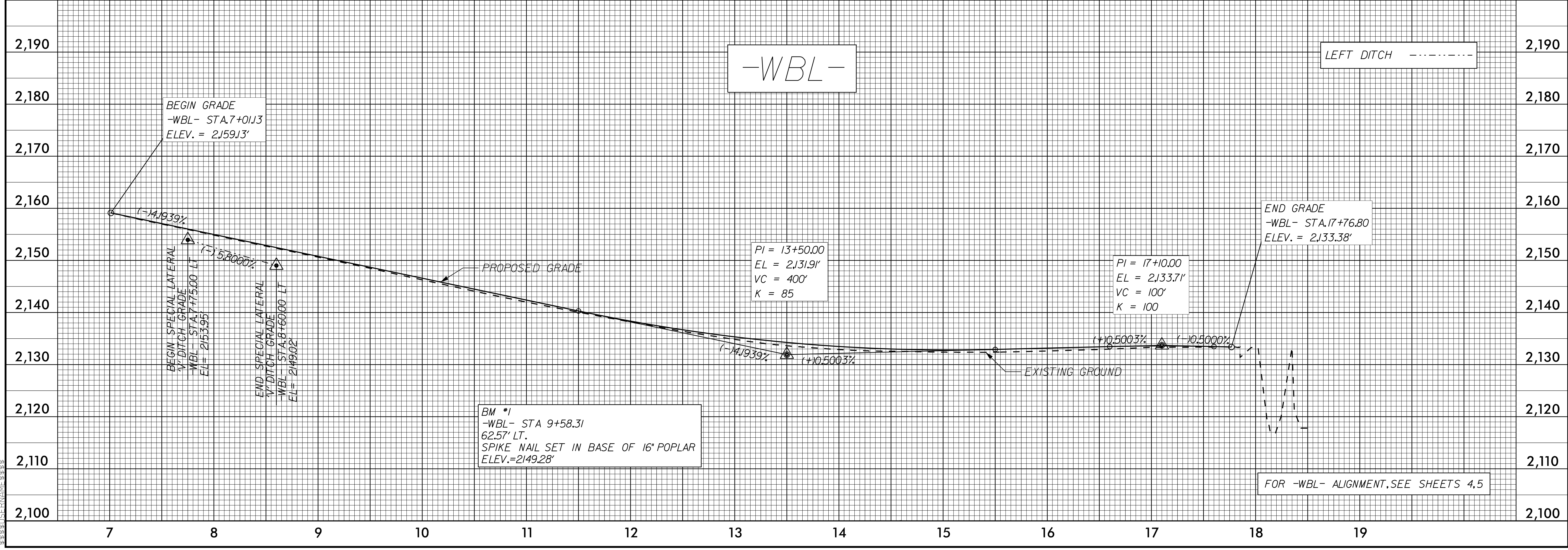
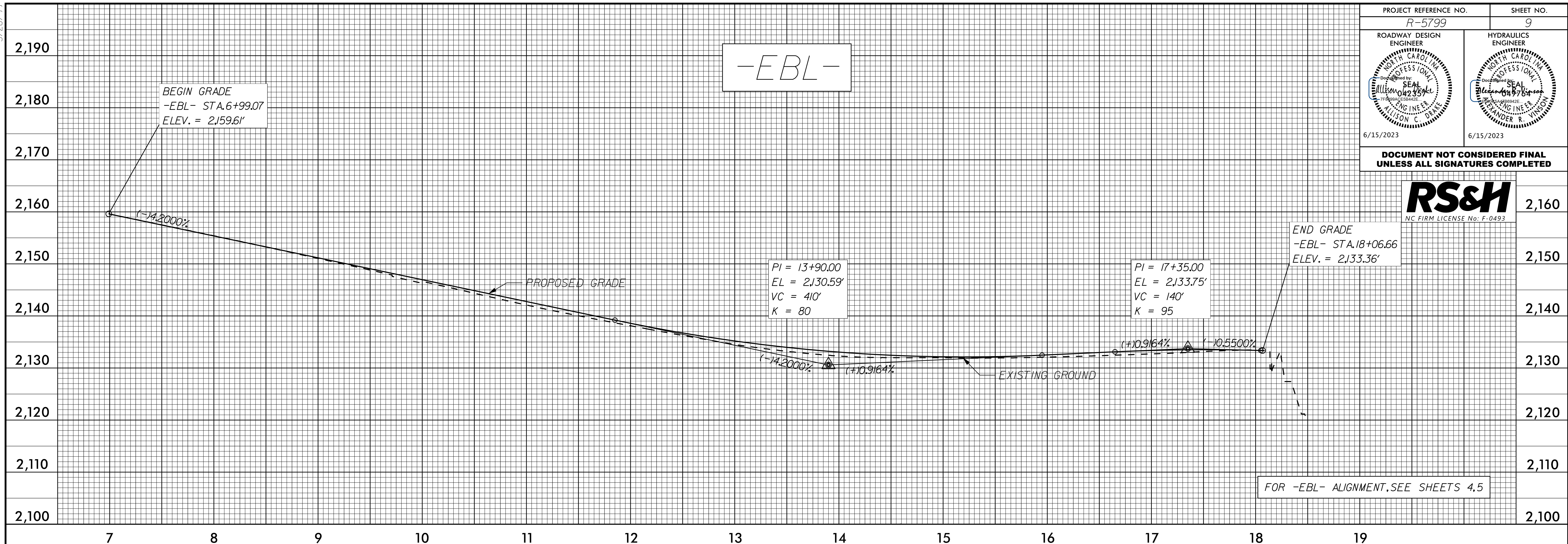
26 JUN 2023 16:34
R:\Road\61615799_Rdy_psh_08.dgn
R:\Road\61615799_Rdy_psh_08.dgn

FOR -Y3- PROFILE, SEE SHEET NO. 13

5/28/23

PROJECT REFERENCE NO. R-5799	SHEET NO. 9
ROADWAY DESIGN ENGINEER WILLIAM C. DRAKE PROFESSIONAL SEAL NO. 42354 6/15/2023	HYDRAULICS ENGINEER ALEXANDER R. WINSTON PROFESSIONAL SEAL NO. 9763 6/15/2023

DOCUMENT NOT CONSIDERED FINAL
UNLESS ALL SIGNATURES COMPLETED

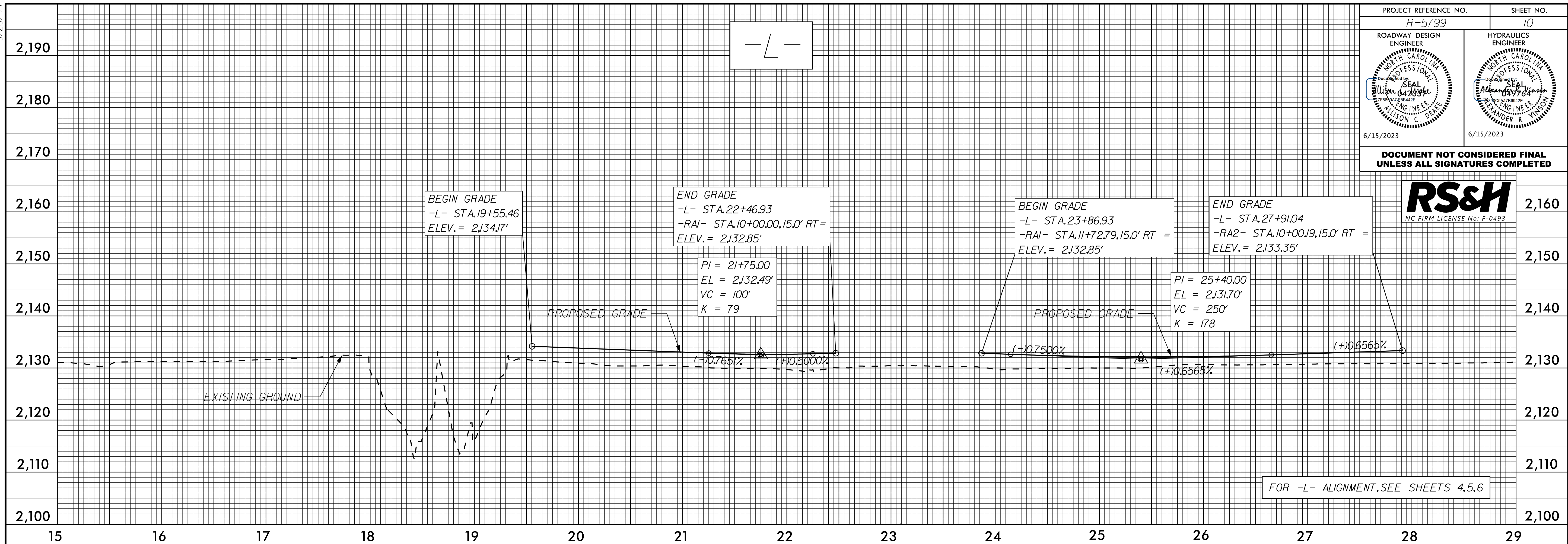


05-MAY-2023 17:09
RS&H Roadway Design
R:\Projects\5799_Roadway\Drawings\5799-09.dwg

5/28/99

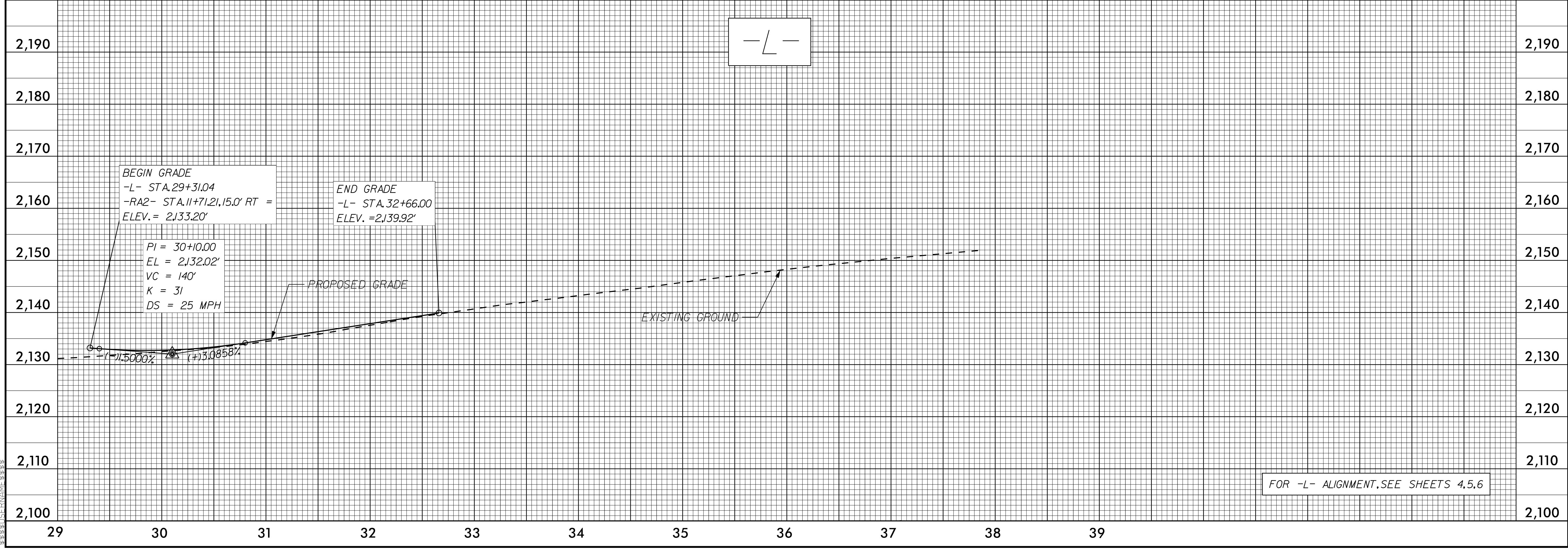
PROJECT REFERENCE NO. R-5799	SHEET NO. 10
ROADWAY DESIGN ENGINEER WILLIAM C. DYK Professional Seal 6/15/2023	HYDRAULICS ENGINEER ALEXANDER R. WINSTON Professional Seal 6/15/2023

DOCUMENT NOT CONSIDERED FINAL
UNLESS ALL SIGNATURES COMPLETED



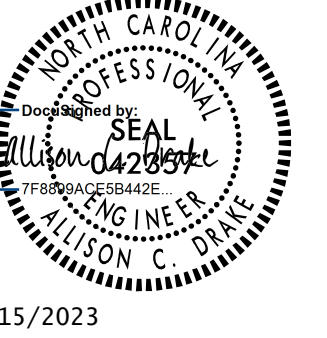
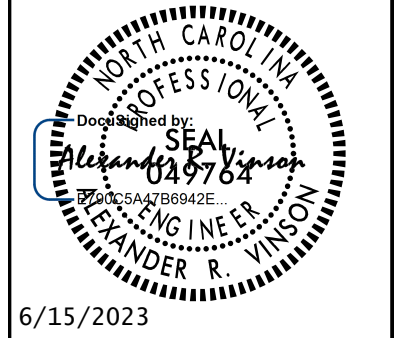
FOR -L- ALIGNMENT, SEE SHEETS 4,5,6

05-MAY-2023 17:09
R:\Road\5799\10.dgn

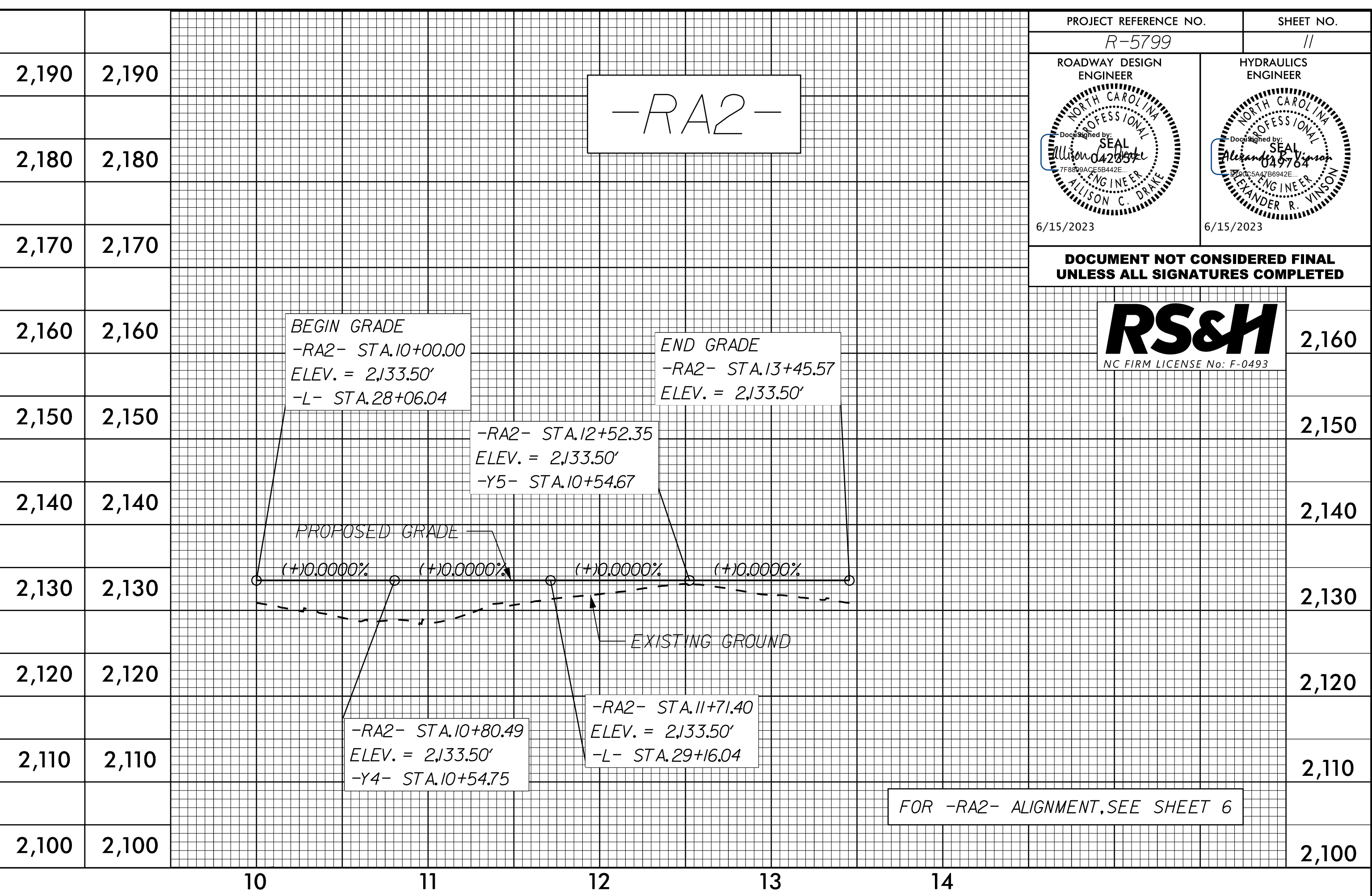
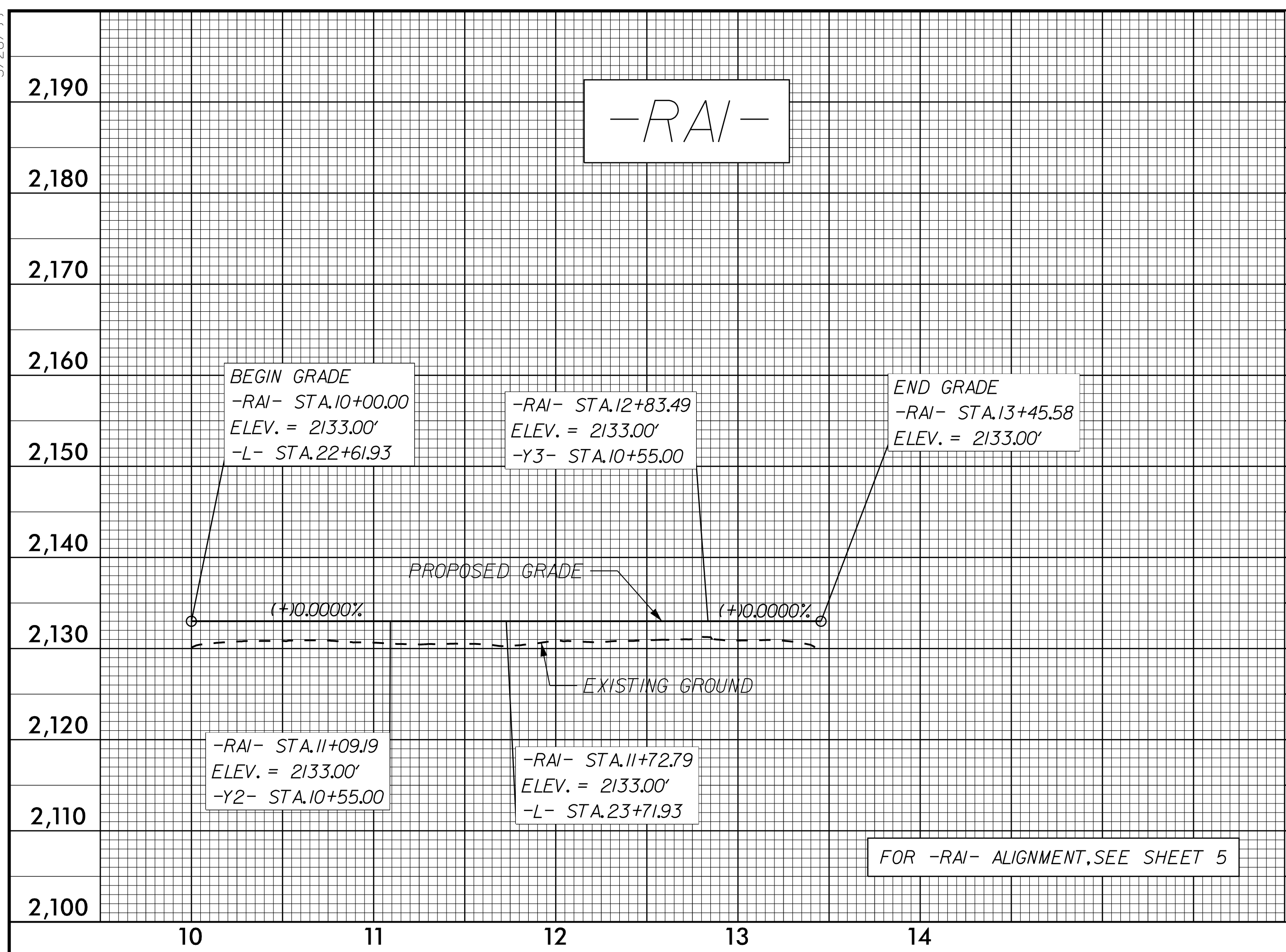


FOR -L- ALIGNMENT, SEE SHEETS 4,5,6

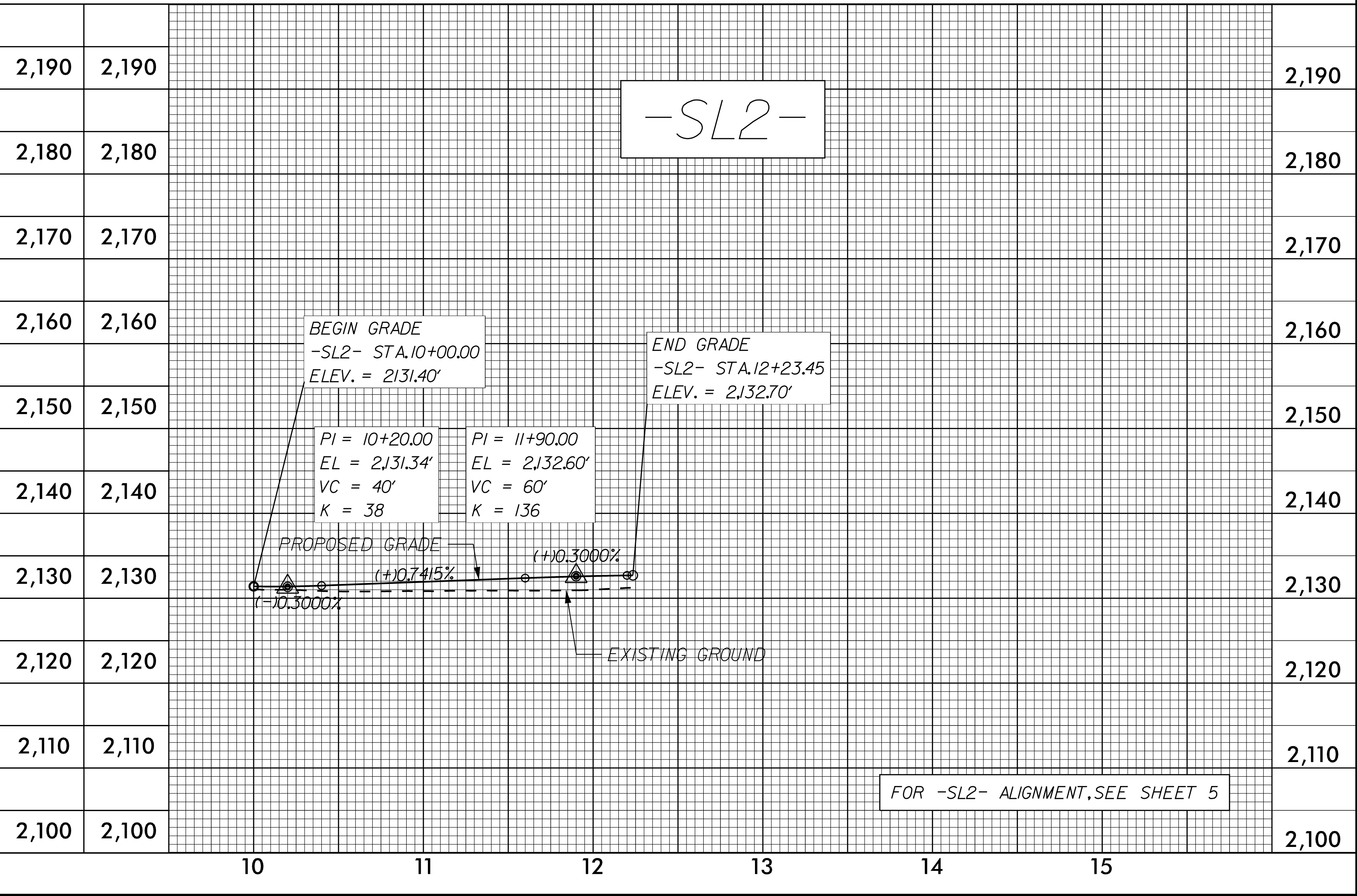
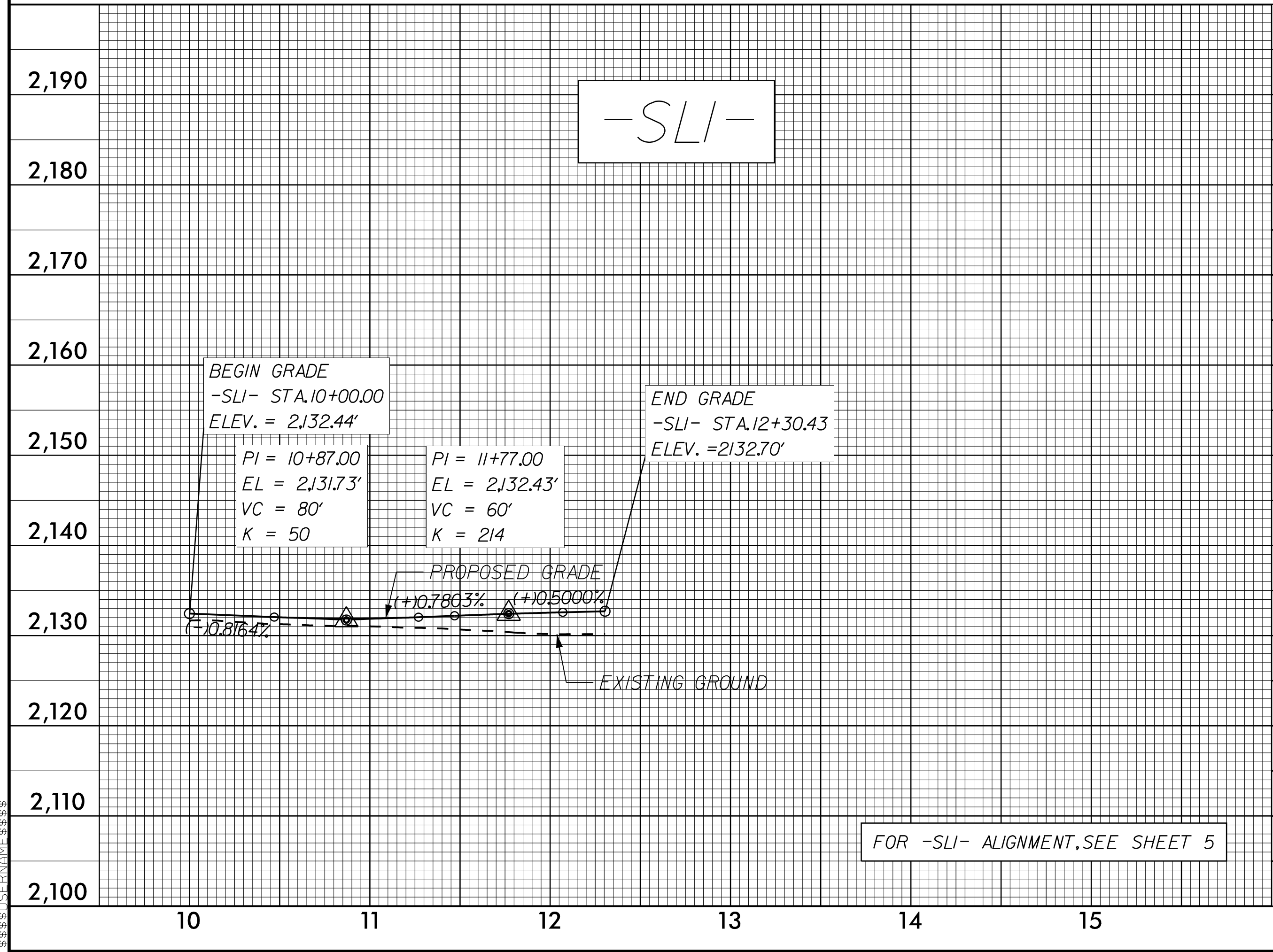
5/28/23

PROJECT REFERENCE NO. R-5799	SHEET NO. 11
ROADWAY DESIGN ENGINEER 	HYDRAULICS ENGINEER 
6/15/2023	6/15/2023

DOCUMENT NOT CONSIDERED FINAL UNLESS ALL SIGNATURES COMPLETED

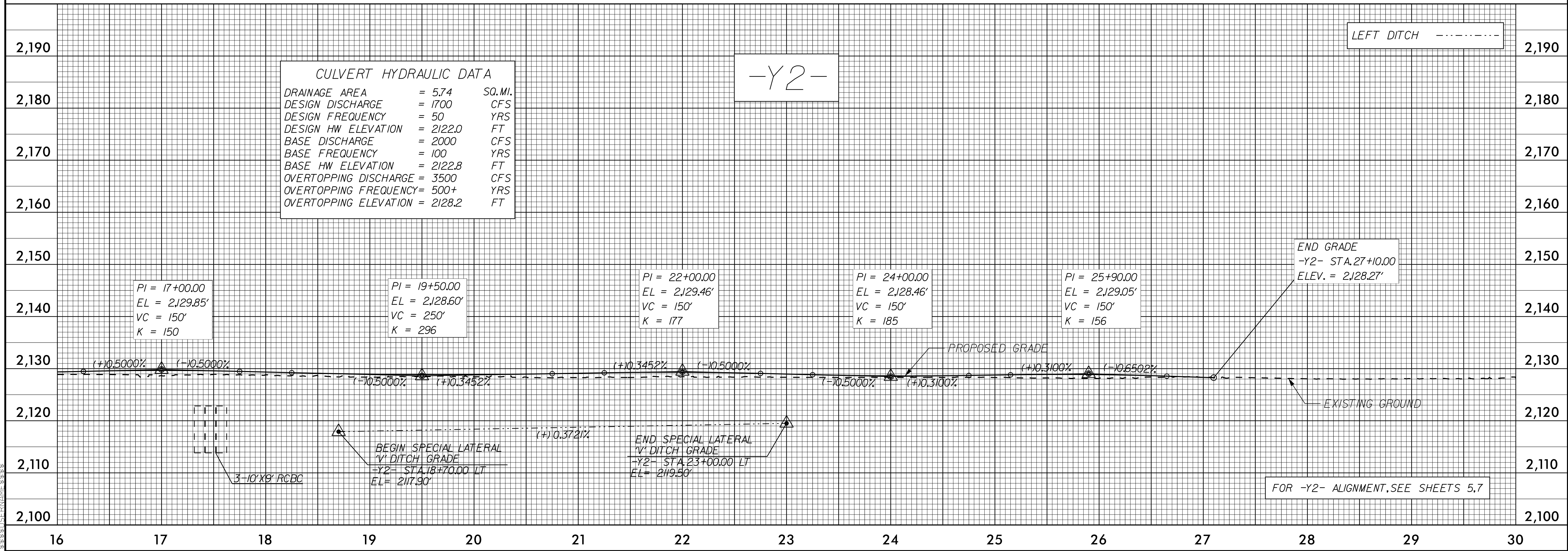
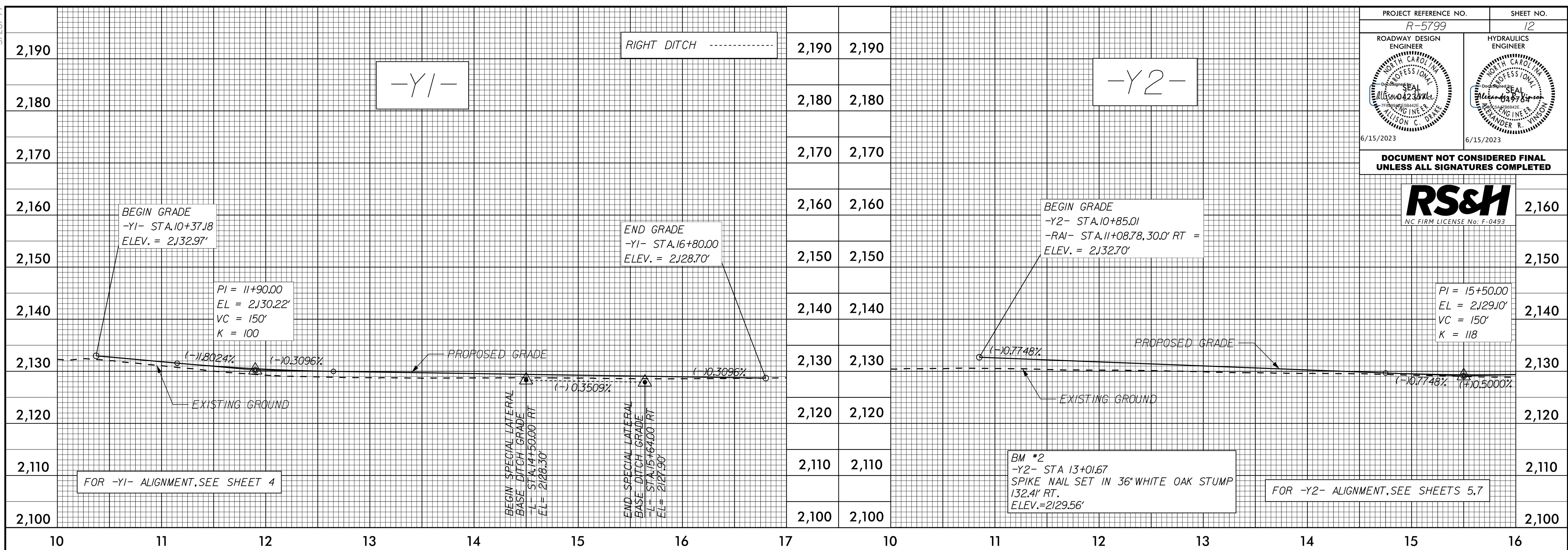


05-MAY-2023 11:09 P:\Roadwork\Projects\5799_Rdy_p\11.dgn



5/28/23

PROJECT REFERENCE NO. R-5799	SHEET NO. 12
ROADWAY DESIGN ENGINEER NORTH CAROLINA PROFESSIONAL SEAL MILLSON C. DRAY 6/15/2023	HYDRAULICS ENGINEER NORTH CAROLINA PROFESSIONAL SEAL ALEXANDER R. WINSTON 6/15/2023
DOCUMENT NOT CONSIDERED FINAL UNLESS ALL SIGNATURES COMPLETED	

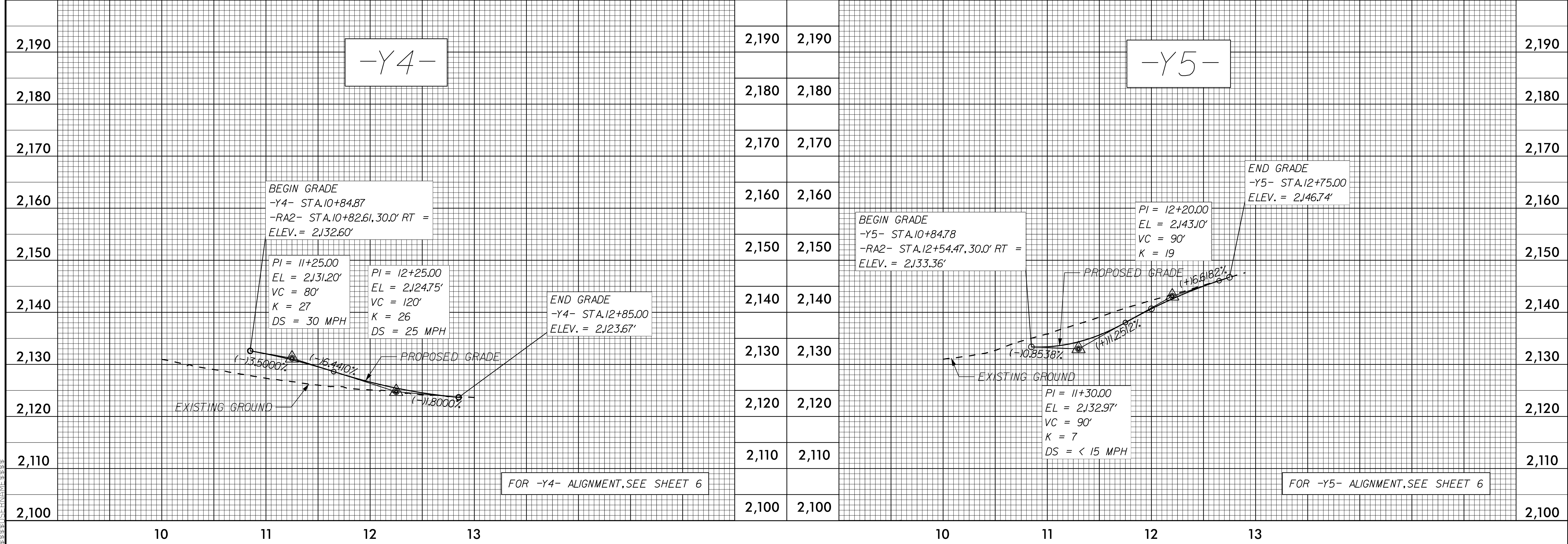
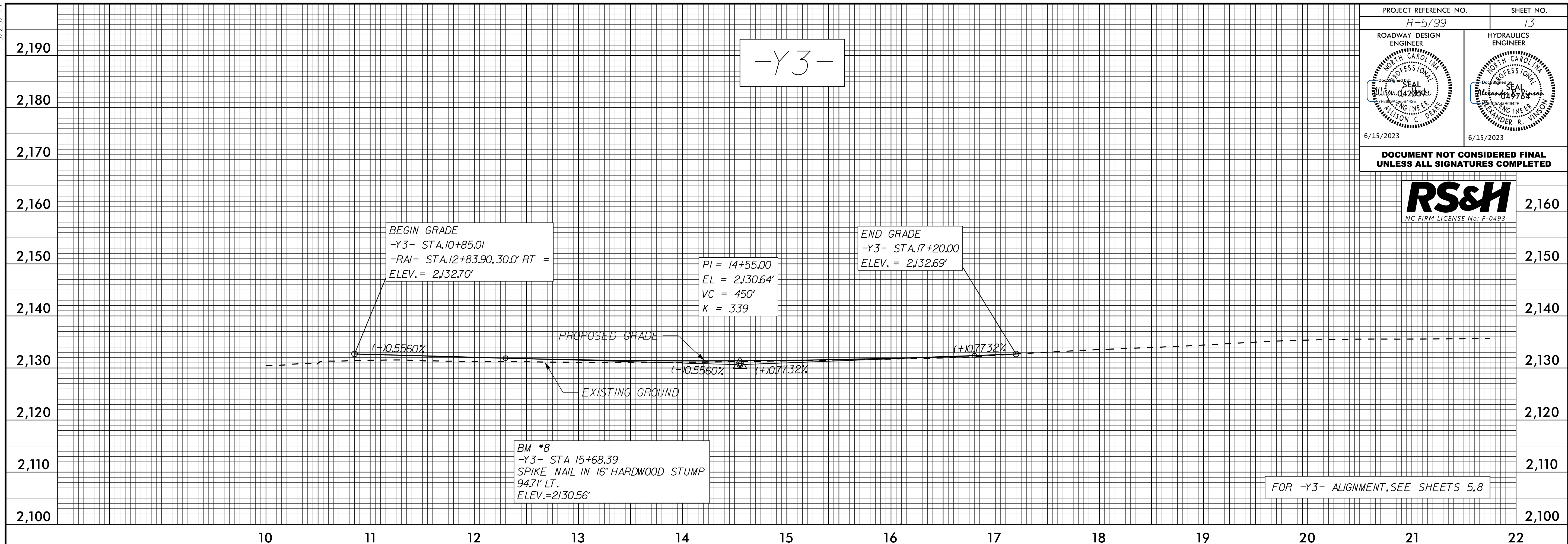


05 MAY 2023 17:09
R:\Roadway\Projects\5799_Rdu\pl12.dgn
\$\$\$\$\$ICERMAN\$\$\$\$\$

5/28/23

PROJECT REFERENCE NO. R-5799	SHEET NO. 13
ROADWAY DESIGN ENGINEER Professional Seal William C. Drake 6/15/2023	HYDRAULICS ENGINEER Professional Seal Elaine B. Vinton 6/15/2023

DOCUMENT NOT CONSIDERED FINAL UNLESS ALL SIGNATURES COMPLETED



05-MAY-2023 17:09
R:\Road\5799-Roadway\5799_Roadway.dwg
PLOT DATE: 5/28/23 11:38 AM