

- Planting Plan Notes:
- All improvements and construction shall be in accordance with state and local codes and regulations.
  - This is a planting plan illustrating the shape and form of landscape beds and the specification and placement of plants on the site. Exact locations of plant materials to be approved by the Landscape Architect in the field prior to installation.
  - Landscape Architect reserves the right to adjust plants to exact location in field.
  - Refer to utility plans for utility location information. If actual site conditions vary from what is shown on the plans or if there are discrepancies between the plans, contact the Landscape Architect for direction as to how to proceed.
  - Refer to RS&H drainage plans for drainage information. If actual site conditions vary from what is shown on the plans or if there are discrepancies between the plans, contact the Landscape Architect for direction as to how to proceed.
  - Plant material may be subject to landscape architect approved substitutions based on current nursery availability.
  - If any part of this plan cannot be followed due to site conditions, contact Landscape Architect prior to commencing work.
  - Base map provided by RS&H.
  - All underground utilities shall be field located by utility companies prior to installing plant material.
  - Perform excavation in the vicinity of underground utilities with care and if necessary, by hand.
  - Verify plant counts and square footages of this plan.
  - Provide matching forms and sizes for plant materials within each species and size designated on the drawings.
  - Trees to be planted a minimum of 4 feet from edge of building, or pavement, except as approved by Landscape Architect.
  - Trees to be planted a minimum of 10 feet from water and sewer lines and a minimum of 15 feet from electrical and gas lines.



CITY OF BREVARD  
95 W MAIN STREET  
BREVAR, NC 28712  
828.885.5600

Client:

Project:  
NCDOT R-5799  
at US 64 and NC 280/64

Project #:  
Drawn By: EW  
Checked By: TB  
Scale: 1" = 10' - 0"

Issue 1 Date 5/31/2021

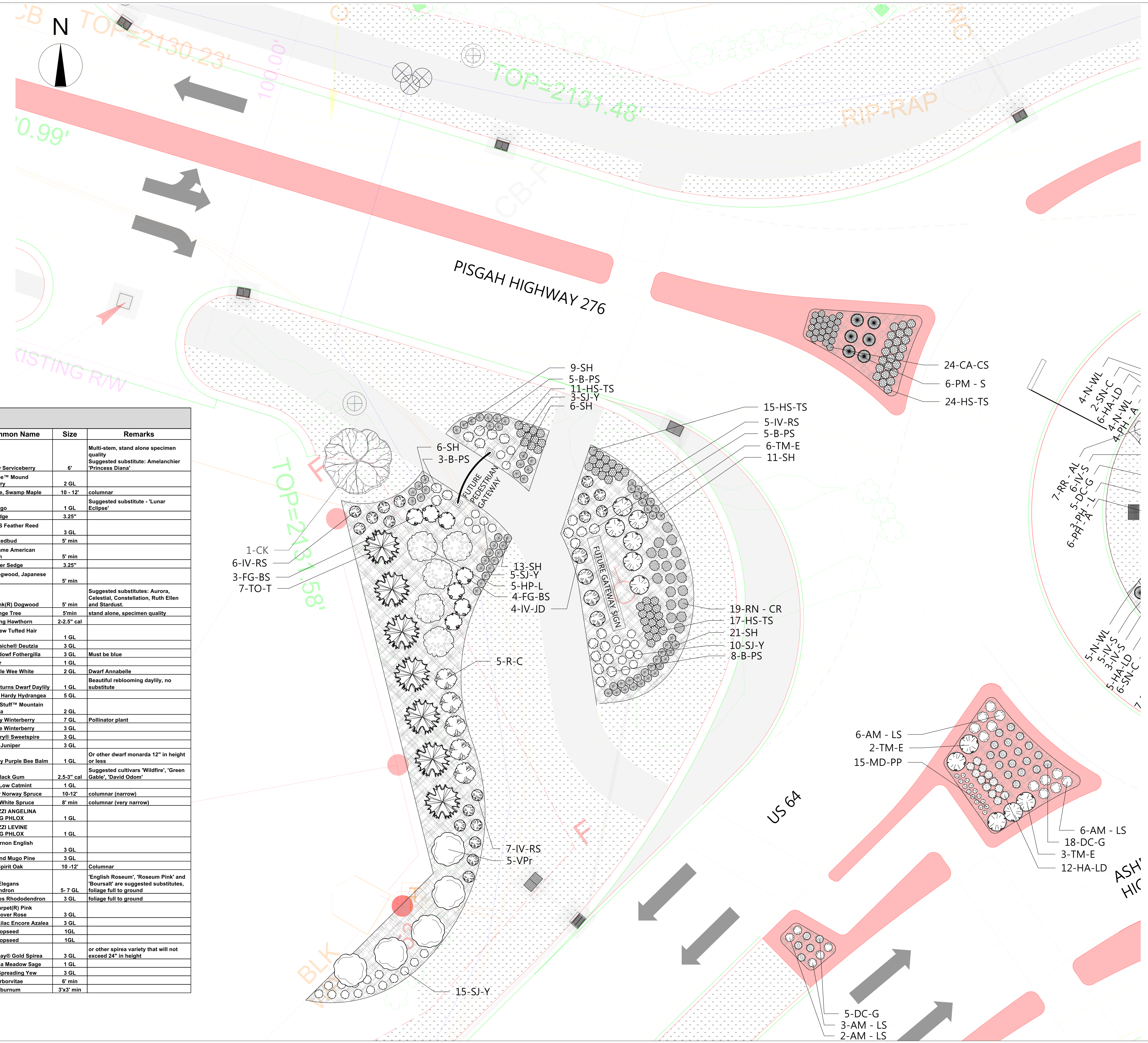
Drawing Title:  
SHRUB AND PERENNIAL  
PLANTING PLAN:  
Gateway sign at Pisgah  
Highway Intersection

Seal:  
Name: Teresa Buckwalter  
Profession: Landscape Architect  
License No.: 1702



Designed by:  
Teresa Buckwalter  
108480280A020...

Drawing No.:



ID	Qty	Latin Name	Common Name	Size	Remarks
AC	4	Amelanchier canadensis	Shadblow Serviceberry	6"	Multi-stem, stand alone specimen quality Suggested substitute: Amelanchier 'Princess Diana'
AM-LS	34	Aronia melanocarpa 'UCONNAM165'	Low Scape™ Mound Chokeberry	2 GL	
AR-B	2	Acer rubrum 'Bowhall'	Red Maple, Swamp Maple	10 - 12'	columnar
B-PS	21	Baptisia hybrid	False Indigo	1 GL	Suggested substitute - 'Lunar Eclipse'
CA-CS	66	Carex amphibola	Creek Sedge	3.25"	
CA-KF	18	Calamagrostis x acutiflora 'Karl Foerster'	Foerster's Feather Reed Grass	3 GL	
CC	3	Cercis canadensis	Eastern Redbud	5' min	
CCar-NF	4	Carpinus caroliniana 'JFS-KW6'	Native Flame American Hornbeam	5' min	
CF-BZ	36	Carex flacca 'Blue Zinger'	Blue Zinger Sedge	3.25"	
CK	6	Cornus kousa	Kousa Dogwood, Japanese Dogwood	5' min	
CR-SP	3	Cornus x 'Rutgan'	Stellar Pink(R) Dogwood	5' min	Suggested substitutes: Aurora, Celestial, Constellation, Ruth Ellen and Stardust.
CV	3	Chionanthus virginicus	White Fringe Tree	5' min	stand alone, specimen quality
CV-WK	3	Crataegus viridis 'Winter King'	Winter King Hawthorn	2-2.5" cal	
DC-G	76	Deschampsia caespitosa 'Goldtau'	Golden Dew Tufted Hair Grass	1 GL	
DG-M	44	Deutzia gracilis 'Mincream'	Crème Fraiche® Deutzia	3 GL	
FG-BS	19	Fothergilla gardenii 'Blue Shadow'	Blue Shadow® Fothergilla	3 GL	Must be blue
HA-LD	60	Helianthus annuus 'Low Down'	Sunflower	1 GL	
HA-W	71	Hydrangea arborescens 'NCHA5'	Invincibelle Wee White	2 GL	Dwarf Annabelle
H-HR	45	Hemerocallis x 'Happy Returns'	Happy Returns Dwarf Daylily	1 GL	Beautiful reblooming daylily, no substitute
HP-L	10	Hydrangea paniculata 'Limelight'	Limelight Hardy Hydrangea	5 GL	
HS-TS	100	Hydrangea serrata 'MAKD'	Tiny Tuff Stuff™ Mountain Hydrangea	2 GL	
IV-JD	4	Ilex verticillata 'Jim Dandy'	Jim Dandy Winterberry	7 GL	Pollinator plant
IV-RS	18	Ilex verticillata 'Red Sprite'	Red Sprite Winterberry	3 GL	
IV-S	106	Itea virginica 'Sprich'	Little Henry® Sweetspire	3 GL	
JS-BS	23	Juniperus squamata 'Blue Star'	Blue Star Juniper	3 GL	
MD-PP	29	Monarda didyma 'Pardon my Purple'	Pardon my Purple Bee Balm	1 GL	Or other dwarf monarda 12" in height or less
NS	3	Nyssa sylvatica	Tupelo, Black Gum	2.5-3" cal	Suggested cultivars 'Wildfire', 'Green Gable', 'David Odom'
N-WL	74	Nepeta x faassenii 'Walker's Low'	Walker's Low Catmint	1 GL	
PA-C	6	Picea abies 'Cupressina'	Columnar Norway Spruce	10-12'	columnar (narrow)
PG-P	3	Picea glauca 'Pendula'	Weeping White Spruce	8' min	columnar (very narrow)
PH-A	24	Phlox hybrida 'PPPHL07301'	PAPARAZZI ANGELINA CREEPING PHLOX	1 GL	
PH-L	18	Phlox hybrida 'PHL091601'	PAPARAZZI LEVINE CREEPING PHLOX	1 GL	
PL-MV	27	Prunus laurocerasus 'Mount Vernon'	Mount Vernon English Laurel	3 GL	
PM-S	37	Pinus mugo 'Slowmound'	Slowmound Mugo Pine	3 GL	
QW-N	9	Quercus x warei 'Nadler'	Kindred Spirit Oak	10-12'	Columnar
R-RE	5	Rhododendron 'Roseum Elegans'	Roseum Elegans Rhododendron	5-7 GL	'English Roseum', 'Roseum Pink' and 'Boursalt' are suggested substitutes, foliage full to ground
R-C	13	Rhododendron 'Chionoides'	Chionoides Rhododendron	3 GL	foliage full to ground
RN-CR	97	Rosa x 'Noatraum'	Flower Carpet(R) Pink Ground Cover Rose	3 GL	
RR-AL	14	Rhododendron 'Robles' PP22762	Autumn Lilac Encore Azalea	3 GL	
SH	85	Sporobolus heterolepis	Prairie Dropseed	1GL	
SH-T	242	Sporobolus heterolepis 'Tara'	Prairie Dropseed	1GL	
SJ-Y	85	Spiraea japonica 'Yan' USPP 21615	Double Play® Gold Spirea	3 GL	or other spirea variety that will not exceed 24" in height
SN-C	20	Salvia nemorosa 'Caradonna'	Caradonna Meadow Sage	1 GL	
TM-E	16	Taxus x media 'Everlow'	Everlow Spreading Yew	3 GL	
TO-T	7	Thuja occidentalis 'Techny'	Techny Arborvitae	6' min	
VPr	5	Viburnum x pragnense	Prague Viburnum	3x3' min	