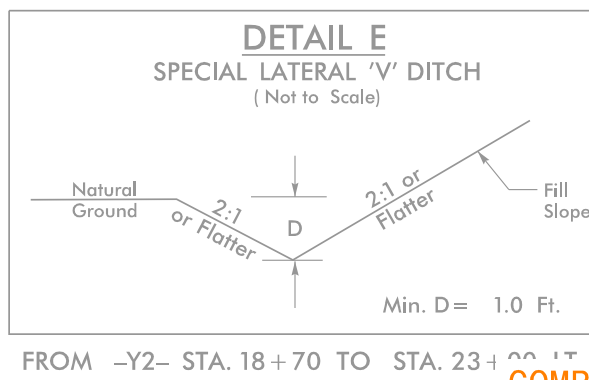


REV. DRAINAGE INVS. & SUE DIAGRAMS, UD-5 & 7 11/11/20
 SUE INFORMATION ADDED 10/28/20
 REV. DRAINAGE REV. ADDED 03/16/20
 MORRIS BROADBAND PLANS ADDED 01/10/20
 ADMIN. ENERGY PLANS ADDED 07/08/19
 DUKE REVISED PLAN ADDED 06/05/19
 REV. DRAINAGE 2/14/18



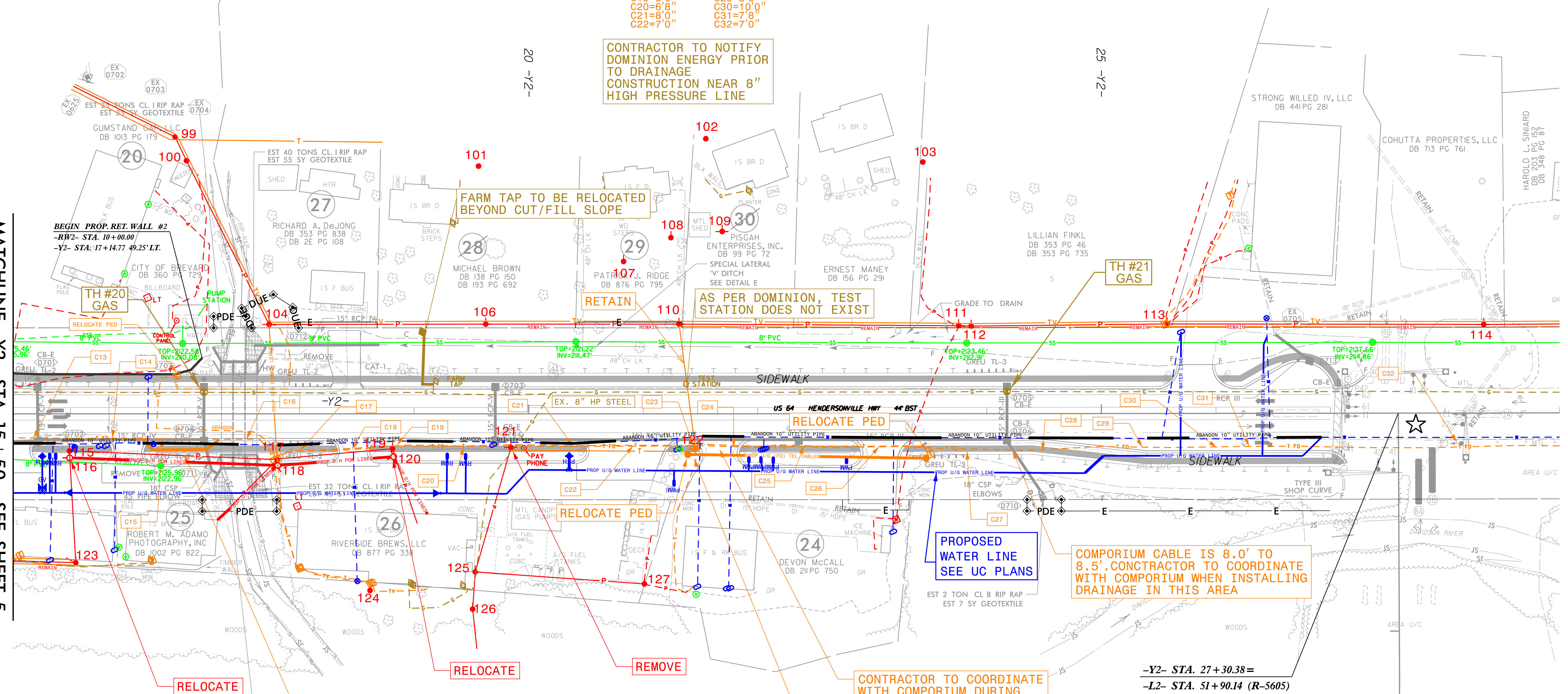
COMPORIUM CONDUIT DEPTHS

C13=5'10"	C23=4'0"
C14=6'5"	C24=6'10"
C15=5'5"	C25=8'3"
C16=2'7"	C26=7'0"
C17=3'0"	C27=8'0"
C18=6'0"	C28=8'6"
C19=8'0"	C29=8'0"
C20=6'8"	C30=10'0"
C21=8'0"	C31=7'8"
C22=7'0"	C32=7'0"

THE WATER & SEWER LINES ARE SHOWN ON THESE PLANS FOR INFORMATIONAL PURPOSES ONLY, SEE THE LATEST UTILITY CONSTRUCTION (UC) PLANS FOR THE ACTUAL DESIGN PLANS.

PROJECT REFERENCE NO. R-5799 SHEET NO. UD-7
 THIS SHEET CORRESPONDS TO RDY-7
UTILITIES BY OTHERS
 ALL PROPOSED UTILITY WORK SHOWN ON THIS SHEET WILL BE DONE BY OTHERS. NO PAYMENT WILL BE MADE TO THE CONTRACTOR FOR PROPOSED UTILITY WORK SHOWN ON THIS SHEET.

MATCHLINE -Y2- STA 15+50 SEE SHEET 5



CONTRACTOR TO NOTIFY DOMINION ENERGY PRIOR TO DRAINAGE CONSTRUCTION NEAR 8" HIGH PRESSURE LINE

FARM TAP TO BE RELOCATED BEYOND CUT/FILL SLOPE

AS PER DOMINION, TEST STATION DOES NOT EXIST

PROPOSED WATER LINE SEE UC PLANS

COMPORIUM CABLE IS 8.0' TO 8.5'. CONTRACTOR TO COORDINATE WITH COMPORIUM WHEN INSTALLING DRAINAGE IN THIS AREA

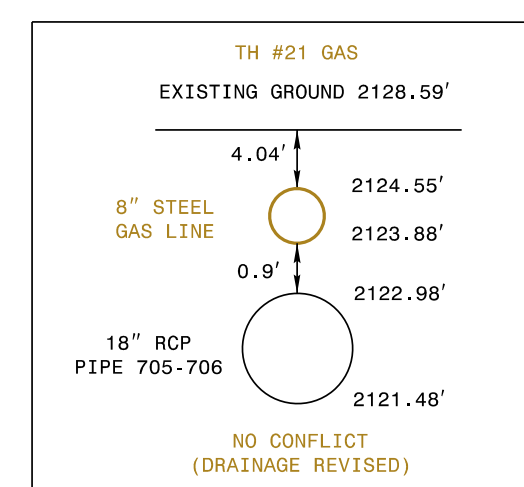
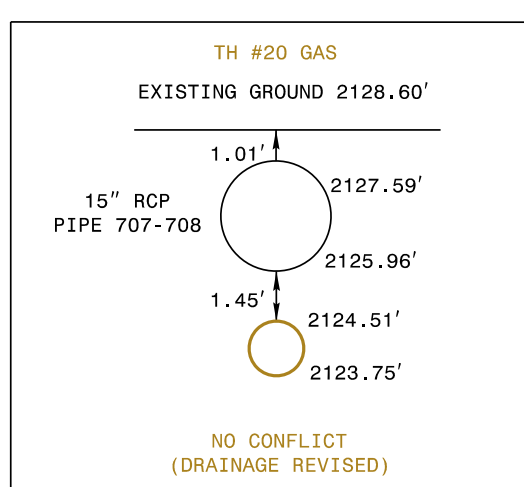
CONTRACTOR TO COORDINATE WITH COMPORIUM DURING DRAINAGE INSTALLATION

RELOCATE POLE FOR SERVICE ACROSS ROAD

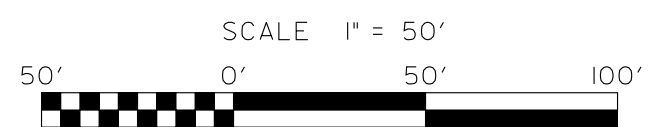
RELOCATE 3 CONDUITS

DAVIDSON RIVER VILLAGE, LLC DB 444 PG 521 DB 444 PG 530

DAVIDSON RIVER VILLAGE, LLC DB 444 PG 521 DB 444 PG 530



- 0701 TOP=2128.70' INV IN=2125.70' (0702)
- 0702 TOP=2128.70' INV IN=2125.50' (0701) INV OUT=2125.40' (0708)
- 0703 TOP=2128.30' INV IN=2125.30' (0704) OUTLET 0710 INV=2118.40'
- 0704 TOP=2128.30' INV IN=2125.00' (0703) INV OUT=2124.90' (0709)
- 0705 TOP=2128.00' INV IN=2121.50' (0706) OUTLET 0711 INV=2119.00'
- 0706 TOP=2128.00' INV IN=2121.20' (0705) INV IN=2122.50' (0709) INV OUT=2121.20' (0710)
- 0707 TOP=2129.19' INV OUT=2126.19' (0708)
- 0708 TOP=2129.19' INV IN=2124.60' (0702) INV IN=2125.90' (0707) INV OUT=2124.50' (0711)
- 0709 TOP=2128.60' INV IN=2123.50' (0704) INV OUT=2123.40' (0706)
- 0710 OUTLET 0710 INV=2118.40'
- 0712 INV IN=2125.00' (0703) INV OUT=2117.90' (0709)
- 0713 TOP=2127.41' INV OUT=2124.41'



TRANSPORTATION 31734-10 R-5799 PISOAH FOREST UTILITIES R5799 UT UD-7.DGN