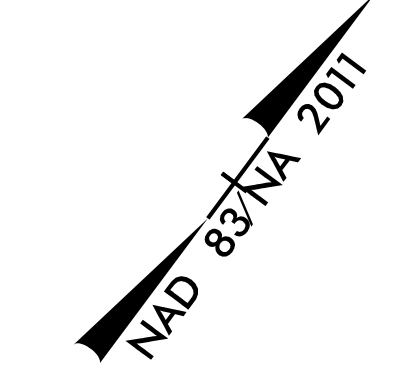
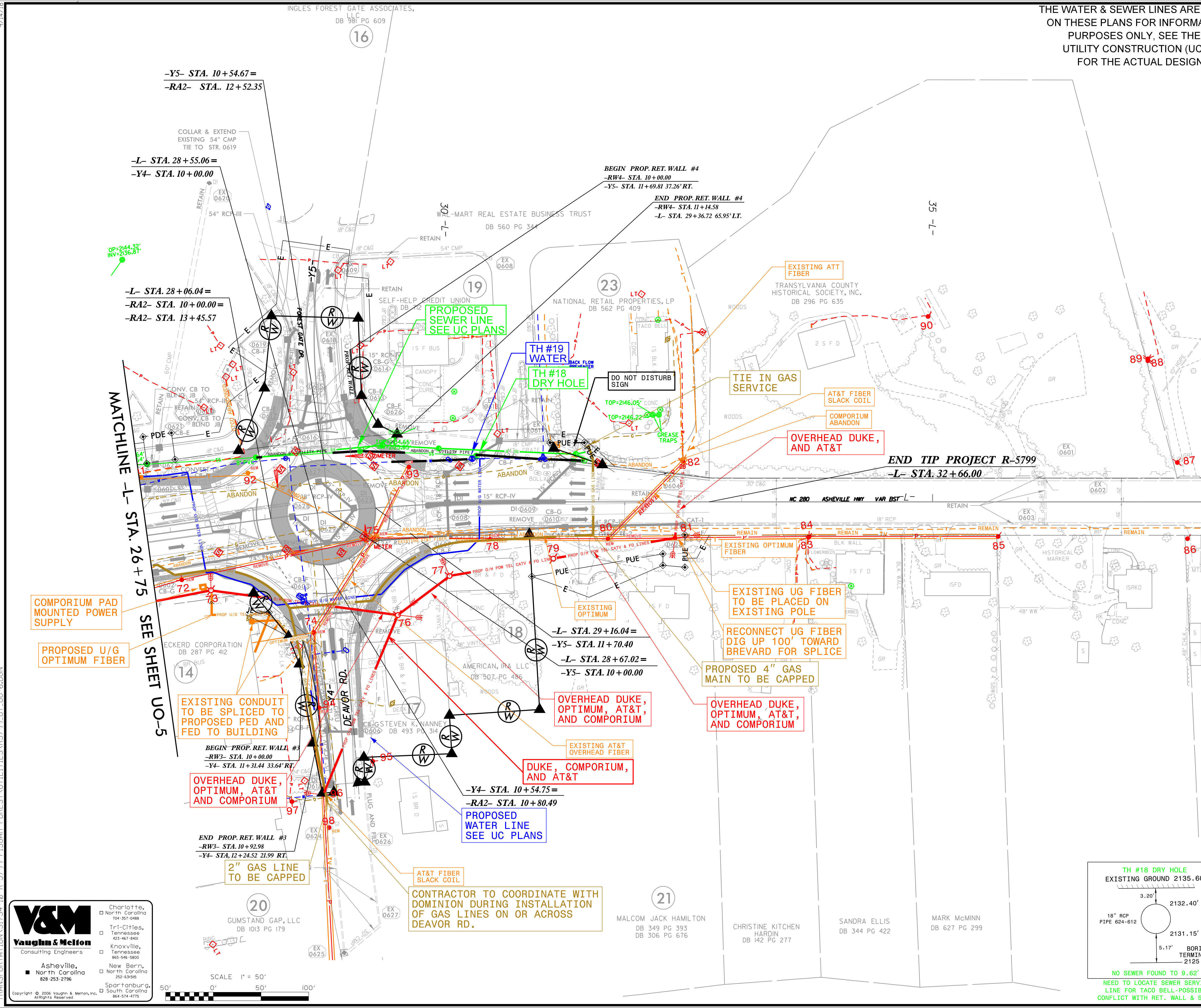


REV. DRAINAGE INVS. & SUE DIAGRAMS, UD-5 & 7 11/11/20
 SUE INFORMATION ADDED 10/23/20
 REV. DRAINAGE REV. ADDED 03/16/20
 MORRIS BROADBAND PLANS ADDED 03/10/20
 DOMINION ENERGY PLANS ADDED 07/08/19
 DUKE REVISED PLAN ADDED 06/05/19
 DUKE REV. DRAINAGE 2/7/14/18

THE WATER & SEWER LINES ARE SHOWN ON THESE PLANS FOR INFORMATIONAL PURPOSES ONLY, SEE THE LATEST UTILITY CONSTRUCTION (UC) PLANS FOR THE ACTUAL DESIGN PLANS.

PROJECT REFERENCE NO.	SHEET NO.
R-5799	UD-6
THIS SHEET CORRESPONDS TO RDY-6	
UTILITIES BY OTHERS	
ALL PROPOSED UTILITY WORK SHOWN ON THIS SHEET WILL BE DONE BY OTHERS. NO PAYMENT WILL BE MADE TO THE CONTRACTOR FOR PROPOSED UTILITY WORK SHOWN ON THIS SHEET.	

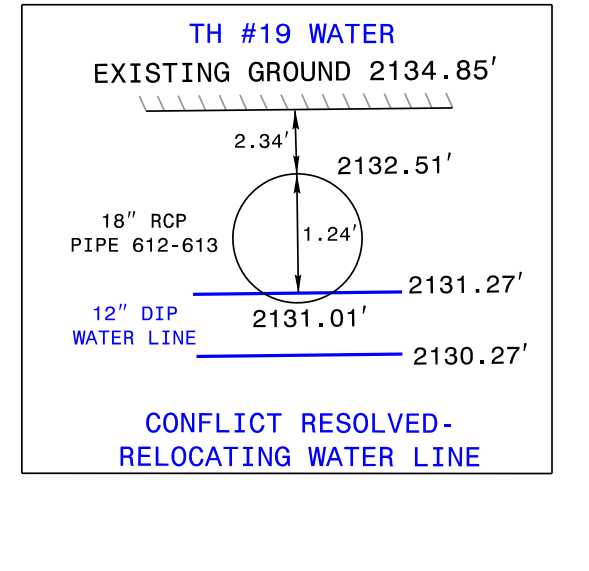
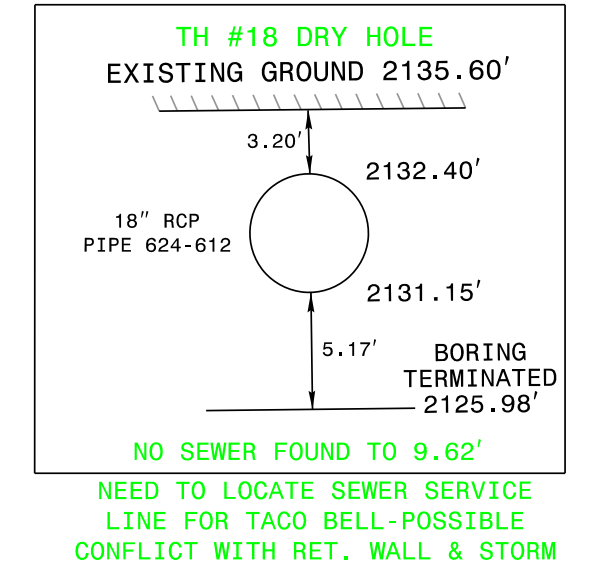
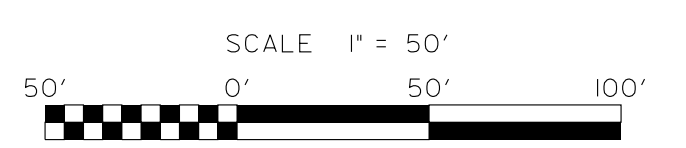


0601 TOP= 2131.54' INV IN= 2121.89' (0620) INV IN= 2121.89' (0621) INV OUT= 2121.89' (0528)	0615 TOP= 2134.00' INV OUT= 2130.83' (0616)
0602 TOP= 2131.70' INV IN= 2124.00' (0629) INV OUT= 2123.90' (0528)	0616 TOP= 2133.26' INV IN= 2129.50' (0613) INV IN= 2130.09' (0615) INV OUT= 2129.25' (0617)
0603 TOP= 2131.36' INV IN= 2127.90' (0605) INV OUT= 2127.80' (0604)	0617 TOP= 2133.00' INV IN= 2129.00' (0616) INV IN= 2126.90' (0619) INV OUT= 2126.80' (0620)
0604 TOP= 2124.80' INV IN= 2121.40' (0603) INV IN= 2121.40' (0606)	0618 TOP= 2132.58' INV IN= 2121.20' (0604) INV OUT= 2121.20'
0605 TOP= 2131.21' INV OUT= 2128.20' (0603)	0619 TOP= 2139.11' INV IN= 2128.50' (EX-0609) INV OUT= 2128.40' (0617)
0606 TOP= 2124.80' INV OUT= 2121.80' (0604)	0620 TOP= 2133.84' INV IN= 2125.00' (0617) INV OUT= 2124.90' (0601)
0607 TOP= 2132.00' INV IN= 2128.40' (0608) INV IN= 2128.40' (0610) INV OUT= 2128.30' (0629)	0621 TOP= 2138.62' INV OUT= 2123.00' (0622)
0608 TOP= 2132.76' INV IN= 2128.80' (0609) INV IN= 2128.80' (0612) INV OUT= 2128.70' (0607)	0622 TOP= 2138.24' INV IN= 2122.58' (0621) INV OUT= 2122.58' (0601)
0609 TOP= 2134.35' INV IN= 2131.28' (0611) INV OUT= 2131.18' (0608)	0623 TOP= 2137.55' INV OUT= 2132.10' (0610)
0610 TOP= 2134.59' INV IN= 2130.30' (0623) INV OUT= 2130.20' (0607)	0624 TOP= 2136.22' INV IN= 2130.30' (0612) INV OUT= 2130.20' (0612)
0611 TOP= 2136.07' INV OUT= 2133.07' (0609)	0625 TOP= 2134.00' INV IN= 2131.50' (0627) INV OUT= 2131.40' (0629)
0612 TOP= 2133.11' INV IN= 2130.00' (0624) INV OUT= 2129.75' (0608)	0626 TOP= 2132.93' INV IN= 2129.90' (0608)
0613 TOP= 2132.93' INV IN= 2130.10' (0614) INV IN= 2129.85' (0626) INV OUT= 2129.75' (0616)	0627 TOP= 2134.00' INV OUT= 2131.75' (0625)
0614 TOP= 2133.24' INV OUT= 2130.24' (0614)	0628 TOP= 2134.00' INV OUT= 2131.75' (0629)
	0629 TOP= 2134.00' INV IN= 2131.10' (0625) INV IN= 2131.50' (0628) INV IN= 2126.70' (0607) INV OUT= 2126.60' (0602)

V&M
Vaughn & Melton
 Consulting Engineers

Charlotte, North Carolina 704-351-9488
 Tri-Cities, Tennessee 423-467-8400
 Knoxville, Tennessee 865-546-5800
 Asheville, North Carolina 828-293-2196
 New Bern, North Carolina 252-639-9595
 Spartanburg, South Carolina 864-574-4775

Copyright © 2006 Vaughn & Melton, Inc. All Rights Reserved.



PER AT&T MARKUPS: ONCE OVERHEAD UTILITY DESIGN HAS BEEN COMPLETED, AT&T WILL FOLLOW NEW POWER POLES