

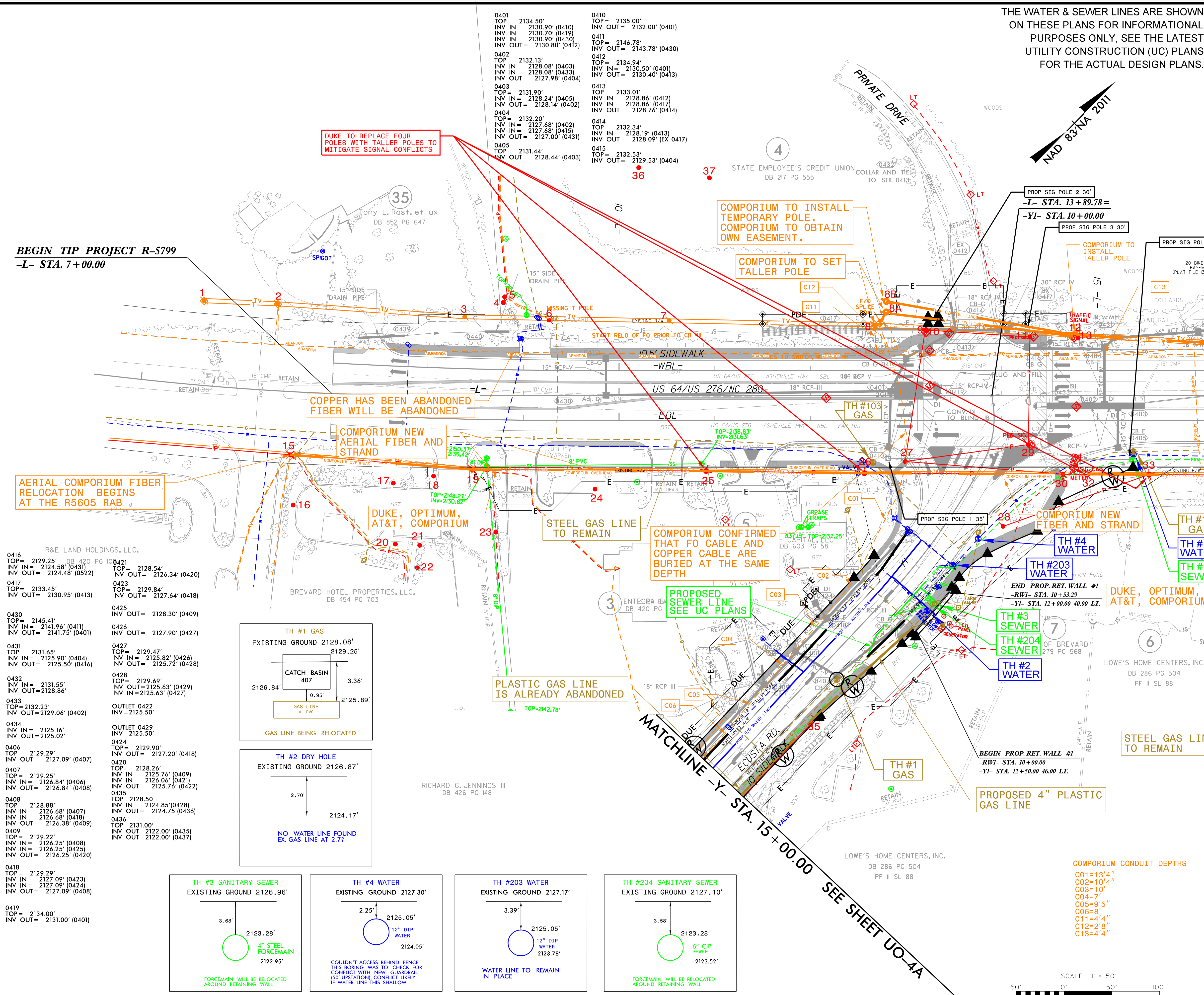
REV. DRAINAGE INVS. & SUE DIAGRAMS, UO-5 & 7 11/11/20
 SUE INFORMATION ADDED 10/29/20
 REV. DRAINAGE REV. ADDED 03/16/20
 MORRIS BROADBAND PLANS ADDED 07/10/20
 DOMINION ENERGY PLANS ADDED 07/28/19
 DUKE REVISED PLAN ADDED 06/05/19
 DUKE REV. DRAINAGE 2/14/18

THE WATER & SEWER LINES ARE SHOWN ON THESE PLANS FOR INFORMATIONAL PURPOSES ONLY, SEE THE LATEST UTILITY CONSTRUCTION (UC) PLANS FOR THE ACTUAL DESIGN PLANS.

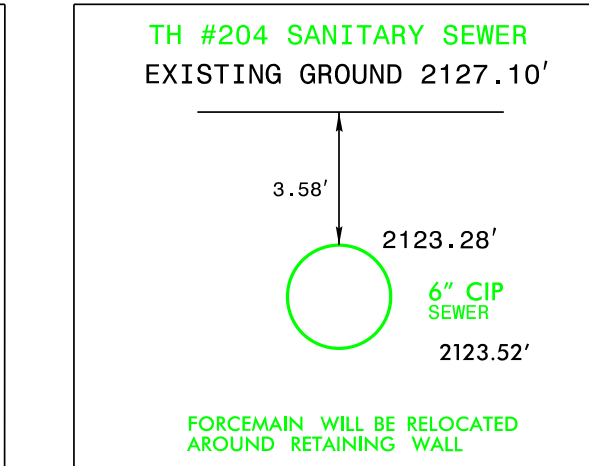
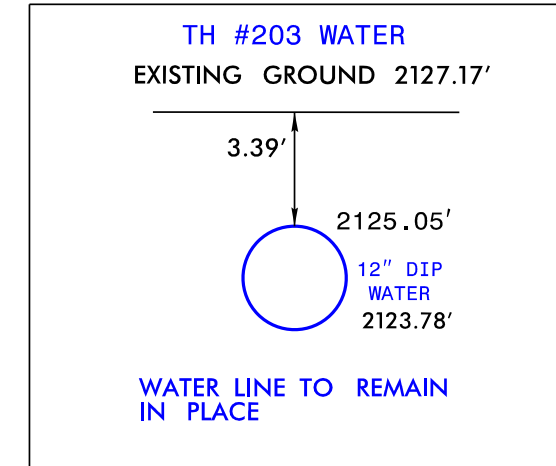
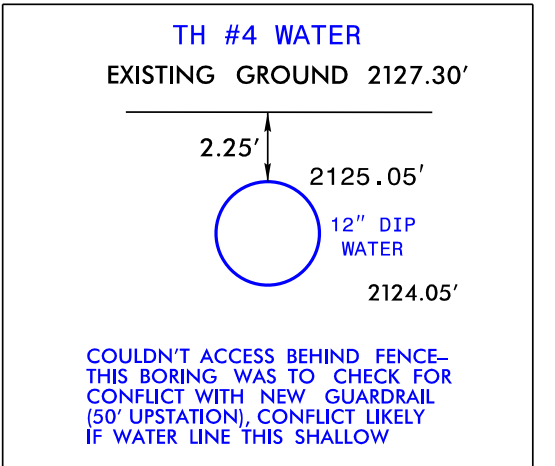
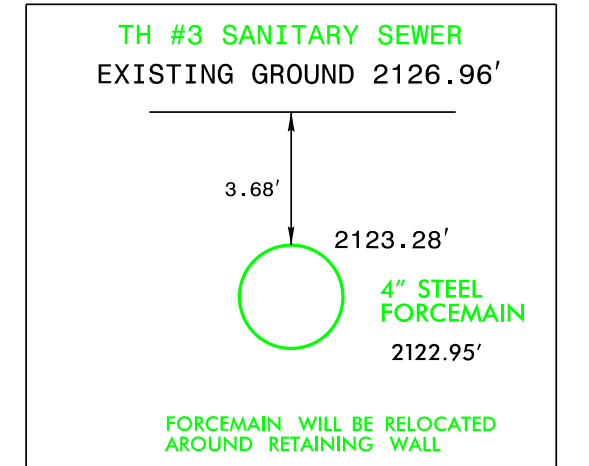
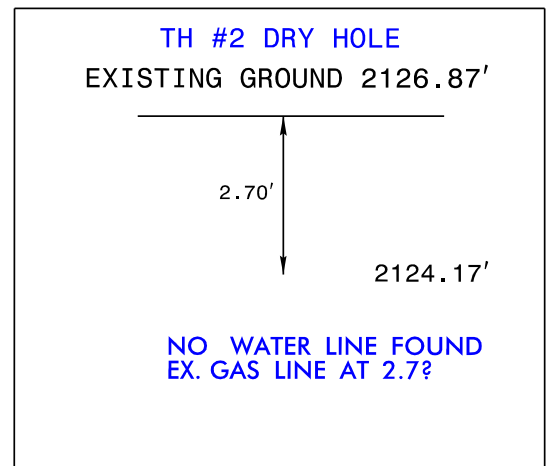
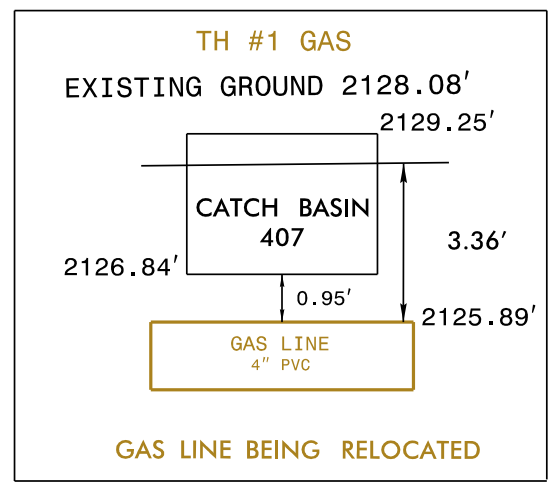
UTILITIES BY OTHERS
 ALL PROPOSED UTILITY WORK SHOWN ON THIS SHEET WILL BE DONE BY OTHERS. NO PAYMENT WILL BE MADE TO THE CONTRACTOR FOR PROPOSED UTILITY WORK SHOWN ON THIS SHEET.

BEGIN TIP PROJECT R-5799
 -L- STA. 7+00.00

MATCHLINE -L- STA. 16+50 SEE SHEET UO-5

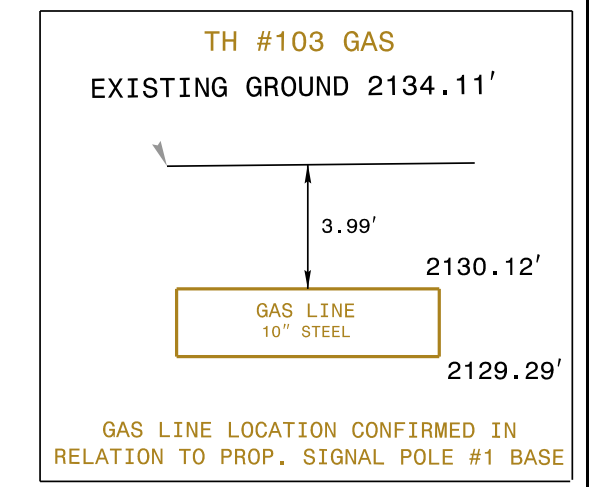
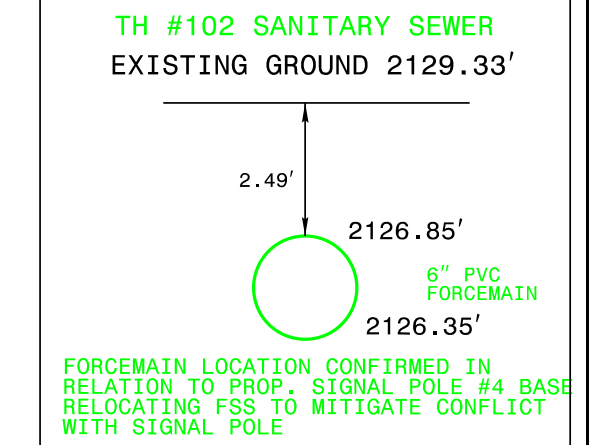
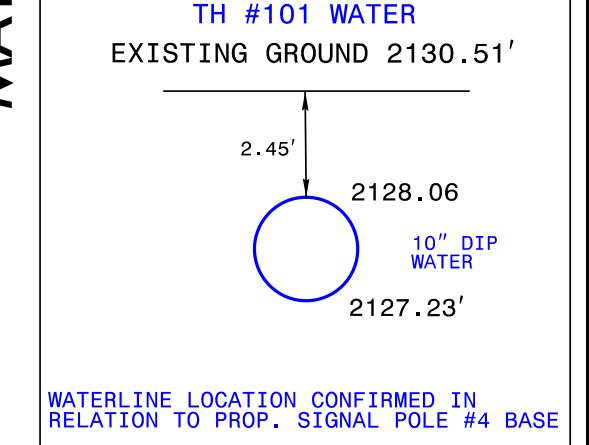
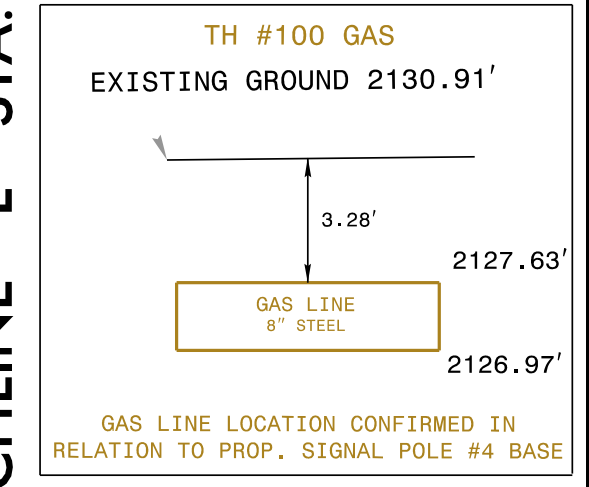
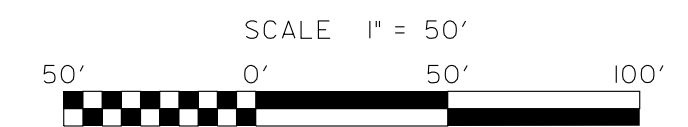


0416 TOP= 2129.25' INV IN= 2124.58' (0431) INV OUT= 2124.48' (0522)	0421 TOP= 2128.54' INV OUT= 2126.34' (0420)
0417 TOP= 2133.45' INV IN= 2130.95' (0413)	0423 TOP= 2129.84' INV OUT= 2127.64' (0418)
0430 TOP= 2145.41' INV IN= 2141.96' (0411) INV OUT= 2141.75' (0401)	0425 INV OUT= 2128.30' (0409)
0431 TOP= 2131.65' INV IN= 2125.90' (0404) INV OUT= 2125.50' (0416)	0426 TOP= 2129.47' INV IN= 2125.82' (0426) INV OUT= 2125.72' (0428)
0432 TOP= 2131.55' INV IN= 2128.86'	0428 TOP= 2129.69' INV IN= 2125.63' (0429) INV IN= 2125.63' (0427)
0433 TOP= 2132.23' INV OUT= 2129.06' (0402)	OUTLET 0422 INV= 2125.50'
0434 TOP= 2129.29' INV IN= 2125.16' INV OUT= 2125.02'	OUTLET 0429 INV= 2125.50'
0406 TOP= 2129.29' INV OUT= 2127.09' (0407)	0424 TOP= 2129.90' INV OUT= 2127.20' (0418)
0407 TOP= 2129.25' INV IN= 2126.84' (0406) INV OUT= 2126.84' (0408)	0420 TOP= 2128.26' INV IN= 2125.76' (0409) INV IN= 2126.06' (0421) INV OUT= 2125.76' (0422)
0408 TOP= 2128.88' INV IN= 2126.68' (0407) INV IN= 2126.68' (0418) INV OUT= 2126.38' (0409)	0435 TOP= 2128.50' INV IN= 2124.85' (0428) INV IN= 2124.75' (0436)
0409 TOP= 2129.22' INV IN= 2126.25' (0408) INV IN= 2126.25' (0423) INV OUT= 2126.25' (0420)	0436 TOP= 2131.00' INV OUT= 2122.00' (0435) INV OUT= 2122.00' (0437)
0418 TOP= 2129.29' INV IN= 2127.09' (0423) INV IN= 2127.09' (0424) INV OUT= 2127.09' (0408)	
0419 TOP= 2134.00' INV OUT= 2131.00' (0401)	



COMPORIUM CONDUIT DEPTHS

C01=13'4"
C02=10'4"
C03=10'
C04=7'
C05=9'5"
C06=8'
C11=4'4"
C12=2'8"
C13=4'4"



V&M
 Vaughn & Melton
 Consulting Engineers

Charlotte, North Carolina 704-357-0484
 Tri-Cities, Tennessee 423-467-8401
 Knoxville, Tennessee 865-546-5800
 Asheville, North Carolina 828-253-2785
 Spartanburg, South Carolina 864-574-4775

ASHEVILLE
 North Carolina 828-253-2796

Copyright © 2006 Vaughn & Melton, Inc. All Rights Reserved