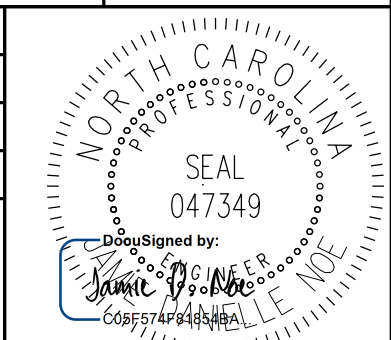
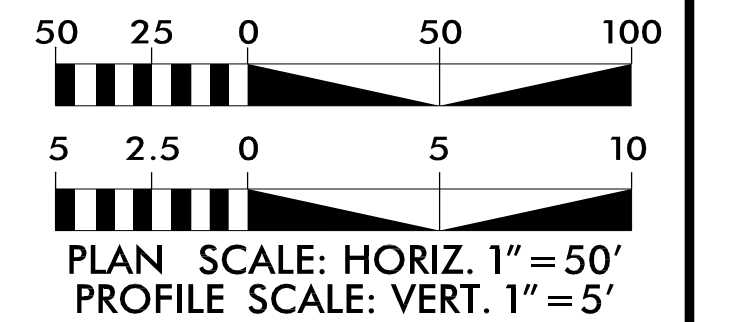
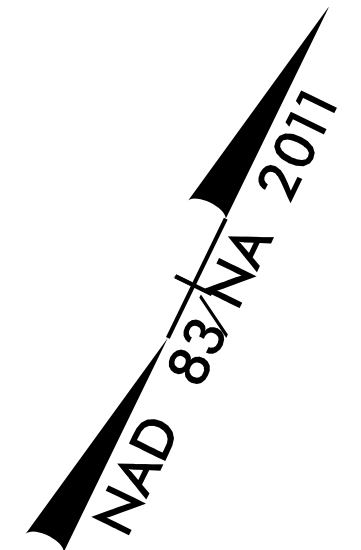


PROJECT REFERENCE NO.	SHEET NO.
R-5799	UC-6
DESIGNED BY: MRD	
DRAWN BY: SRW	
CHECKED BY: JDN	
APPROVED BY: JDN	NORTH CAROLINA DEPARTMENT OF TRANSPORTATION
UTILITIES ENGINEERING SEC. PHONE: (919) 707-6690 FAX: (919) 250-4151	
7/13/2023 11:41:58 PM EDT UTILITY CONSTRUCTION PLANS ONLY	

THE ESTIMATED QUANTITY OF DUCTILE IRON WATER PIPE FITTINGS ON THIS PLAN SHEET IS 1,895 POUNDS. THE ACTUAL QUANTITY AND TYPE OF FITTINGS WILL VARY BASED ON FIELD CONDITIONS.

UTILITY CONSTRUCTION

DOCUMENT NOT CONSIDERED FINAL UNLESS ALL SIGNATURES COMPLETED



PROPOSED TEMPORARY 10" BYPASS  
CONTRACTOR SHALL PROVIDE SHOP DRAWINGS FOR THE PROPOSED TEMPORARY 10" WATERLINE  
547 LF 10" WATER LINE (1,156 LF TOTAL) DIP, PC 350

10" GATE VALVE -WL-2- STA. 20+15.77  
88 LF OPEN CUT 24" STEEL ENCASEMENT PIPE 0.25" MIN. WALL THICKNESS INCLUDES SS SPACERS  
10" 90° BEND (HORZ.) -WL-2- STA. 21+12.93  
10" 22½° BEND (HORZ.) -WL-2- STA. 21+20.02  
10" 22½° BEND (HORZ.) -WL-2- STA. 21+62.23  
24 LF WATER SERVICE  
RELOCATE 3 WATER METERS  
10"x6"x10" TEE  
6" GATE VALVE  
RELOCATE FIRE HYDRANT  
10 LF FIRE HYDRANT LEG  
-WL-2- STA. 21+85.29  
10" 45° BEND (HORZ.) -WL-2- STA. 21+96.73  
10" GATE VALVE -WL-2- STA. 22+02.85

10" 90° BEND (HORZ.) -WL-2- STA. 20+05.77

10" GATE VALVE -WL-2- STA. 21+25.56

ABANDON 375 LF 10" UTILITY PIPE

AIR RELEASE VALVE -WL-2- STA. 21+42.73  
SEE SHEET 3C FOR DETAIL

ABANDON 280 LF 6" UTILITY PIPE

10" LINE STOP

RELOCATE WATER METER

26 LF WATER SERVICE  
END 10" WL CONSTRUCTION -WL-2- STA. 25+14.46  
CONNECT TO EXISTING W/ 10" TAPPING SLEEVE & VALVE

73 LF OPEN CUT 24" STEEL ENCASEMENT PIPE 0.25" MIN. WALL THICKNESS INCLUDES SS SPACERS  
10" 45° BEND (HORZ.) -WL-2- STA. 24+30.20

10" GATE VALVE -WL-2- STA. 24+21.91

10" 45° BEND (HORZ.) -WL-2- STA. 24+13.36

END TIP PROJECT R-5799 -L- STA. 32+66.00

RELOCATE 3 WATER METERS

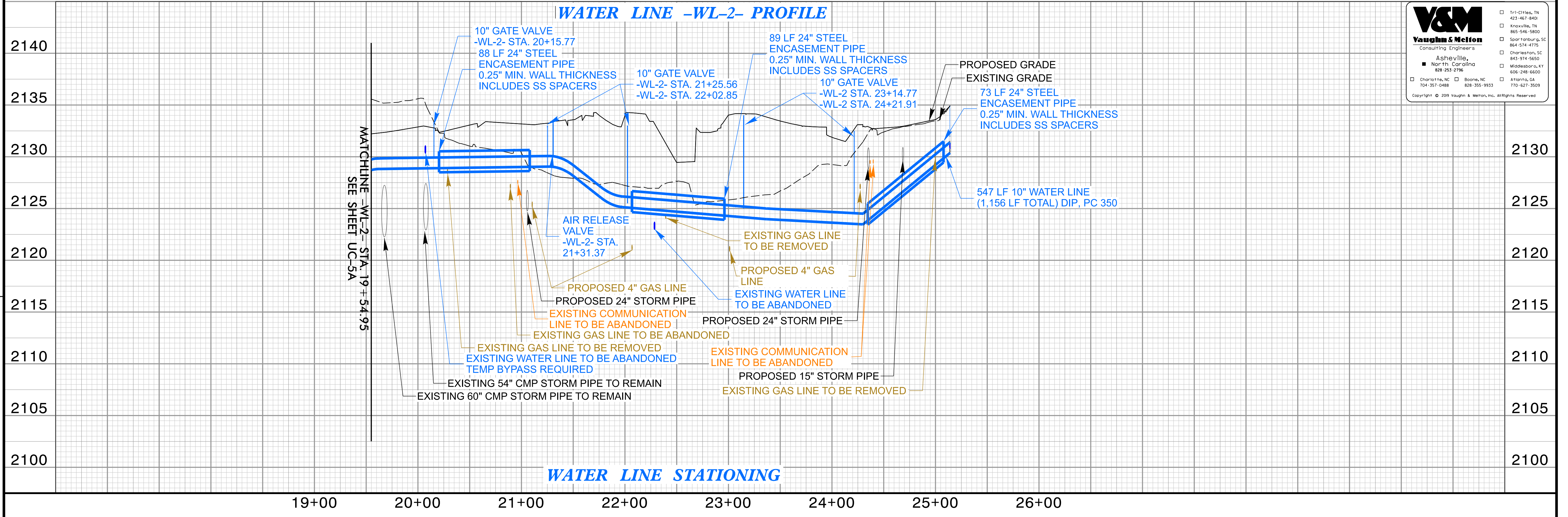
10" 22½° BEND (HORZ.) -WL-2- STA. 23+71.97  
10" 11¼° BEND (HORZ.) -WL-2- STA. 23+42.40  
10" GATE VALVE -WL-2- STA. 23+14.77  
10" 22½° BEND (HORZ.) -WL-2- STA. 23+06.47

89 LF OPEN CUT 24" STEEL ENCASEMENT PIPE 0.25" MIN. WALL THICKNESS INCLUDES SS SPACERS  
REMOVE WATER METER

152 LF WATER SERVICE  
CONNECT TO EXISTING SERVICE LINE

RETAINING WALL 3

WATER LINE -WL-2- PROFILE



WATER LINE STATIONING

V&M  
Vaughn & Melton  
Consulting Engineers  
Asheville, NC  
704-357-0488

REVISIONS

4/24/20