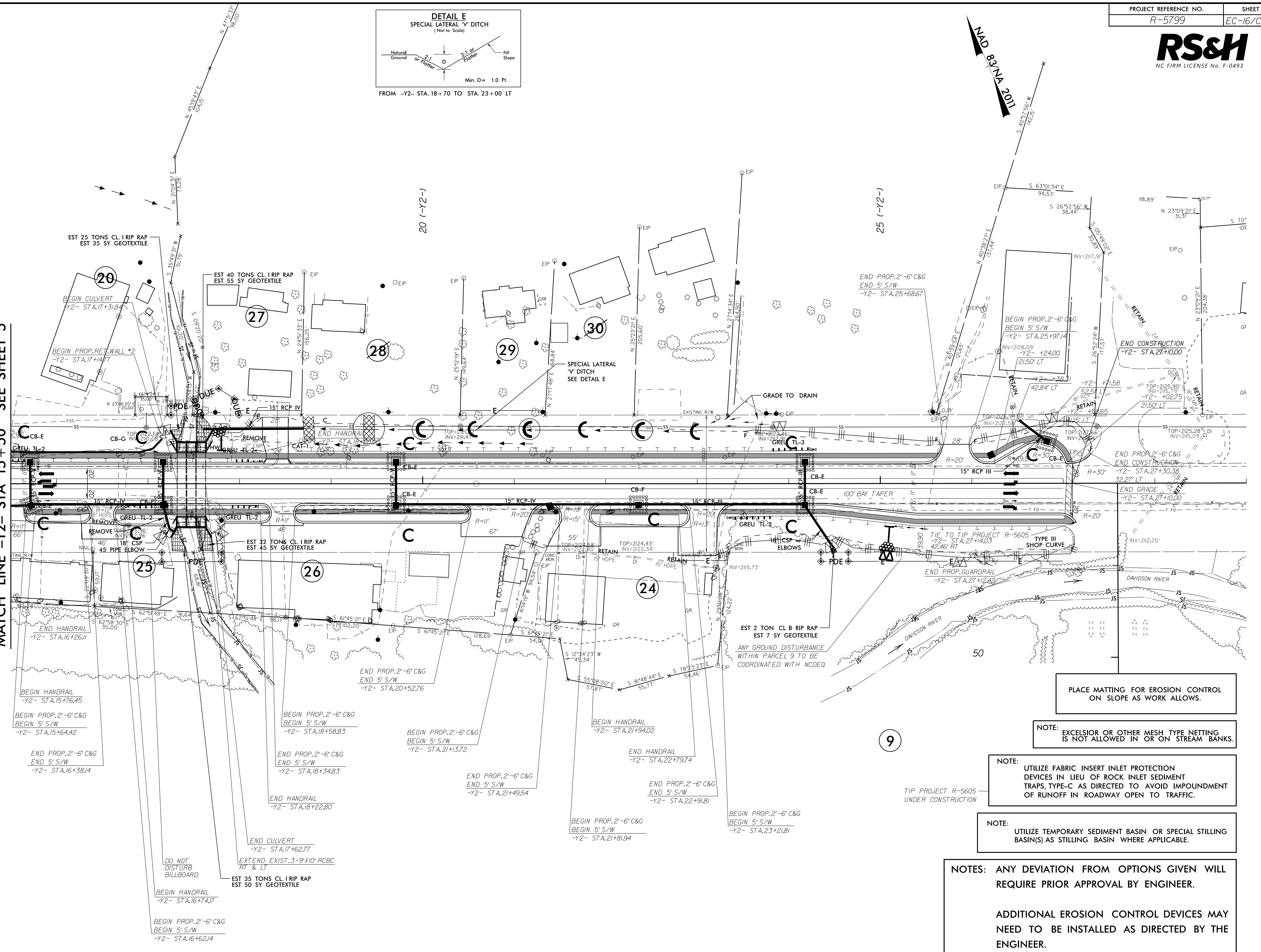


MATCH LINE -Y2- STA 15+50 SEE SHEET 5



PLACE MATTING FOR EROSION CONTROL ON SLOPE AS WORK ALLOWS.

NOTE: EXCELSIOR OR OTHER MESH TYPE NETTING IS NOT ALLOWED IN OR ON STREAM BANKS.

NOTE: UTILIZE FABRIC INSERT INLET PROTECTION DEVICES IN LIEU OF ROCK INLET SEDIMENT TRAPS, TYPE-C AS DIRECTED TO AVOID IMPOUNDMENT OF RUNOFF IN ROADWAY OPEN TO TRAFFIC.

NOTE: UTILIZE TEMPORARY SEDIMENT BASIN OR SPECIAL STILLING BASIN(S) AS STILLING BASIN WHERE APPLICABLE.

NOTES: ANY DEVIATION FROM OPTIONS GIVEN WILL REQUIRE PRIOR APPROVAL BY ENGINEER.

ADDITIONAL EROSION CONTROL DEVICES MAY NEED TO BE INSTALLED AS DIRECTED BY THE ENGINEER.

8/17/99
26-APR-2003 10:06
R:\PROJECTS\2003\10\06\DESIGN\PLAN_SHEETS\R-5799_EC_FINAL_EC-16.dgn
\$\$\$\$ UNPLANNED \$\$\$