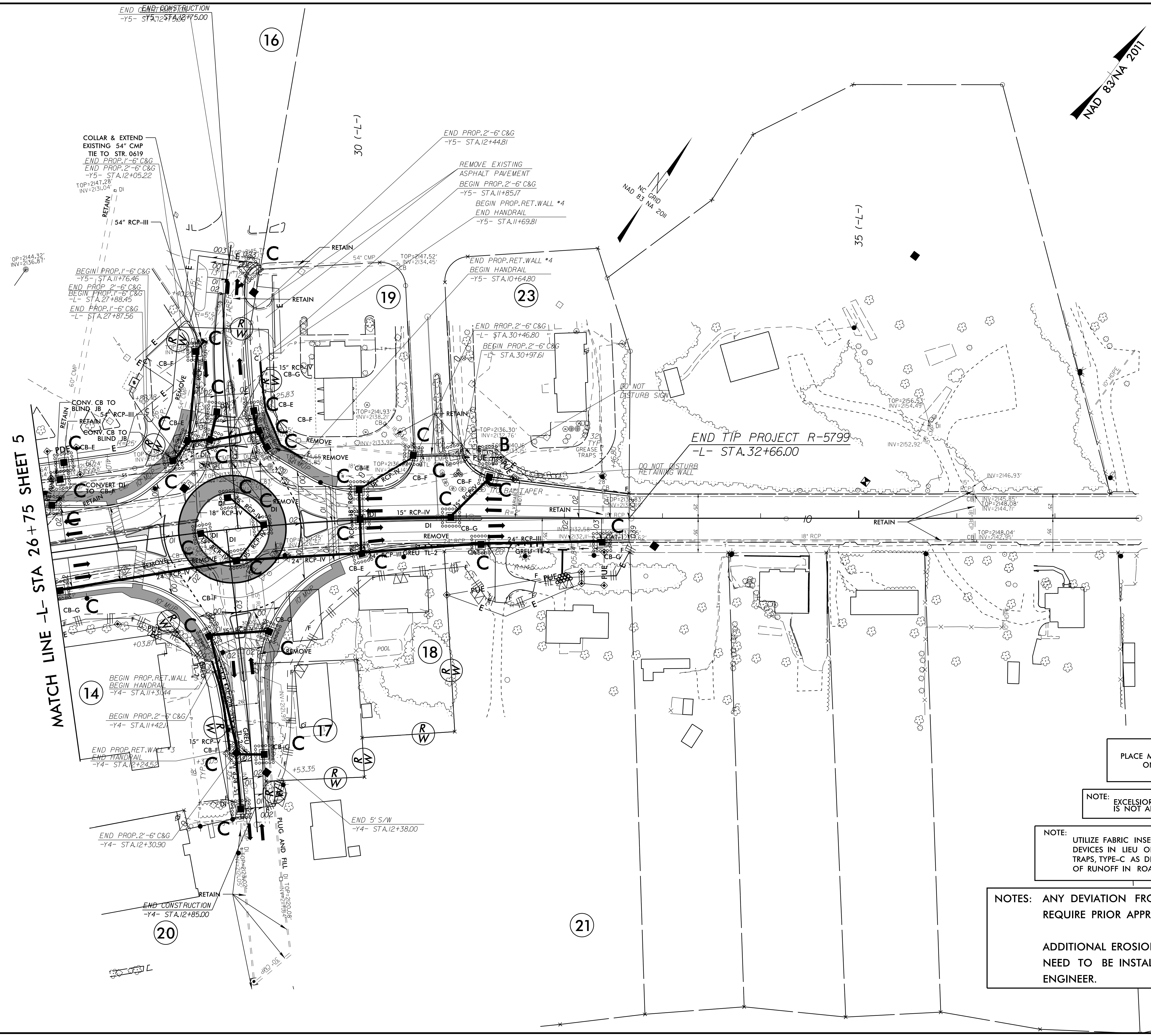


8/17/99
R-5799-2003 10:06
R:\E:\Work\Projects\R-5799\EC_FINAL_EC-15.dgn
\$\$\$\$\$
\$\$\$\$\$
\$\$\$\$\$



PLACE MATTING FOR EROSION CONTROL ON SLOPE AS WORK ALLOWS.

NOTE: EXCELSIOR OR OTHER MESH TYPE NETTING IS NOT ALLOWED IN OR ON STREAM BANKS.

NOTE: UTILIZE FABRIC INSERT INLET PROTECTION DEVICES IN LIEU OF ROCK INLET SEDIMENT TRAPS, TYPE-C AS DIRECTED TO AVOID IMPOUNDMENT OF RUNOFF IN ROADWAY OPEN TO TRAFFIC.

NOTES: ANY DEVIATION FROM OPTIONS GIVEN WILL REQUIRE PRIOR APPROVAL BY ENGINEER.

ADDITIONAL EROSION CONTROL DEVICES MAY NEED TO BE INSTALLED AS DIRECTED BY THE ENGINEER.