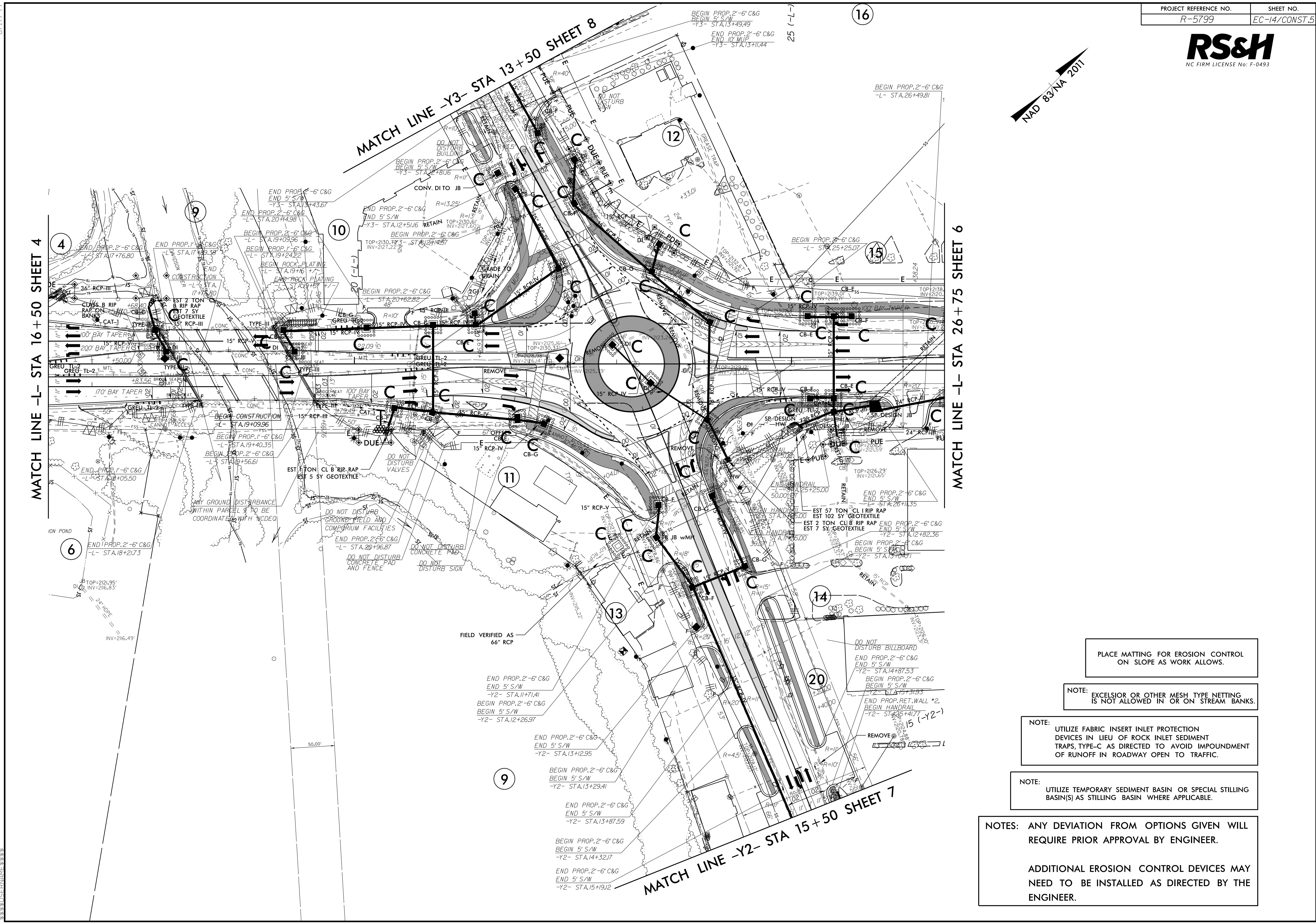


MATCH LINE -L- STA 16+50 SHEET 4

MATCH LINE -L- STA 26+75 SHEET 6

MATCH LINE -Y3- STA 13+50 SHEET 8

MATCH LINE -Y2- STA 15+50 SHEET 7



PLACE MATTING FOR EROSION CONTROL ON SLOPE AS WORK ALLOWS.

NOTE: EXCESIOR OR OTHER MESH TYPE NETTING IS NOT ALLOWED IN OR ON STREAM BANKS.

NOTE: UTILIZE FABRIC INSERT INLET PROTECTION DEVICES IN LIEU OF ROCK INLET SEDIMENT TRAPS, TYPE-C AS DIRECTED TO AVOID IMPOUNDMENT OF RUNOFF IN ROADWAY OPEN TO TRAFFIC.

NOTE: UTILIZE TEMPORARY SEDIMENT BASIN OR SPECIAL STILLING BASIN(S) AS STILLING BASIN WHERE APPLICABLE.

NOTES: ANY DEVIATION FROM OPTIONS GIVEN WILL REQUIRE PRIOR APPROVAL BY ENGINEER.

ADDITIONAL EROSION CONTROL DEVICES MAY NEED TO BE INSTALLED AS DIRECTED BY THE ENGINEER.

26-APR-2023 10:06 R:\E:\M\TRN\Plan\_Sheets\R-5799\_EC\_FINAL\_EC-14.dgn